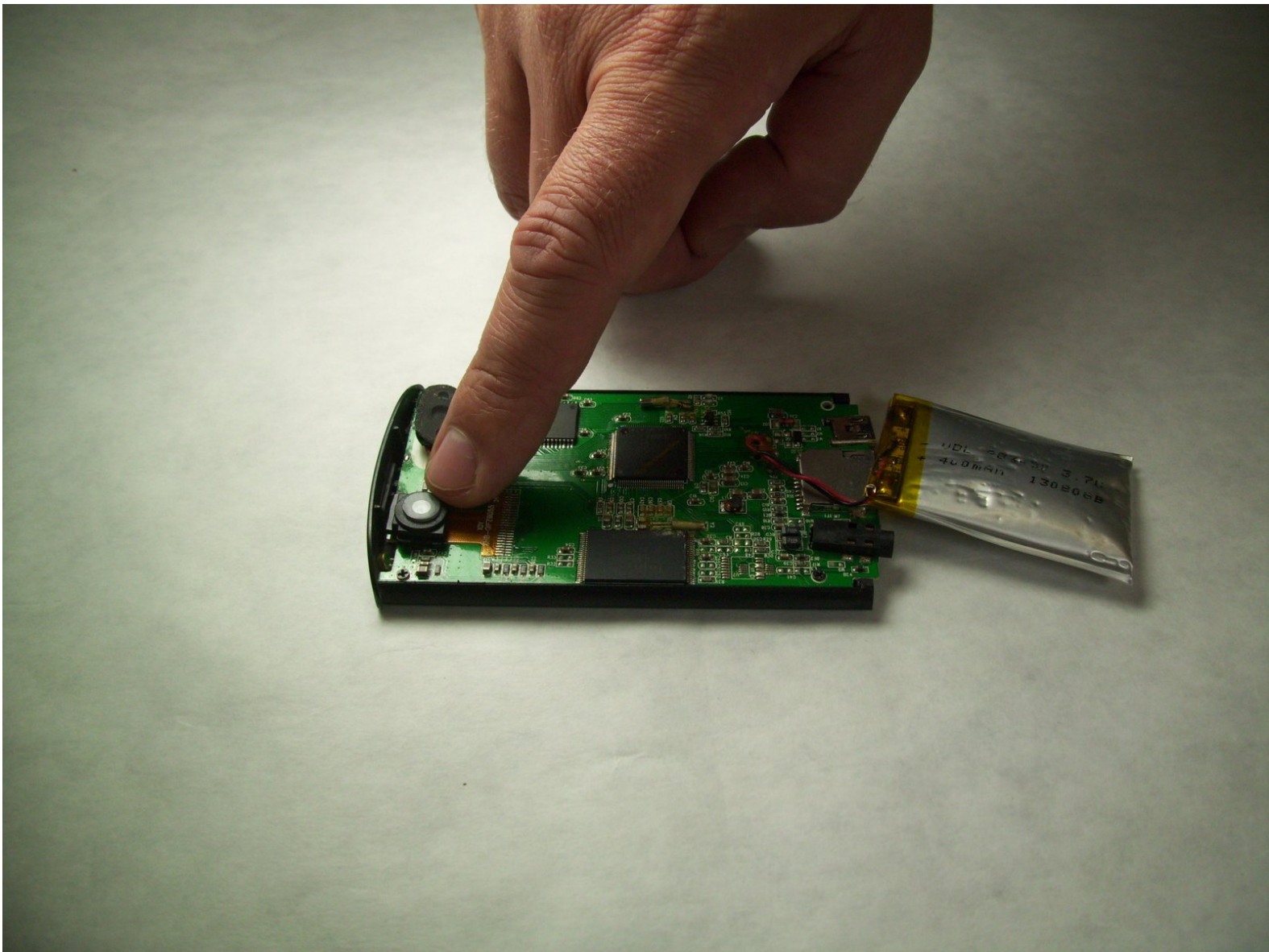




# Eclipse MTE28VGM Lens Cover Replacement

This guide will demonstrate how to replace a scratched or damaged camera lens cover of the Eclipse MTE28VGM digital media player.

Written By: Tyler Hudgens



---

## INTRODUCTION

This guide is required when the camera is taking distorted photos and it has been determined that it is because of the plastic lens cover being scratched.

---



### TOOLS:

- [Metal Spudger](#) (1)
  - [JIS Driver Set](#) (1)
-

## Step 1 — Lens Cover



- Using the screwdriver with the J00 bit, remove the two 4.8 mm Phillips screws.

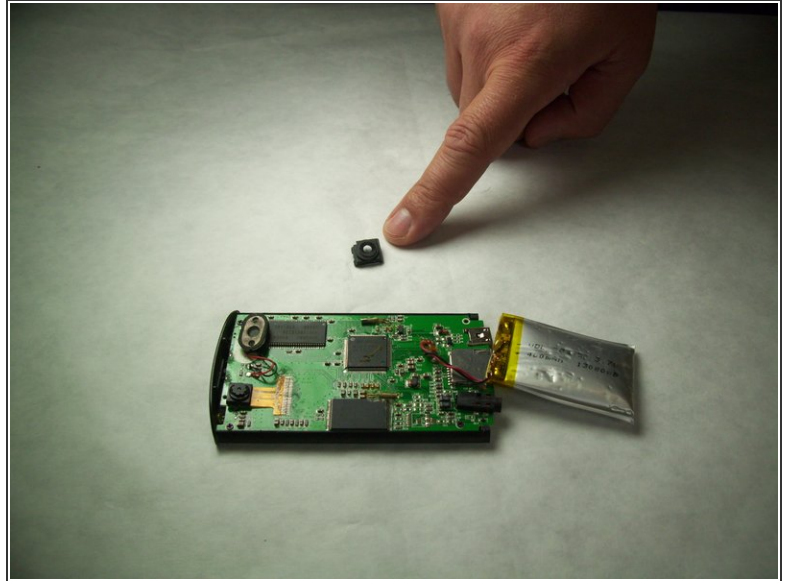
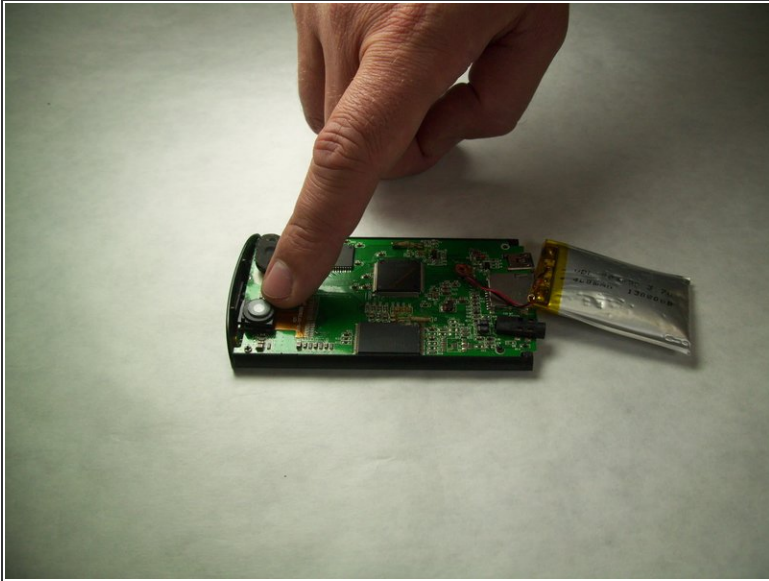
⚠ Use caution when removing the screws as they can strip easily.

## Step 2



- Using the small metal pry bar, remove the bottom plastic cover.
- Using your thumb, press down on the home button and hold the metal casing. With your other hand hold the top plastic part of the device. At the same time slide the metal casing and the plastic casing apart.
- ⓘ On occasion the battery can become swollen and make this process difficult. You might need to use the spudger to push on the bottom components to assist in the separation.

## Step 3



- Using the plastic spudger, pry the plastic lens cover off of the camera.
- Attach the replacement plastic lens cover to the camera.

To reassemble your device, follow these instructions in reverse order.