



Eclipse MTE28VGM Battery Replacement

This guide will show you how to replace the battery for the Eclipse MTE28VGM.

Written By: Brendon Yates



INTRODUCTION

This guide is required when the device fails to power on and it has been determined that it is due to an issue with the battery. In order to replace the battery, soldering is required which is a safety hazard and requires specific equipment. When soldering, protective equipment should be worn and extreme caution should be taken.



TOOLS:

- [Soldering Iron](#) (1)
 - [Tweezers](#) (1)
 - [JIS Driver Set](#) (1)
-

Step 1 — Battery Replacement



- Using the screwdriver with the J00 bit, remove the two 4.8 mm Phillips screws.

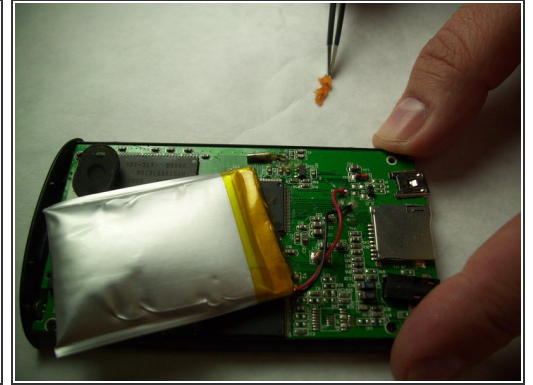
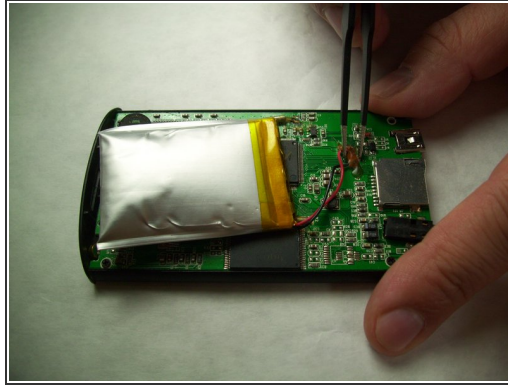
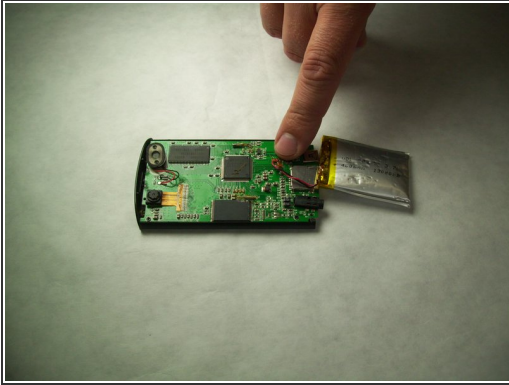
⚠ Use caution when removing the screws as they can strip easily.

Step 2



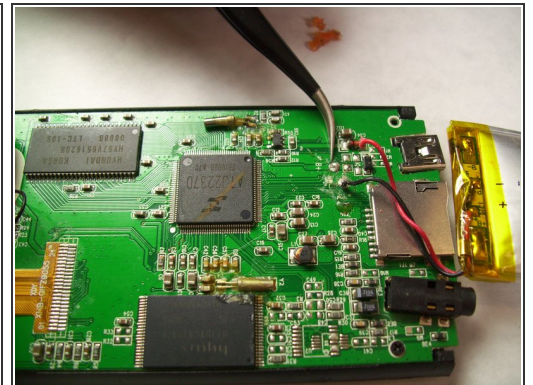
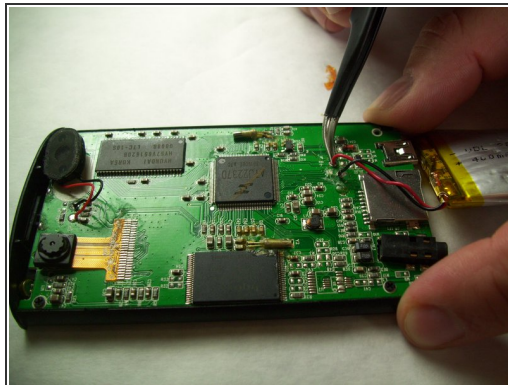
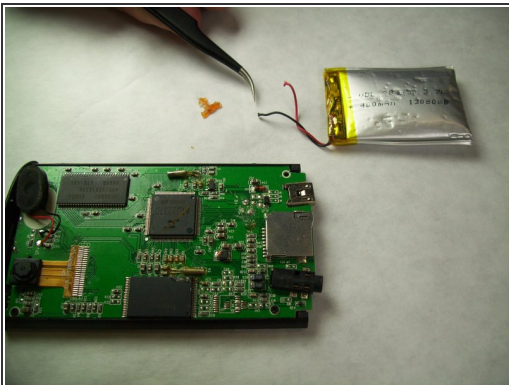
- Using the small metal pry bar, remove the bottom plastic cover.
- Using your thumb, press down on the home button and hold the metal casing. With your other hand hold the top plastic part of the device. At the same time slide the metal casing and the plastic casing apart.
- ⓘ On occasion the battery can become swollen and make this process difficult. You might need to use the spudger to push on the bottom components to assist in the separation.

Step 3




- Using the straight tweezers, remove the plastic coating on the wires.

Step 4



- Using the [soldering guide](#), desolder the battery connections.

 Soldering is a dangerous process, and caution needs to be taken to avoid injury.

To reassemble your device, follow these instructions in reverse order.