



Neo3Do Back Panel Replacement

Use this guide to remove the back panel for access to the internals of the devices, as well as replace the back panel when you're done.

Written By: Michael Whitehead



INTRODUCTION

The guide is the beginning of every other guide for the Neo3DO device. In order to access any of the other parts for repair or replacement, you need to remove the back panel. DO NOT attempt to remove the front screen, as it is part of the device case and removing it will damage the tablet.

Check all other guides you plan to follow and have all tools laid out in advance. Make sure your workspace is clean and clear of anything not needed for the replacement.



TOOLS:

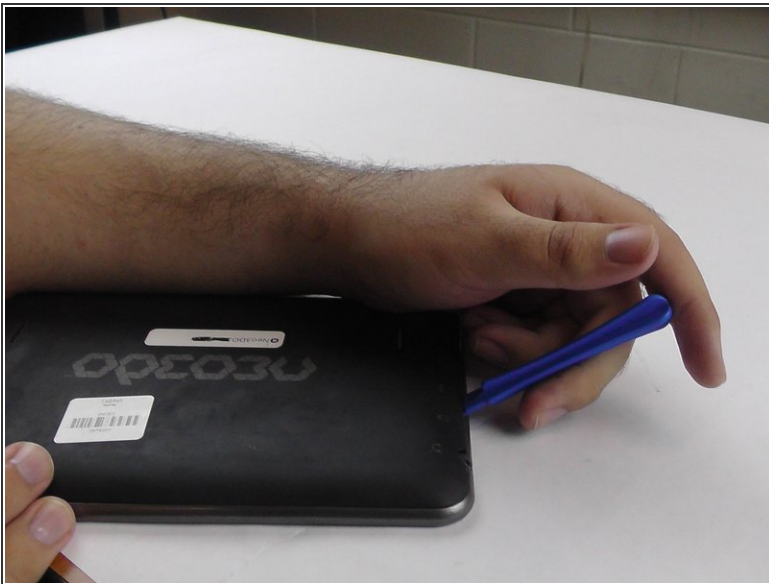
- [iFixit Opening Tools](#) (1)
-

Step 1 — Back Panel



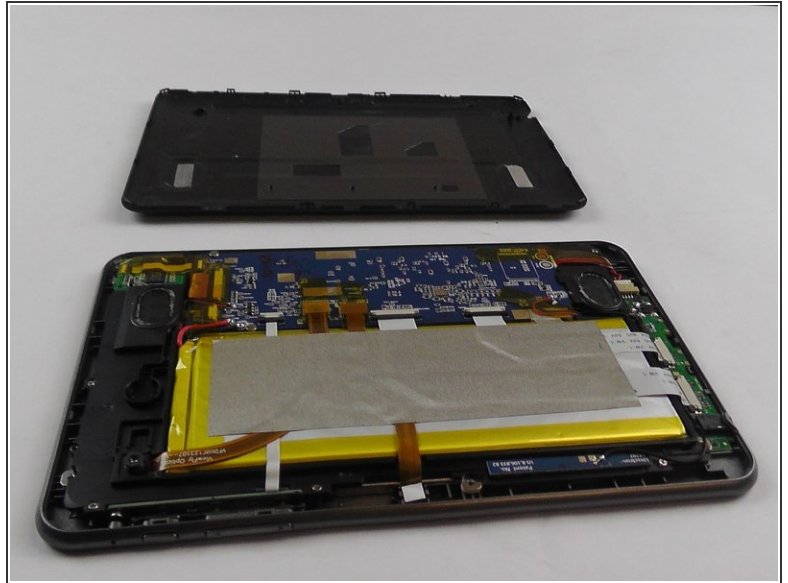
- Turn the Neo3DO face down so that the logo is facing toward you.
- Insert the plastic opening tool between the metal frame and the plastic back panel, as shown.

Step 2



- Gently pry the back panel upwards.
- ⚠ Ensure the tool does not slip into the device and damage the internals.

Step 3



- Once the back panel has been pried away from the bottom and sides of the Neo3DO, lift the back panel up and away from the tablet.

Step 4



- When replacing the back panel, place the top edge of the back panel against the top edge of the Neo3DO, as shown.
- ⓘ The top edge of the device is the edge closest to the camera. The top of the back panel is the side with the hole for the camera.

