



Garmin Dezl 760LMT Battery Replacement

Replace your Garmin's dying or dead battery to return power to your GPS.

Written By: Ryan Williams



INTRODUCTION

This guide will explain how to open your Garmin, detach the battery from the motherboard, and remove the battery from the device safely and quickly.



TOOLS:

- [T6 Torx Screwdriver](#) (1)
- [Heavy-Duty Spudger](#) (1)



PARTS:

- [Garmin Nuvi 2757/2797 and Dezl 760 Replacement Battery](#) (1)

Step 1 — Back Panel



- Using a Torx T6 Screwdriver, remove the ten 7mm screws from the back panel.

Step 2



- Using a metal spudger, pry the device apart.

☑ To recombine them, line up the two halves of the device and press them together.


Step 3




- Turn the device over, laying it on its back with the screen facing upwards.
 - Lift the front panel away from the silver part of the back panel.
- ⚠ Make sure not to rip the ribbon cable that is connected to the screen and the motherboard.

Step 4 — Battery

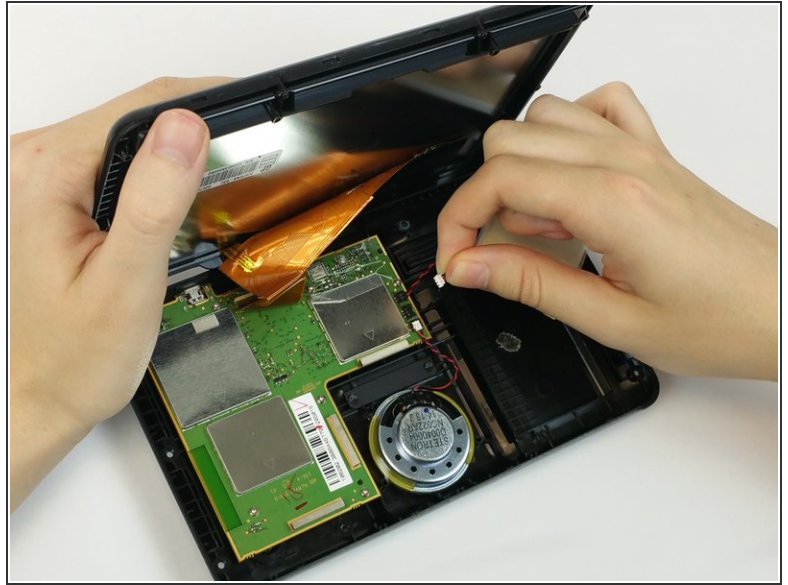


 This photo shows the use of a tool that is not ESD safe. Use a nylon spudger to complete this step.

- Use a nylon spudger to pry the battery from the device.

 During reassembly, place double-sided electrical tape under the battery before pressing it into its slot.

Step 5



- Grasp the battery wire near the motherboard and lift upward to detach the connector.

To reassemble your device, follow these instructions in reverse order.