



Toshiba Satellite A215-S4757 RAM Replacement

Sometimes the amount of RAM your computer has is just not enough, and you need to replace the hardware to give your Satellite more. Here we will show you how to replace your device's RAM.

Written By: Jacob Brown





TOOLS:

- [Mako Driver Kit - 64 Precision Bits](#) (1)
-

Step 1 — RAM



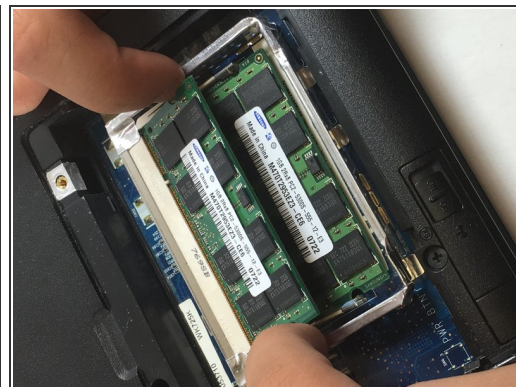
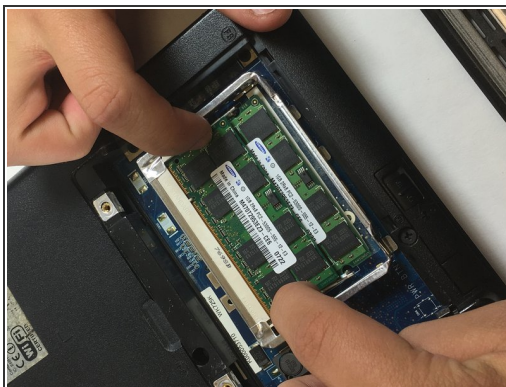
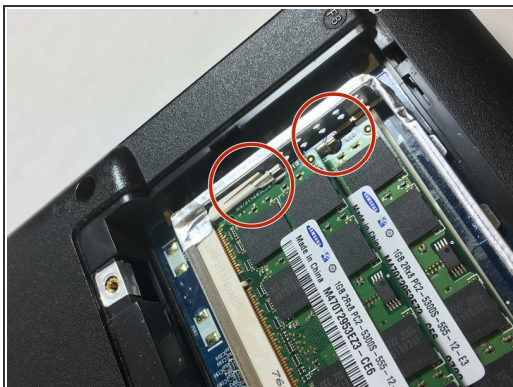
- Locate the RAM storage space on the back of your Toshiba Satellite.

Step 2



- Unscrew the two screws holding the plate to the laptop.
- Gently lift the lid, and remove it from the Satellite.

Step 3



- Identify the clips on each side of both RAM components that are holding them in place.
- To remove each component, simply push each clip gently outward until the component pops upward.


Step 4



- Gently pull and remove the RAM component, and repeat for the second component laying underneath the first.

Step 5



 Be sure to match each RAM components female insert, with the laptops male insert during reassembly. If you do not reinstall the components correctly your motherboard may fry.

To reassemble your device, follow these instructions in reverse order.