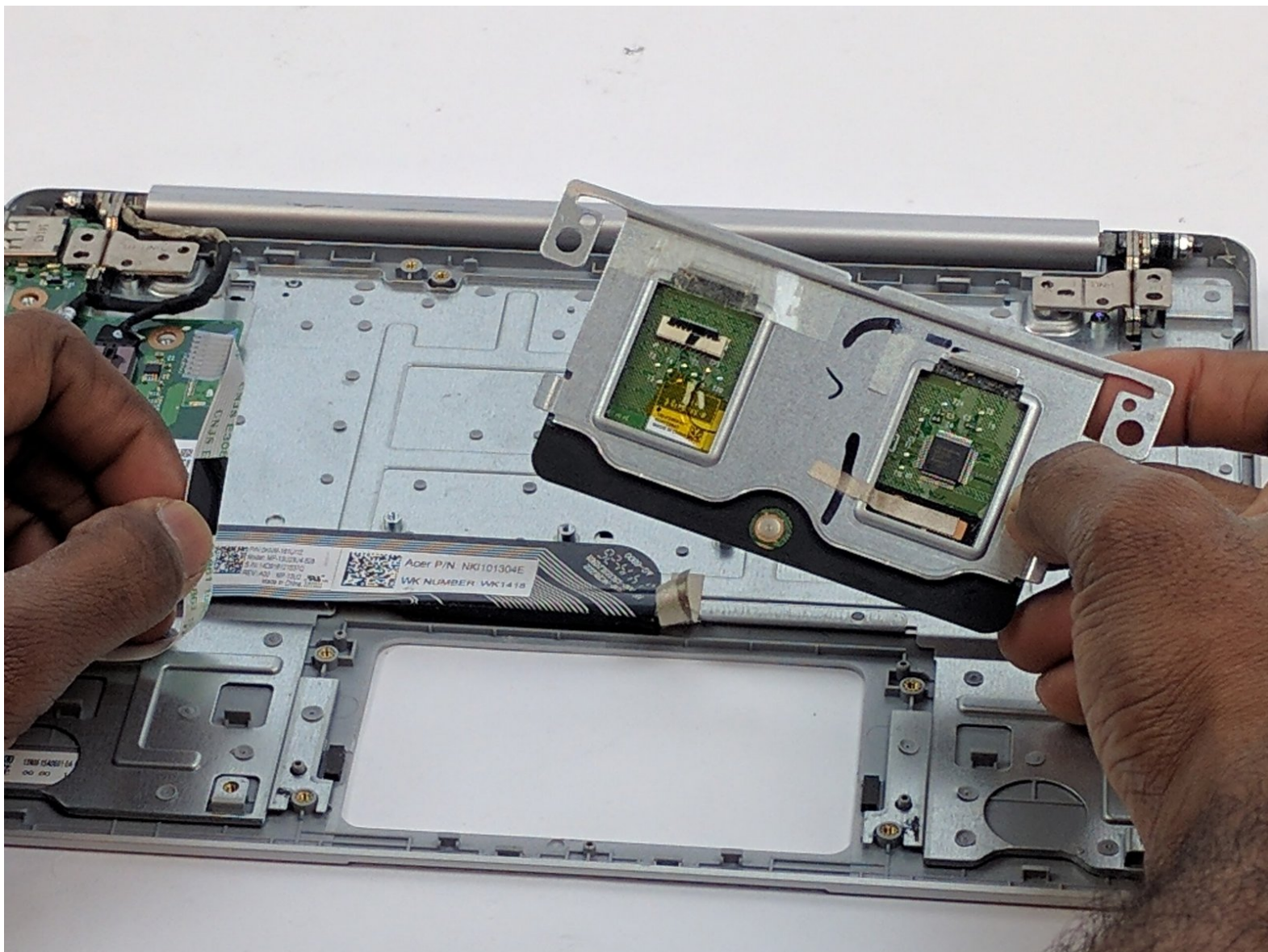




Acer Aspire Switch 10 SW5-011-18R3 Track pad Replacement

Use this guide to replace your track pad.

Written By: Max Francois



INTRODUCTION

The track pad on this device has a habit of breaking. It can sometimes sink into the keyboard or stop responding altogether. This guide will help you replace a faulty track pad.

TOOLS:

- [iFixit Opening Tools](#) (1)
 - [Phillips #0 Screwdriver](#) (1)
-

Step 1 — Touchpad



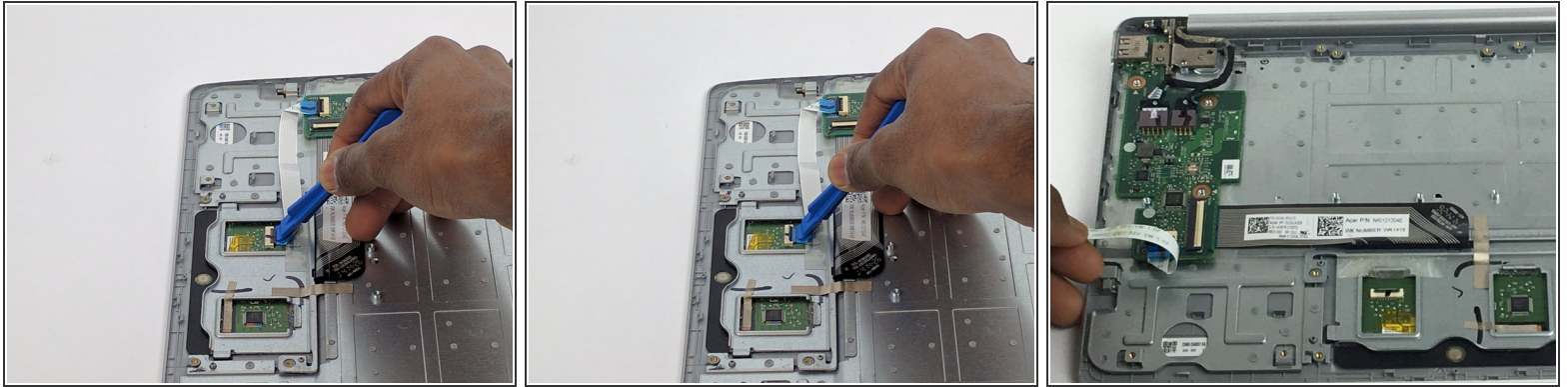
- Use the Driver with the Phillips PH0 attachment to unscrew the 7 5mm screws from the back panel.
- This screw does not need to be removed because it doesn't hold the backplate in.

Step 2



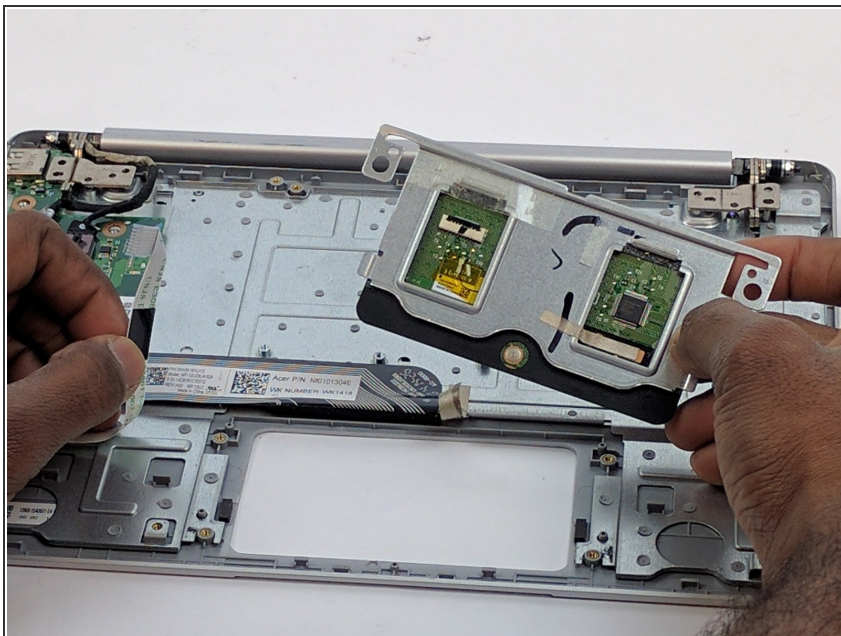
- Push the plastic opening tool into the crevice between the front and back panel.
- Pull down on the plastic opening tool like a lever to create space and slide along the crevice to remove the back panel.

Step 3



- Gently slide the plastic opening tool under the black clip that is attached to the ribbon cable.
- Pull down on the plastic opening tool like a lever to flip the black clip and remove the ribbon cable.
- ⓘ The black clip doesn't take much force to lift, so be gentle to avoid breaking it.

Step 4



- Remove the touchpad.

To reassemble your device, follow these instructions in reverse order.