



# Samsung HMX-W200 Outer Case Replacement

This guide will show users how to remove the casings surrounding the Samsung HMX-W200 camcorder.

Written By: Antonio Abades Lescano



---

## INTRODUCTION

This guide will show you step by step how to disassemble and separate the front and back casing of a Samsung HMX-W200 camcorder.

---

### TOOLS:

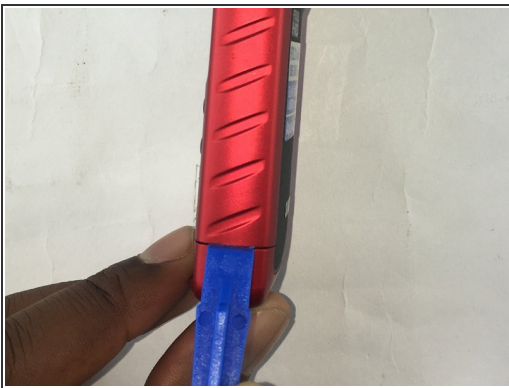
- [Phillips #00 Screwdriver](#) (1)
  - [iFixit Opening Tools](#) (1)
-

## Step 1 — Outer Case



- Remove the 5.00mm screw on the right of the LCD display towards the bottom of the device by using a Phillips #00 screwdriver.

## Step 2



- Use the plastic opening tool to separate and remove the bottom red casing. Do this by, pushing the tool into the seam and prying up the red casing as you move along the edges.
- ⓘ Make sure to separate all the corners before removing the red casing.

## Step 3



- Using the plastic opening tool, separate and pull away the red casing on the right of the LCD screen.
- ⓘ Make sure to separate all the corners before removing the red casing.



## Step 4



- To access the HDMI slot, move slider towards the bottom of the casing on the other side of the camcorder. The lid casing will lift up upon doing so.
- After accessing the HDMI slot you will find a 5.00mm screw. Using a Phillips #00 screwdriver, remove the screw.

## Step 5



- Using the plastic opening tool, separate and pull away the red casing to the left of the LCD screen.
- ⓘ Make sure to separate all the corners before removing the red casing.

## Step 6



- Remove the six 5.00mm screws by using a Phillips #00 screwdriver.

## Step 7



- Lift the two plastic tabs on the left side of the LCD screen and the single one on the right side on the black casing to open the device.

## Step 8



- Separate the front and back casing.

To reassemble your device, follow these instructions in reverse order.