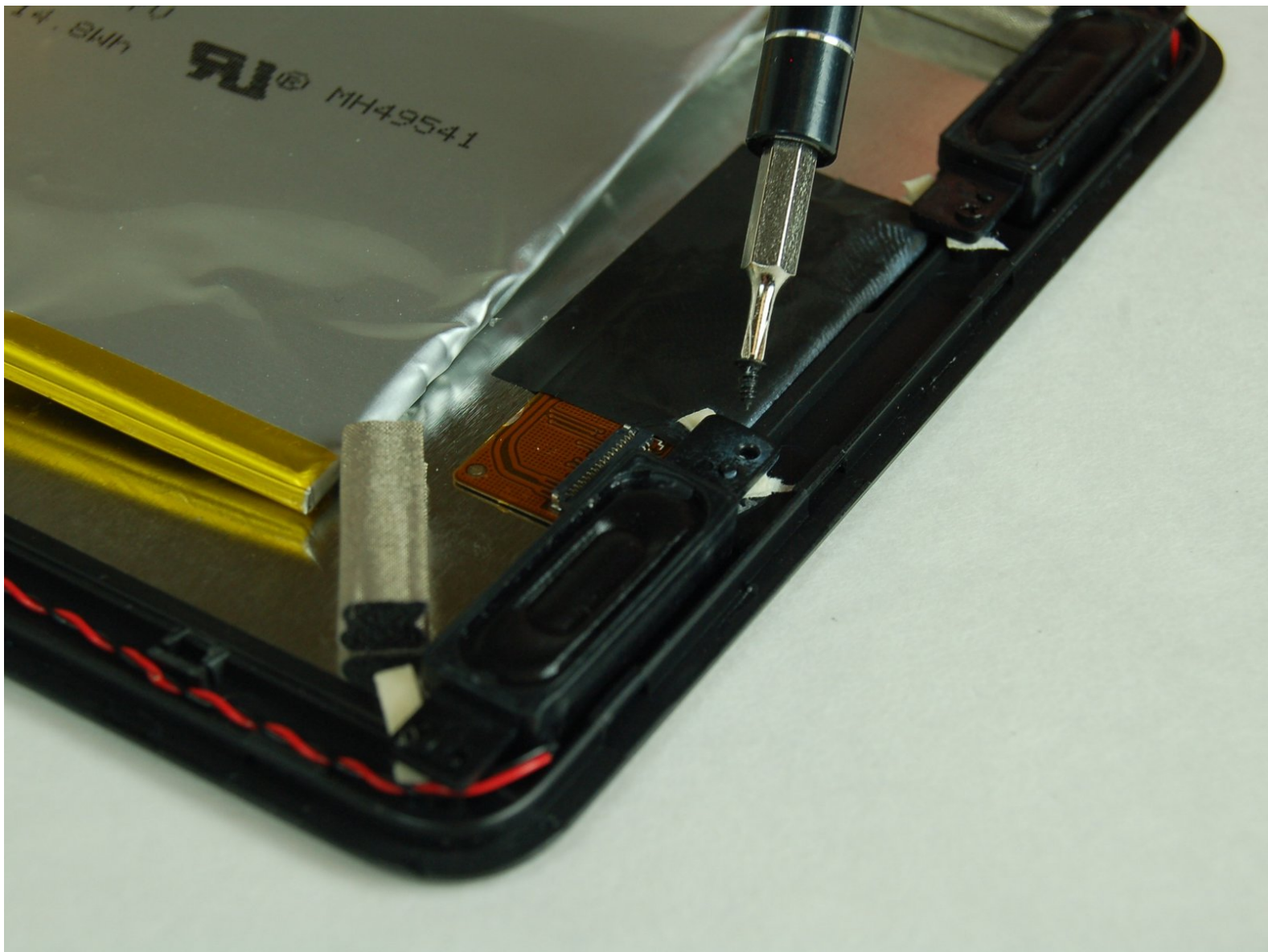




# Insignia NS-15MS0832B Speaker Replacement

This guide will show you how to replace the internal speakers on an Insignia Wi-Fi Windows 8 tablet.

Written By: Harrison Smith



## INTRODUCTION

This guide demonstrates how to replace the internal speakers on an Insignia Wi-Fi Windows 8 Tablet. In case of audio malfunctions, follow this guide to replace the internal speakers on your tablet.

---

### TOOLS:

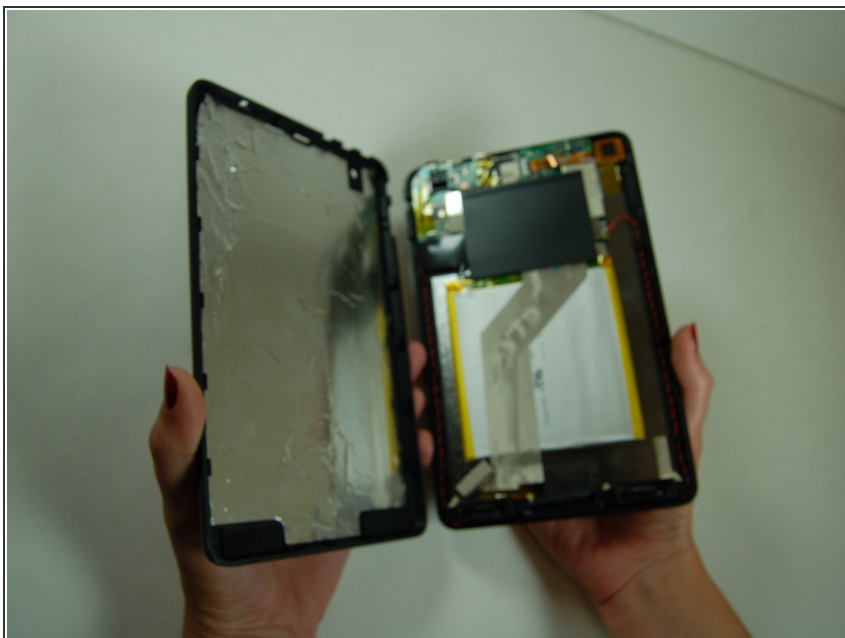
- [Phillips #0 Screwdriver](#) (1)
  - [iFixit Opening Tools](#) (1)
-

## Step 1 — Speakers



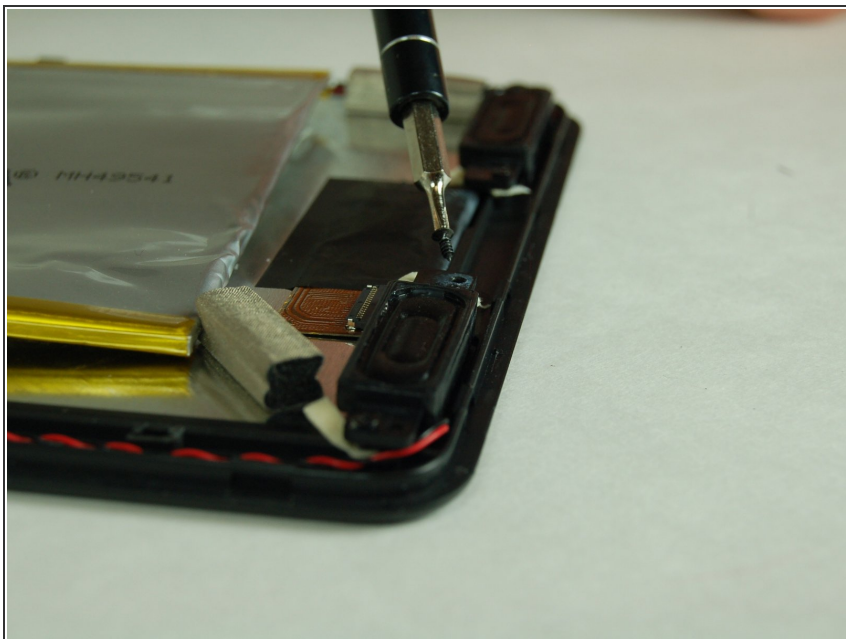
- Begin the speaker replacement by inserting the plastic opening tool into the corner of the device.
- Work the plastic opening tool along the edge until you have separated the screen from the back plate.

## Step 2



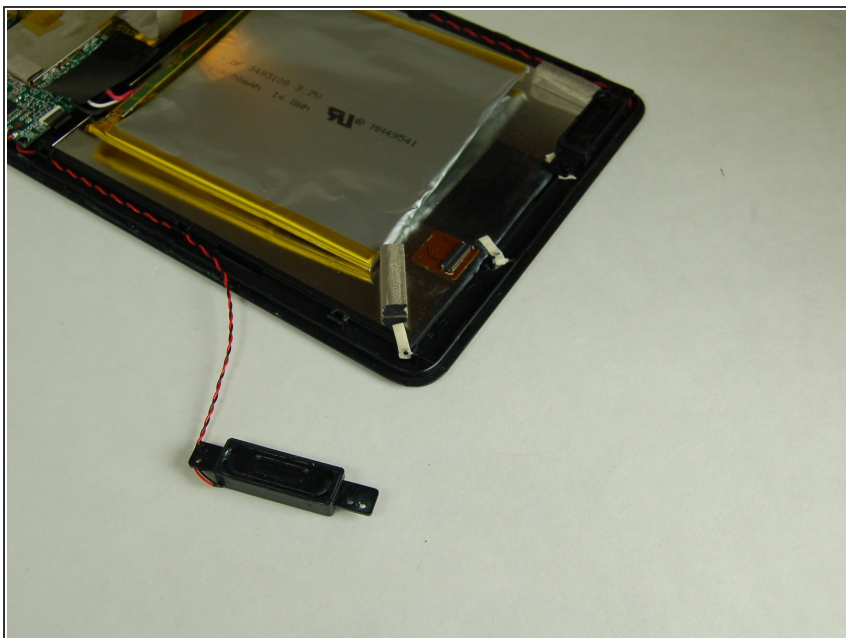
- Once the backplate is separated from the screen it should look like this.

## Step 3



- Gently set the tablet screen-side down.
- The speakers can be located at the bottom of the tablet, below the battery.
- Using a screwdriver, remove the five 1.2 mm Phillips #1 screws that hold the speakers to the tablet.

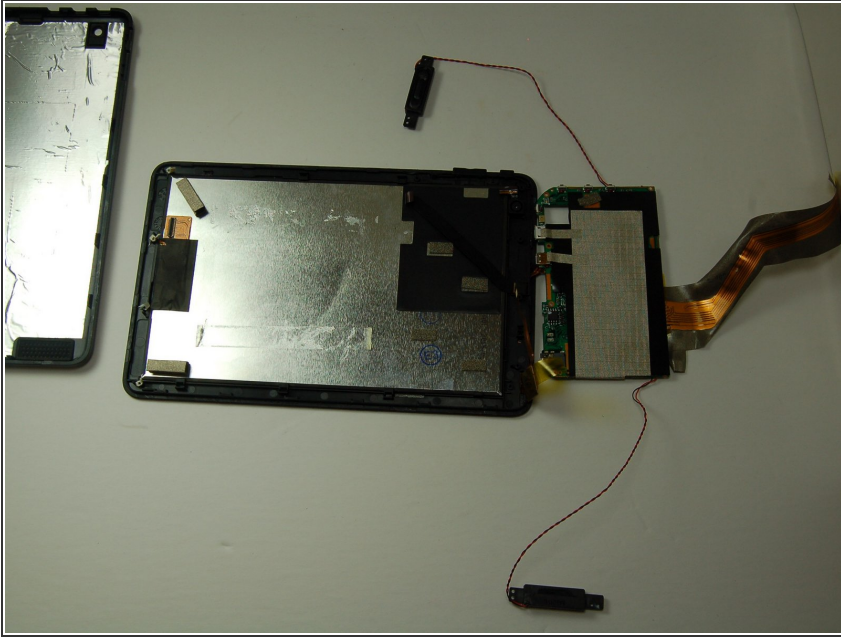
## Step 4



- Once first speaker has been removed, remove the other speaker opposite from it.



## Step 5



- Once faulty speakers have been unscrewed, disconnect the speaker and attach the new speaker to the mother board.

To reassemble your device, follow these instructions in reverse order.