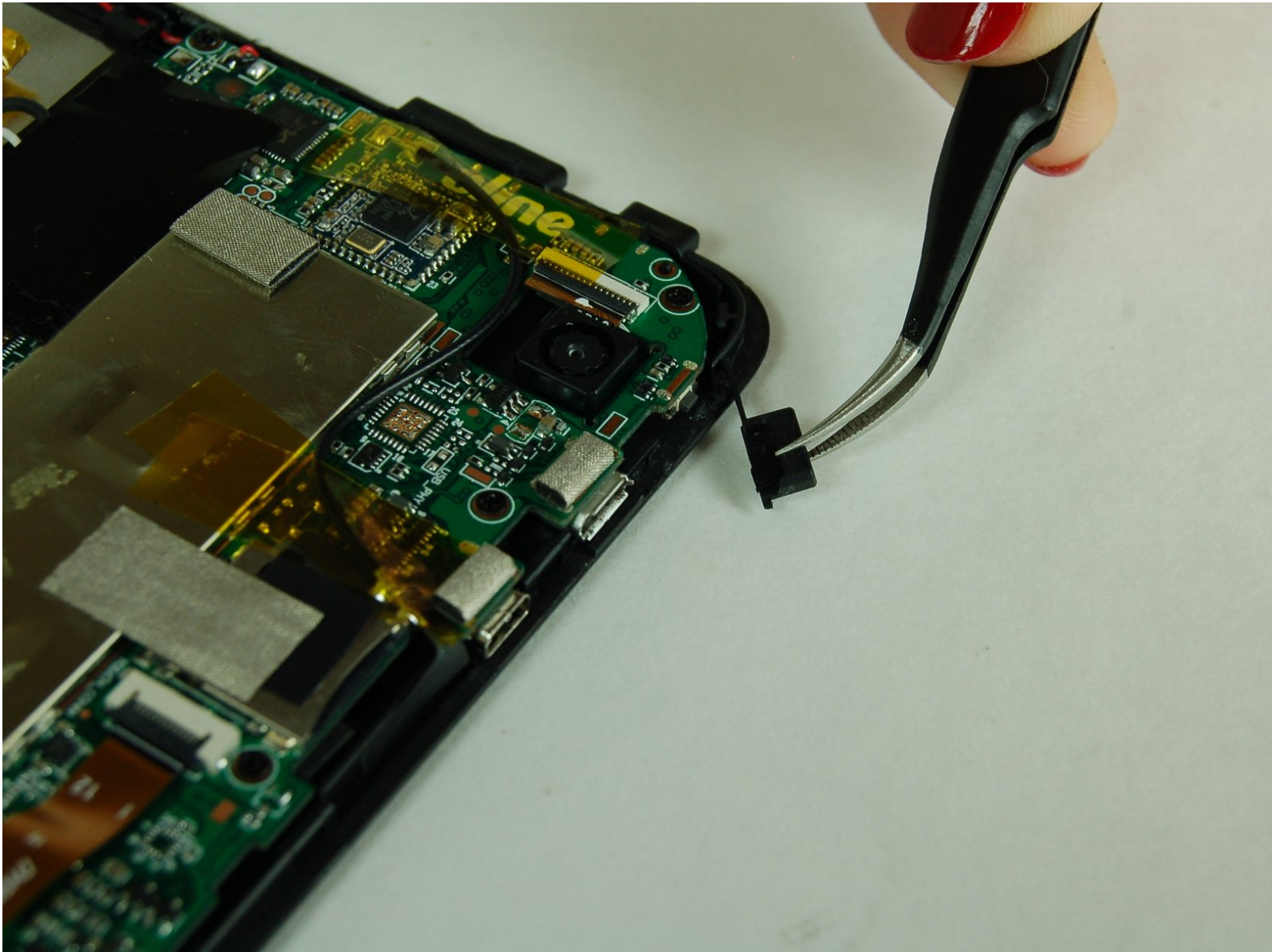




Insignia NS-15MS0832B Power Button Replacement

Use this guide to help replace the power button in the Insignia Wi-Fi Tablet.

Written By: Harrison Smith



INTRODUCTION

The power button is used to turn on and off the device. If the device will not turn on or off, the power button may be faulty. In order to resolve these issues, you will have to replace the power button. This guide will show you the steps to take to replacing the power button.



TOOLS:

- [Spudger](#) (1)
 - [Tweezers](#) (1)
 - [iFixit Opening Tools](#) (1)
-

Step 1 — Power Button



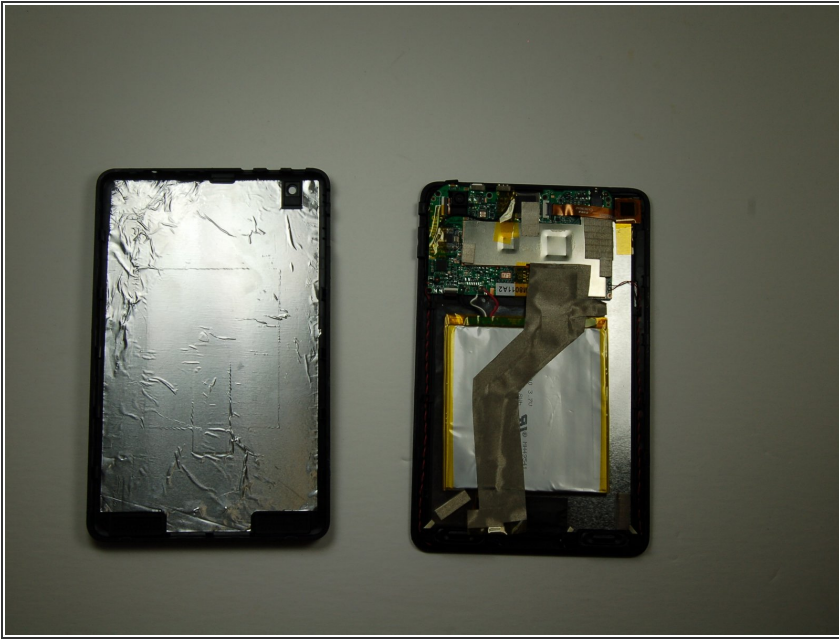
- The power button is located on the top side on the tablet, along side the charging port and MicroUSB port

Step 2



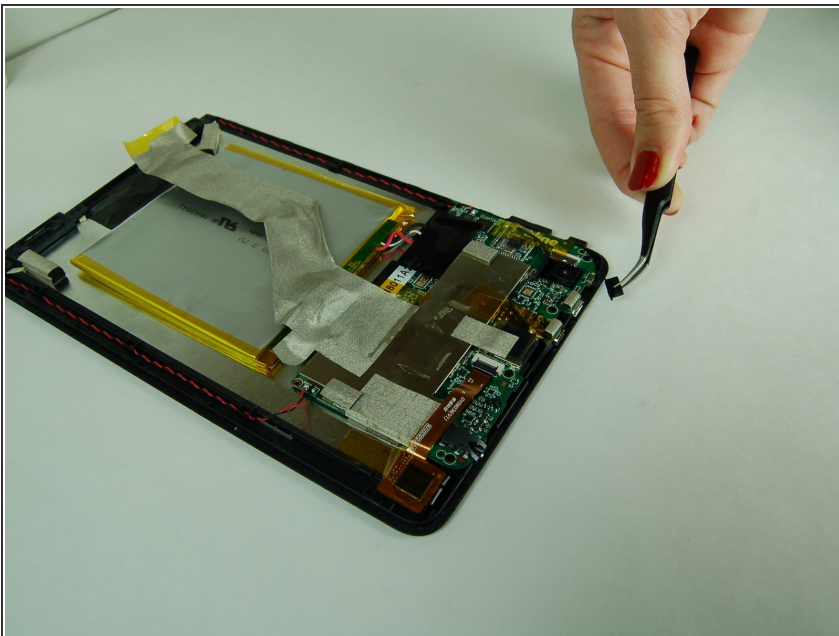
- Starting in the corner, carefully insert the plastic opening tool.
- Work the plastic opening tool carefully around the entire device to pry it open.

Step 3



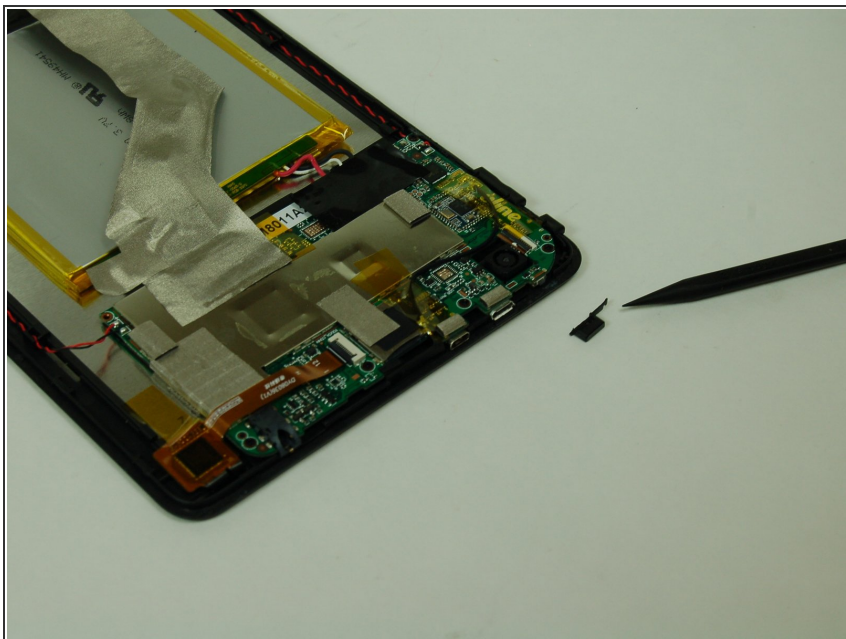
- Once the tablet is completely open, set aside the back half.
- Carefully place the other half of the tablet screen-side down.

Step 4



- Using tweezers, gently grab the power button and pull it out from the tablet.

Step 5



- Once the faulty power button is removed, follow the directions in reverse order to reassemble the device.

To reassemble your device, follow these instructions in reverse order.