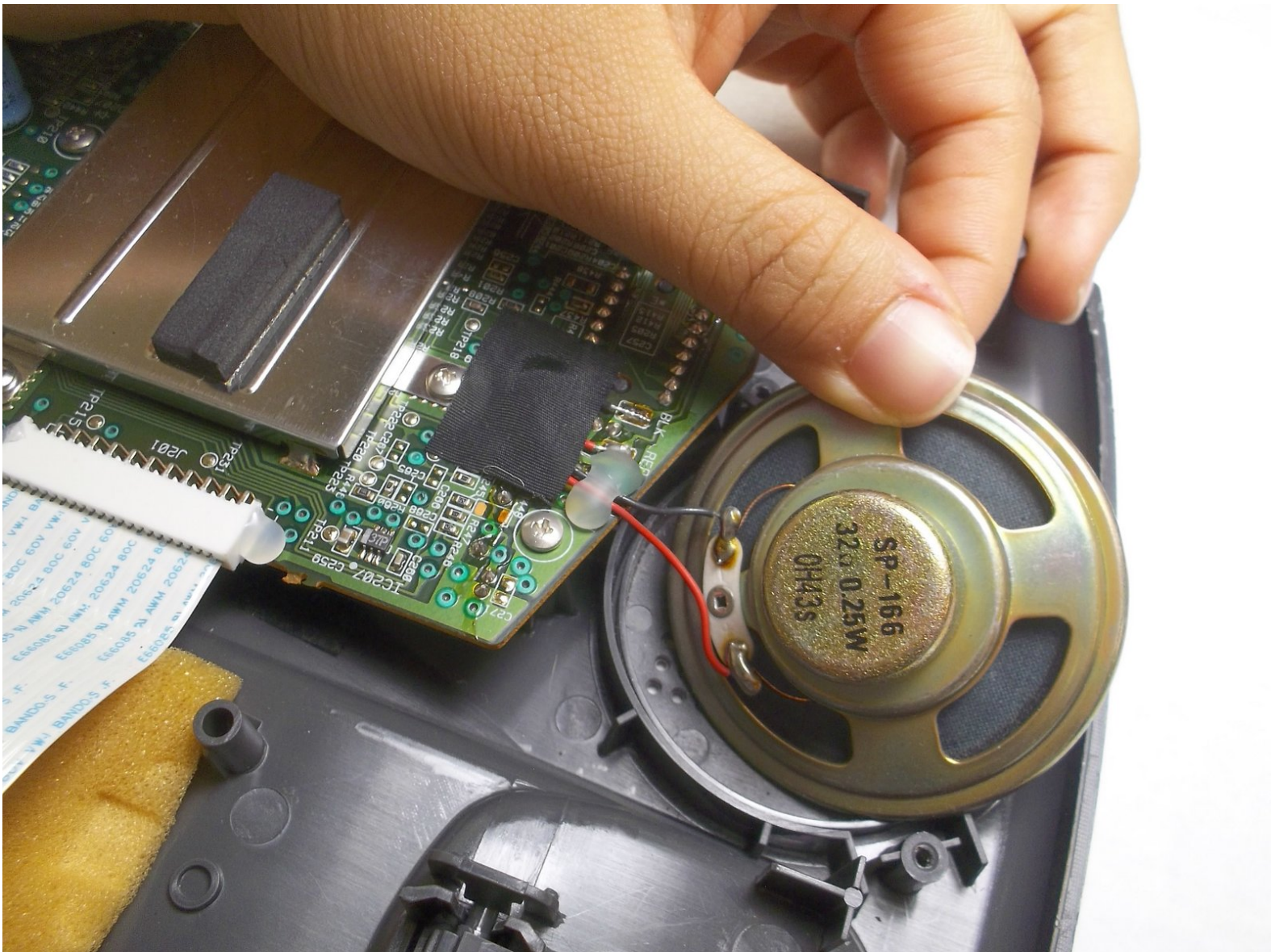




Answering Machine Speaker Replacement

This is a step-by-step guide on how to replace the speaker on the base, or the answering machine.

Written By: Troy Chester



INTRODUCTION

Is the speaker on your answering machine not working well? This is the guide for you!



TOOLS:

- [Spudger](#) (1)
 - [Phillips #0 Screwdriver](#) (1)
 - [Soldering Workstation](#) (1)
 - [Soldering Iron](#) (1)
-

Step 1 — Base




- Turn the base over. You will see four 11mm Phillips #0 screws, one in each corner.
- Use a screwdriver to remove all four 11mm Phillips #0 screws.

Step 2

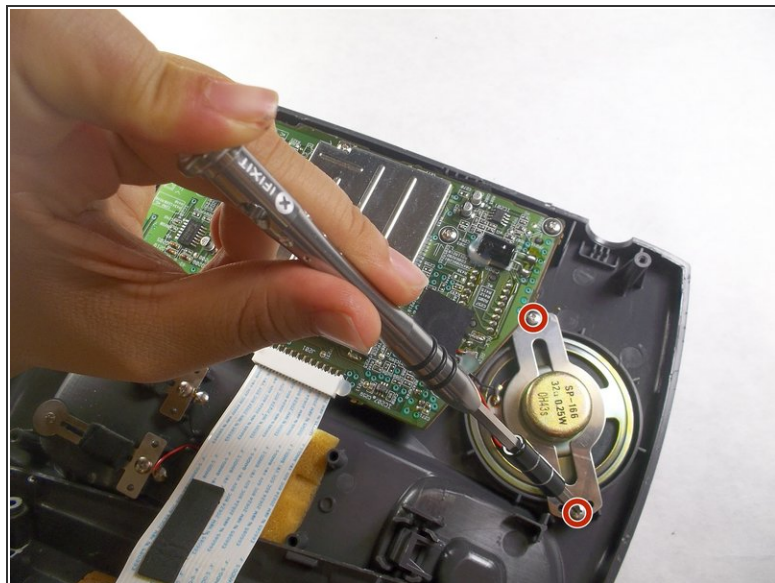


- Locate an easy seam for entry and insert the metal spudger to separate the plastic. Use the spudger in multiple places if necessary.

 Opening the base may require exerting significant force as it is bound together tightly. This step can be dangerous.

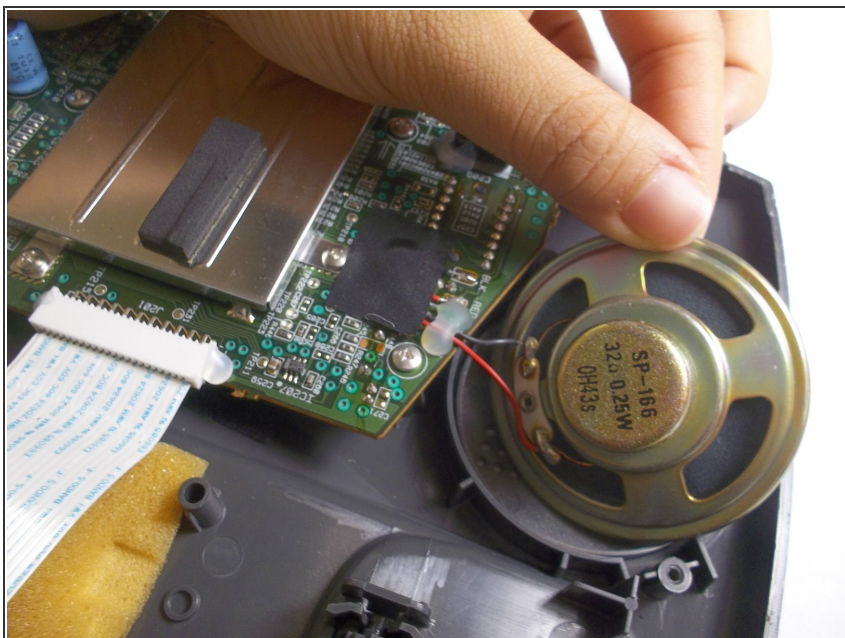
 The spudger is designed to make this step easier.

Step 3 — Answering Machine Speaker



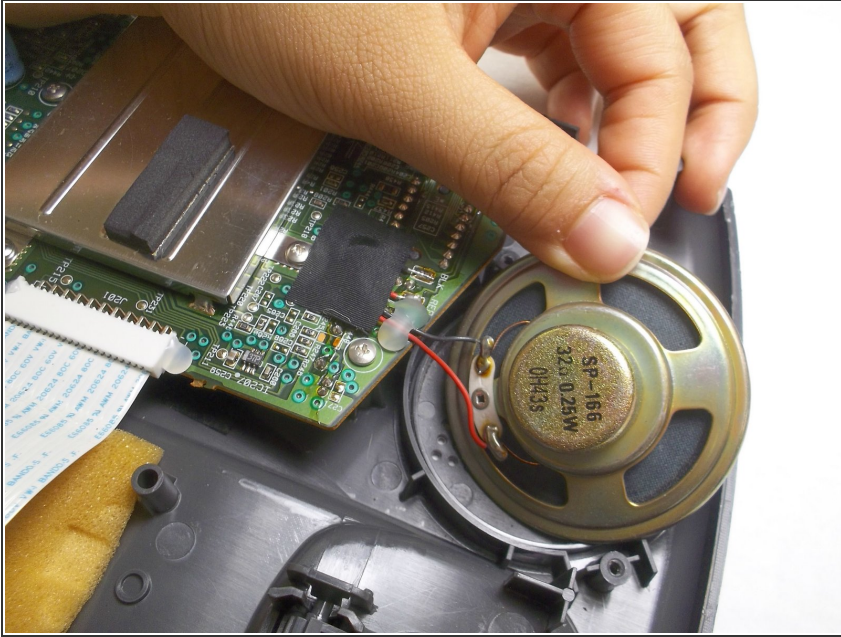
- Locate the speaker at the top left of the base as pictured. It is the silver, conical component. Two 7mm Phillips #0 screws hold the speaker in place.
- Use a screwdriver to remove the two 7mm Phillips #0 screws.

Step 4



- Finish speaker removal by cutting both the black and red wires.

Step 5



- Solder your replacement speaker into the circuit. For assistance with soldering check out the [iFixit Solder and Desolder Guide](#).

To reassemble your device, follow these instructions in reverse order.