



# Epson Powerlite S5 Projection Lamp Replacement

This guide will demonstrate how to replace the projection lamp in an Epson Powerlite S5 Projector.

Written By: Greg Brown



## INTRODUCTION

The Epson Powerlite S5 projection lamp will need replacement after about 3000 hours of use. If you get an orange blinking light or "replace lamp" message, this guide will help in bringing your projector back to life.



### TOOLS:

- [Phillips #1 Screwdriver](#) (1)



### PARTS:

- [V13H010L41 Projector Lamp Bulb with Housing](#) (1)

## Step 1 — Projection Lamp



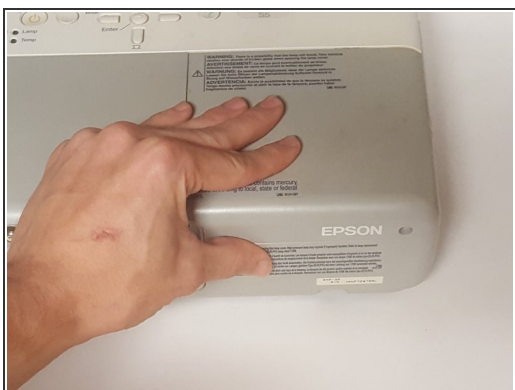
- Make sure the power is off before beginning.
  - Unplug the projector's power cord from the wall.
- ⚠ Allow the projection lamp to cool completely before replacing.

## Step 2



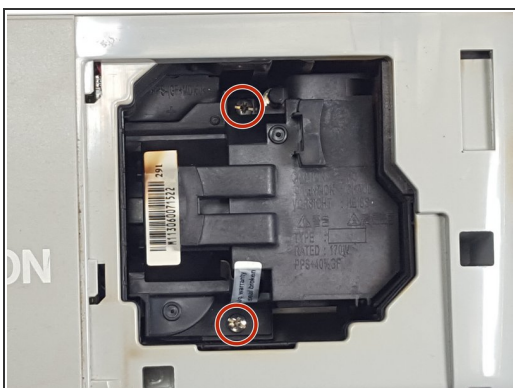
- Using a Phillip's head screwdriver, remove the screw from the back.

## Step 3



- Slide the cover back.
- Lift cover to remove.

## Step 4



- Locate the two screws on either side of the projection lamp.
- Using a Phillip's head screwdriver, loosen the two screws.
- i** The screws only loosen. You don't have to worry about them falling out.



## Step 5



- Grip the two plastic bars on the top of the old projection lamp.
- Remove the projection lamp by pulling straight up.

**⚠ If there is any lamp breakage, handle the shards carefully to avoid injury.**

To reassemble your device, follow these instructions in reverse order.