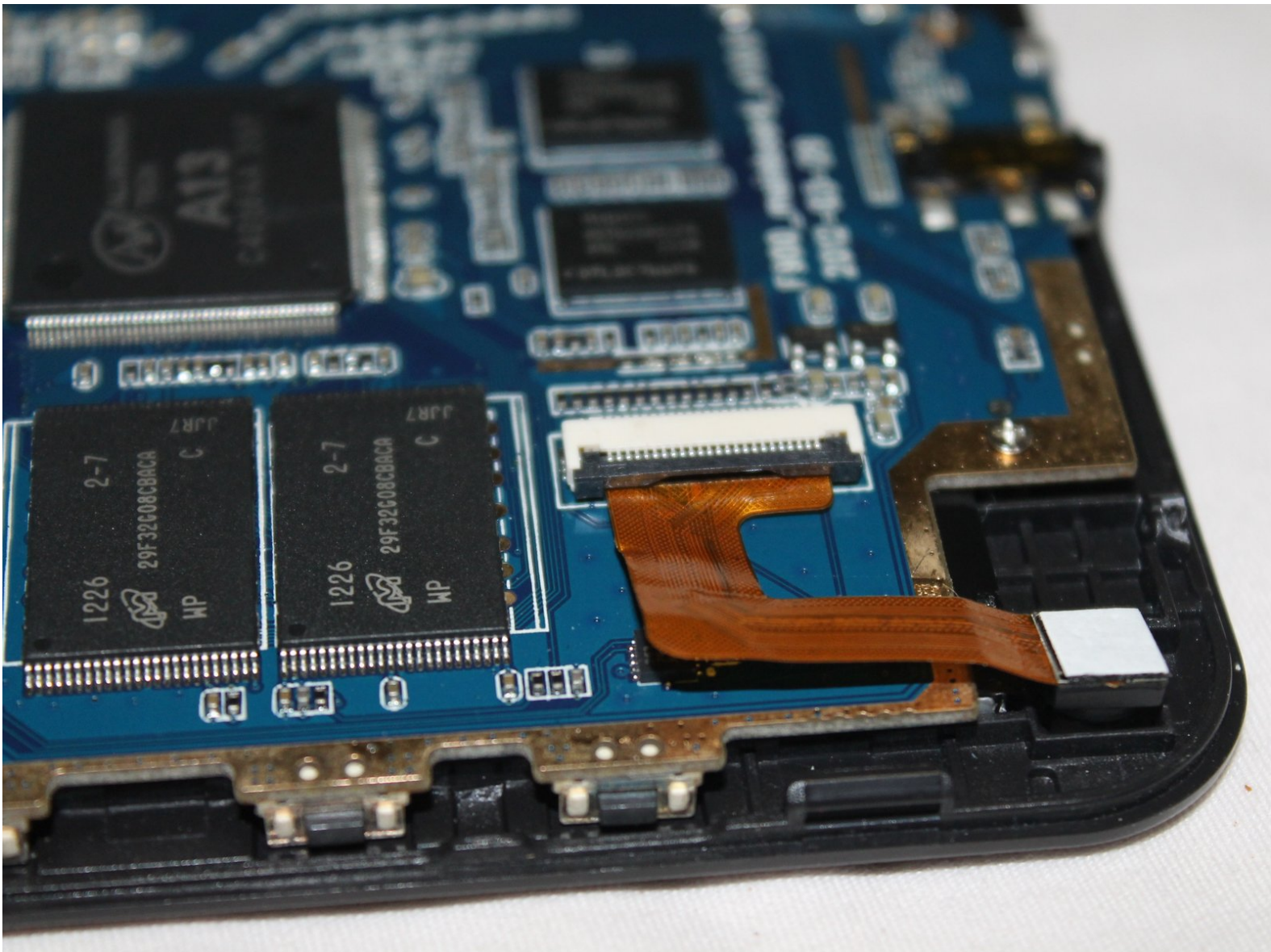




# Mid F900 Camera Replacement

Replace a dying or dead camera within your device

Written By: Jacques Pierre



---

## INTRODUCTION

For this guide, you will be replacing the device's camera. You will need to be mindful and careful of the device's other exposed components when following this guide.

---

### **TOOLS:**

- [JIS Driver Set](#) (1)
  - [iFixit Opening Tools](#) (1)
-

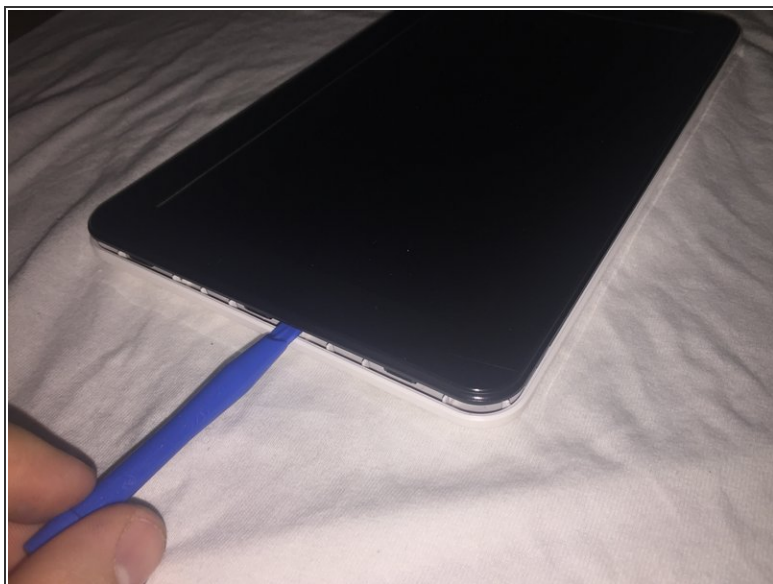
## Step 1 — Back Cover



- Using a J00 Phillips-head screwdriver, remove the two screws located at the bottom of the device.

ⓘ Screws are 5mm x 1mm in size.

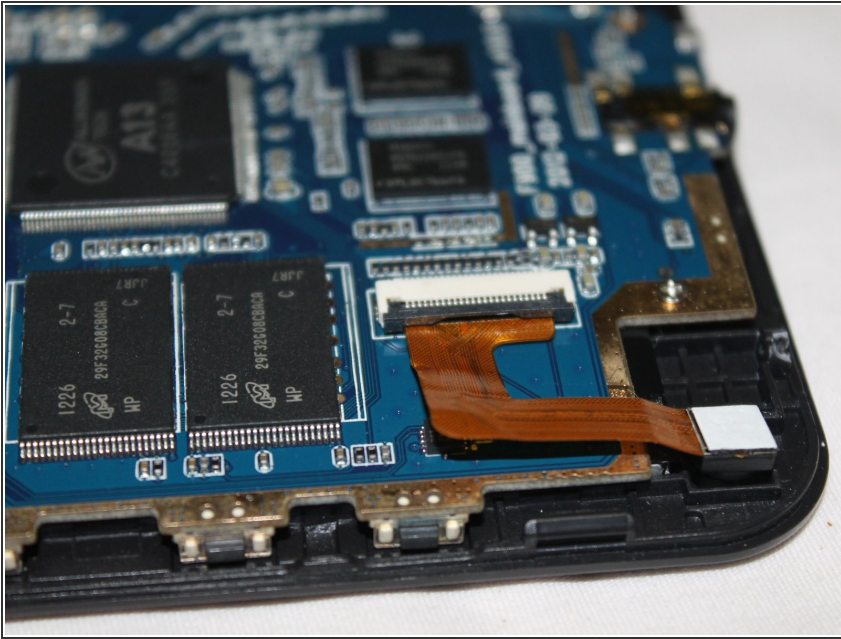
## Step 2



- Use the plastic opening tool to pry off the white back-plate of the device.

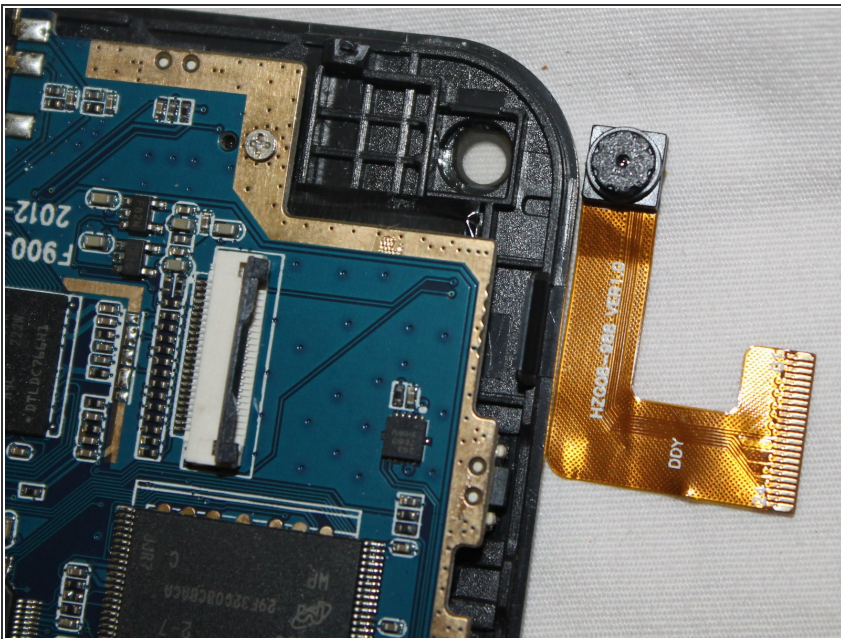


## Step 3 — Camera



- Near the top left of the device, gently unclip the gold ribbon cable by pulling up the black clip holding it in place and removing the ribbon.

## Step 4



- Remove the old camera by carefully lifting it straight up.
- Place the new camera in its place.

To reassemble your device, follow these instructions in reverse order.