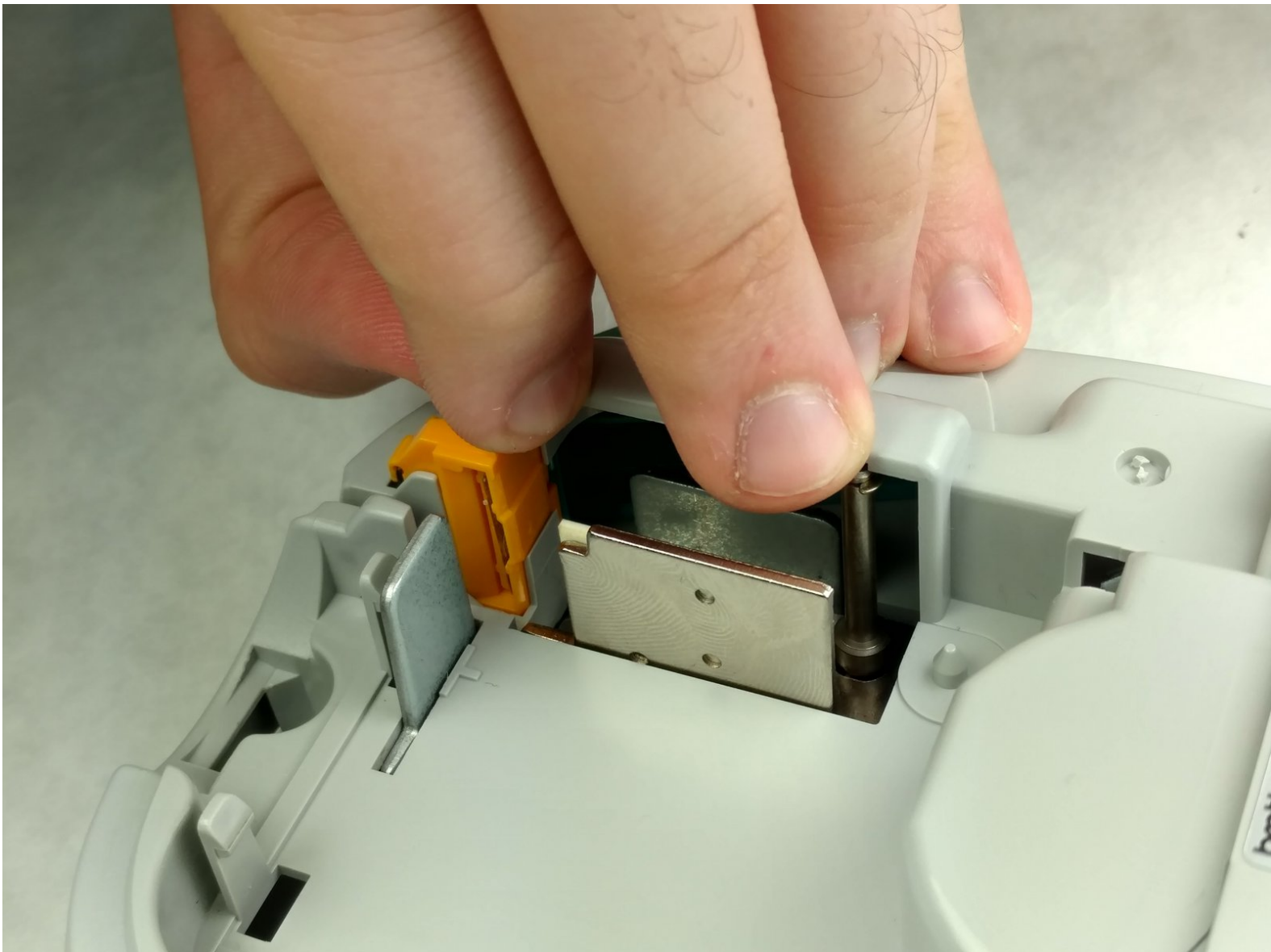




Brother PT-110 Paper Cutter Replacement

Use this guide if you need to remove or replace the paper cutter.

Written By: Kimberly Larsen



INTRODUCTION

The paper cutter is located at the rear of the device, at the top right-hand side.

Step 1 — Tape Cassette



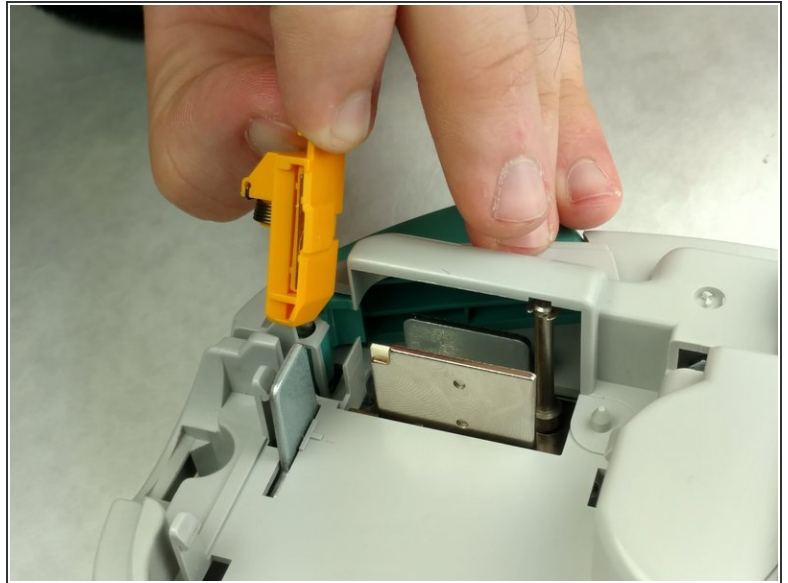
- Push on the side of the cover, and pull up to remove it.

Step 2



- Remove the tape cassette.

Step 3 — Paper Cutter



- Lift up the cutter.

To reassemble your device, follow these instructions in reverse order.