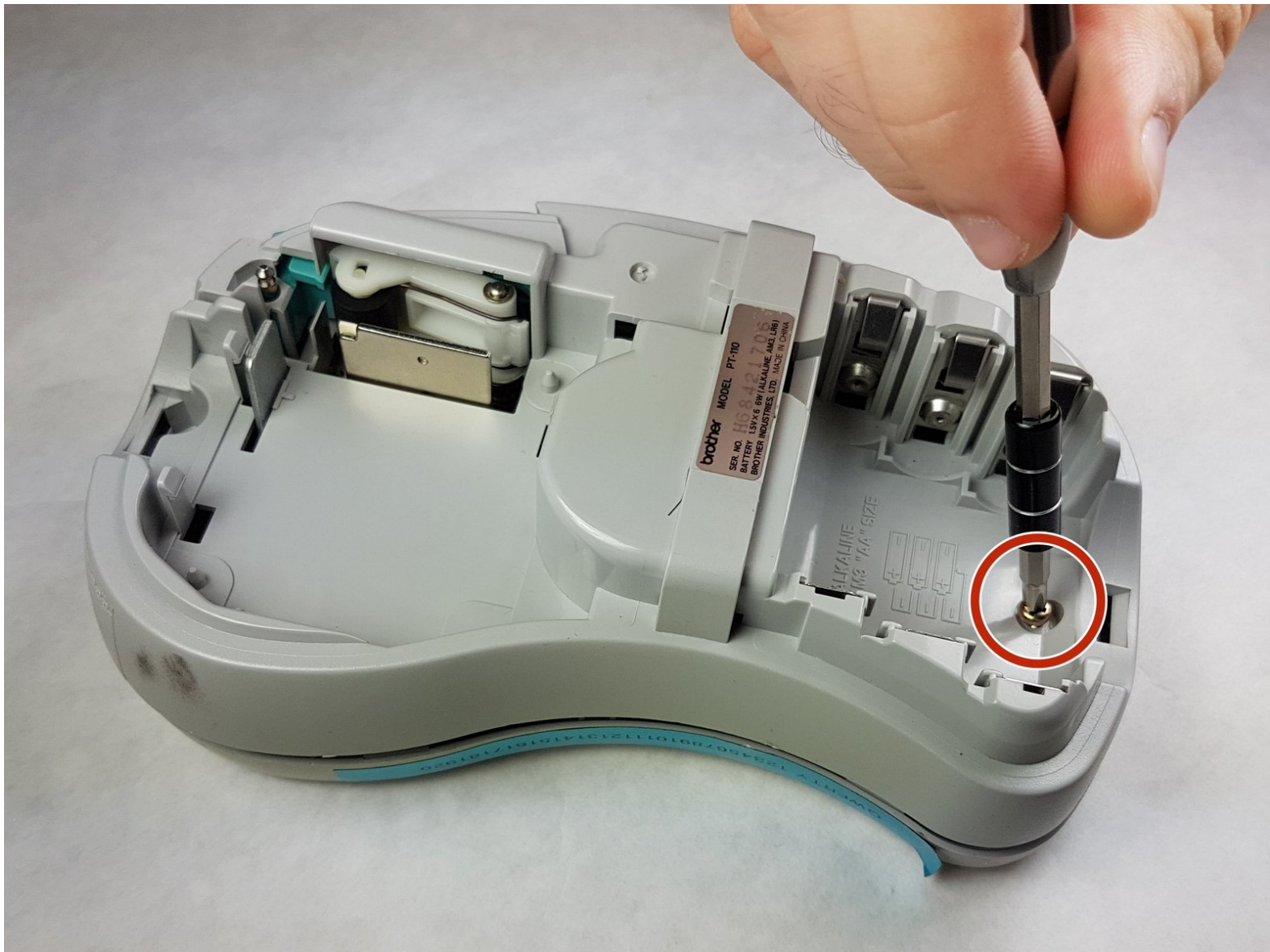




# Brother PT-110 Back Plate Replacement

This prerequisite step shows how to disassemble the bottom plate from the top plate.

Written By: Kimberly Larsen



## INTRODUCTION

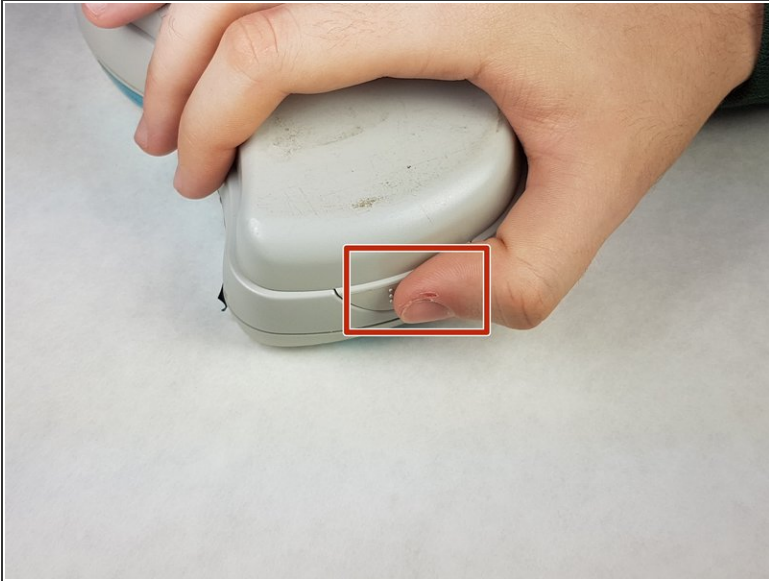
In order to replace or repair the motors, gears, etc., the back plate has to be removed. Ensure the batteries are not in the device before starting this guide.

---

### TOOLS:

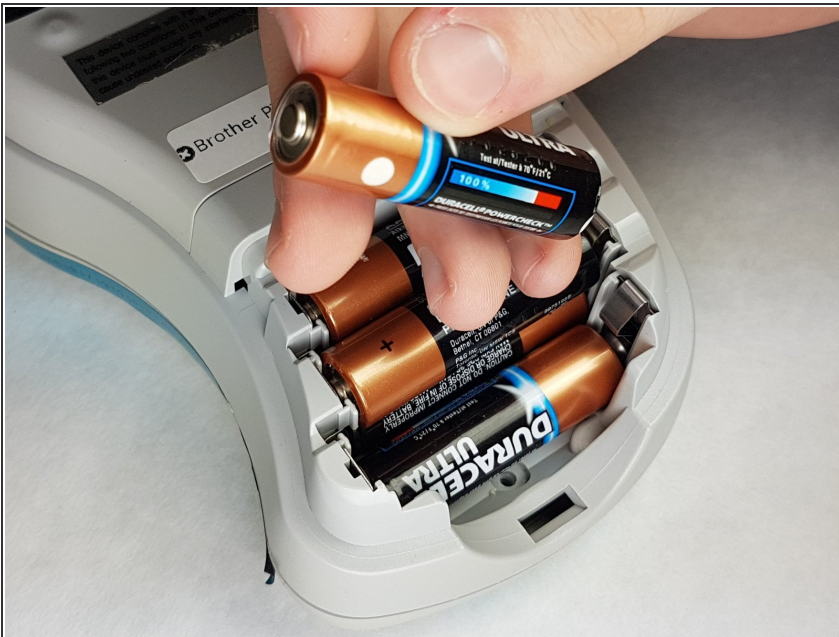
- [Phillips #1 Screwdriver](#) (1)
  - [Metal Spudger](#) (1)
-

## Step 1 — Batteries



- Push on the side of the cover, and remove it.

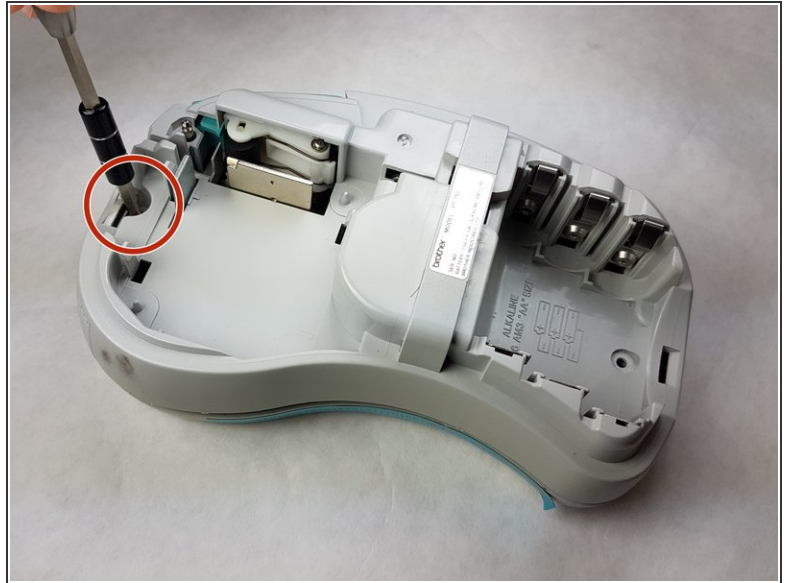
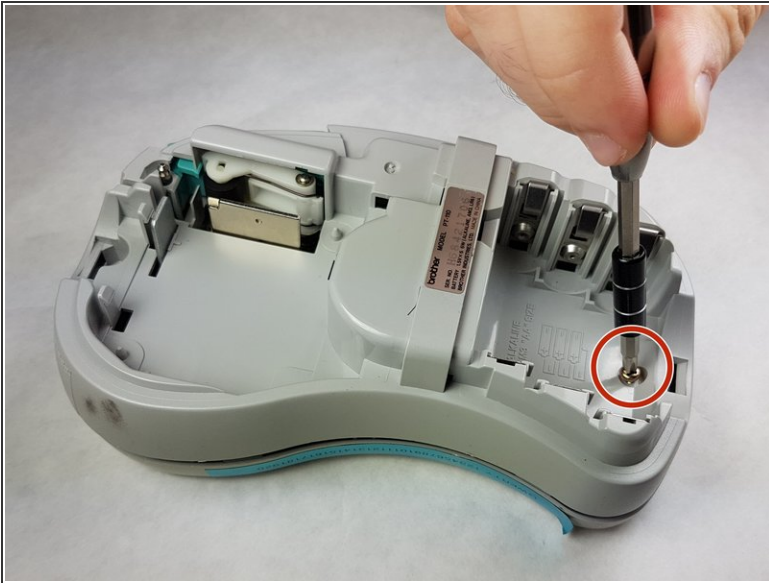
## Step 2



- Remove the batteries.



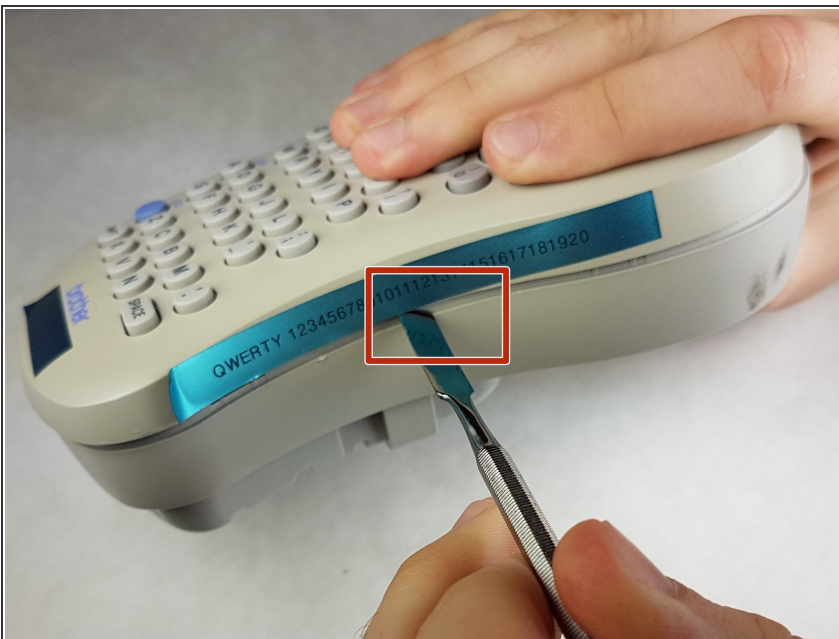
## Step 3 — Back Plate



- Unscrew the two 9 mm Phillips #1 screws from the top and bottom.

**i** Total: 2 x Screws

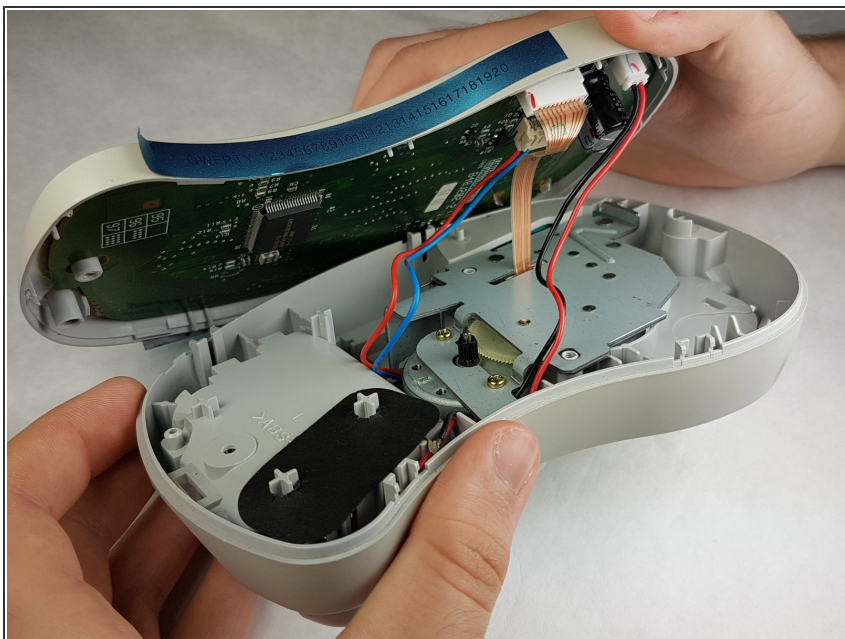
## Step 4



- First: To separate the top cover from the body, insert a spudger between the two halves.
- Gently twist the spudger until the two halves separate. Do this in multiple spots around the perimeter of the cover to distribute the pressure.

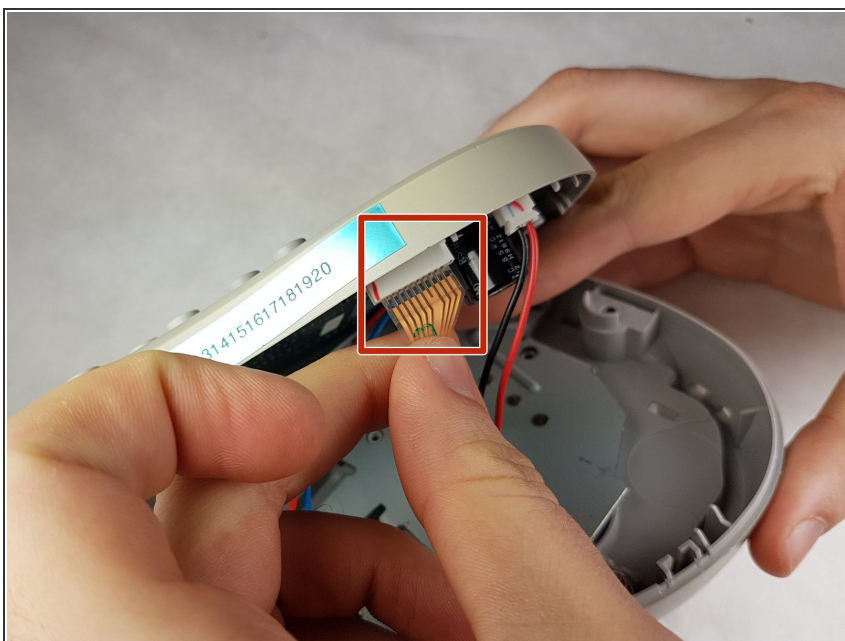
**⚠ DO NOT PULL HALVES APART.**  
There are wired connections inside that must be disconnected before halves can be fully separated.

## Step 5



**⚠ Gently separate the two covers, ensuring wires are not taut.**

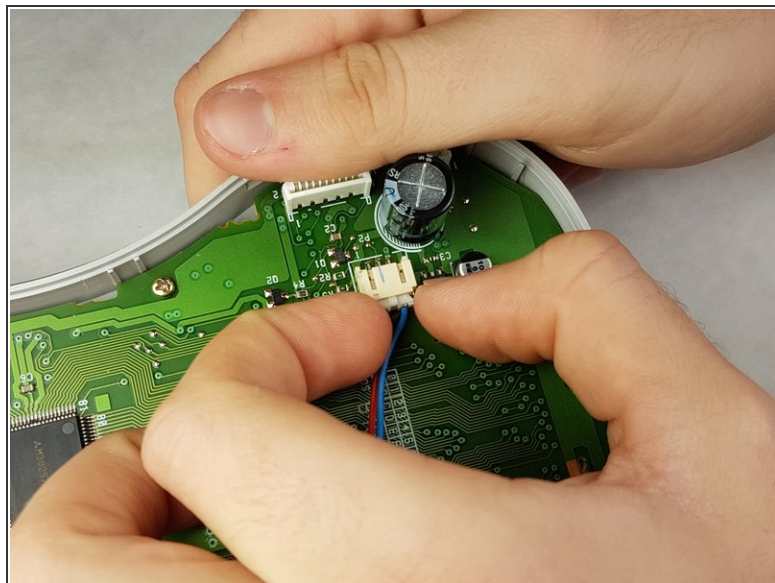
## Step 6



- Gently grasp the ribbon wire and top cover, then gently pull the ribbon wire out of its connection.

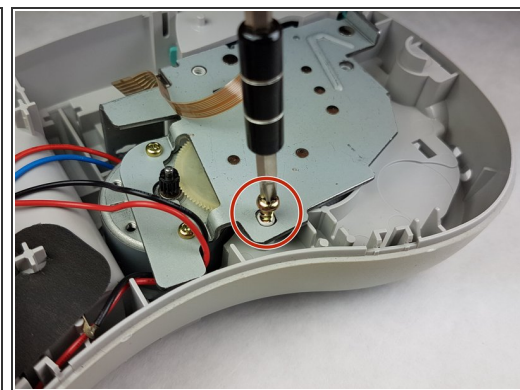
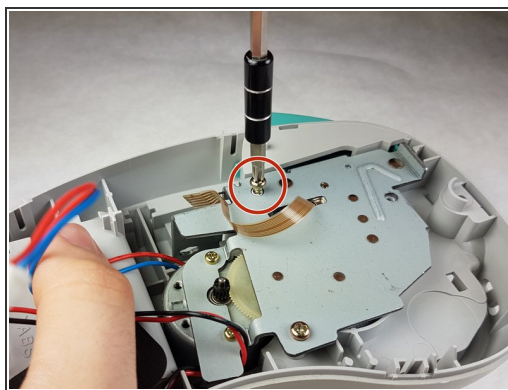
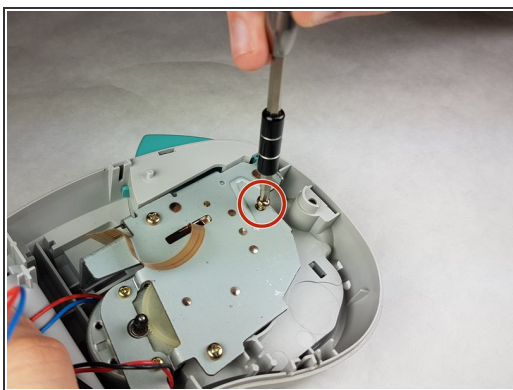


## Step 7



- Carefully pinch the top of the connector.
- Pull perpendicular to the device until the wire is disconnected.
- ⓘ It may require more force than expected to disconnect the wires.

## Step 8



- Unscrew the three 9 mm Phillips #1 screws shown.
- ⓘ Total: 3 x Screws

To reassemble your device, follow these instructions in reverse order.

This document was generated on 2021-09-13 05:50:31 AM (MST).

