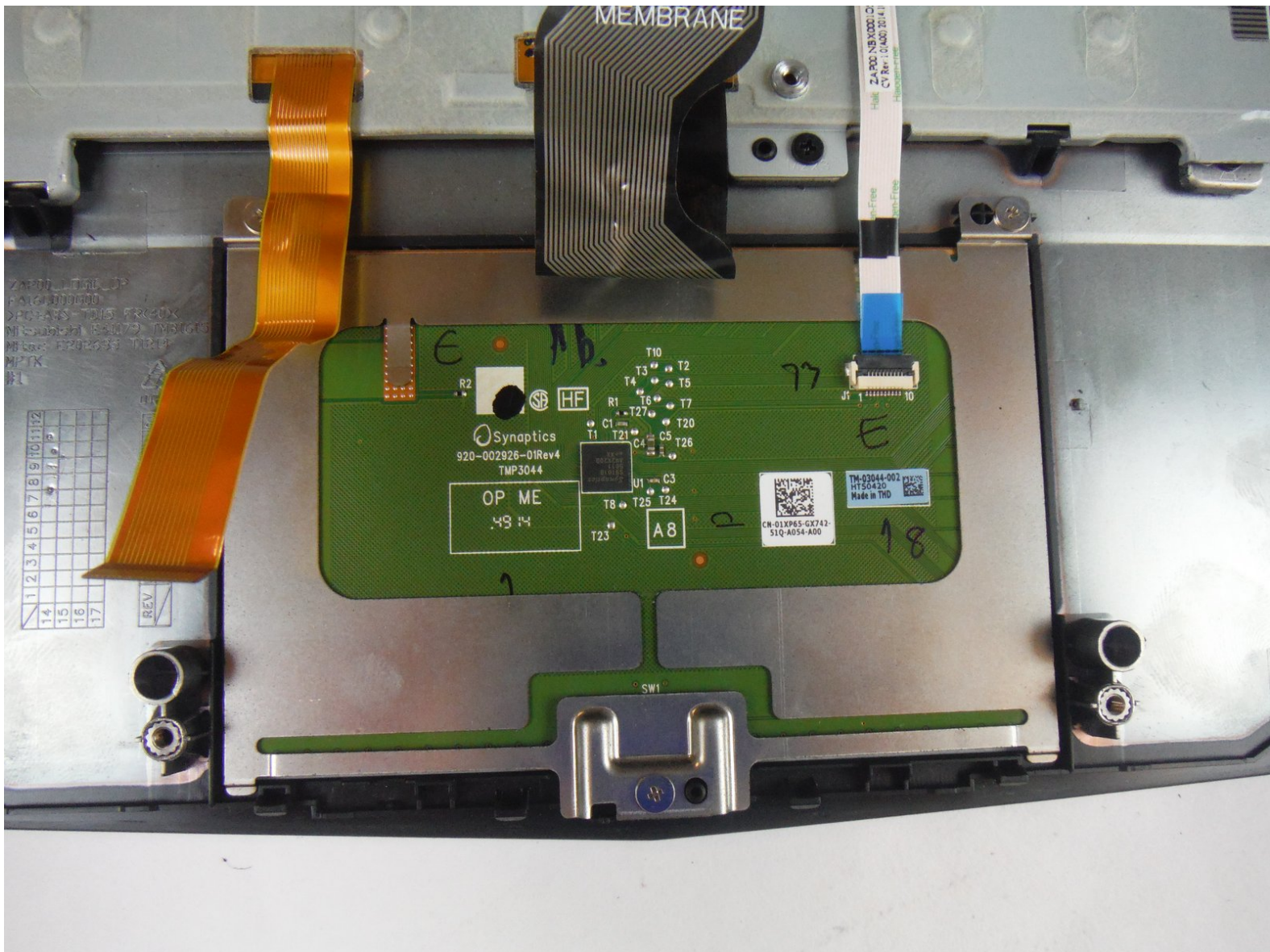




Written By: Adam Russell



Page 1 of 11

INTRODUCTION

This guide will show the user how to replace a broken touch pad that is not functioning properly on a Dell Alienware 13 laptop.

TOOLS:

- [Heavy-Duty Spudger](#) (1)
 - [Phillips #1 Screwdriver](#) (1)
 - [Phillips #0 Screwdriver](#) (1)
-

Step 1 — Base Panel



⚠ Working on an electrical device while plugged in can cause injury due to electrical shock. Ensure that all external power is disconnected from the device.

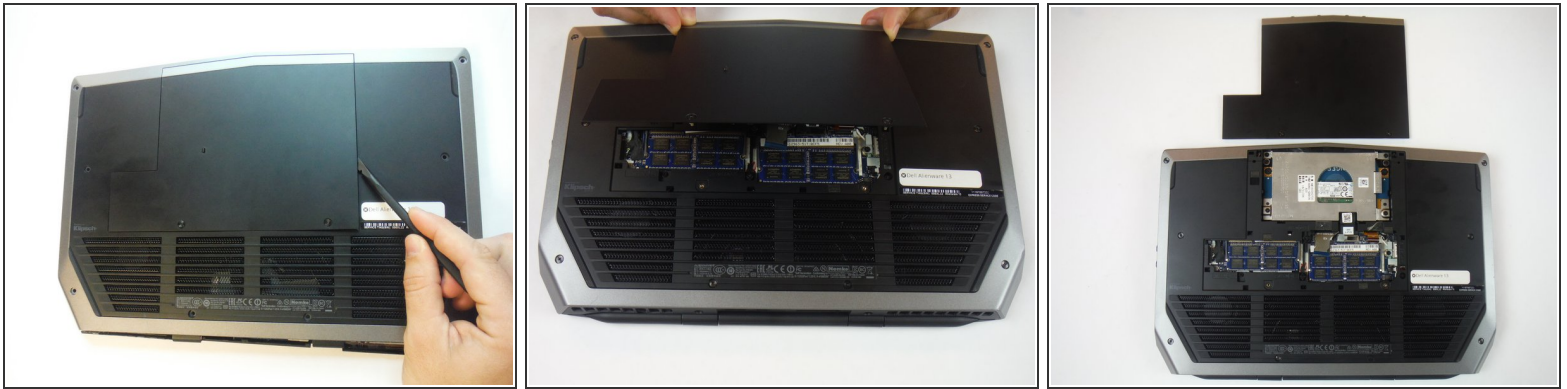
- Close the device and turn the device over.

Step 2



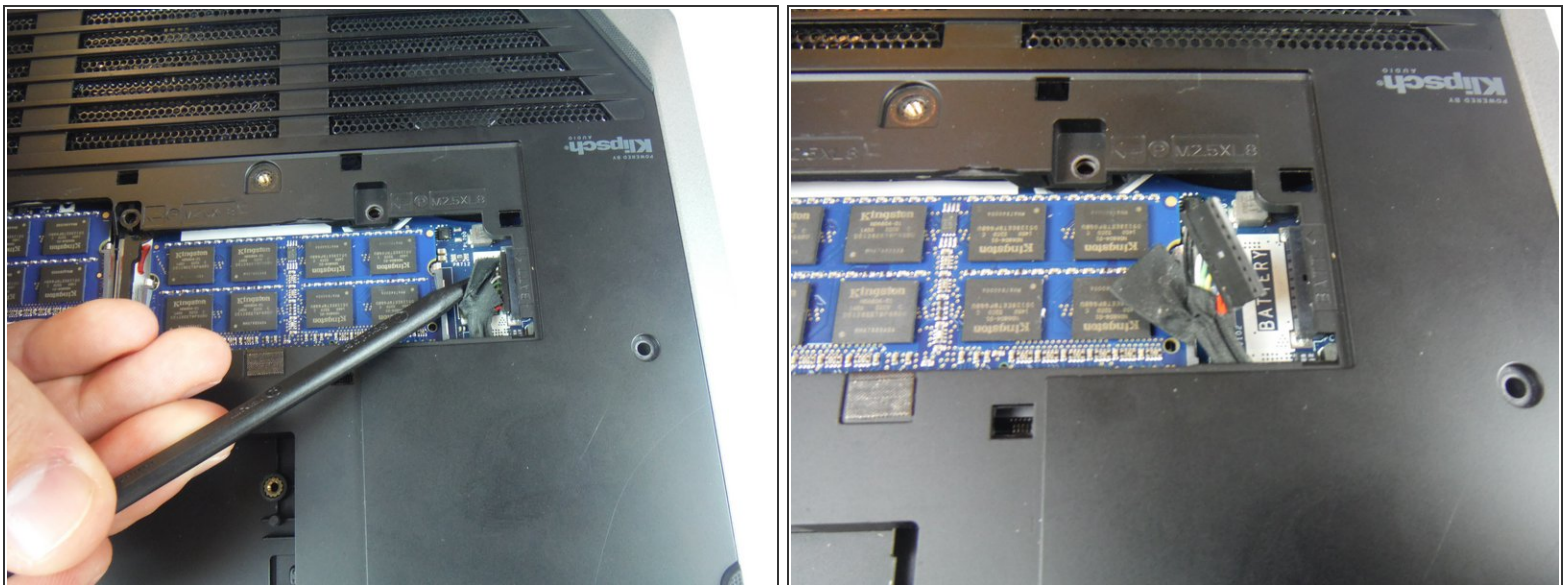
- Remove (2) 5 mm Phillips head screws attaching the small access panel to the base using a Phillips # 1 screwdriver.
- ⓘ The (2) screws are attached to the base panel with retaining clips and won't completely detach from the panel.

Step 3



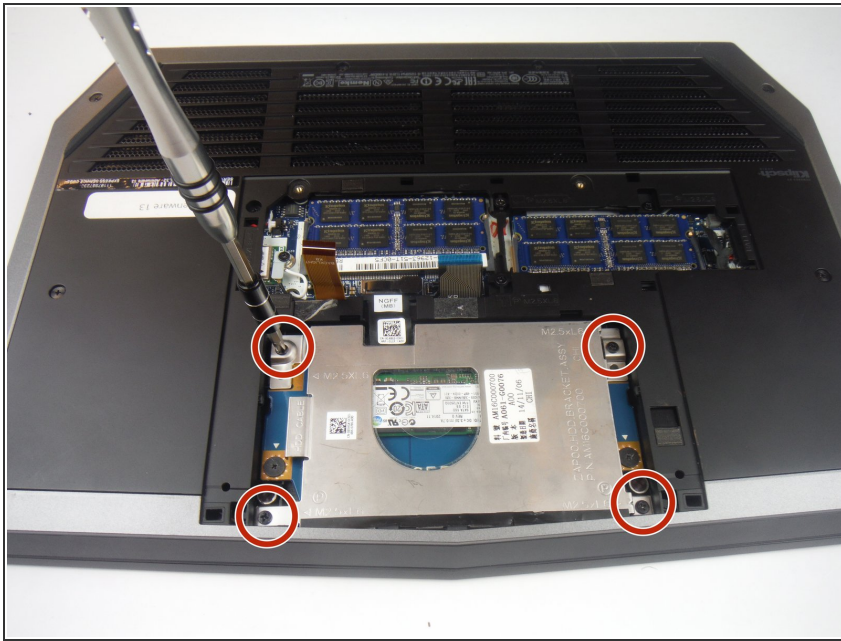
- Remove the small access panel using a heavy duty spudger.

Step 4 — Touch pad



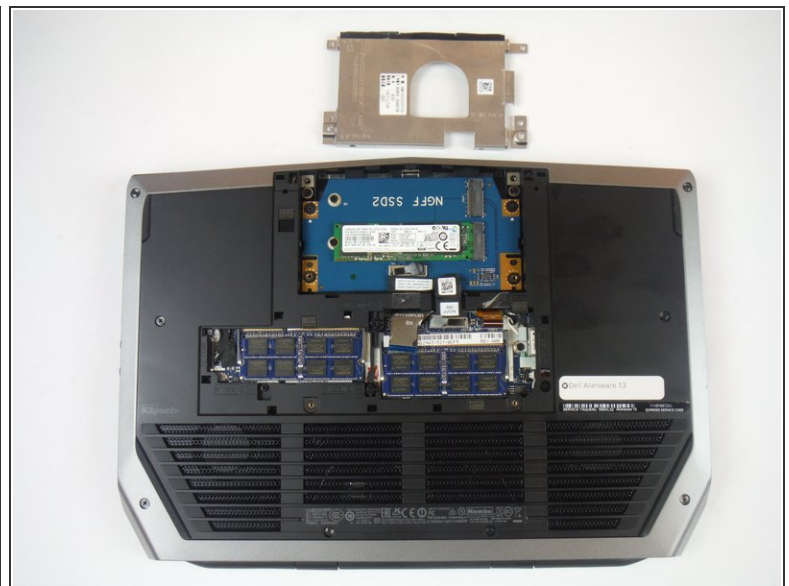
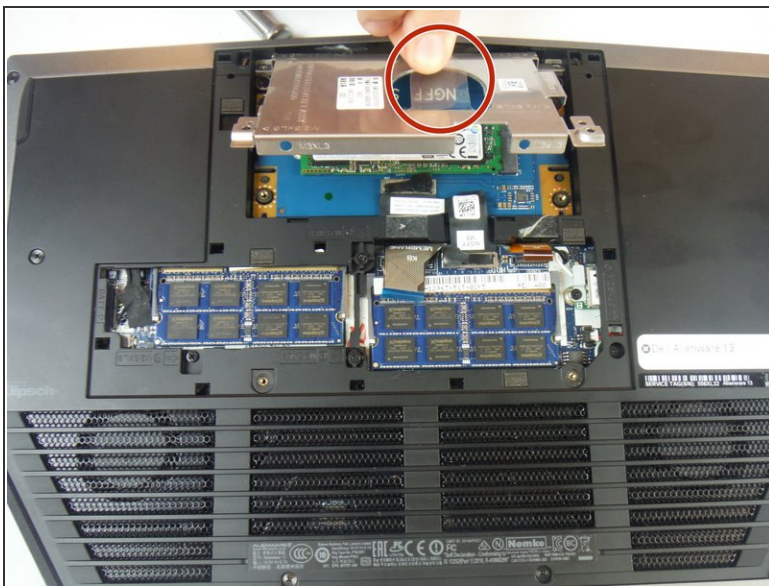
- Disconnect the battery cable from the battery cable terminal.

Step 5



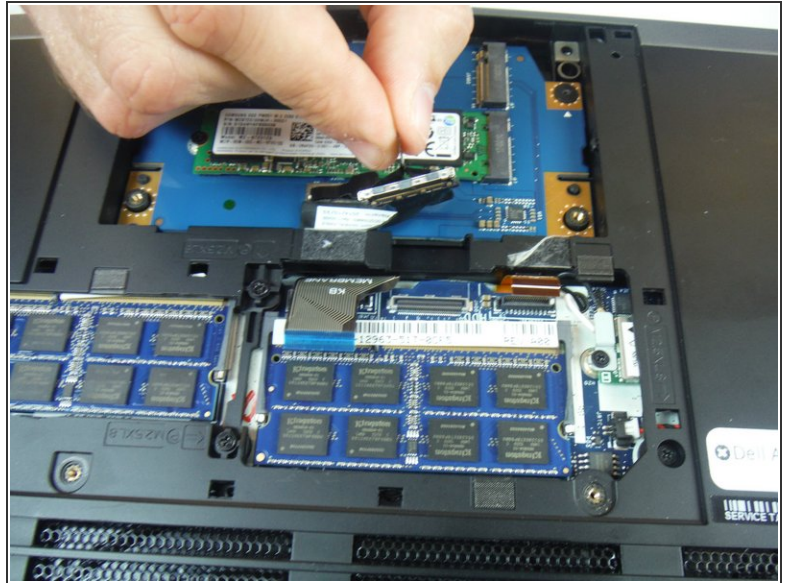
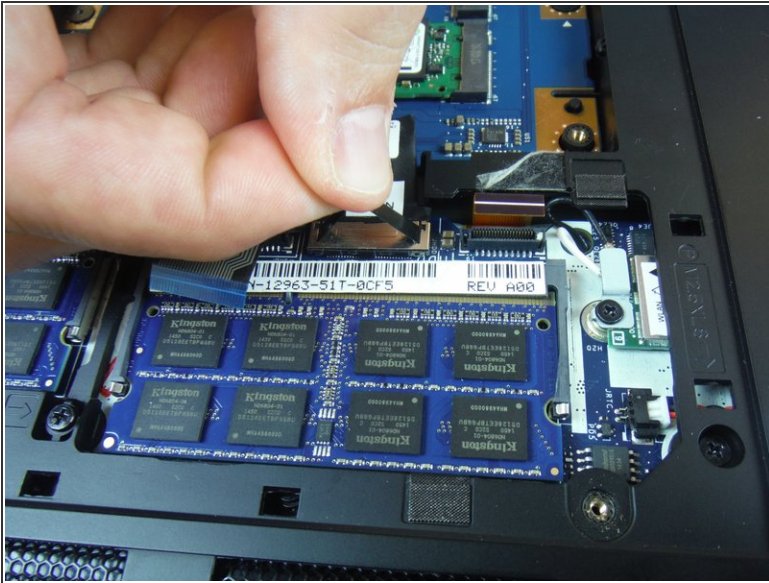
- Remove (4) 6 mm Phillips head screws from the solid-state metal drive bracket, using a Phillips # 1 screwdriver.

Step 6



- Grab the pull tab to pivot the solid-state drive bracket upwards. Remove the bracket from the computer base.

Step 7



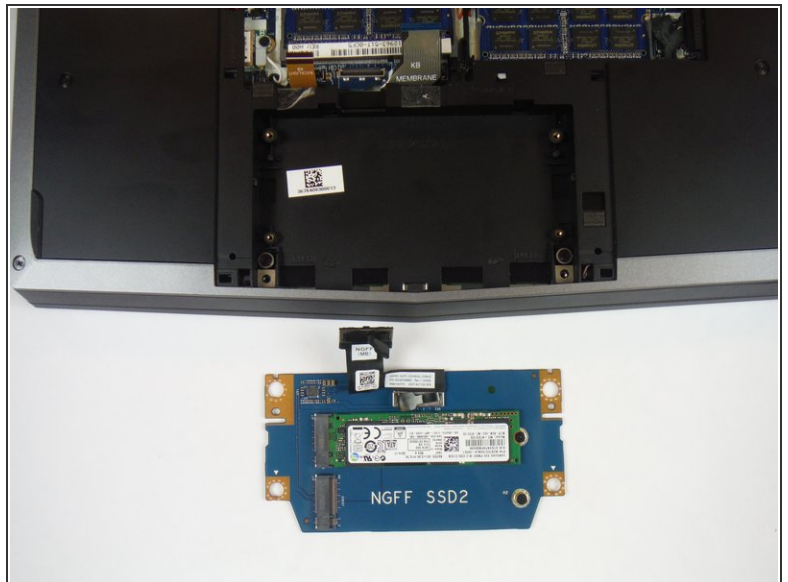
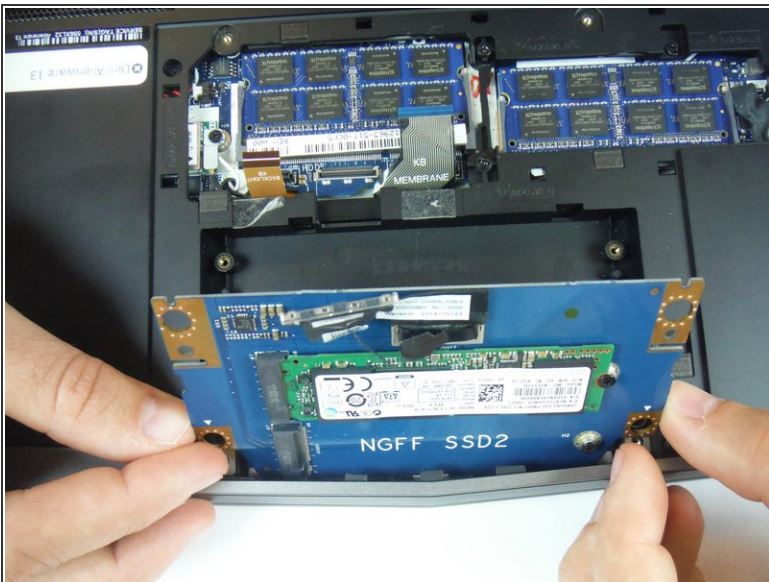
- Using the pull tab, disconnect the black solid-state drive cable from the system board.

Step 8



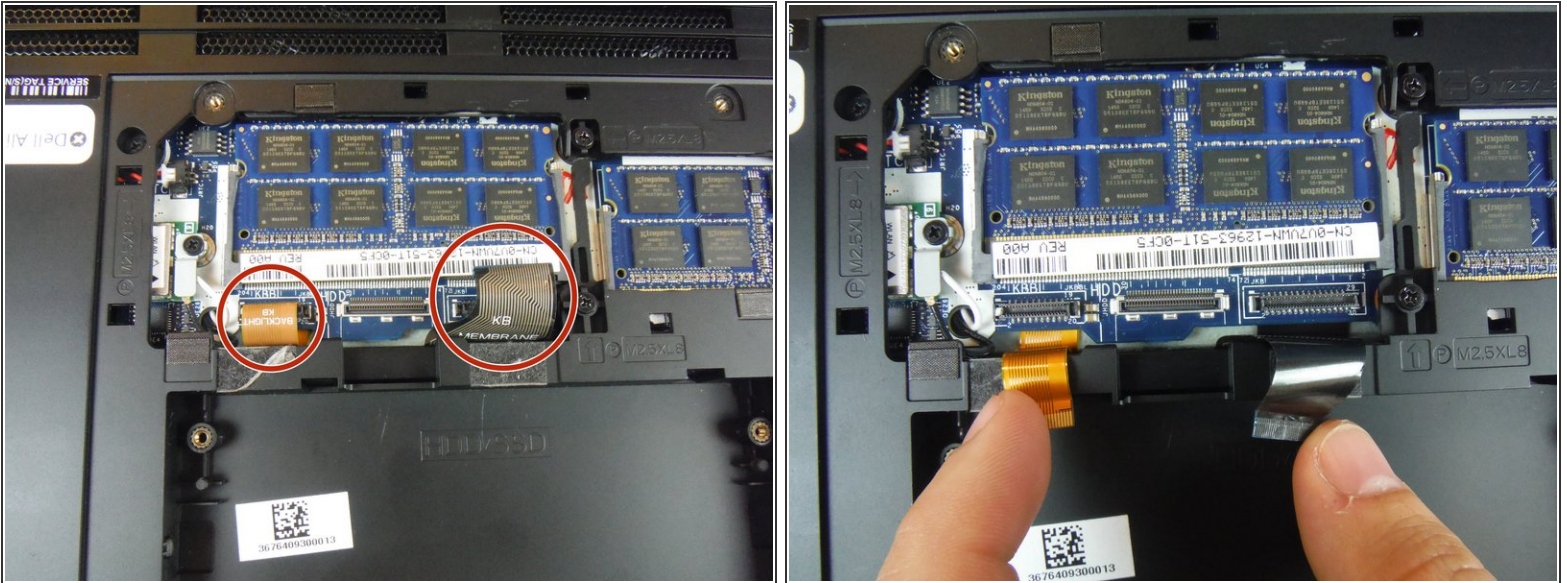
- Remove (2) 3 mm Phillips head screws, using a Phillips # 0 screwdriver, that connect the solid-state drive assembly to the computer base.

Step 9



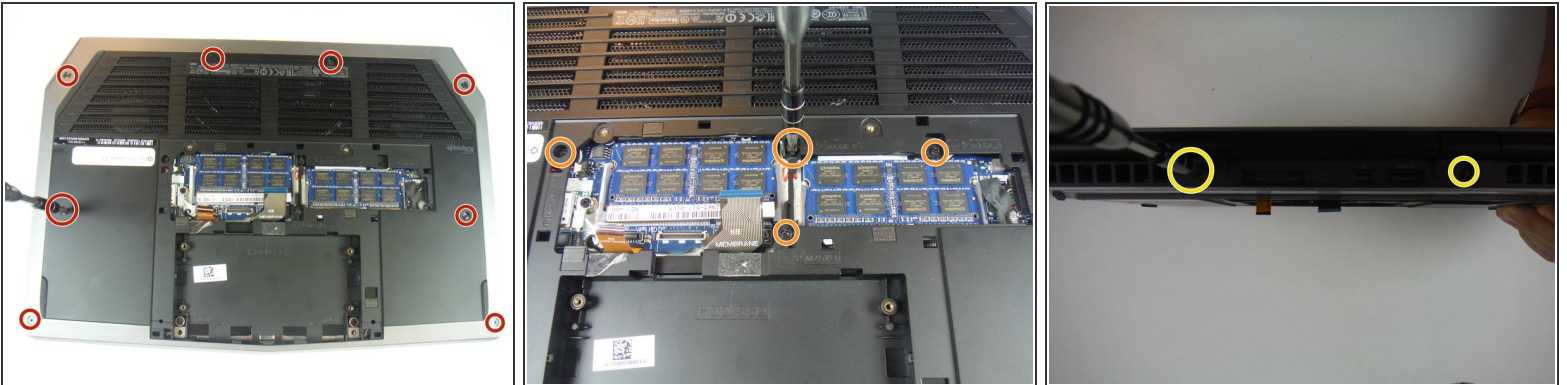
- Lift up on the solid-state drive assembly to remove it from the computer base.

Step 10



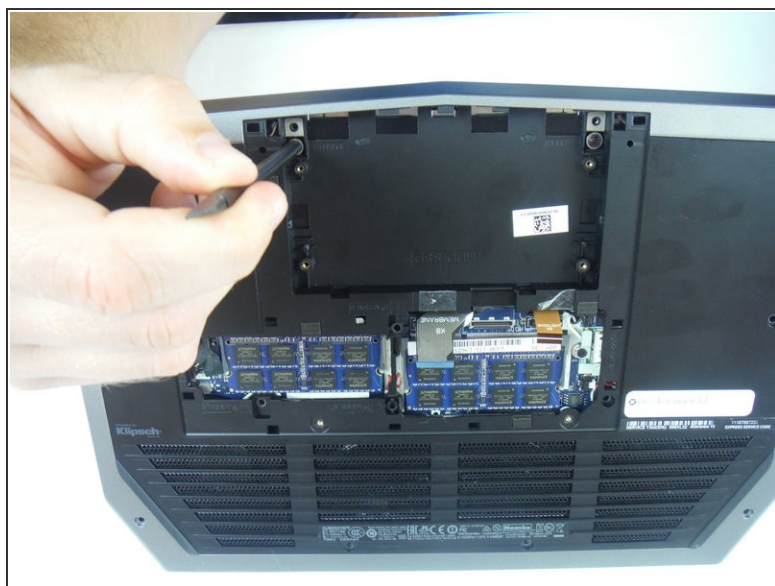
- Locate two cables labeled, "KB Backlight" (orange) and "KB Membrane" (black). Lift up on the latches to disconnect the cables from the system board.

Step 11



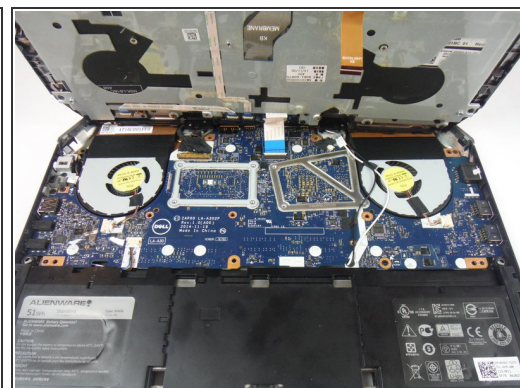
- Remove (8) 9 mm Phillips head screws using a Phillips # 1 screwdriver, that secures the palm-rest assembly to the computer base.
- Remove (4) 8 mm Phillips head screws using a Phillips # 1 screwdriver.
- Remove (2) 7 mm Phillips head screws using a Phillips # 1 screwdriver.

Step 12



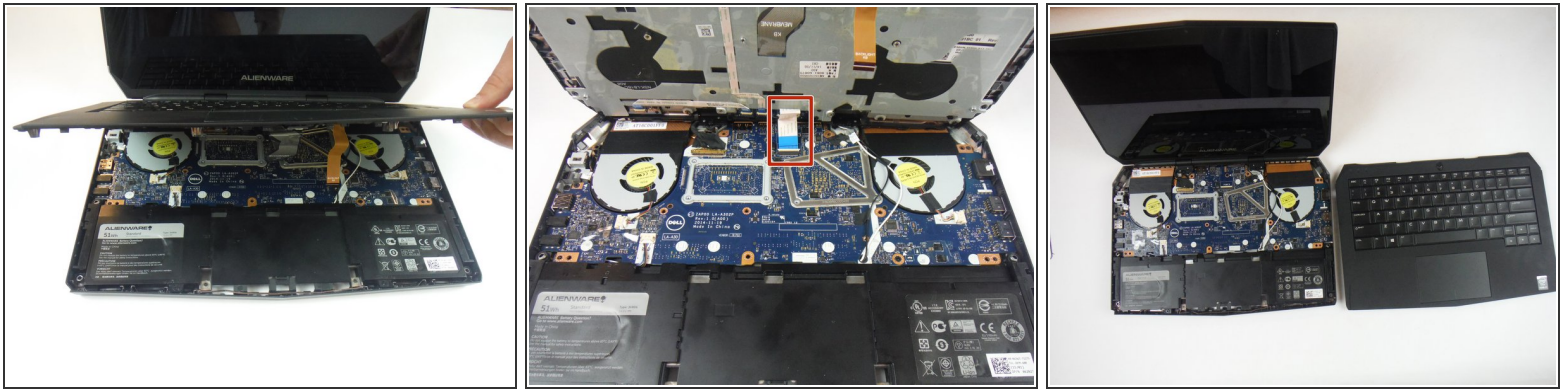
- Lift the computer base slightly towards you and push the release tabs on the palm-rest assembly until it pops out using a spudger.

Step 13



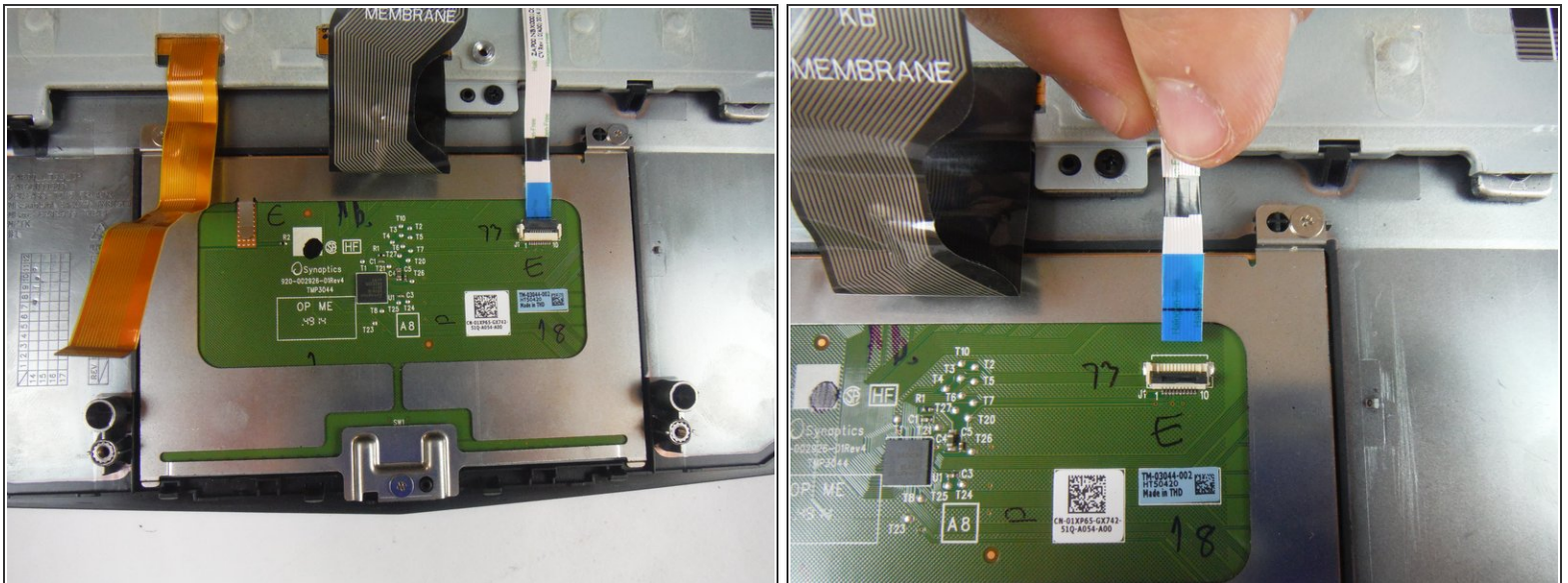
- Turn the computer over and open the display as far as possible.
- Using a plastic spudger, pry up along the edges of the palm-rest assembly.
- Gently lift the palm-rest assembly.

Step 14



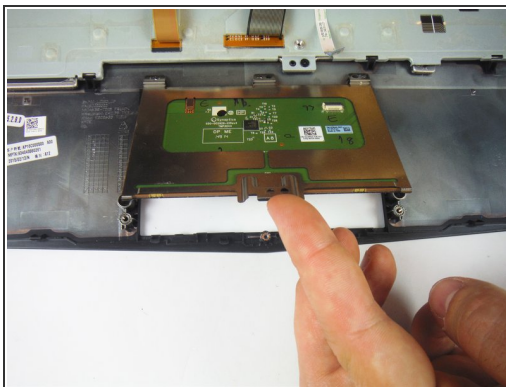
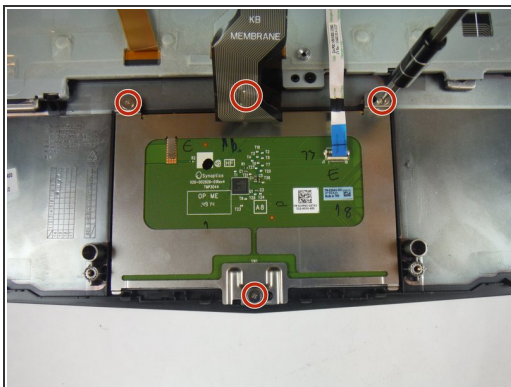
- Lift the connector latch and disconnect the power-button board cable from the system board. Identified as a cable with a blue tab.
- Lift the palm-rest assembly off the computer base.

Step 15



- Disconnect the touch pad cable from the touch pad.

Step 16



- Remove (4) 3 mm Phillips head screws securing the touch pad to the palm rest assembly using a Phillips # 0 screwdriver.
- Lift up and remove the touch pad from the palm rest assembly.

To reassemble your device, follow these instructions in reverse order.