



LG G5 Camera Sensor Replacement

In this guide, you will be removing the rear...

Written By: Parker Reynolds



INTRODUCTION

In this guide, you will be removing the rear camera sensor. Use this guide if you find the rear camera has trouble focusing.

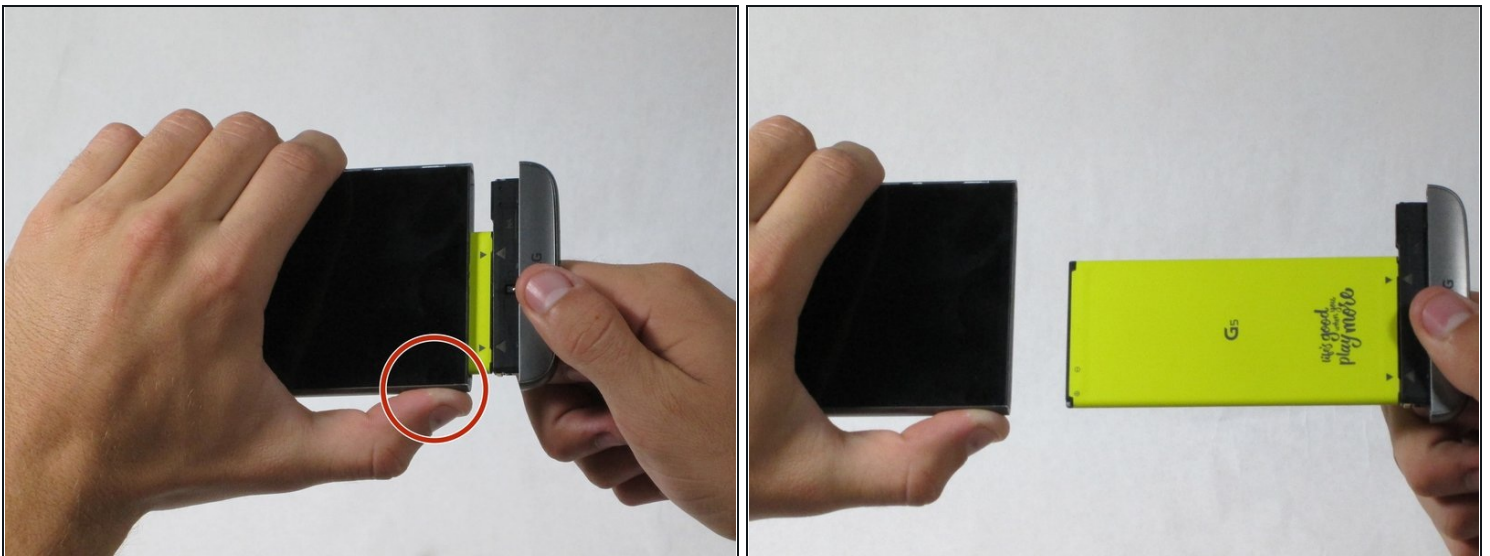
TOOLS:

[Spudger](#) (1)
[Phillips #00 Screwdriver](#) (1)
[iFixit Opening Tool](#) (1)
[SIM Card Eject Tool](#) (1)
[Tweezers](#) (1)

PARTS:

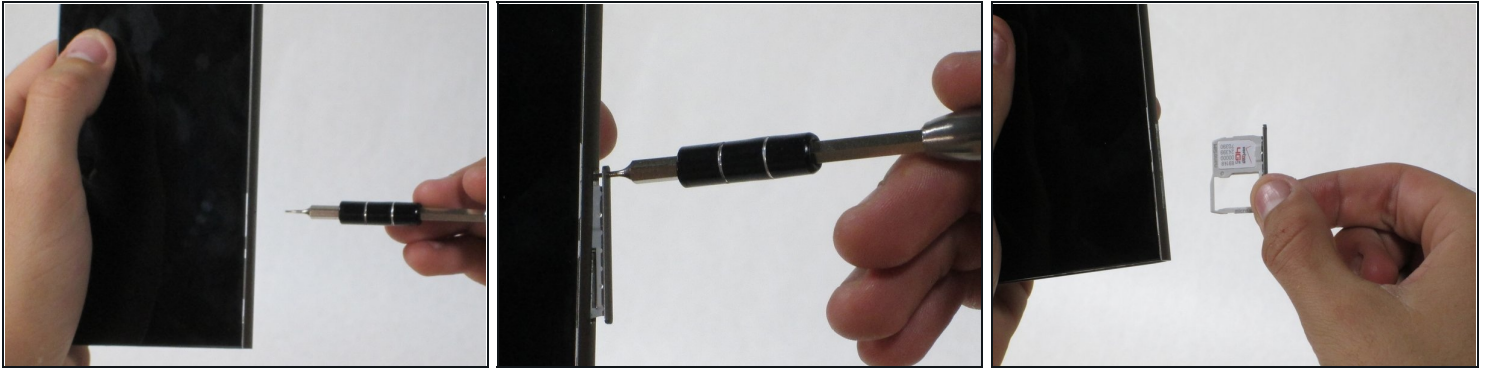
[LG G5 Auxiliary Rear Camera](#) (1)

Step 1 — Front Panel Assembly



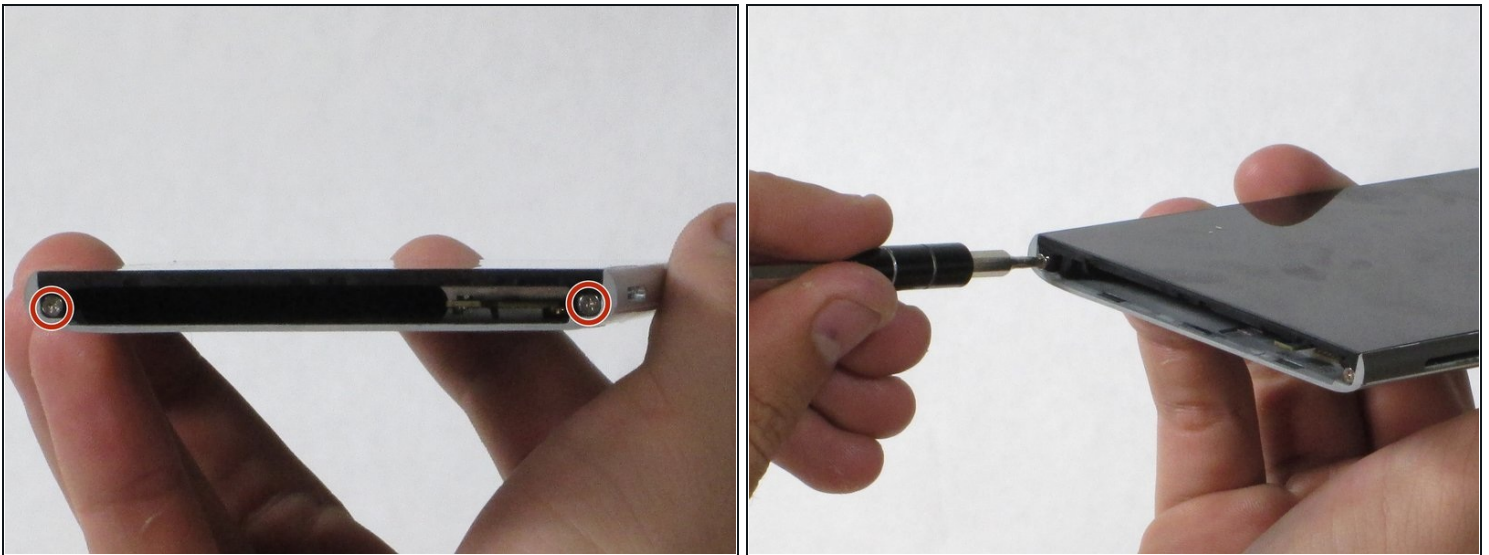
- While holding the battery release button, pull the bottom end of the phone out of the body.

Step 2



- Insert the sim card eject tool (0.8mm sim card eject head) into the small hole on the sim card tray.
- Press inward with some force to eject the tray.
- Pull the sim card tray out of the phone.

Step 3



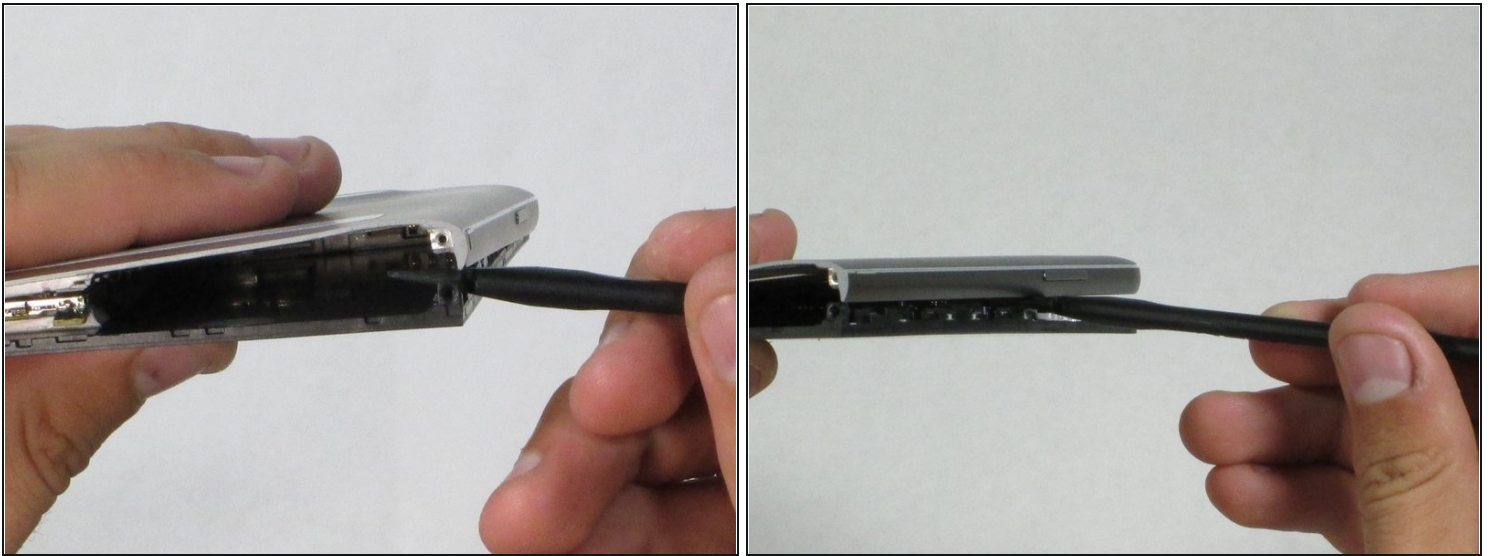
- Remove the two 5.5mm Phillips #00 screws from the base of the phone.

Step 4



- Insert the plastic opening tool into the seam between the glass screen and the metal body.
- Pry the glass from the body only a slight amount.

Step 5



- Insert the Spudger into the now open space between the body and screen.
 - Push inward to separate the screen even more.
 - Slowly slide the nylon spudger up the edge the phone till the screen pops out of the body.
- ☒ When putting the screen back in, press the edges down from the top of the phone to the bottom. The screen should "pop" into place.

Step 6



- Peel the screen away from the body. The two parts should be completely separated.

Step 7 — Screen



- Once the screen has been separated from the back of the phone, now you can remove the motherboard.
- Using the #00 Philips head, remove the six 2.7mm Phillips screws.

Step 8



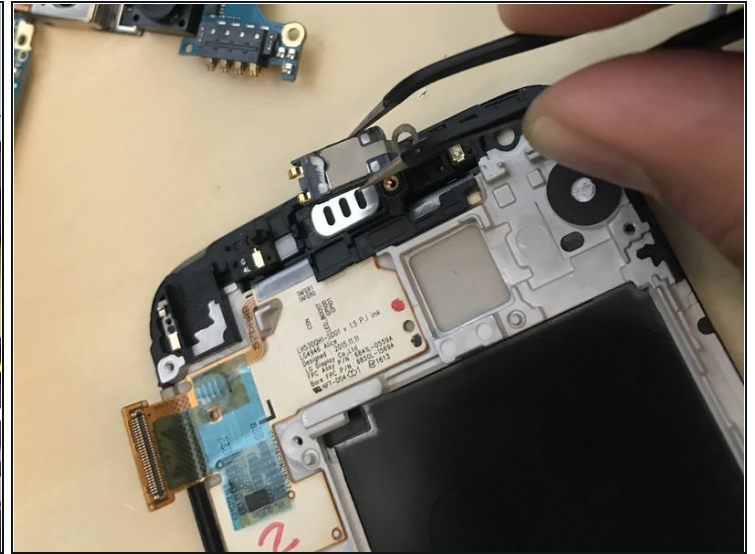
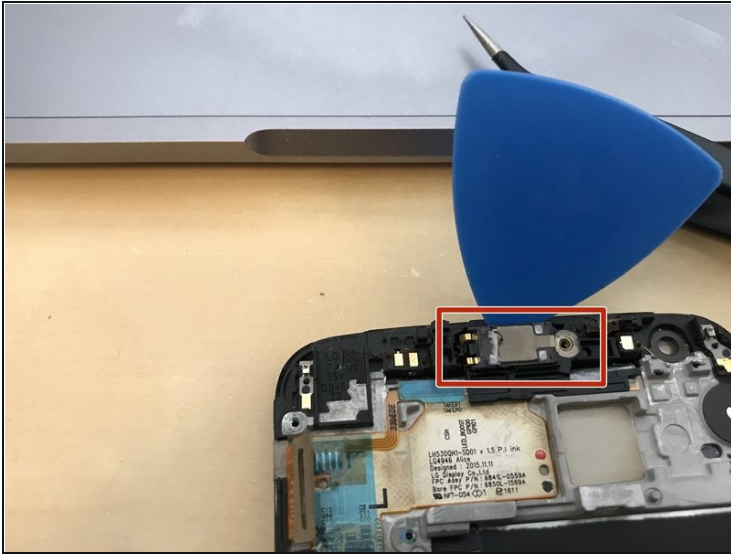
- Insert the plastic opening tool between the screen-ribbon-connector and the motherboard, then pull up. It should pop out easily.

Step 9



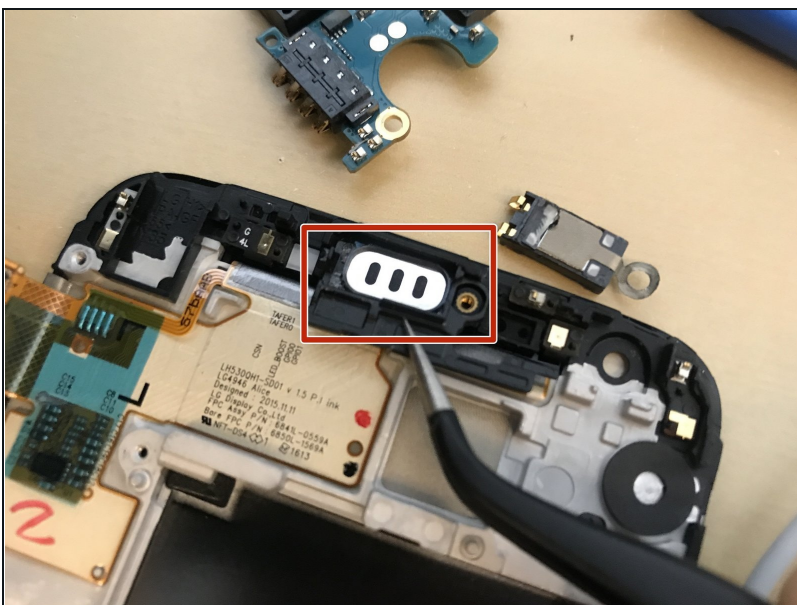
- Separate the motherboard of the phone from the screen of the phone

Step 10



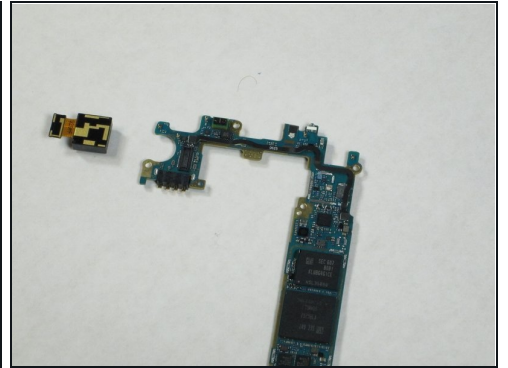
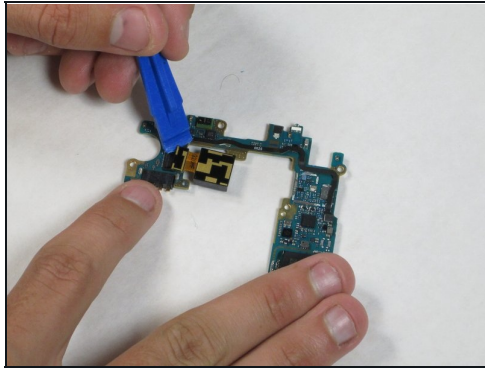
- Make sure to transfer the earpiece from the old screen to the new screen or else you wouldn't be able to hear anyone when you make phone calls!
- The component is fragile so don't try to force it to come out with a pair of [tweezers](#). A pick should be able to wedge it out.
- Be careful with the adhesive that's connected to it. It's easy to pull out.

Step 11



- Also remove the earpiece casing from the old screen by popping it out with a pair of tweezers.
- ☑ On the new screen, place the casing down first and making sure that it's locked in place. Then place the earpiece on top of it. Gently push it down with your finger until it's secure.

Step 12 — Camera Sensor



- Using the plastic opening tool, remove the ribbon attaching the sensor to the motherboard.

To reassemble your device, follow these instructions in reverse order.