



# MJS T2702 Battery Replacement

This guide will show you how to safely and easily replace your battery. Be sure to refer to our soldering guide before repairing this device. Be careful to not directly touch the solder iron.

Written By: Katalina Benecke

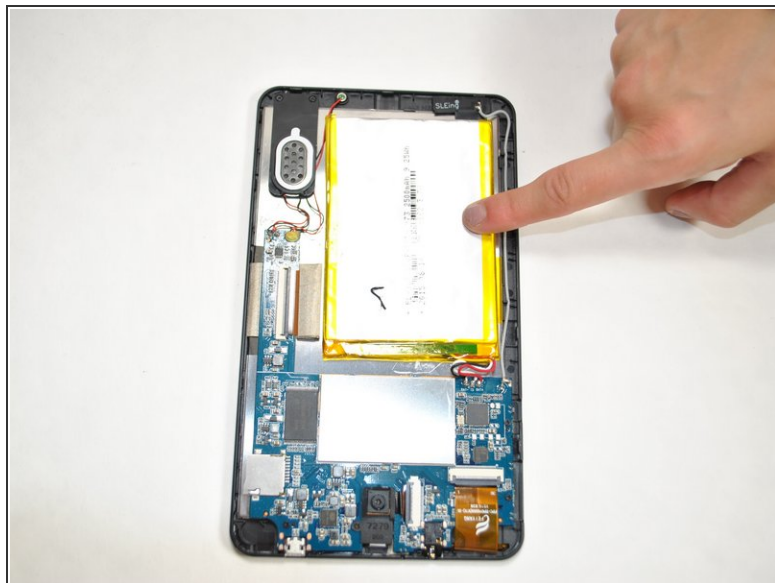




## TOOLS:

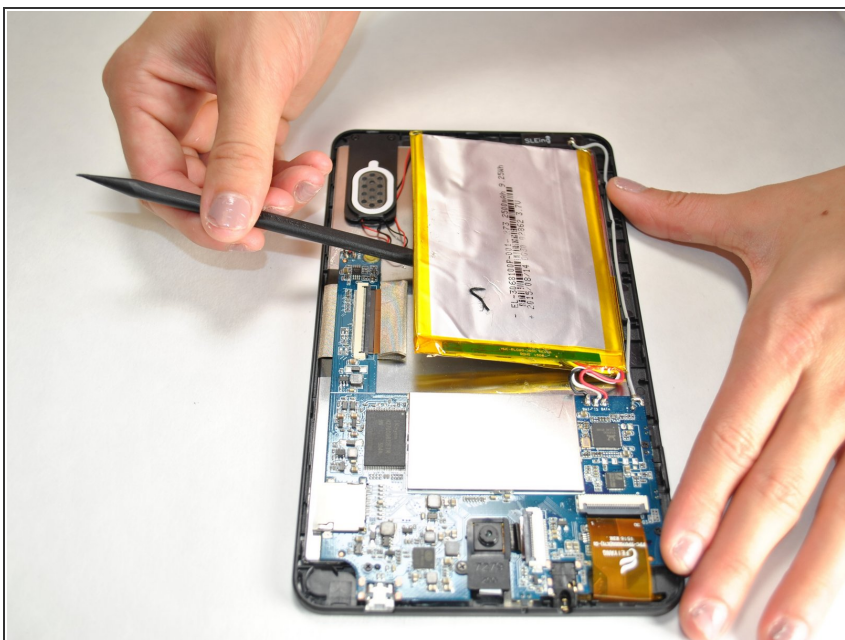
- [Soldering Iron](#) (1)
  - [Spudger](#) (1)
-

## Step 1 — Battery



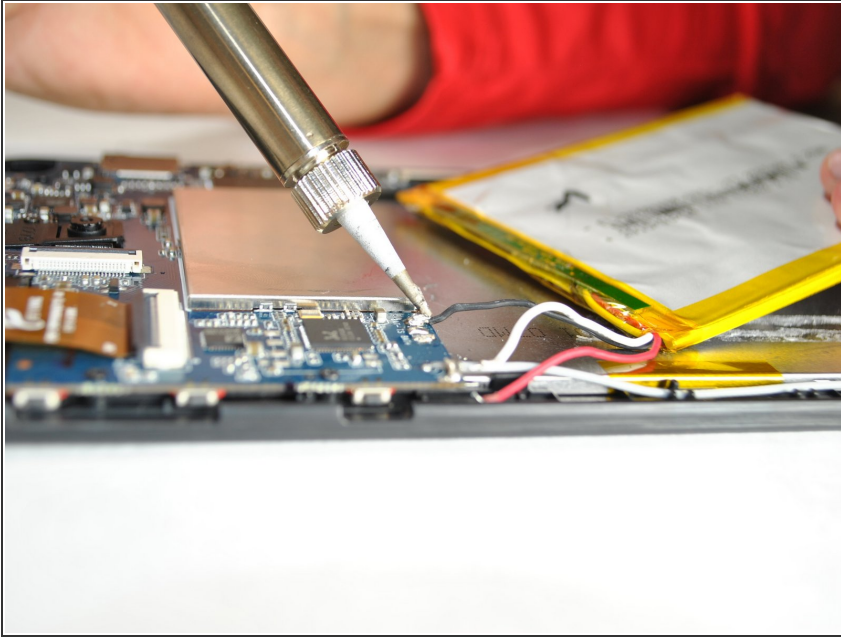
- Separate the back of the device from the face by inserting the flat end of the nylon spudger into the corner of the device to safely pry it open.

## Step 2



- Use the nylon spudger to gently pry out the battery.

## Step 3



- Solder the wires off that are on the battery. Use the [solder technique guide](#) for helpful tips!

To reassemble your device, follow these instructions in reverse order.