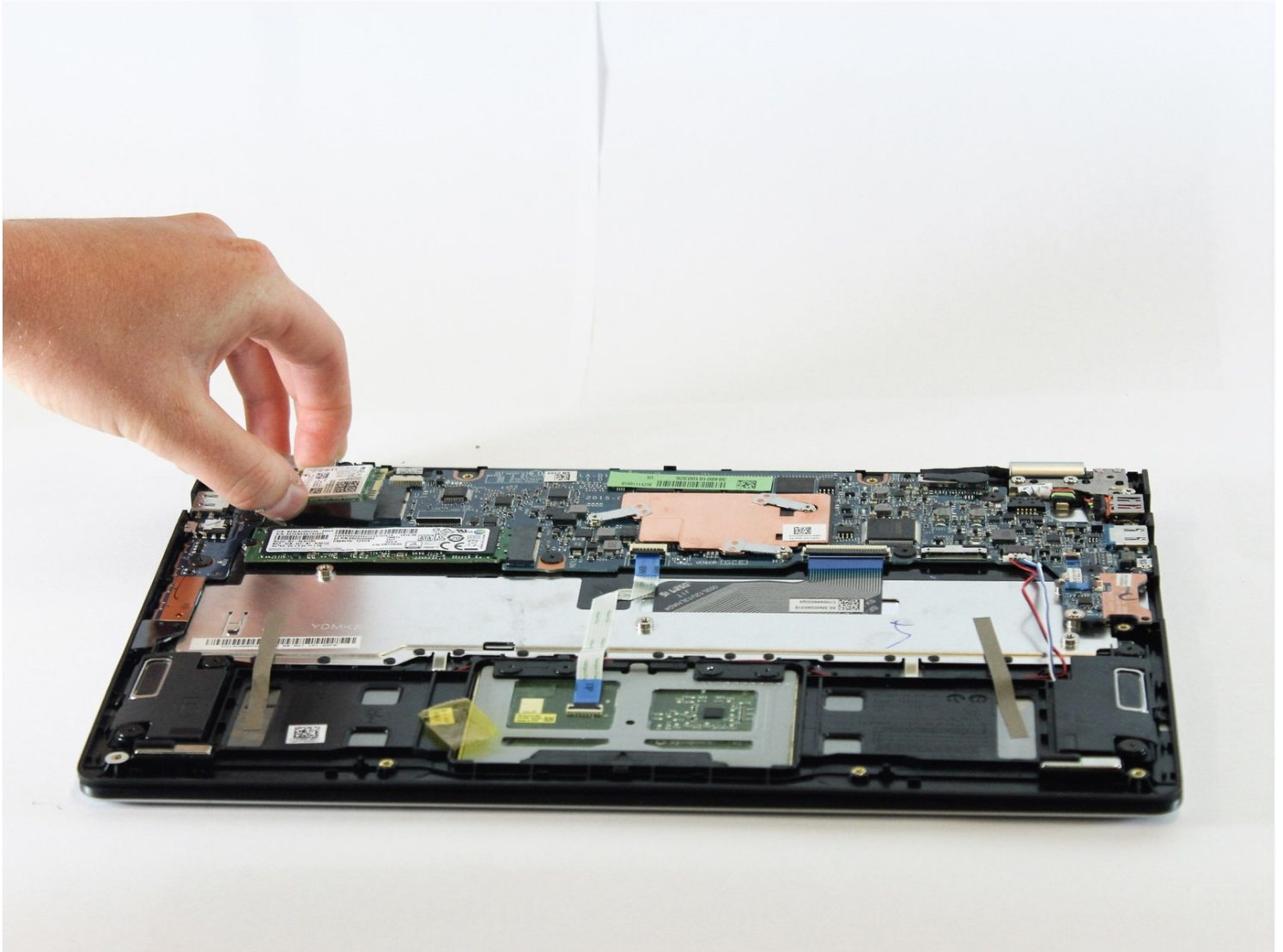




# Lenovo Yoga 700-11ISK Wireless Card Replacement

Is your laptop having wireless connectivity...

Written By: Gabrielle Bullen



# INTRODUCTION

Is your laptop having wireless connectivity issues? Your wireless card may be faulty. This guide walks you through the process of removing the wireless card so you can replace it and get back to surfing the web.

---

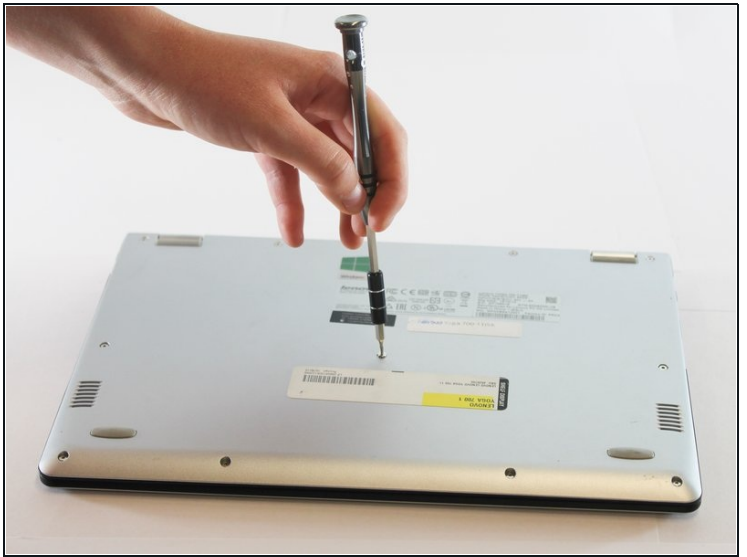
## TOOLS:

TR7 Torx Security Screwdriver (1)

Phillips #1 Screwdriver (1)

---

### Step 1 — Back Panel



- Flip your device so that the bottom panel is facing up.
- Remove the eleven 5mm Torx T5 screws from the back panel.

## Step 2



- Use a spudger to unclip clips on the front and near the USB ports on each side
- Lift the back panel off

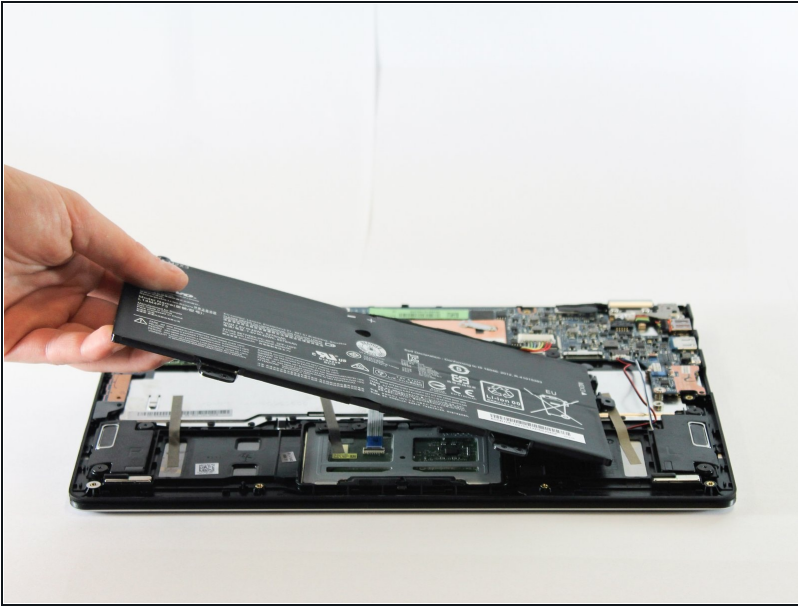
## Step 3 — Battery



- Remove the two 3mm Phillips #1 screws holding the battery to the laptop chassis.
- Disconnect the battery from the IO board by holding the connector by the sides and gently pulling the connector out.



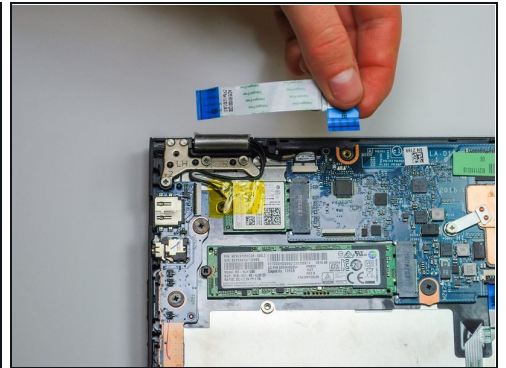
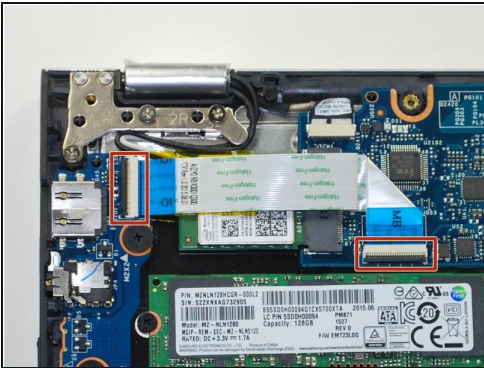
## Step 4



- Carefully remove the battery from the laptop.

⚠ Make sure that all wires still connected to the laptop are out of the way and not pulled out with the battery.

## Step 5 — Wireless Card



- Place the laptop with the LCD facing down so that the hinges face opposite you.
- Disconnect both ends of the two blue ZIF (zero insertion force) connectors in the upper left corner and by gently flipping the black tabs on the connector and pulling up and away from both ends of the connectors.

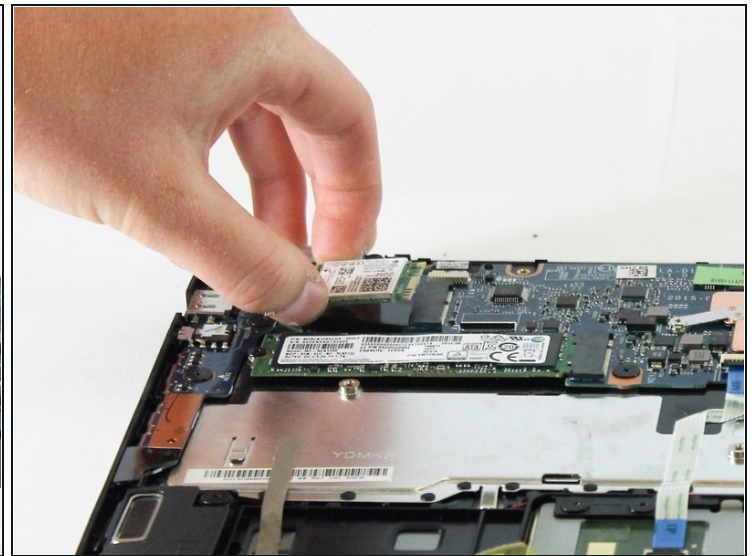
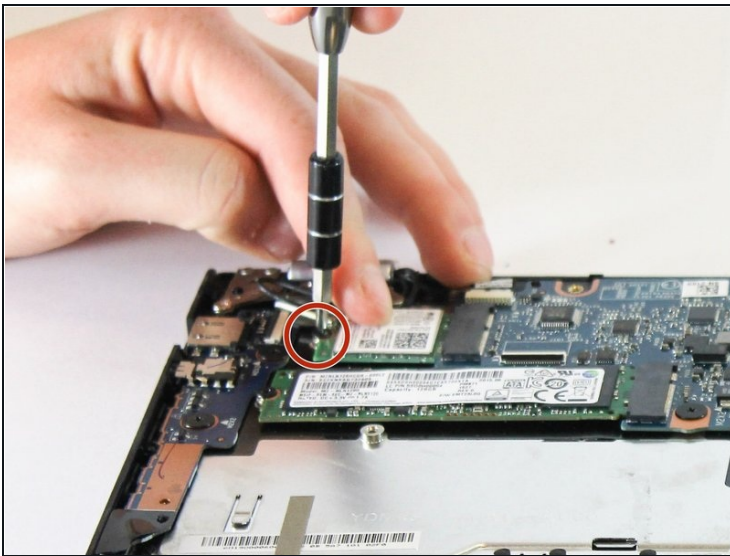
⚠ Do not pull on the blue tab of the cable without lifting up the black tabs on the connectors. The cable should slide in and out effortlessly. If there is resistance when pulling the cable, double check the black tabs.

## Step 6



- Unplug the black and white wireless LAN cables in the upper left corner by gently pulling upwards.
- ★ *To reinstall a wireless LAN card, note that the black cable goes to the MAIN jack, and the white to the AUX jack.*

## Step 7



- Remove the one 2mm Phillips #1 screw.
- Remove the card by pulling to the left and up.

To reassemble your device, follow these instructions in reverse order.