



Shark Rotator NV502 Roller Brush Replacement

Replacing the roller brush on the Shark Navigator NV502

Written By: Samuel



INTRODUCTION

When the vacuum is failing to pick up dirt or spitting it back out, check the roller brush for damage. Multiple missing or broken bristles as well as a broken or cracked brush can fail to pick up dirt .



TOOLS:

- [Metal Spudger](#) (1)
- [Phillips #2 Screwdriver](#) (1)



PARTS:

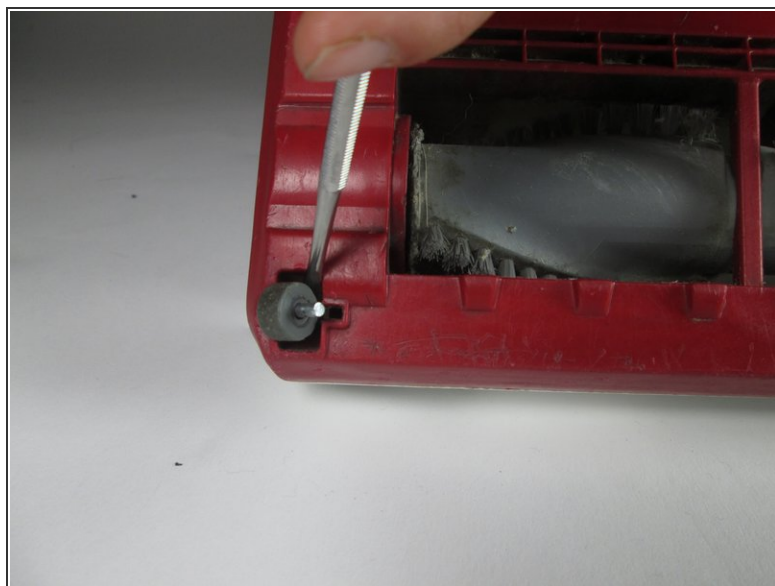
- [Shark Rotator NV502 Roller Brush](#) (1)

Step 1 — Roller Brush



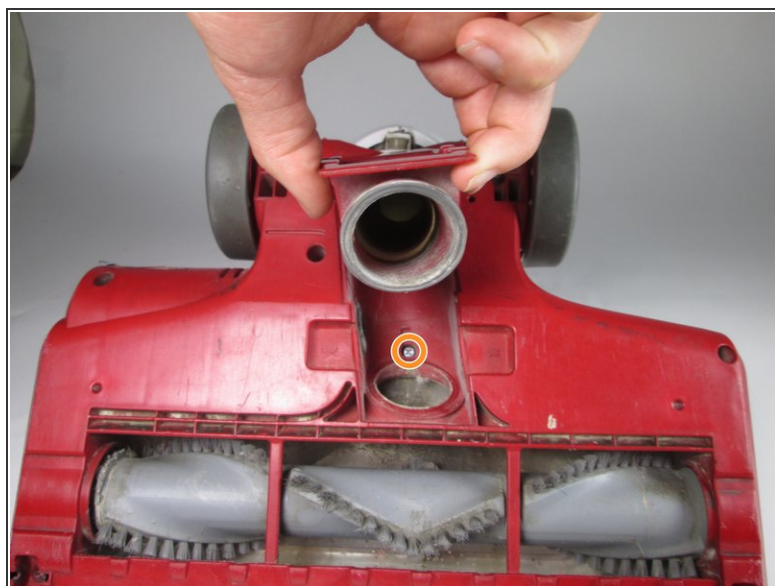
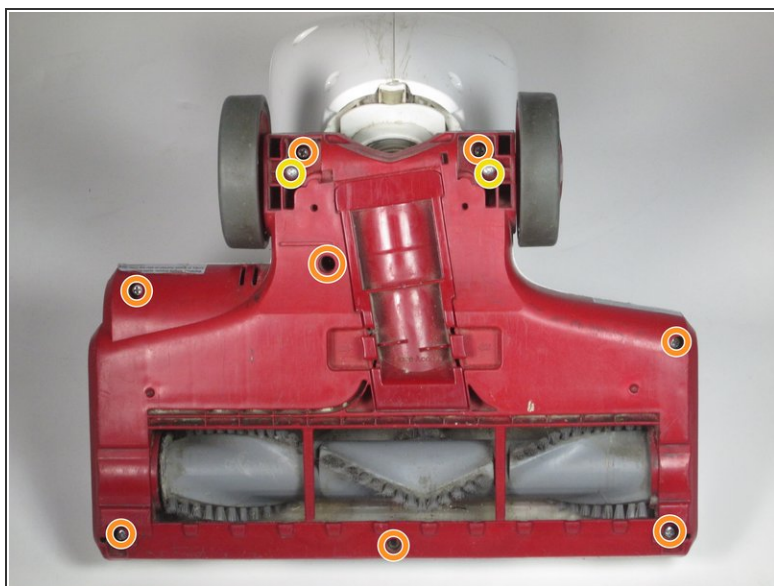
- Pull the handle while pressing the lift away button to remove the body of the vacuum.

Step 2



- Flip the base of the vacuum over to access the bottom.
- Remove the two small wheels with a metal spudger.

Step 3



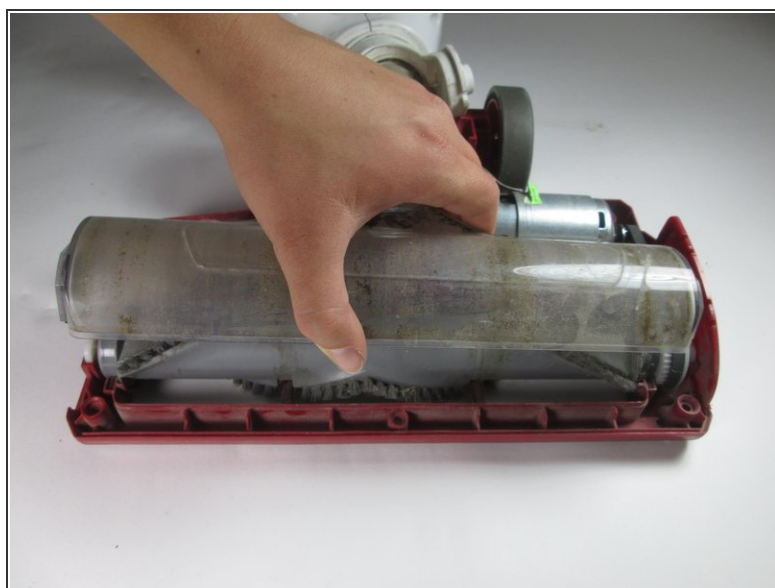
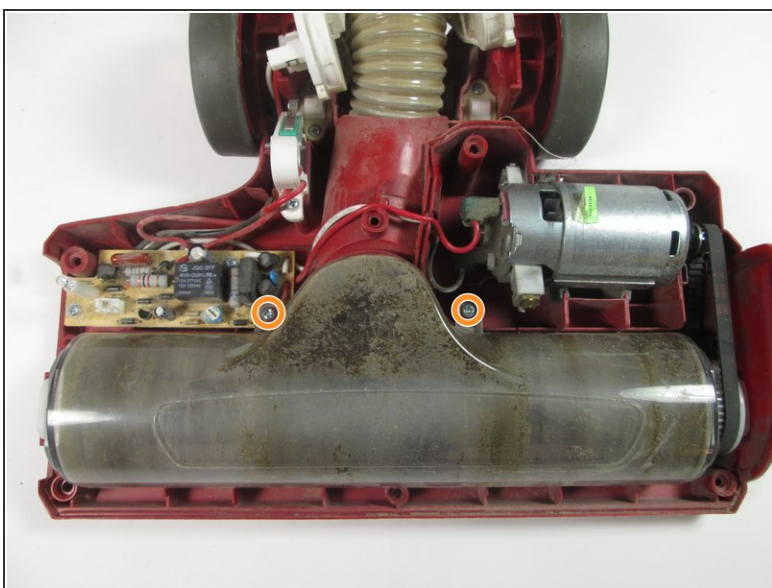
- Remove the nine 16 mm screws using the Phillips #2 Screwdriver. Press on the side tabs in the middle of the panel and pull up to reveal the screw under the hose connection.
- Remove the two 13.5 mm screws using the Phillips #2 Screwdriver.

Step 4



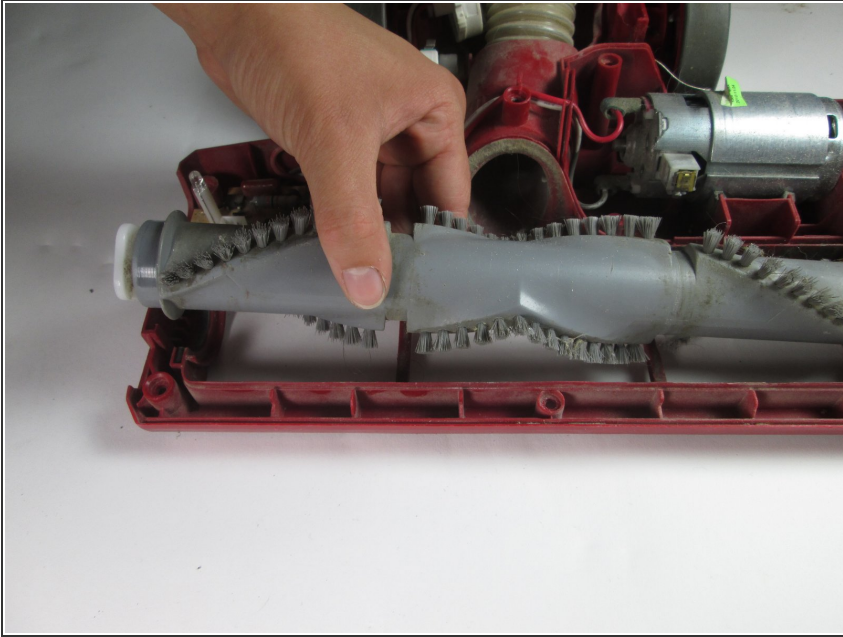
- Pull up on the cover and move it to the side.
- Remove the wire attached to the base by squeezing the pin and pulling up.

Step 5



- Remove the two 11 mm screws using the Phillips #2 screwdriver.
- Lift the roller brush cover up.

Step 6



- Pull out the roller brush.

To reassemble your device, follow these instructions in reverse order.