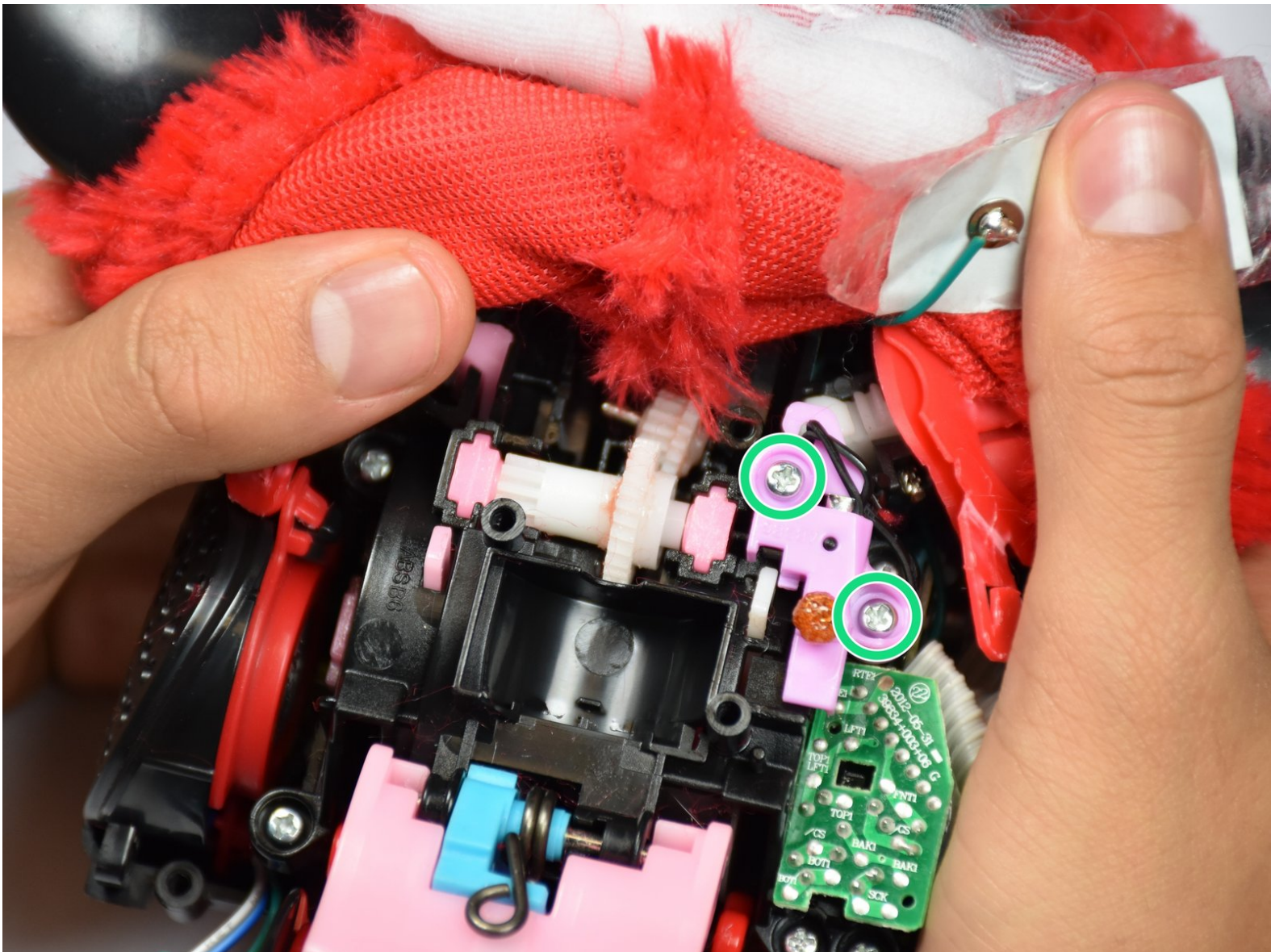




# Hasbro Furby 2012 Switch Replacement

Replace the switch within Furby's back panel.

Written By: Jordan Castillo



---

## INTRODUCTION

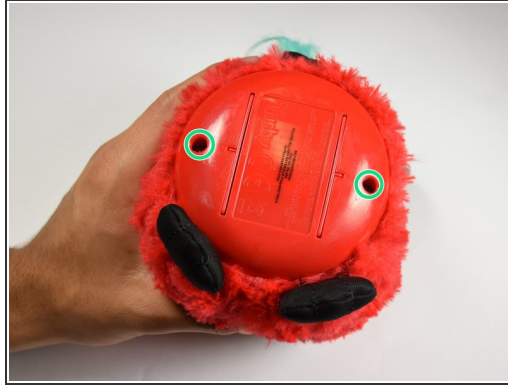
This guide will show you how to replace the switch required for the back panel to be removed. The hardest part of this guide is removing the clips holding the fur on the back panel in place.

---

### TOOLS:

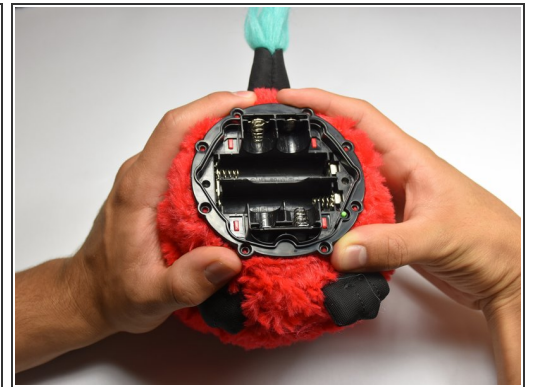
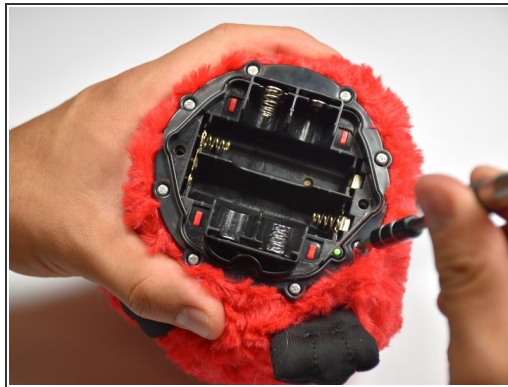
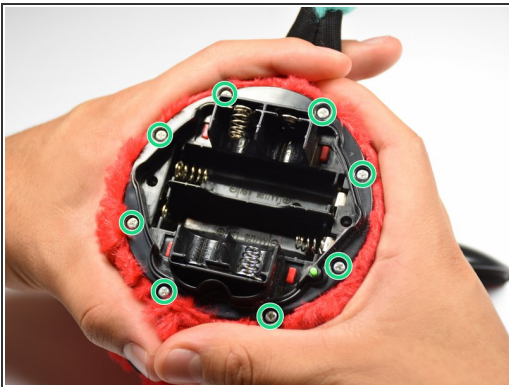
- [Phillips #0 Screwdriver](#) (1)
  - [Flathead 3/32" or 2.5 mm Screwdriver](#) (1)
  - [1.0 mm Flathead Screwdriver](#) (1)
  - [Tweezers](#) (1)
-

## Step 1 — Outer Shell



- Use a flathead screwdriver to remove the two 10mm screws on the base of the Furby.

## Step 2

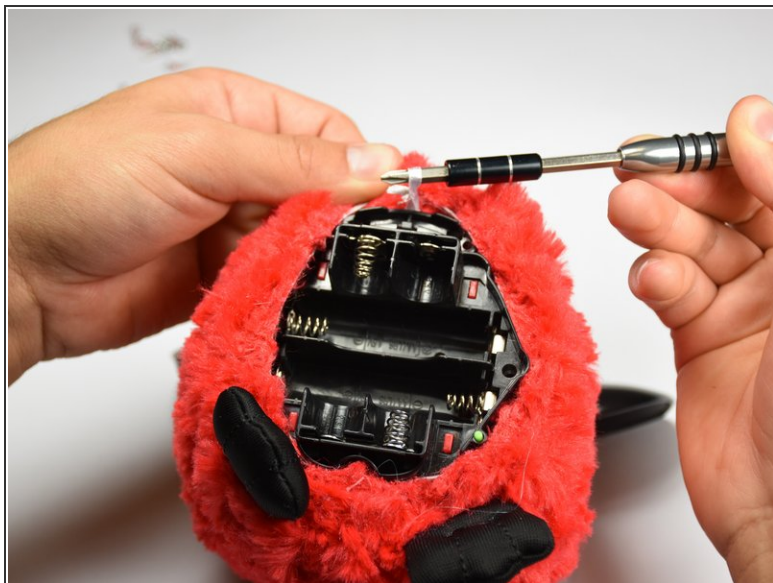
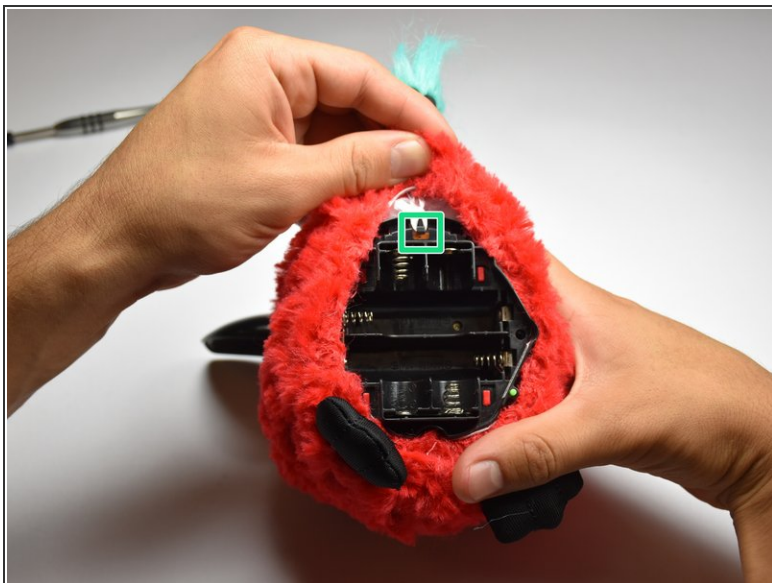


- Use a Phillips #0 driver to unscrew the eight 10mm screws.
- Remove the base ring after unscrewing all the screws.

⚠ Be careful when lifting the base ring from the Furby. There are sharp edges that hold the base ring in place.

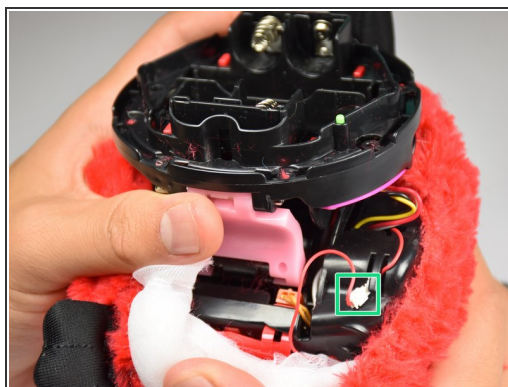
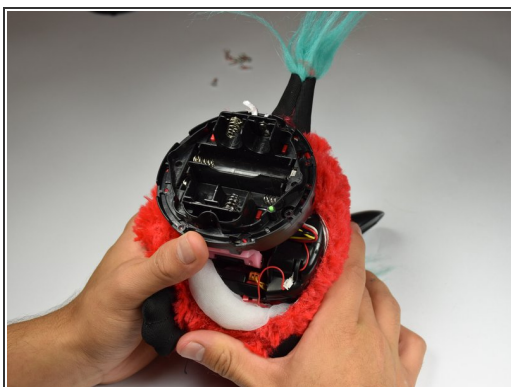


### Step 3



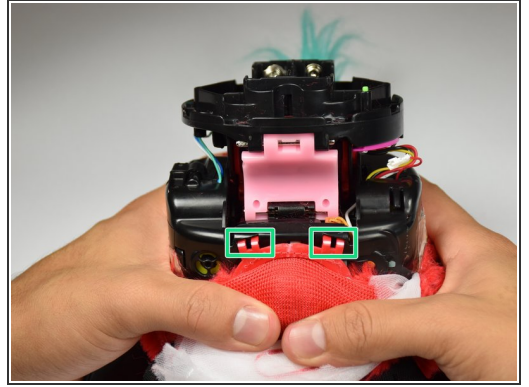
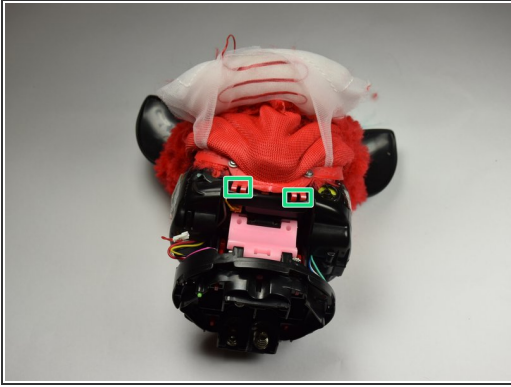
- Unhook the white ribbon from the tab on the base.

### Step 4



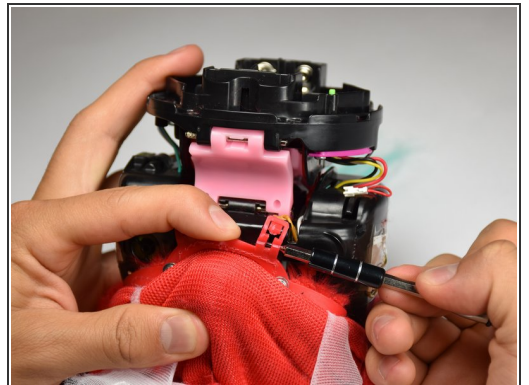
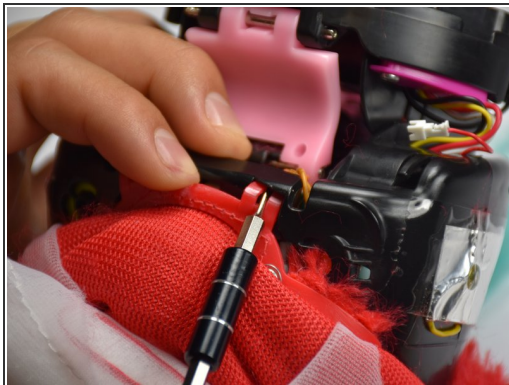
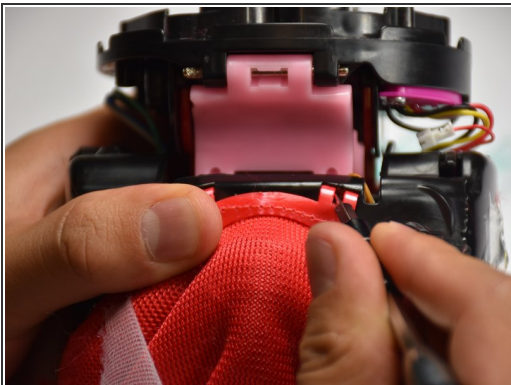
- Roll the Furby's fur downward.
- Disconnect the now exposed red wire.

## Step 5



- Locate the two middle clips first.
- Locate the two remaining clips on Furby's sides, they are opposite each other.
- Orient the Furby upside down with the tail facing away from you.

## Step 6



- Insert a metal prying tool directly into the clip opening.
- Press upward into the clip. At the same time, use your other hand to pull away the plastic seam from the Furby's body.
- Repeat the previous step to remove the remaining three clips.



## Step 7



- Locate the two 10mm screws and remove them with the Phillips #0 head screwdriver.
- Lift up on the fur covering until the face of the Furby is exposed.

## Step 8



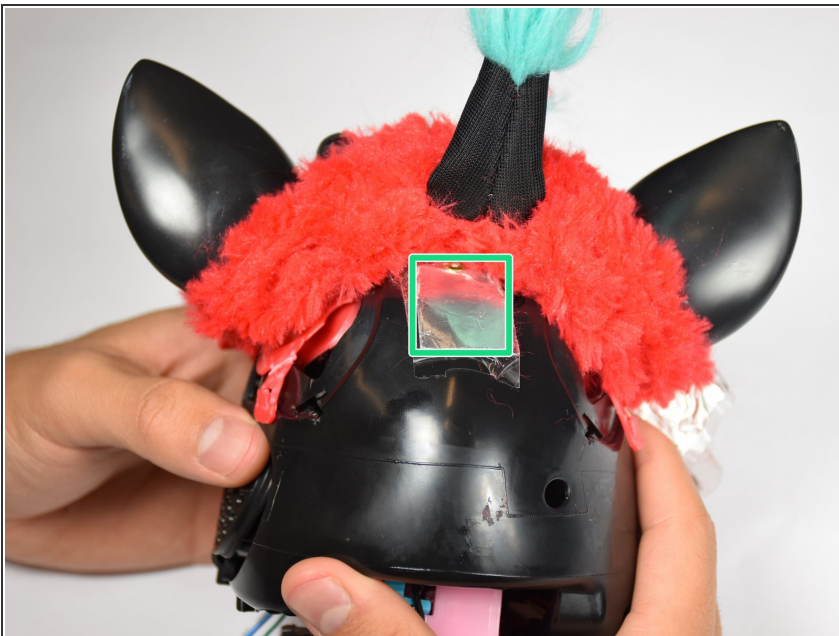
- Orient the Furby on its side to where the beak is facing left and locate the edge of the aluminum tape.
  - Lift tape gently and peel back until the tape is nearly removed.
- ⚠ Do not pull on the yellow wire located on the opposite end of the tape.

## Step 9



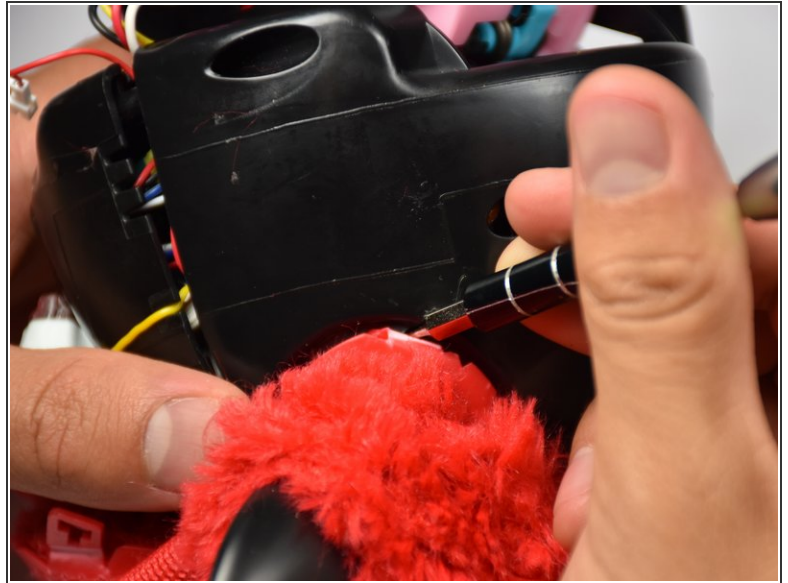
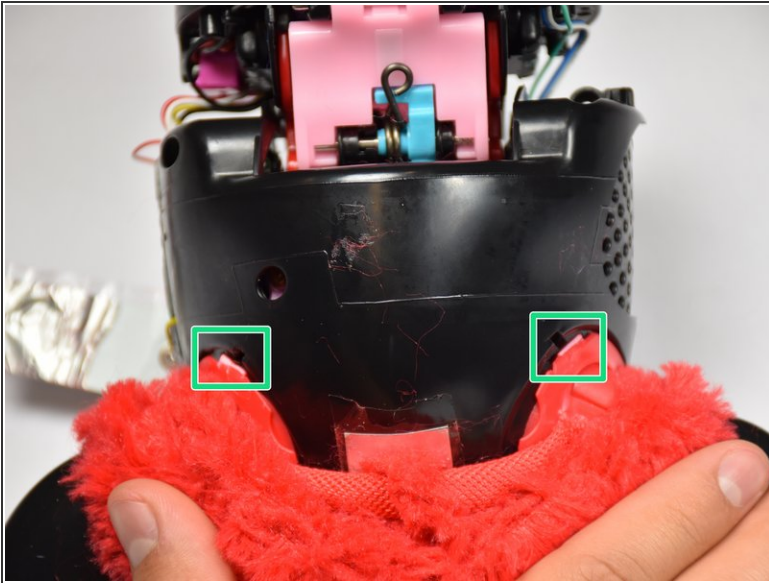
- Locate the four 10mm screws. Two on either side of body, and two on top of back plate, around the tape.
- Remove the 10mm screws with the Phillips#0 screwdriver.

## Step 10



- Peel the tape gently, grabbing it from the bottom edge and folding the tape upward.
- ⓘ Peel the tape up until it is nearly detached from the black case.

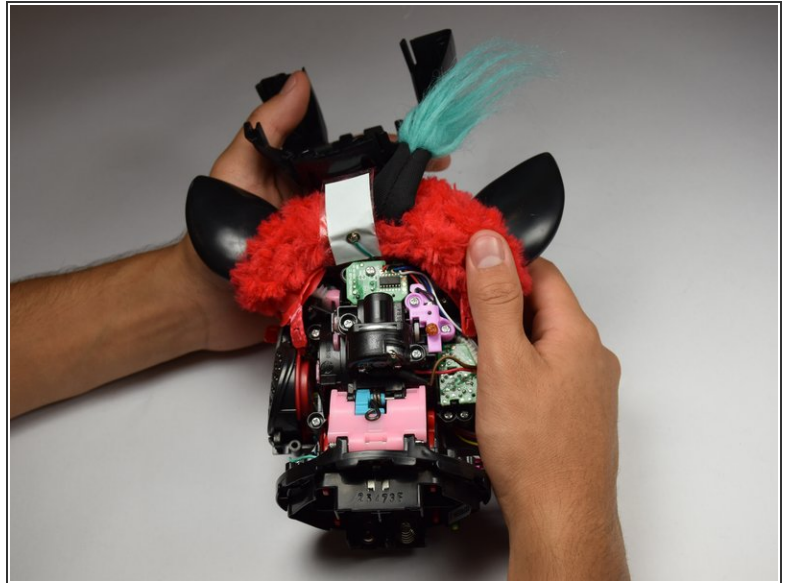
## Step 11



- Orient the Furby face down, with the base facing away from you.
- Locate the clips below the ears.
- Repeat the technique used in Step 6. Create leverage using a metal prying tool to press upward into the clip, while also pulling back on the clip itself.

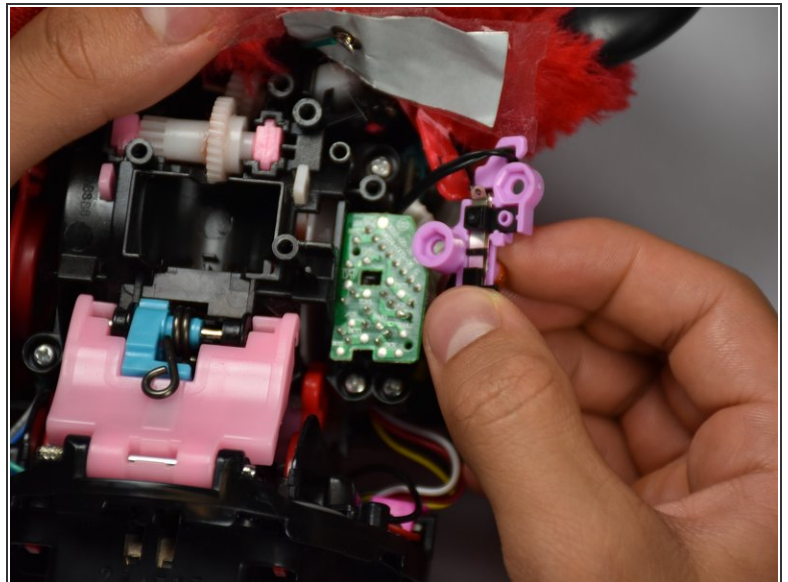
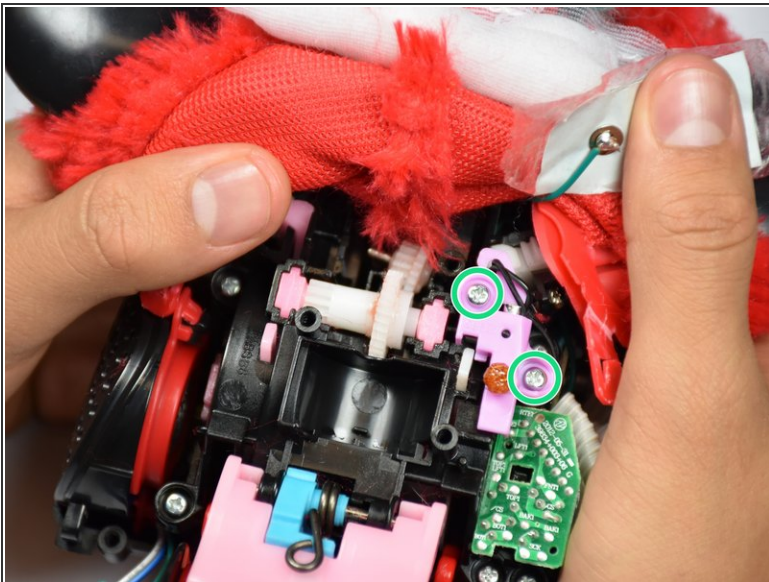


## Step 12



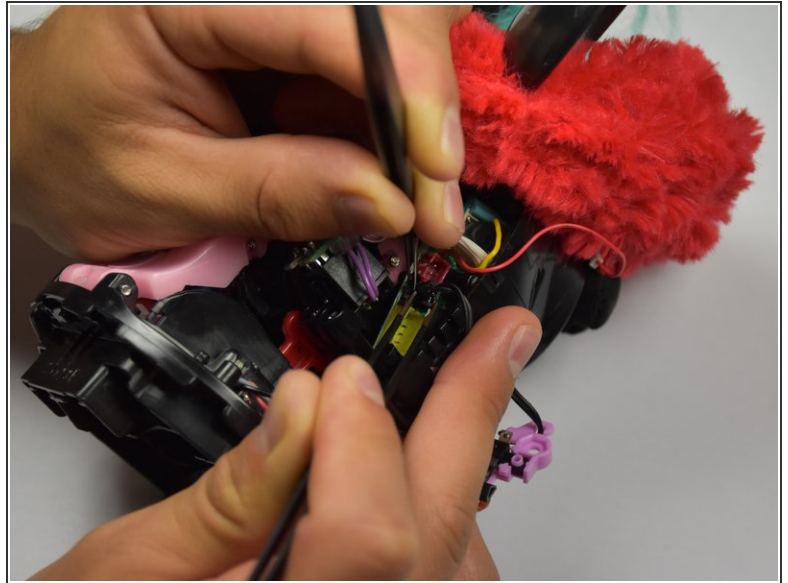
- Remove the loose, plastic back panel by pulling the panel away from Furby's body.

## Step 13 — Switch



- Locate and remove the two screws holding in the switch using J0 Phillips Head Screw Driver.

## Step 14



- Orient the Furby with the beak facing right.
- Using the blunt and pointed tweezers, remove the black connector.
- Insert the new switch in place of where the previous connector was located.

To reassemble your device, follow these instructions in reverse order.