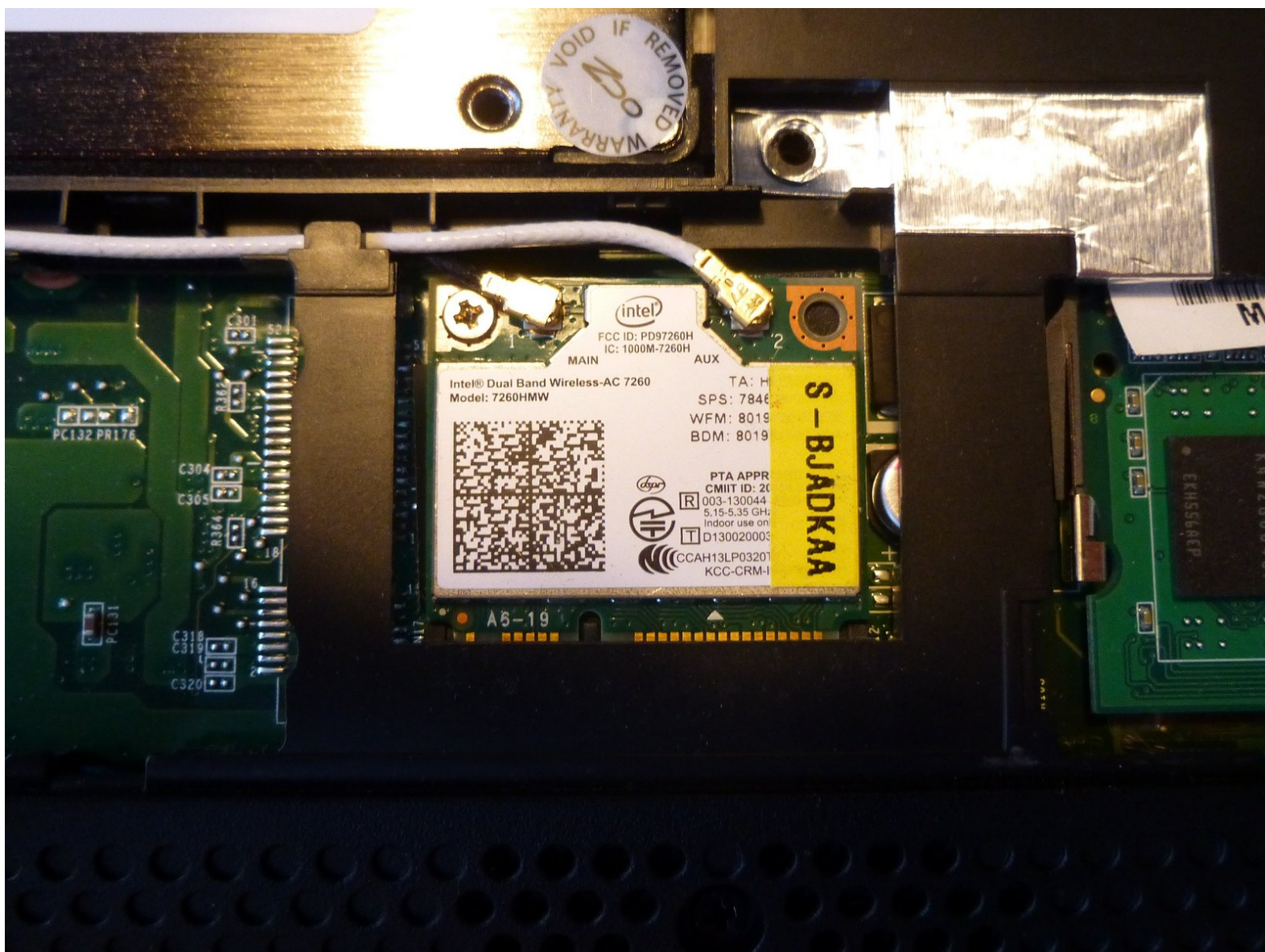




Acer Aspire One D257 Wireless card Replacement

Described how to remove the Wireless card from the netbook.

Written By: Claes



INTRODUCTION

Describes how to remove the Wireless card from the netbook.



TOOLS:

- [Phillips #1 Screwdriver](#) (1)
 - [Spudger](#) (1)
 - [Metal Spudger](#) (1)
 - [Jimmy](#) (1)
-

Step 1 — Battery



- Put the netbook, so the back side is upwards.

Step 2



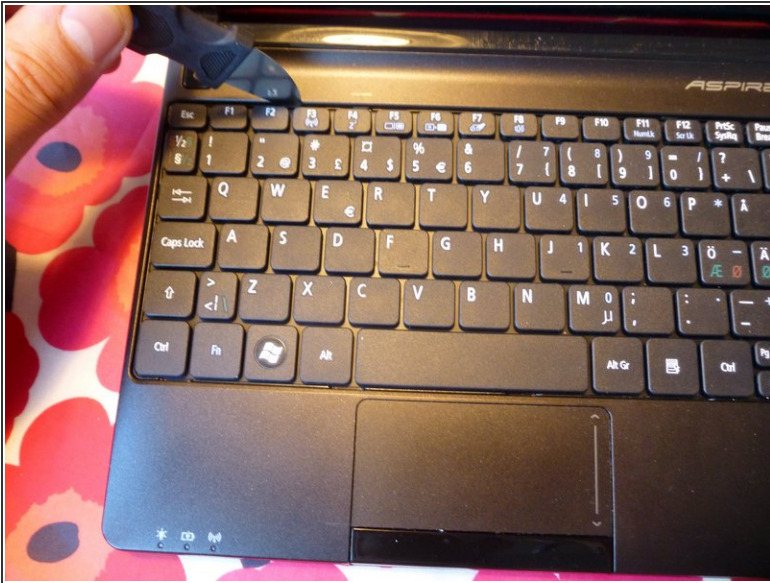
- Push the right lock to the right so the red filed is visible on the left.

Step 3



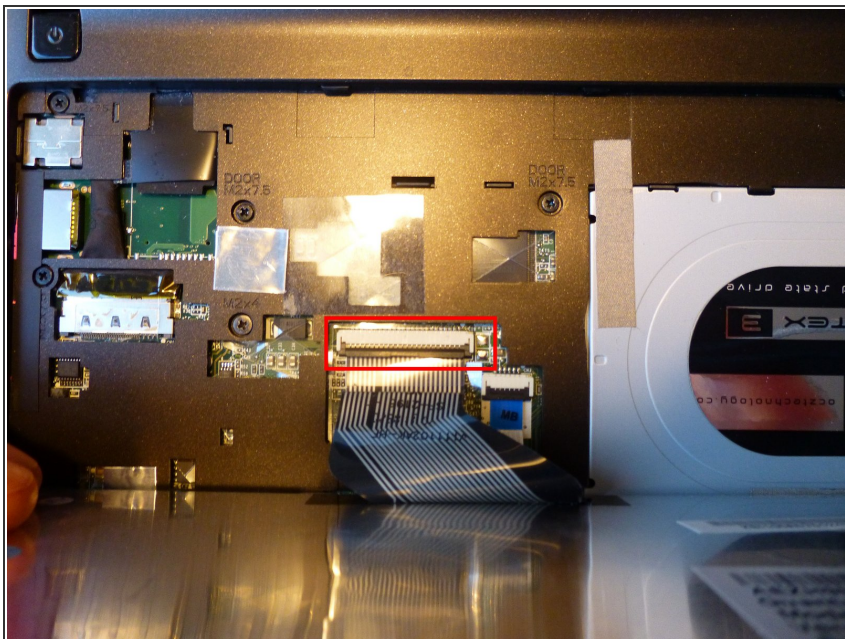
- Now move the left lock which is spring loaded to the left and keep it there. Then with the other hand remove the battery by pulling down.
- When reassembling the new battery push it up into the netbook and do lock the right by moving it to the left so the red field disappears.

Step 4 — Keyboard



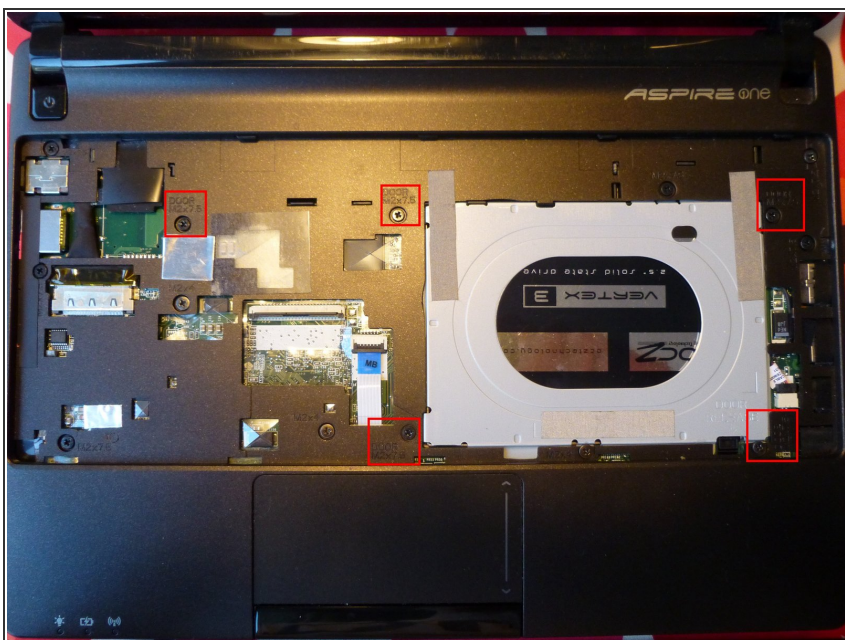
- Open the lid of the netbook. Use the Jimmy from the upper left corner of the keyboard. Put it between the keyboard and the casing and move it to the right. It might help to use a metal spudger to push in the pins holding the keyboard in place.
- Then move down along the sides where there is one pin on each side. After that twist the keyboard towards you.

Step 5



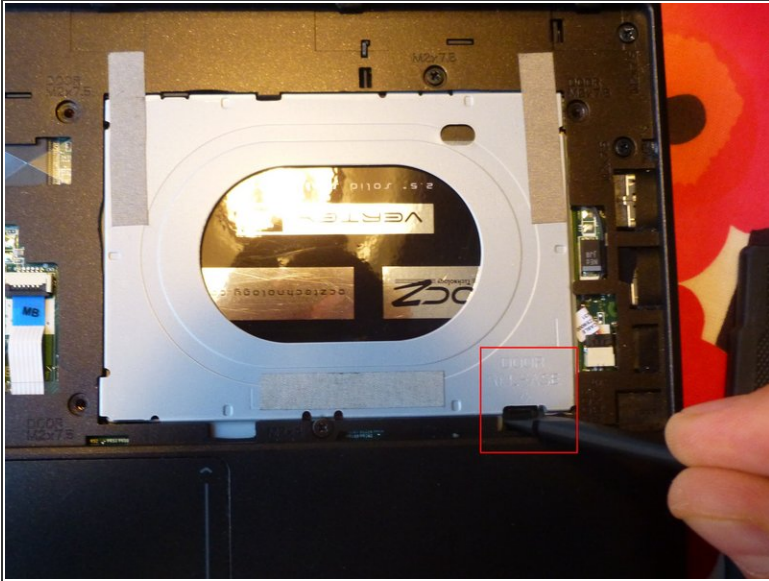
- Now open the brown connector so the flat cable is loose. Then you can remove the keyboard.

Step 6 — Acer Aspire One D257 opening the hatch



- Remove the 5 screws marked with "Door".

Step 7



- Use a spudger or flat screwdriver to push down the hatch where it is marked "Door release".
- Now you can carefully remove the hatch.
- When reassembling the hatch look that the noses are aimed at the appropriate holes in the case, then you can press down the rest of the hatch onto the netbook.

Step 8 — Wireless card



- Turn around the netbook so we look on the bottom.

Step 9



- With an anti static spudger carefully remove the antenna cables from the connection on the WiFi-card.
- Remove the screw to then lift the card from the socket.
- Now you can install a new or better WiFi-card. I have installed a Dualband AC card from Intel into my netbook, the AC 7260.

To reassemble your device, follow these instructions in reverse order.