



# Nintendo 3DS 2015 D Pad Replacement

If you aren't getting full range of motion on...

Written By: Tyler Starr



# INTRODUCTION

If you aren't getting full range of motion on the D pad replacing may fix it. Go slow. There are several delicate ribbons cables. Make sure that components are completely disconnected before you pull them apart.

---

## TOOLS:

[Phillips #0 Screwdriver](#) (1)

[iFixit Opening Tool](#) (1)

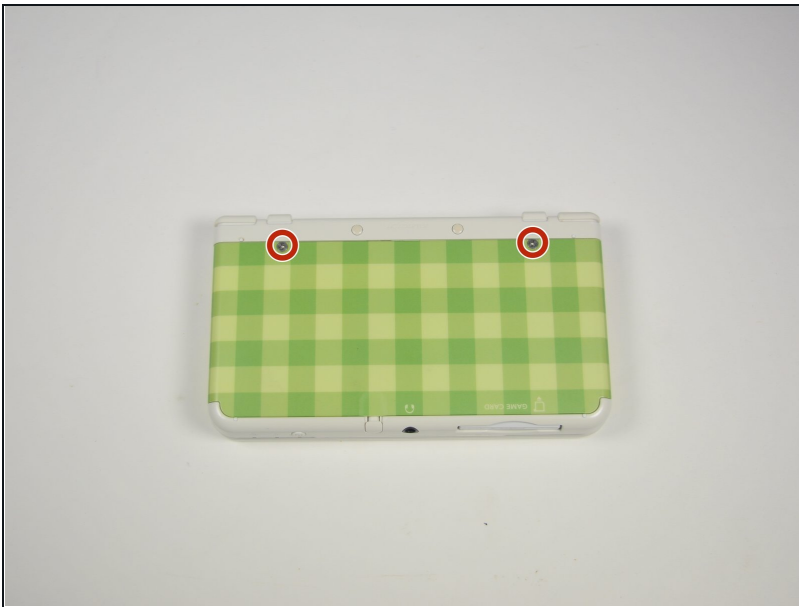
[Tri-point Y0 Screwdriver](#) (1)

[Phillips #00 Screwdriver](#) (1)


[Tweezers](#) (1)


---

## Step 1 — Battery

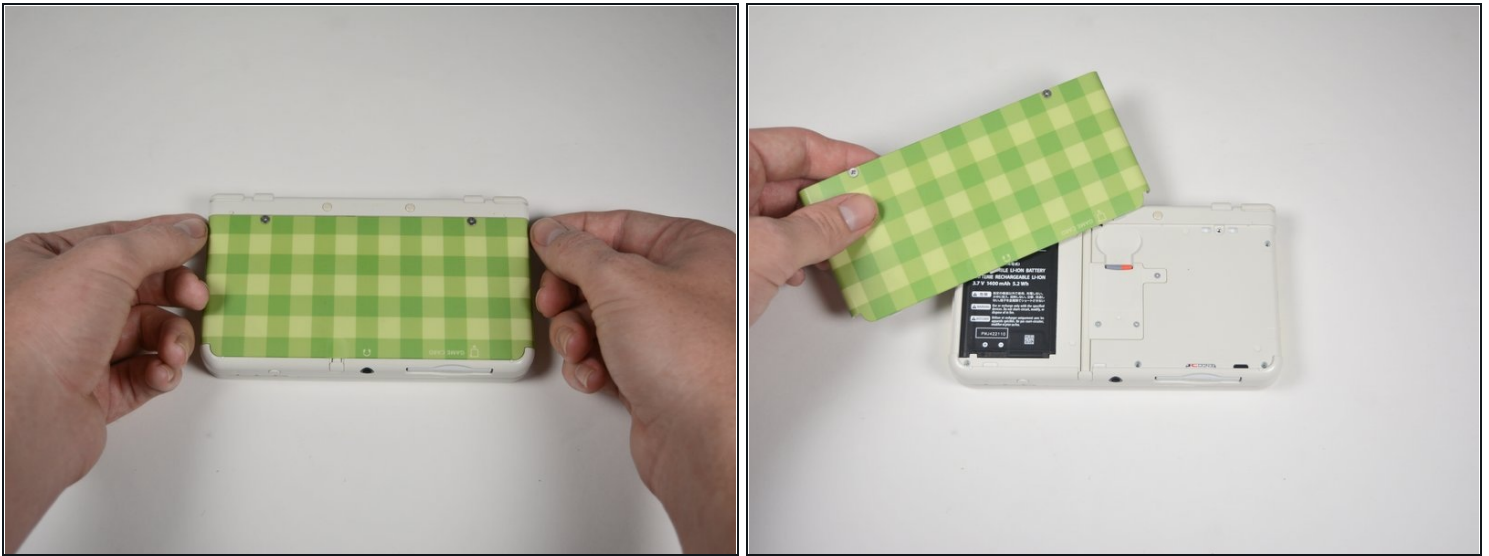


- Unscrew the two 3mm Phillips #0 head screws along the top edge of the device.

 **The screws on the back panel strip easily. Go slowly and press down firmly.**

 The screws on the back panel are held in by locking washers, so they won't come out of the back panel.

## Step 2



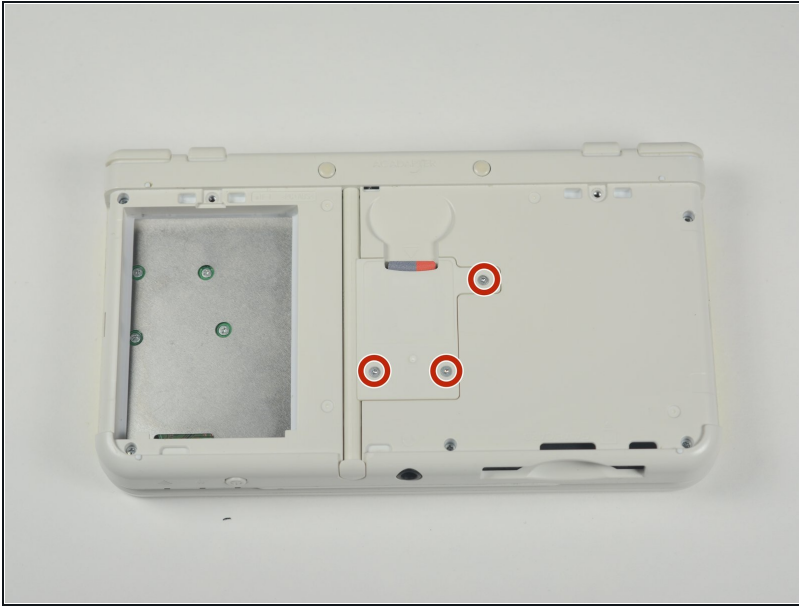
- Pull the top corner tabs of the front face plate outward and towards you.
- Pull the faceplate up and out of the slots at the bottom of the device.
- Set aside the back faceplate.

## Step 3



- Insert a plastic opening tool into the notch at the top of the battery.
- Pry the battery up with the plastic opening tool.

## Step 4 — SD Card Reader



- Unscrew the three 3mm Y0 screws along the right and bottom of the SD card reader.
- ⓘ The bottom of the SD card reader should slightly pop out after removing the screws.

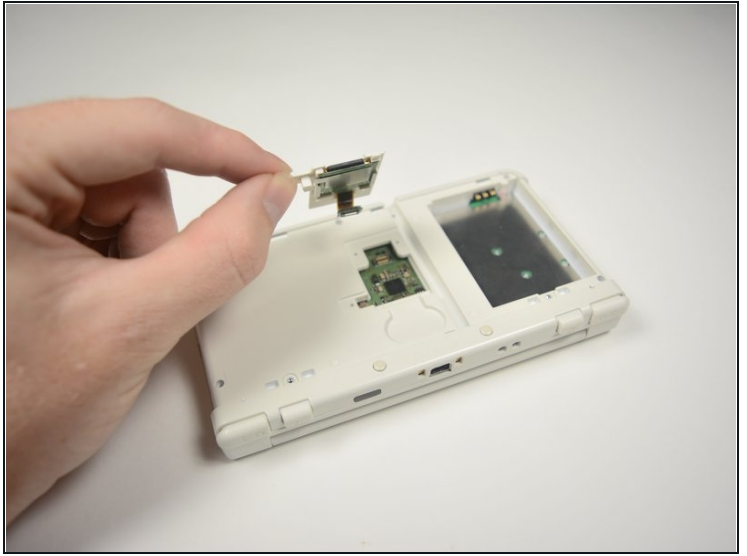
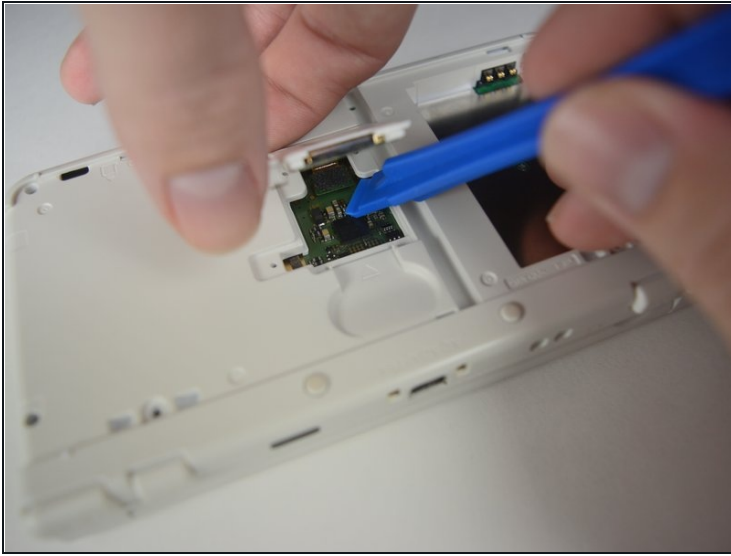
## Step 5



- Pull the SD card reader from the edge with two holes gently to free the tab at the top of the SD card reader.
- ⚠ Don't completely pull the SD card out of the device yet. There is a ribbon cable connected under the SD card reader.
- Reorient the device so that the power jack faces you.

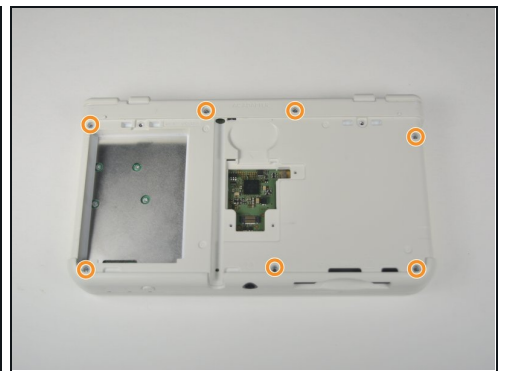
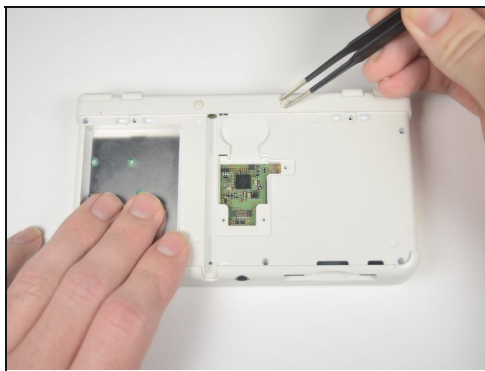
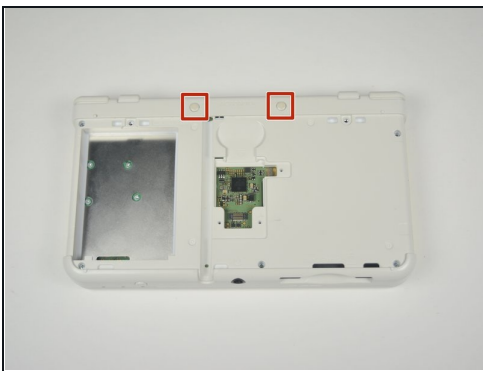


## Step 6



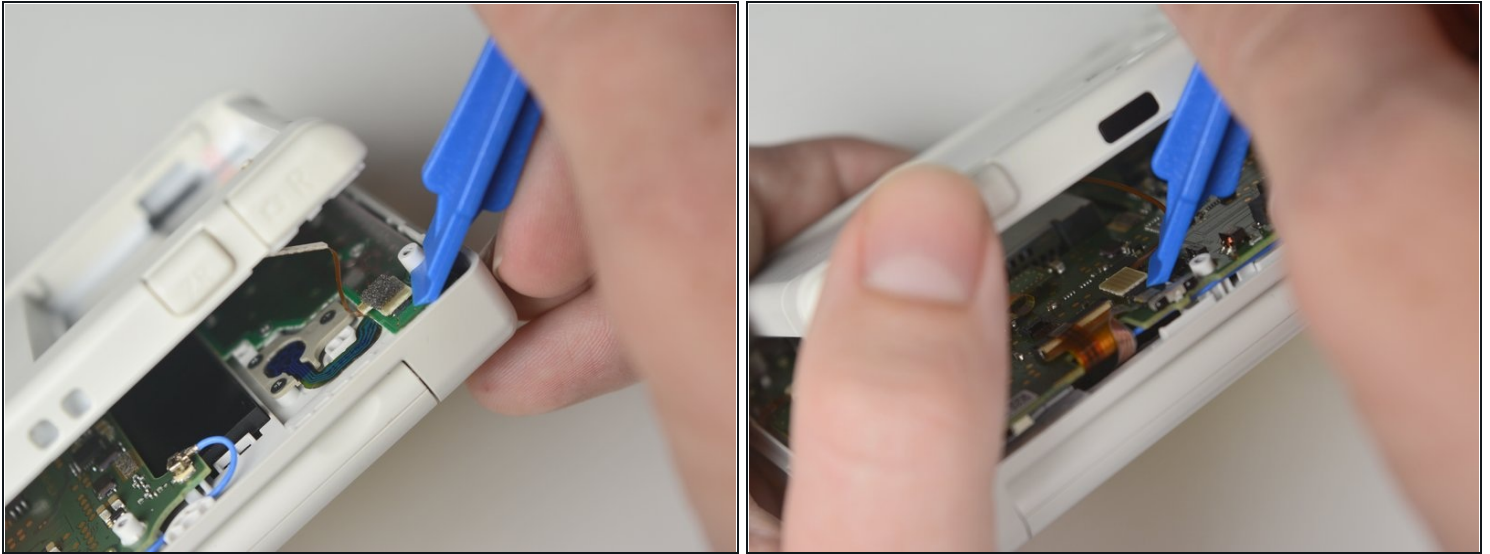
- Lift the SD card reader gently.
- Use a plastic opening tool to pry the SD card ribbon cable off the socket on the motherboard.
- Lift the SD card reader out off of the lower casing.

## Step 7 — Lower Case



- Reorient the device so that the game slot now faces you.
- Remove the two rubber bumpers along the top of the device using [tweezers](#).
- Unscrew the seven 6mm Phillips #00 screws along the top and bottom of the 3DS.

## Step 8

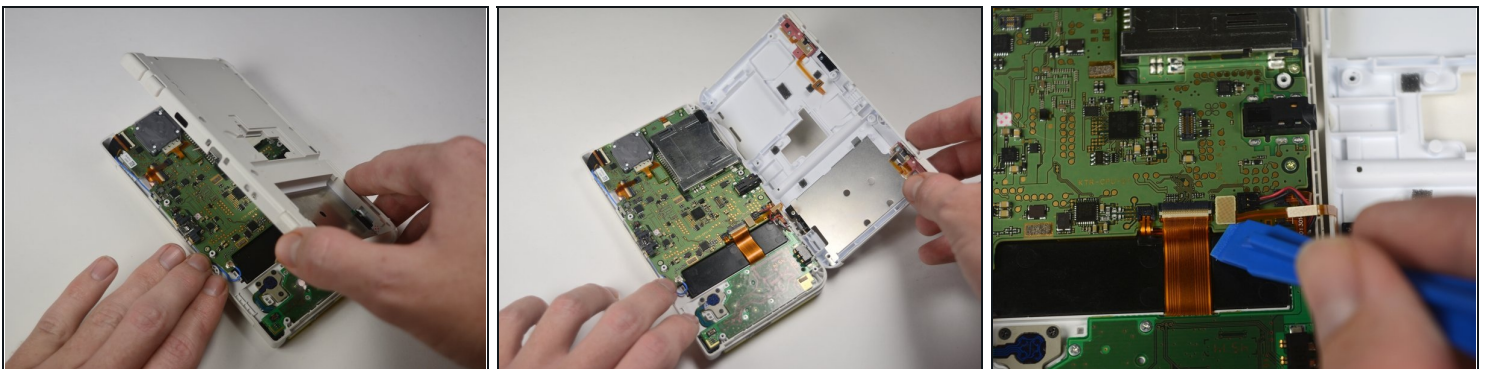


- Lift the top edge of the lower case slightly off on the 3DS.

⚠ Don't pull the lower casing completely off, you may break those connections. There are ribbon cables that must be disconnected first.

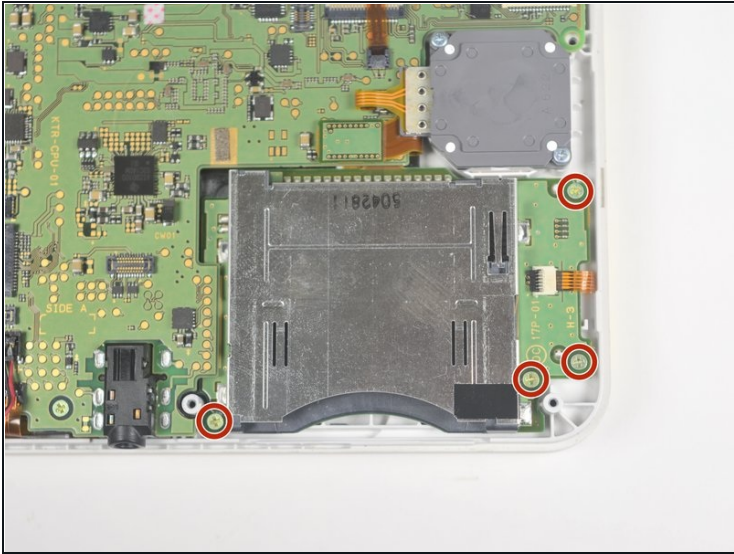
- Pry the ribbon cable socket under the right trigger using a plastic opening tool.
- Pry the ribbon cable socket under the infrared receiver cover using a plastic opening tool.

## Step 9



- Open the device slowly from its top edge. Be careful not to tug the ribbon cable connected near the bottom edge of the device.
- Pry the last ribbon cable attached to the lower case using a plastic opening tool.

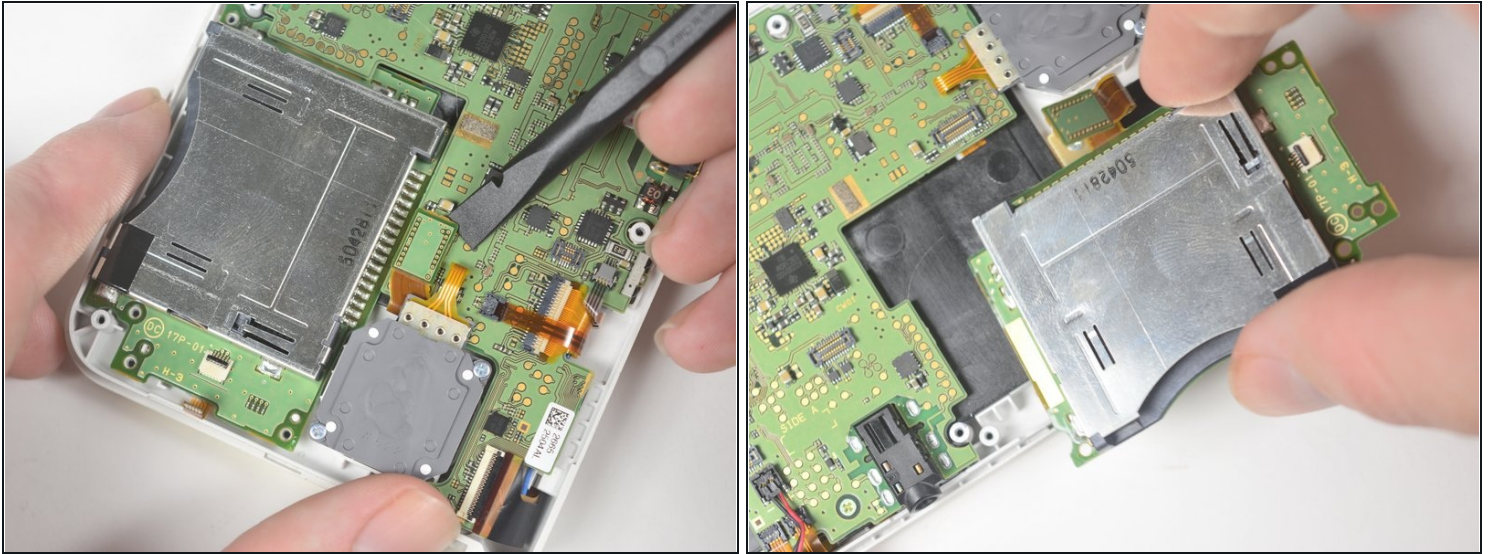
## Step 10 — Gamecard Reader



- Locate the gamecard reader near the bottom right corner of the motherboard.
- Unscrew the four 3mm Phillips #00 screws along the edge of the gamecard reader.
- Lift the black latch on the ZIF connector along the right side of the reader using a plastic opening tool.

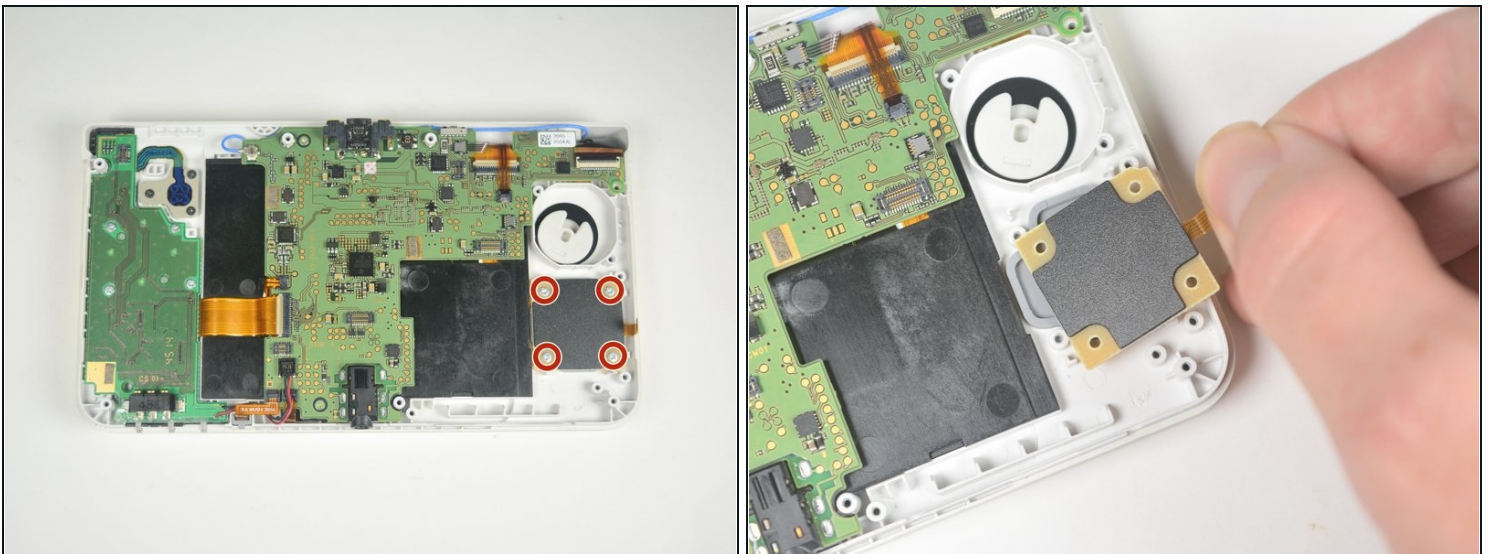


## Step 11



- Pry the ribbon cable from its socket, just left of the joystick, using the flat side of a spudger.
- Grab the right edge of the gamecard reader and lift it out of the device, watching to make sure the ribbon cables don't snag.

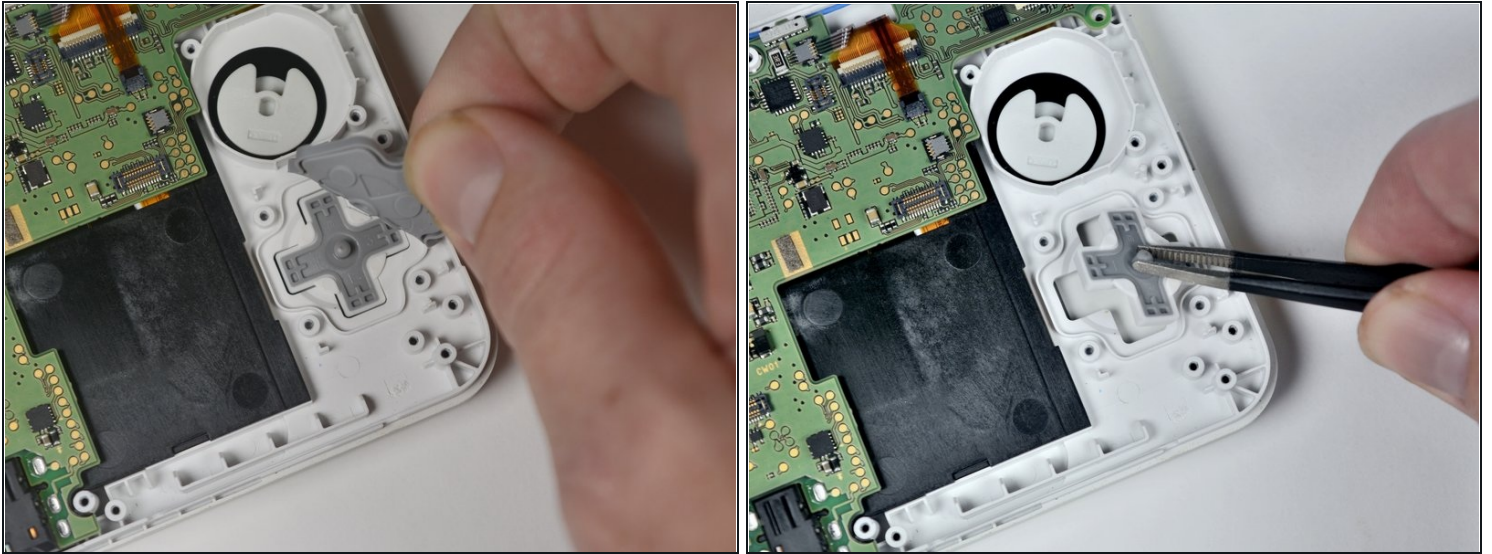
## Step 12 — D Pad



- Remove the four 3mm Phillips #00 screws from the four corners of the D pad board.
- Lift the D pad board out of the device.



## Step 13



- Peel the rubber piece, backing the D pad, out of the device.
  - Lift the D pad out of the device with a pair of [tweezers](#).
- 

To reassemble your device, follow these instructions in reverse order.