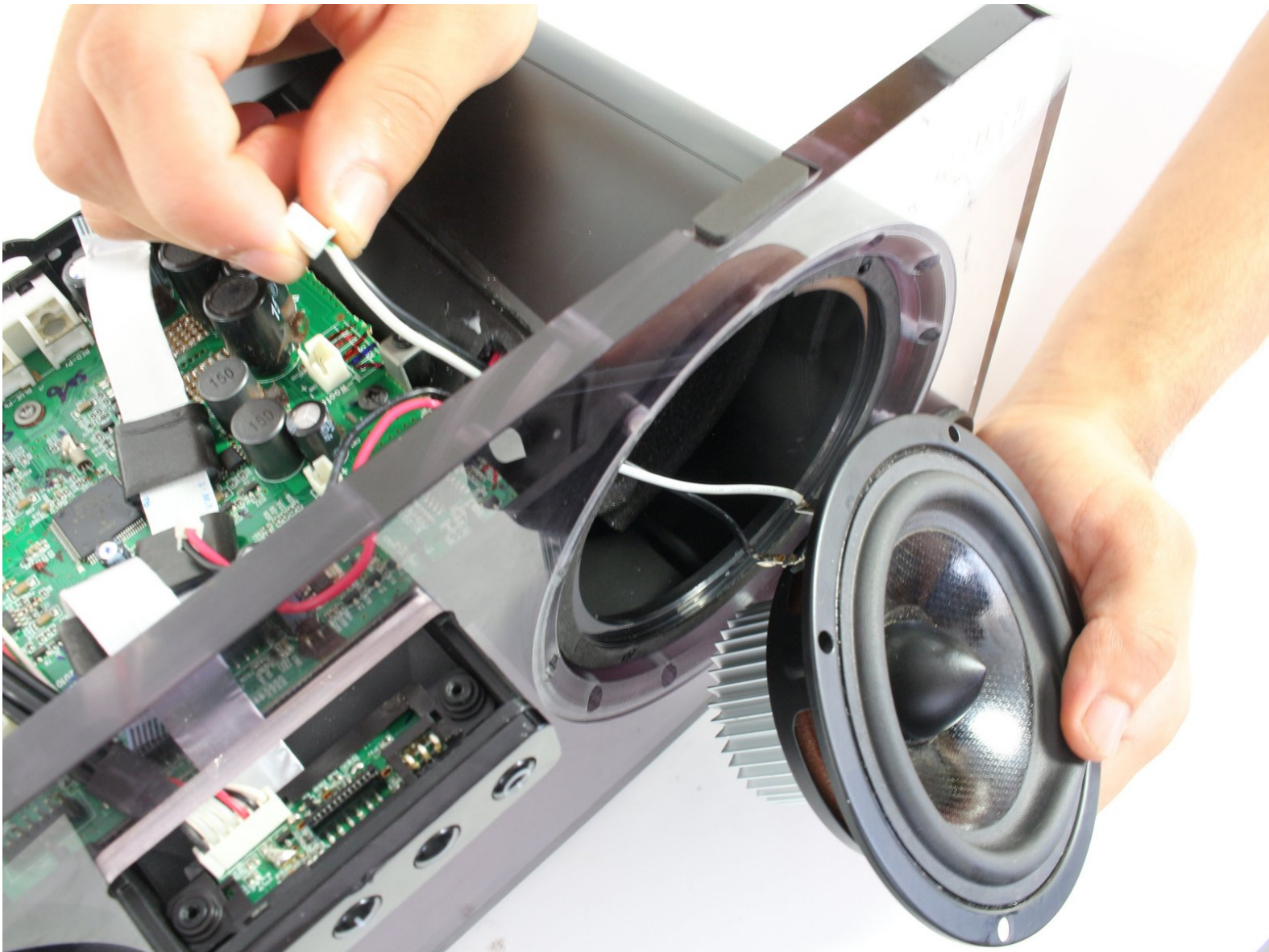




iHome iP1 Speaker(s) Replacement

Replace the speaker(s) on your iHome iP1.

Written By: Joshua Tran



INTRODUCTION

Use this guide to replace your iHome iP1's damaged or faulty speaker(s). Note that starting at Step 7, this guide only shows you how to replace the left speaker. To replace the right speaker, simply follow Steps 7-9 as if they are mirrored.



TOOLS:

- [Phillips #2 Screwdriver](#) (1)
 - [Metal Spudger Set](#) (1)
-

Step 1 — Back Cover



- Orient the iHome upside down with the speakers facing away from you.

Step 2



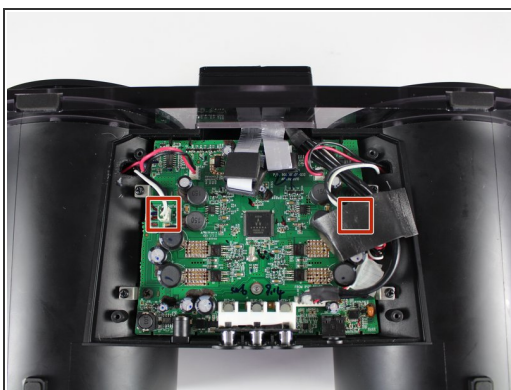
- Remove the four 9.5 mm Phillips #2 screws located on each of the four corners of the iHome's back cover.

Step 3



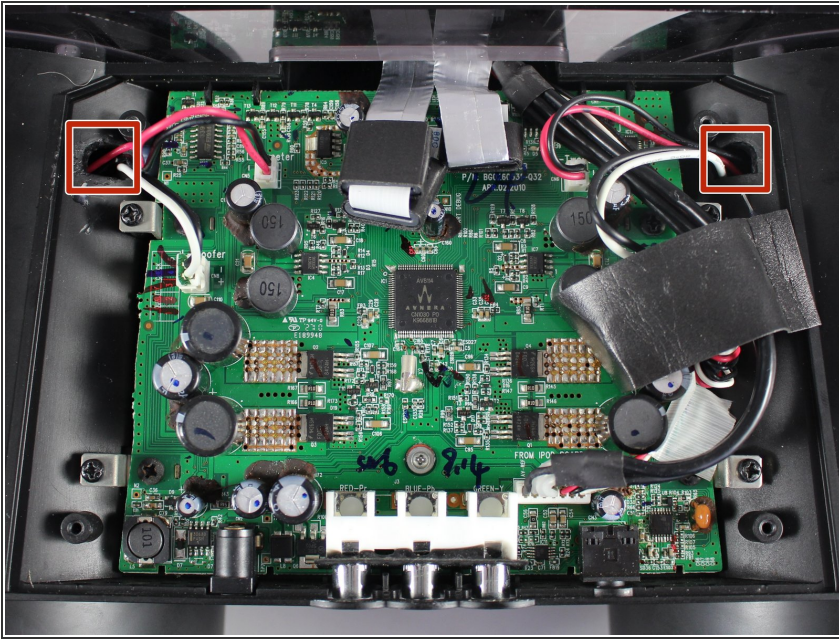
- Remove the back cover by grabbing its sides and lifting it off the iHome.

Step 4 — Speaker(s)



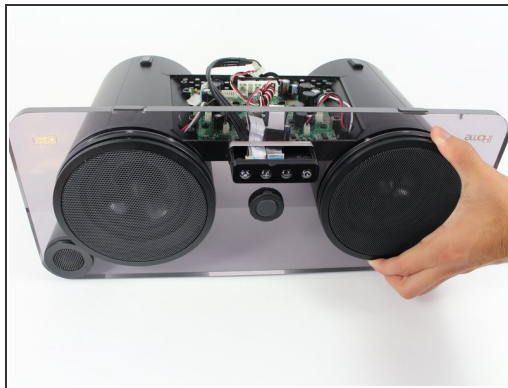
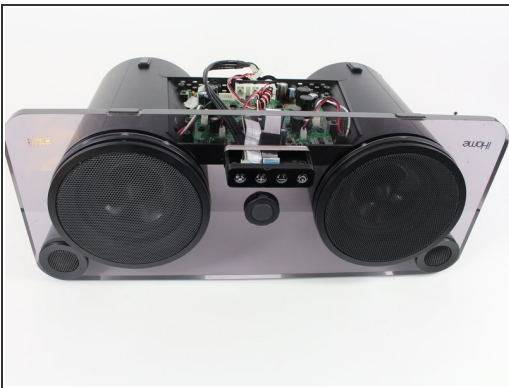
- Disconnect the white/black wires from the edges of the motherboard by pulling them away from their connection.
- ⓘ You may need to remove some black foam tape in order to fully disconnect some of the wires.

Step 5



- Carefully remove the glue attaching the wires to the housing using a metal spudger kit.
- ⓘ The glue is only used to keep the wires in place. It does not affect the function of the iHome.
- ⓘ If not all the glue can be removed at this step, remove the remaining glue after Step 8, where you can access the glue from the inside of the speaker housing.

Step 6



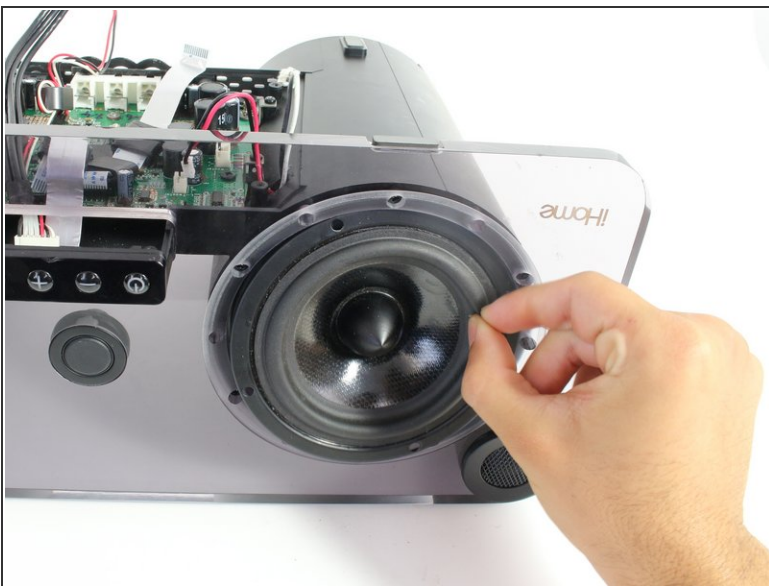
- Rotate the iHome so that the speakers are facing you.
- Remove the speaker covers by pulling them off of the faceplate.
- ⓘ After this step, this guide only shows how to replace the left speaker. To remove the right speaker, follow the remaining steps as if they are mirrored.

Step 7



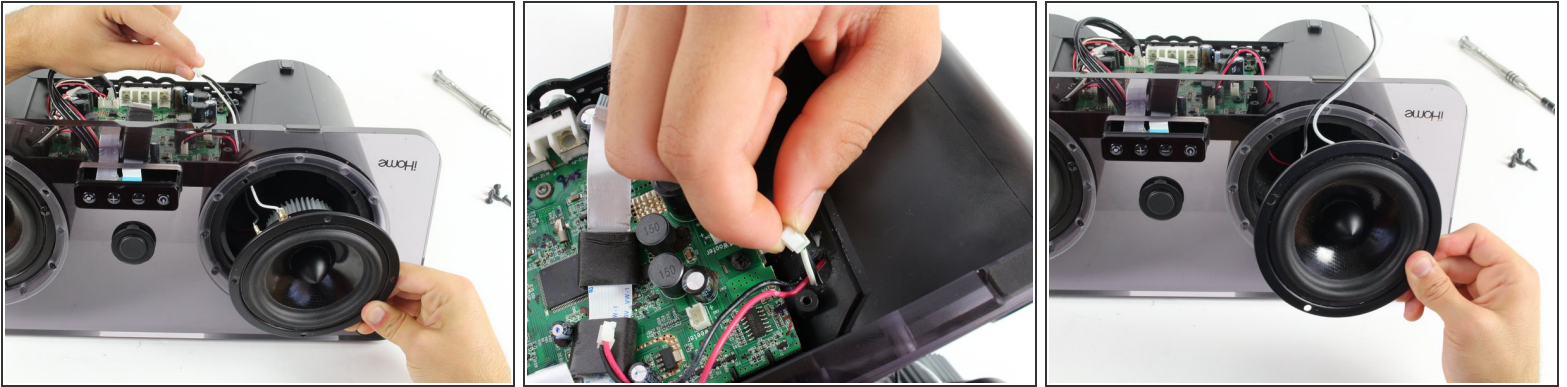
- Remove the four 12.0 mm Phillips #2 screws from the edges of the speaker.

Step 8



- Remove the speaker from the housing by gripping the rubber ring near the edge of the speaker and pulling it away from the faceplate.
- ⓘ Be careful not to tear the rubber. Once the speaker is loose enough, you can remove it from the housing by grabbing the metal speaker edges.

Step 9



- Remove the speaker from the iHome by feeding the black/white wires through the hole on the opposite side of the housing.

To reassemble your device, follow these instructions in reverse order.