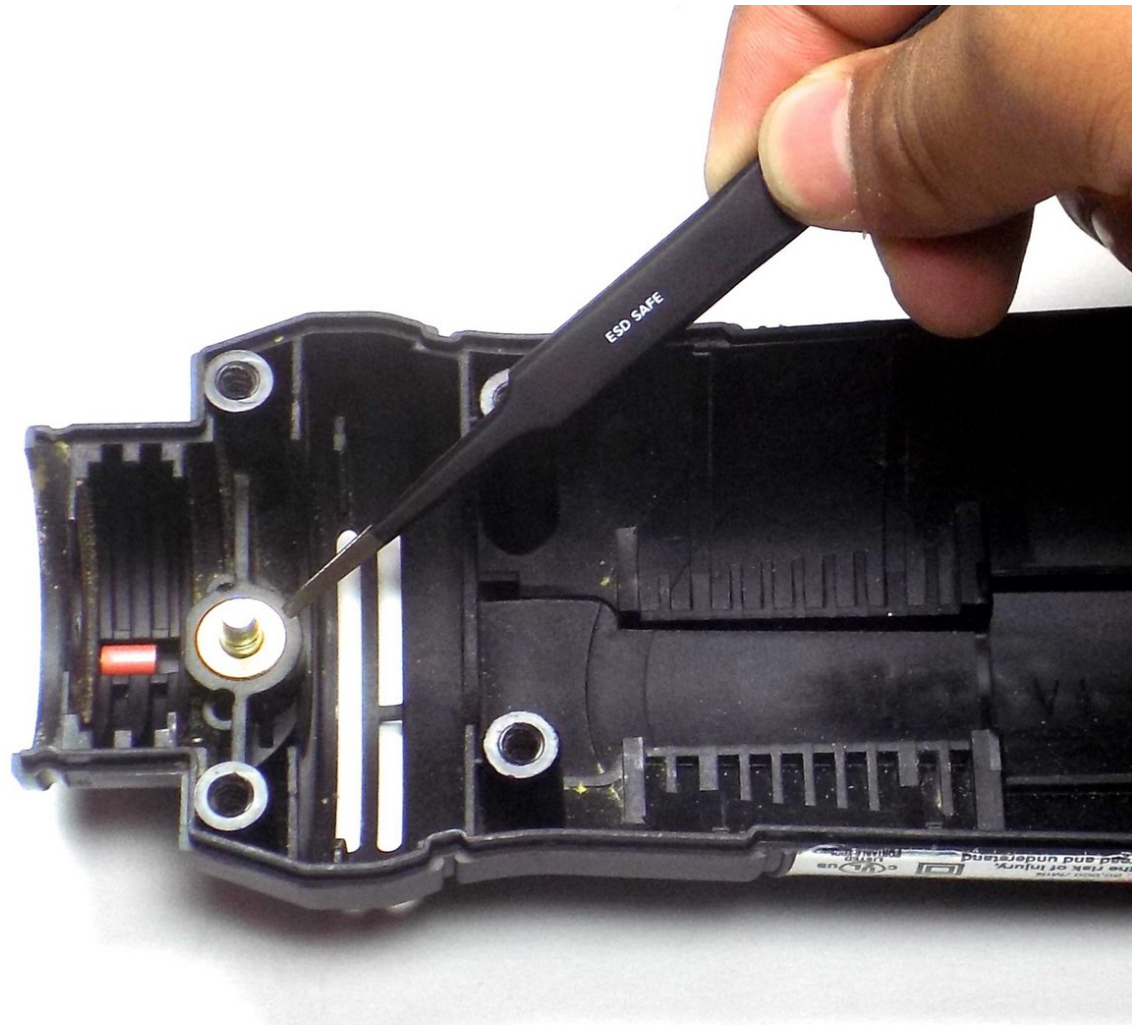




# RotoZip Rebel REB01 Type 2 Safety Lock Pin Replacement

Step-by-step instructions for replacing the safety lock pin.

Written By: Lauren Russell



## INTRODUCTION

If the safety lock pin is stuck, you will need to replace it. In order to replace the safety lock pin, you have to remove the saw casing and motor assembly.




### TOOLS:

- [64 Bit Driver Kit](#) (1)
  - [Metal Spudger](#) (1)
  - [Tweezers](#) (1)
-

## Step 1 — Saw Casing



 Unplug the saw before attempting any of the replacement guides.

- Orient the saw so that the handle is closest to you and the saw end points towards the left.

## Step 2



- Push down on the grey lock on the right side of the handle to unlock it.
- Pull the handle to detach it from the saw.

### Step 3



- Lift the black lock at the tip of the saw to unlock the depth gauge.
- Pull the depth gauge to detach it from the saw.

### Step 4



- Rotate the device so that the bottom of the saw is facing upwards.
- Remove the six 20mm screws with a 6mm flathead screwdriver.

## Step 5



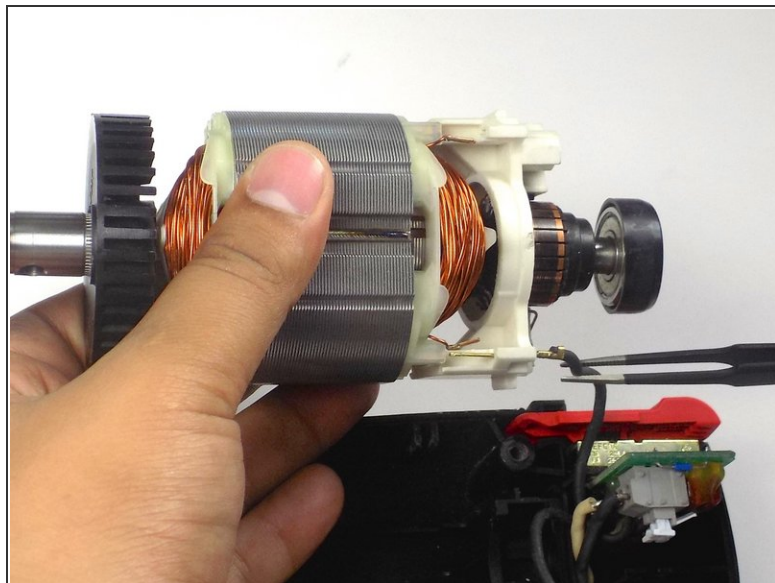
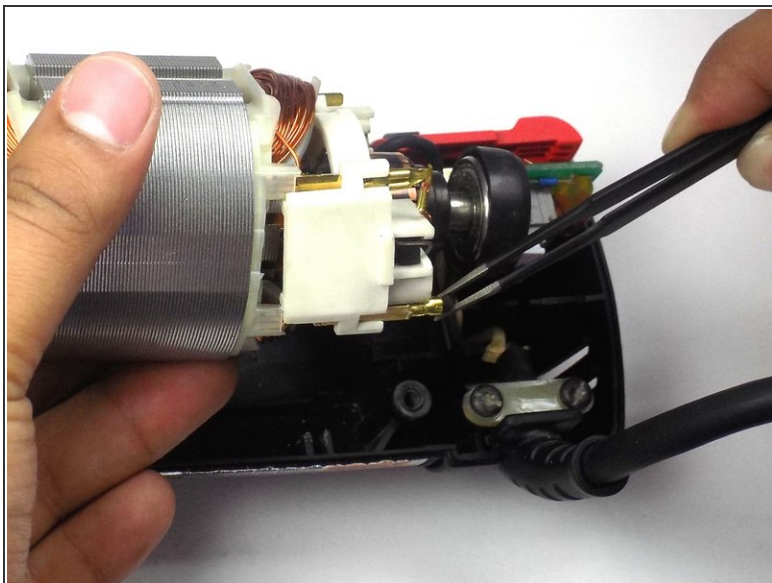
- Cut through the stickers on the right and left sides of the saw using a metal spudger.
- Pull off the top half of the casing.

## Step 6 — Motor



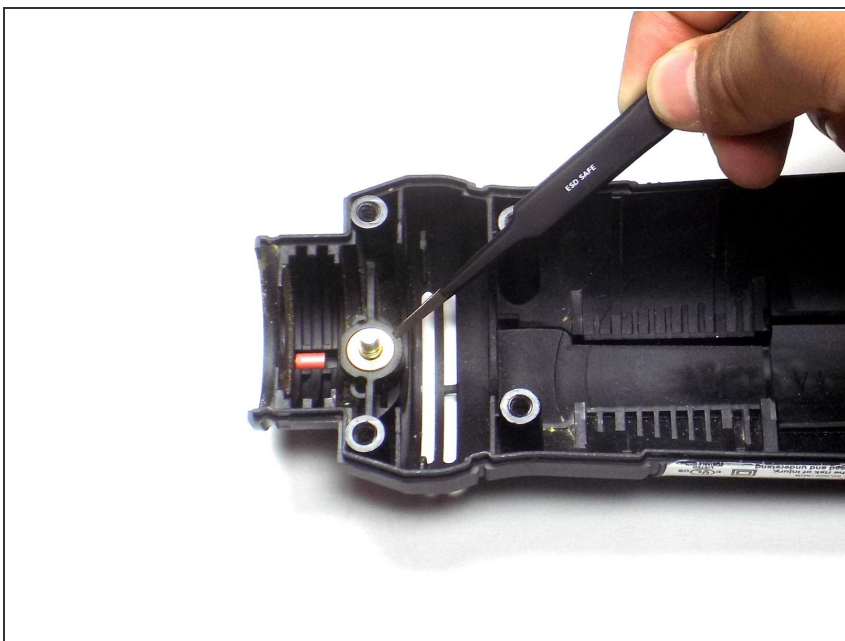
- Lift the motor assembly out of the casing.
- ⓘ The white plastic piece connecting the wires and holding the motor brushes in place is fragile. Be careful to not break it when removing the motor assembly.

## Step 7



- Detach the wire connected to the bottom of the motor assembly.
- Rotate the motor away from you so that the second wire is visible, and detach that wire as well.

## Step 8 — Safety Lock Pin



- Remove the sliding washer holding the pin in place.
- ⓘ The sliding washer is not shown in this guide. The action shows where the washer should be located.

## Step 9



- Flip the saw so that the 'Rotozip' label is facing upwards.
- Remove the safety lock pin and spring.

To reassemble your device, follow these instructions in reverse order.