



Magellan RoadMate 5120-LMTX Motherboard Replacement

This guide will show you how to replace your motherboard to fix a broken USB charging port, frequent device crashes, or a malfunctioning GPS unit.

Written By: Andrew Bading



INTRODUCTION

You will be removing many pieces of hardware during this process. Store all of these pieces in a safe location so as not to lose them. Also, save all the pieces of tape and/or plastic that will be removed as they are very important in securing wires internally.




TOOLS:

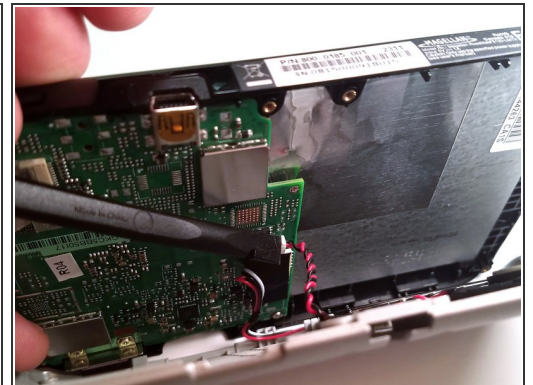
- [iFixit Opening Tools](#) (1)
 - [Phillips #00 Screwdriver](#) (1)
 - [Spudger](#) (1)
-


Step 1 — Back Cover



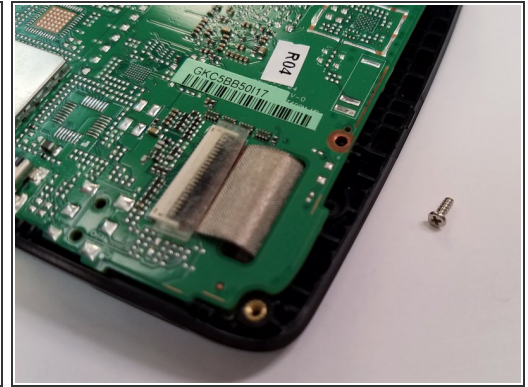
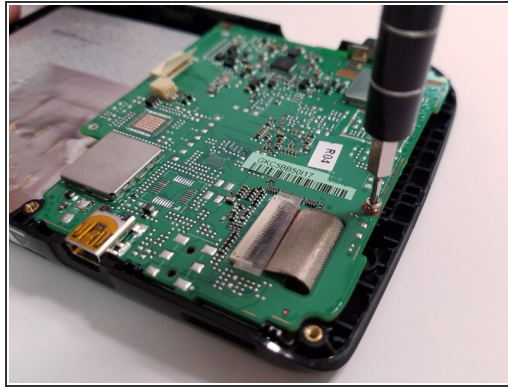
-  Power off the Magellan RoadMate before beginning.
- Remove the six 5mm Phillips #00 screws from the back of device.

Step 2



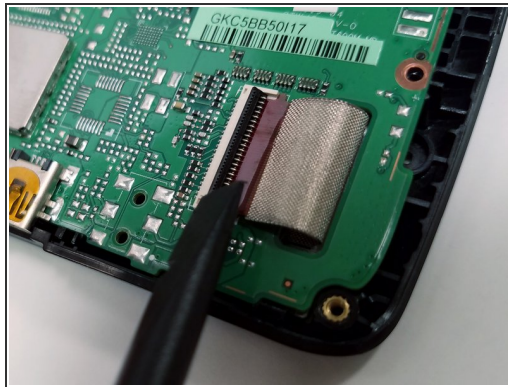
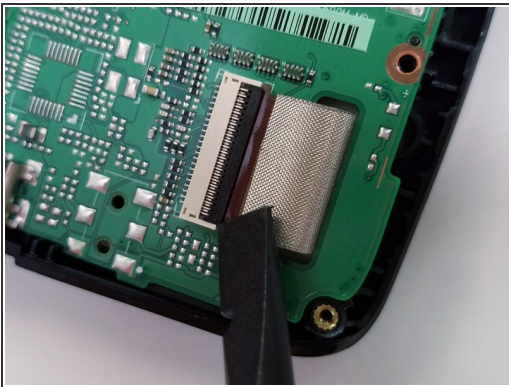
- Pry back cover off with a plastic opening tool just enough to see where the speaker is attached to the motherboard.
-  Do not fully open the back cover or you risk damaging the speaker wire.
- Use a spudger to disconnect the speaker connection from the motherboard.

Step 3 — Motherboard



- There will be two 5mm Phillips #00 screws that need to be removed from the motherboard.


Step 4



- Some devices may have a piece of tape or plastic over the ribbon cable latch. If your device has this, remove it before continuing.
- Carefully lift the black ribbon cable latch upwards with a spudger or other similar tool.
- Once the ribbon cable latch is opened, insert the pointed end of the spudger, or other similar tool, underneath the ribbon cable.
- Slowly pull out the ribbon cable in a straight, flat motion with respect to the latch.

Step 5



 Be careful not to touch any of the electrical components on the motherboard as damage may ensue.

- Carefully lift the motherboard out of the plastic housing by the edges while guiding the ribbon cable through the slot.
- Store the motherboard on a safe non-conductive surface, preferably an anti-static mat.

To reassemble your device, follow these instructions in reverse order.