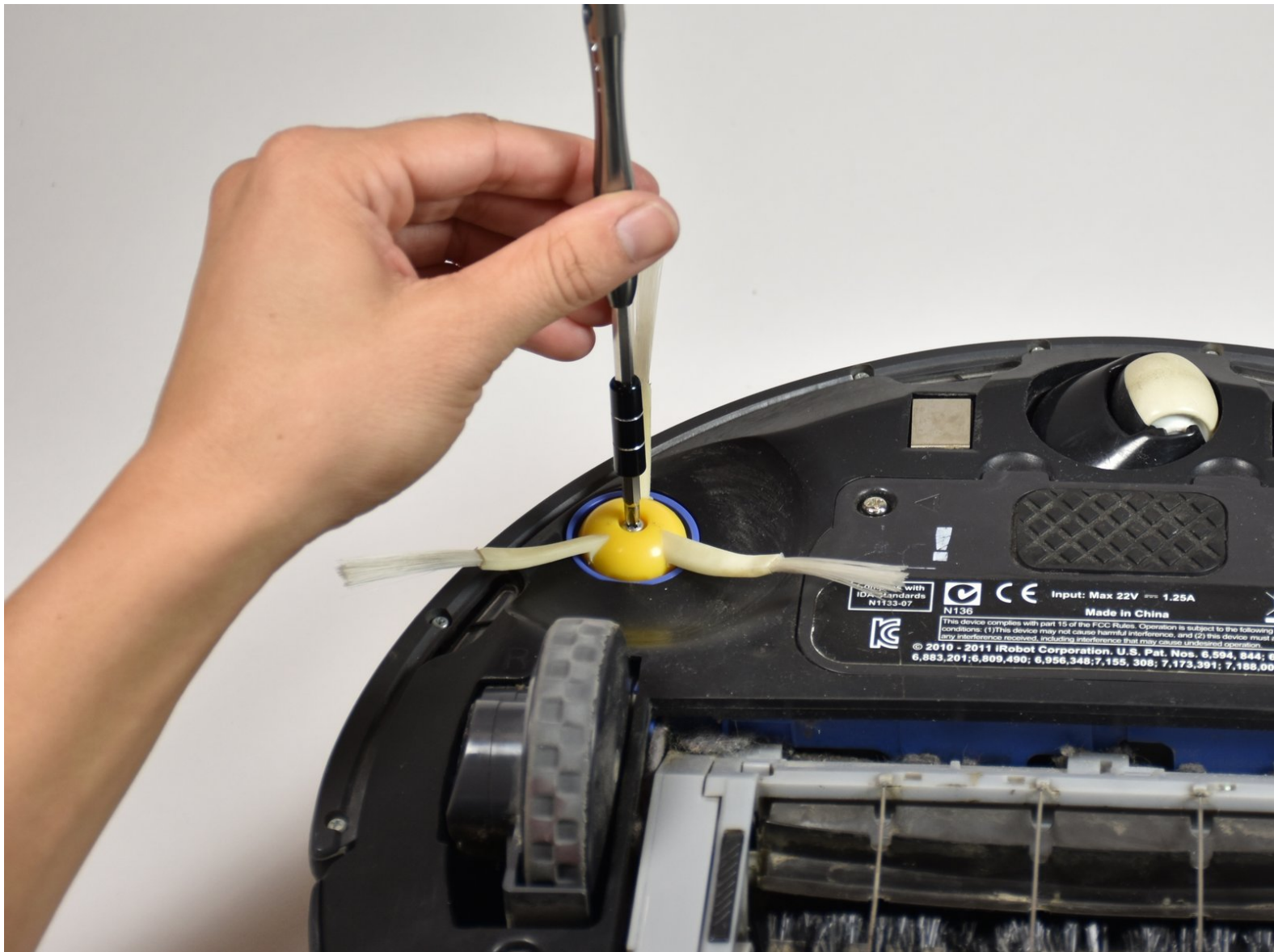




iRobot Roomba 770 Side Brush Motor Replacement

Use this guide to replace the motor for the side brush on the iRobot Roomba 770.

Written By: Ashley Woods



INTRODUCTION

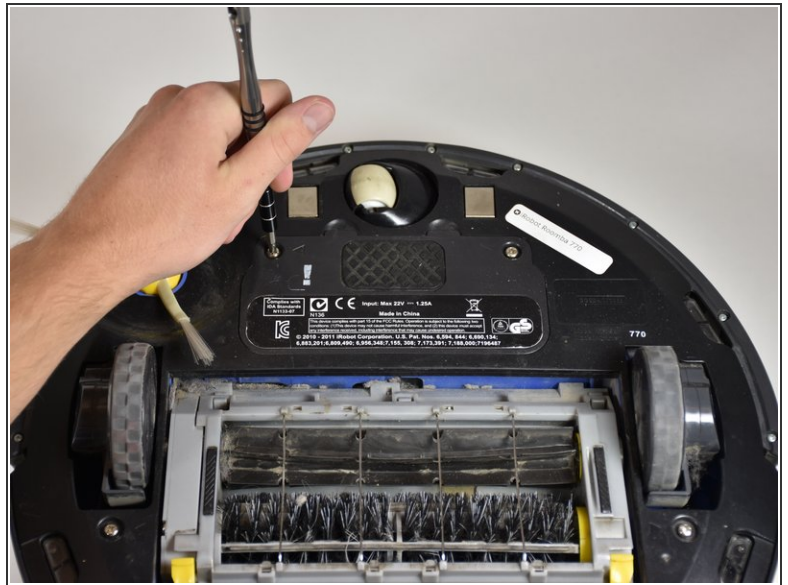
The side brush is responsible for cleaning the baseboard or the sides of objects it encounters.



TOOLS:

- [JIS Driver Set](#) (1)
 - [J1 Screwdriver Bit](#) (1)
-

Step 1 — Battery



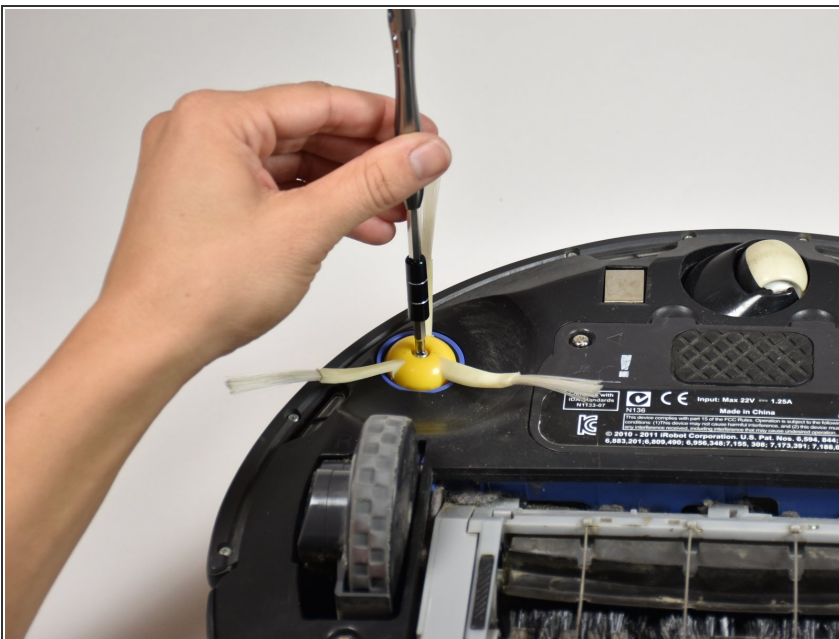
- Flip the Roomba over so that the wheels are facing up and the dust tray is closest to you.
- Using the J1 Phillips screwdriver, locate and unscrew the two 11mm phillips screws above the brushes on the battery panel.
- Remove the plastic plate from the battery box.

Step 2




- Locate the 2 green tabs on the left and right of the big yellow battery.
- Grab the tabs with your hands and lift straight upward.

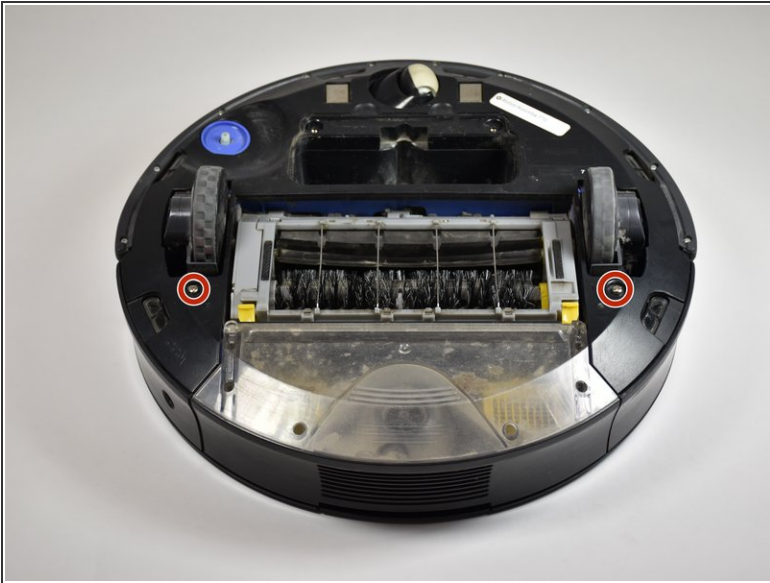
Step 3 — Side Brush Motor



- Using the J1 Philips Screwdriver, remove the 15.5 mm screw located in the center of the side brush.
- Remove the brush by pulling upwards.

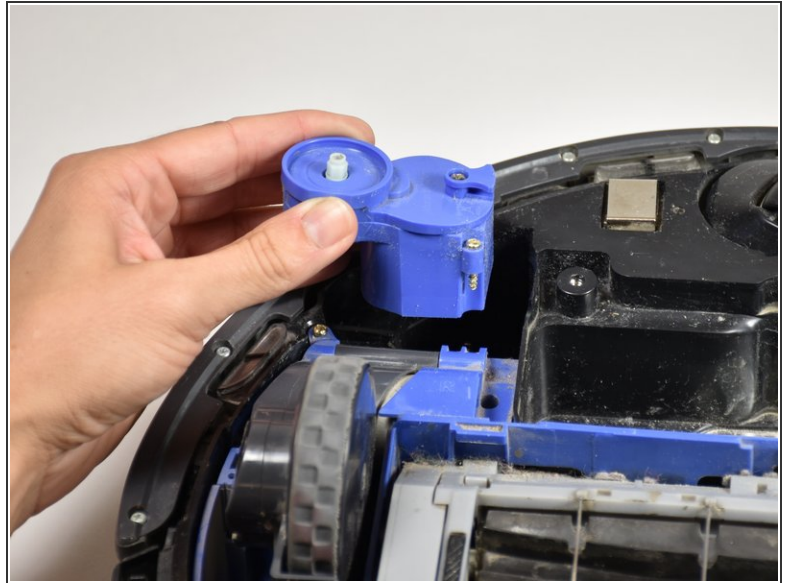
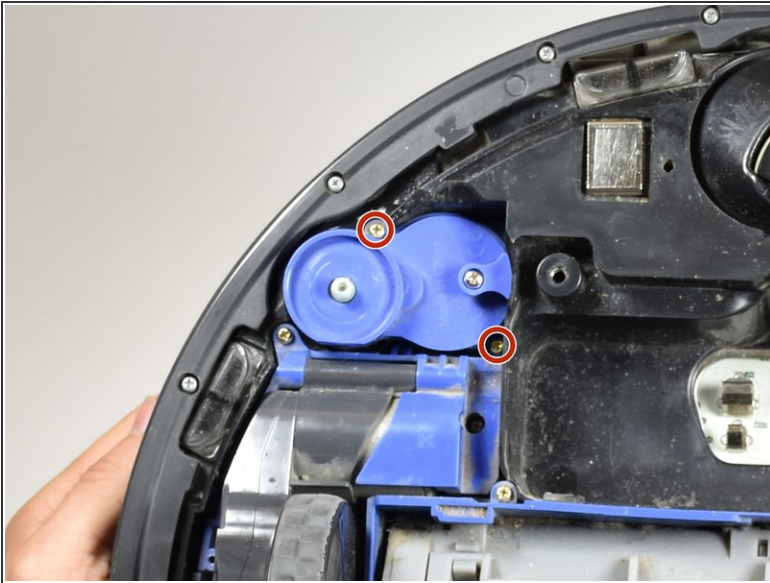
 Do not lean directly over the brush when attempting to remove. Removing the brush requires a firm pull and may release suddenly.

Step 4



- Using the J1 Philips Screwdriver, remove the two 15.5 mm screws located on the bottom of the plate covering the bottom of the roomba.
- Lift upwards to remove the bottom plate.

Step 5



- Using the J1 Philips Screwdriver, remove the two gold 15.5 mm screws located on the blue plastic module the side brush had previously been attached too.
- Lift the blue module upwards. The module contains the motor for the side brush.

To reassemble your device, follow these instructions in reverse order.