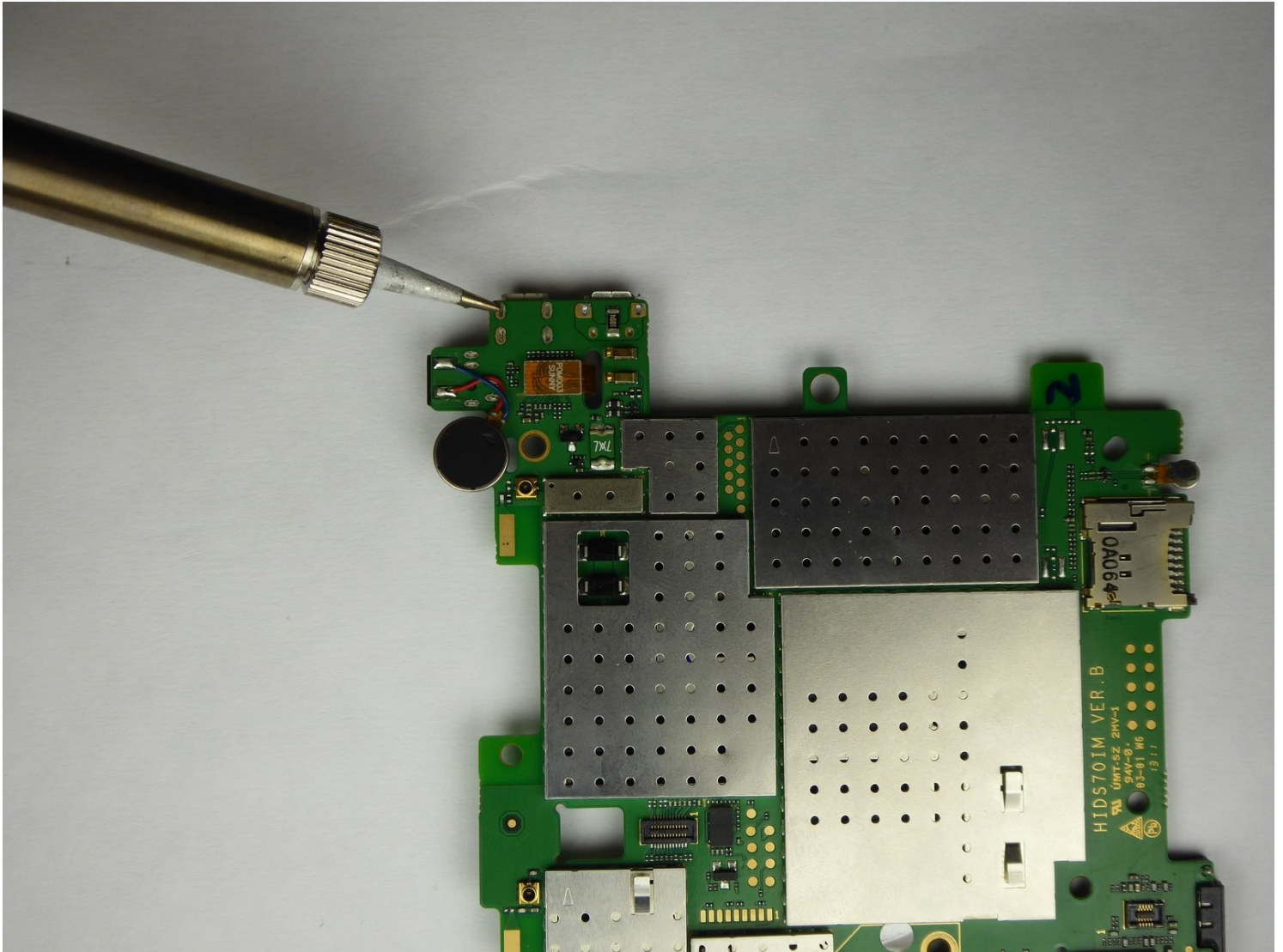




Huawei Ideos S7 Slim Mini-USB port Replacement

This will enable the user to correct any...

Written By: Gregory Philip



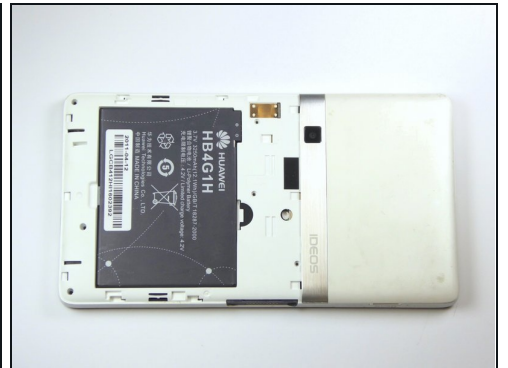
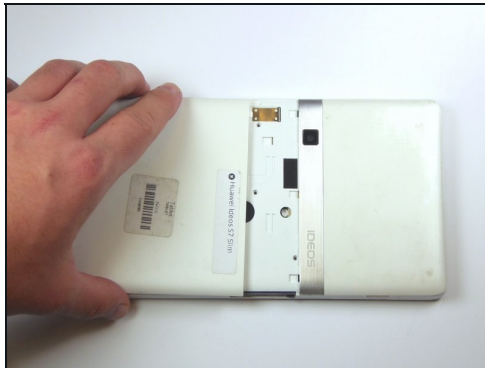
INTRODUCTION

This will enable the user to correct any problems with the mini-usb port if it has malfunctioned.

TOOLS:

iFixit Opening Tool (1)
T5 Torx Screwdriver (1)
Phillips #00 Screwdriver (1)
Soldering Iron (1)
Desoldering Braid (1)

Step 1 — Battery



- Place the tablet on a flat clear surface to keep the screen safe.
- Slide the larger portion of the back cover off the tablet.
- This will reveal the battery.

Step 2



- Lift the battery out with your finger.

⚠ Make sure you use the slot near the bottom of the device as shown. Trying to lift from anywhere else will not work and may damage the battery or the device.

Step 3 — Logic Board



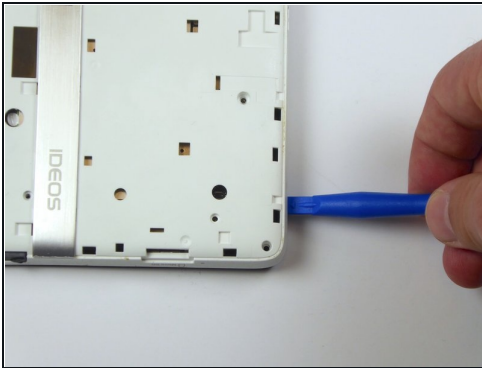
- Using a plastic opening tool, pry off the top cover casing gently by moving the tool along all three sides.

Step 4



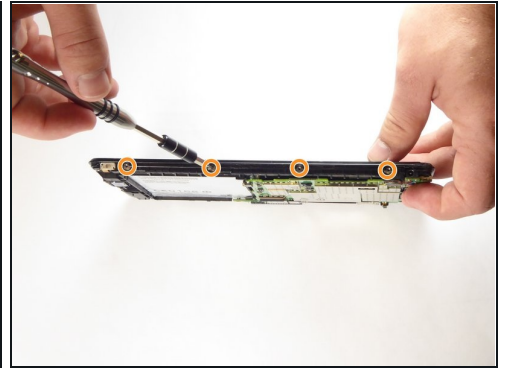
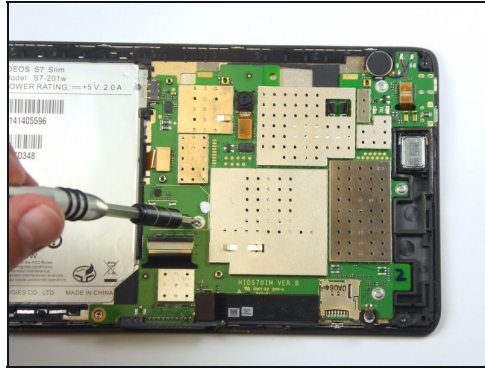
- With a T5 hexagonal head, remove the nine black 2.5 mm torx screws. Place them carefully aside on the magnetic mat.

Step 5



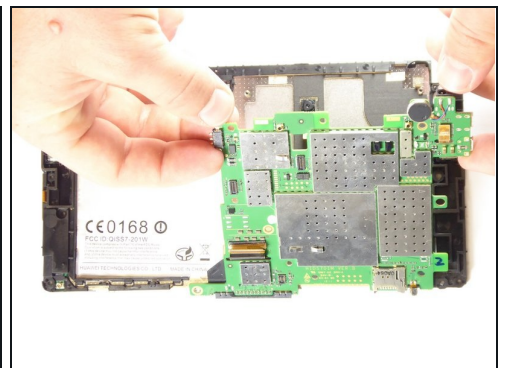
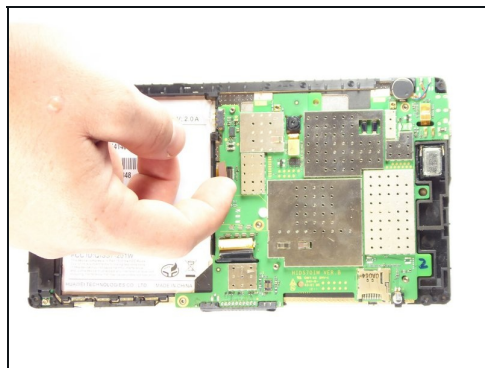
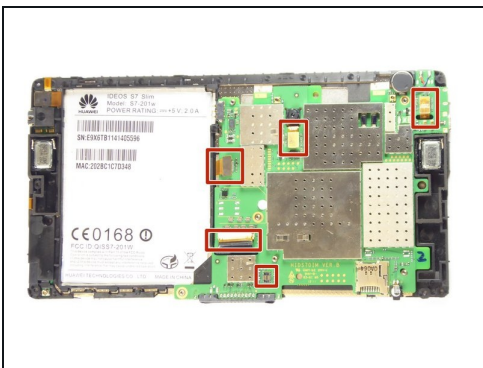
- Using a plastic opening tool, pry off the back casing gently on each side of the tablet.

Step 6



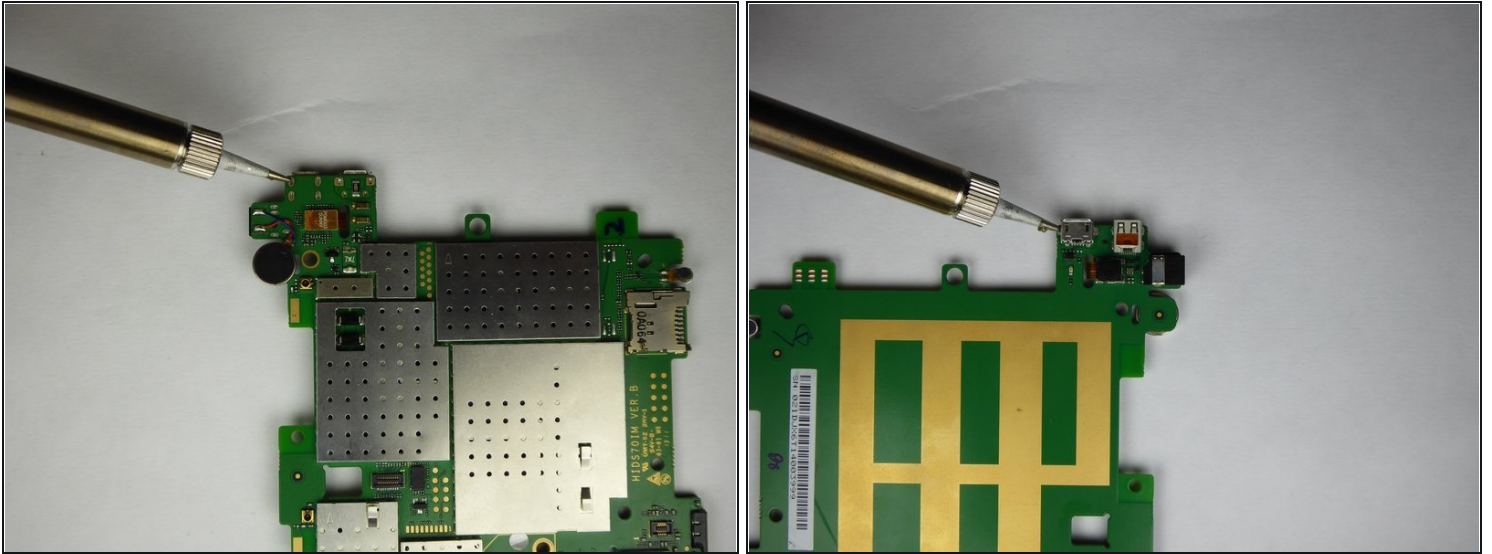
- Using a Phillips #00 screwdriver, remove the following screws:
 - Four 5mm wide grey Phillips screws on the logic board.
- ❗ One of the 5mm screws is hidden under the circular white tape in the center of the logic board.
- Seven 3mm small grey Phillips screws (four on one side, three on the other) from the black side casing.

Step 7



- Disconnect the five cables connected to the logic board and then carefully lift the logic board out of the casing.

Step 8 — Mini-USB port



⚠ During soldering, perform this task in a well ventilated area and wear safety glasses to protect your eyes .

- Heat the solder to the mini-USB port.
- Remove the melted solder using a [solder sucker](#) or desoldering braid.
- Replace the old mini-USB port with a new one by attaching it using a new solder.
- Let cool, then replace logic board in tablet.

To reassemble your device, follow these instructions in reverse order.