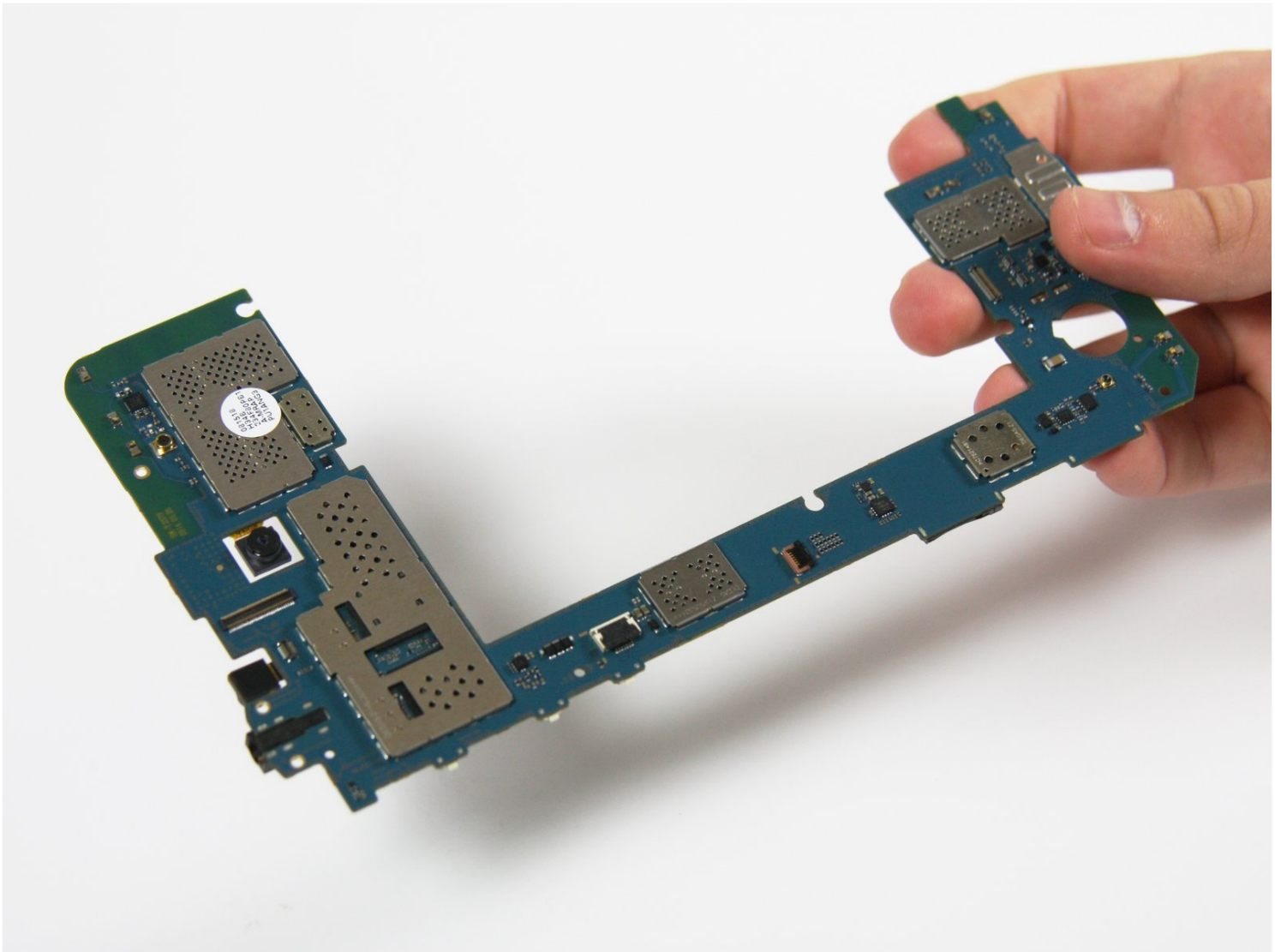




Samsung Galaxy Tab 4 7.0 Sprint Rear-Facing Camera Replacement

If your rear camera is taking blurry pictures...

Written By: Valentina Franco



INTRODUCTION

If your rear camera is taking blurry pictures or otherwise not working properly, it may need to be replaced. This guide will demonstrate how to replace the rear-facing camera.

TOOLS:

[iFixit Opening Tool](#) (1)

[Tweezers](#) (1)

[Phillips #00 Screwdriver](#) (1)

Step 1 — Motherboard



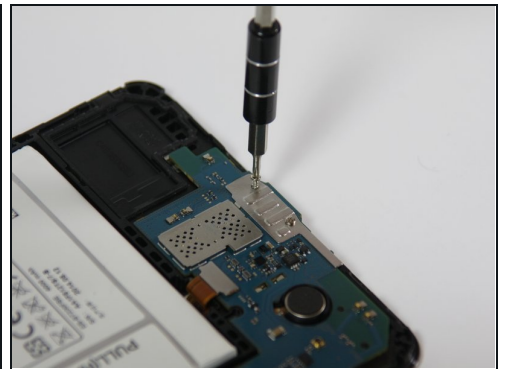
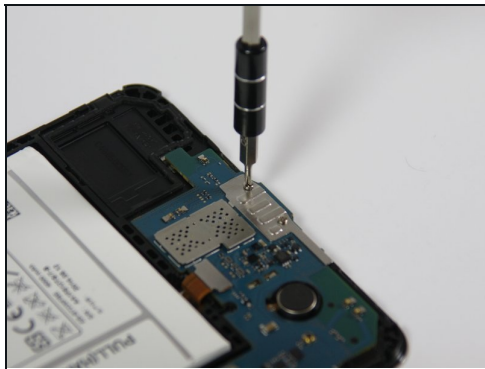
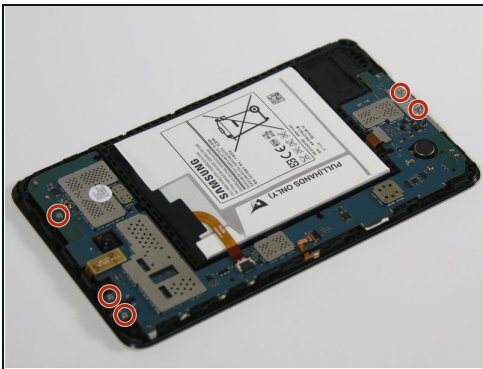
- Insert the plastic opening tool into the gap between the device frame and the back panel on any side of the device.
- Slide the opening tool around the edges of the device to disconnect the back panel from the frame.

Step 2



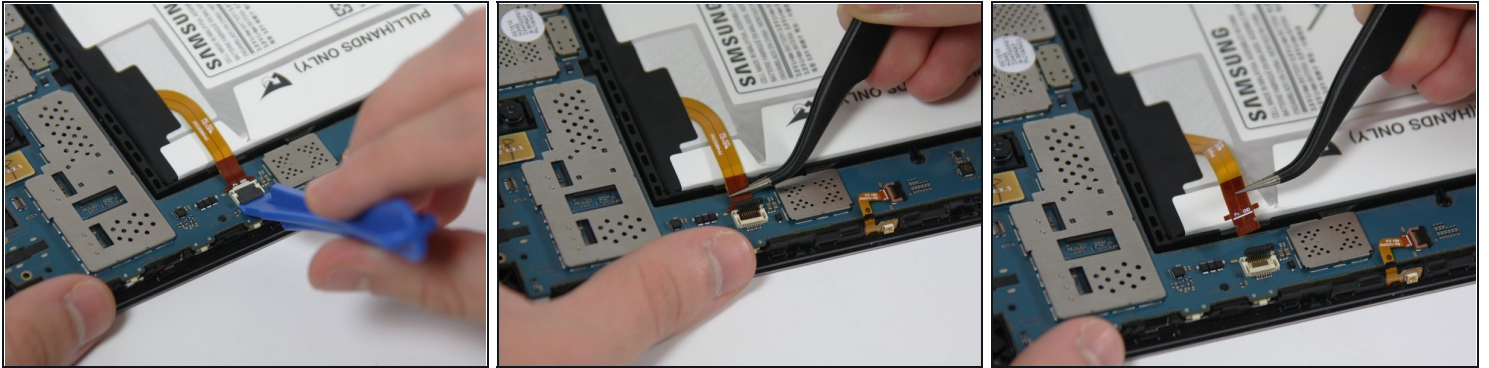
- Carefully remove the back panel from the frame of the device.

Step 3



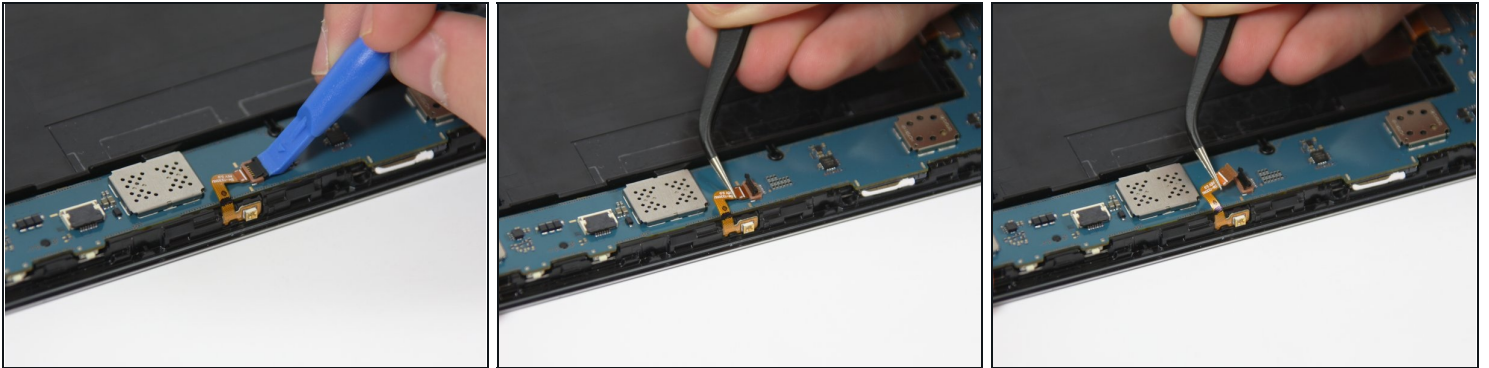
- Using a Phillips #00 Screwdriver, remove the five 4 mm screws connecting the motherboard to the frame of the device.

Step 4



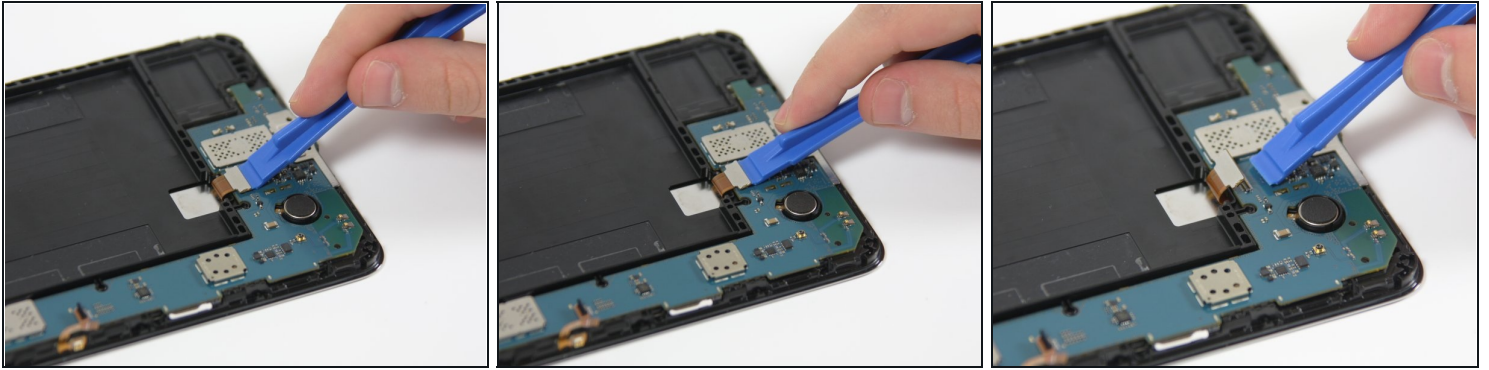
- Use the plastic opening tool to unlock the battery wire from the motherboard by flipping-up the small retaining flap.
- Use the [tweezers](#) to carefully remove the battery wire from the motherboard by pulling it away from the retainer flap.

Step 5



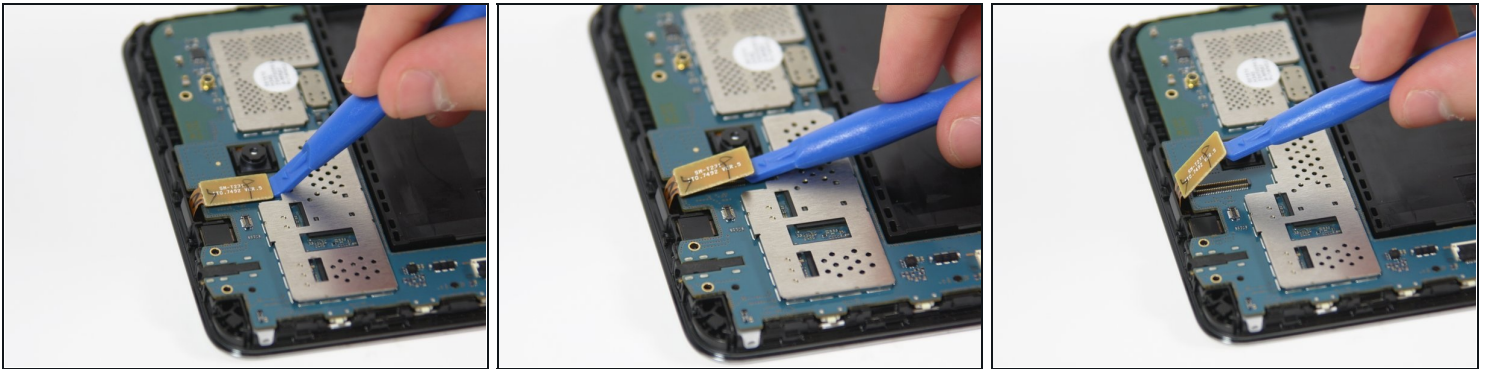
- Use the plastic opening tool to unlock the wire on the narrow section of the motherboard by flipping-up the retaining flap.
- Use the tweezers to carefully remove the wire from the motherboard by sliding it away from the retaining flap.

Step 6



- Disconnect the wire near the bottom of the motherboard by placing the plastic opening tool under the edge of the connector to flip it up.

Step 7



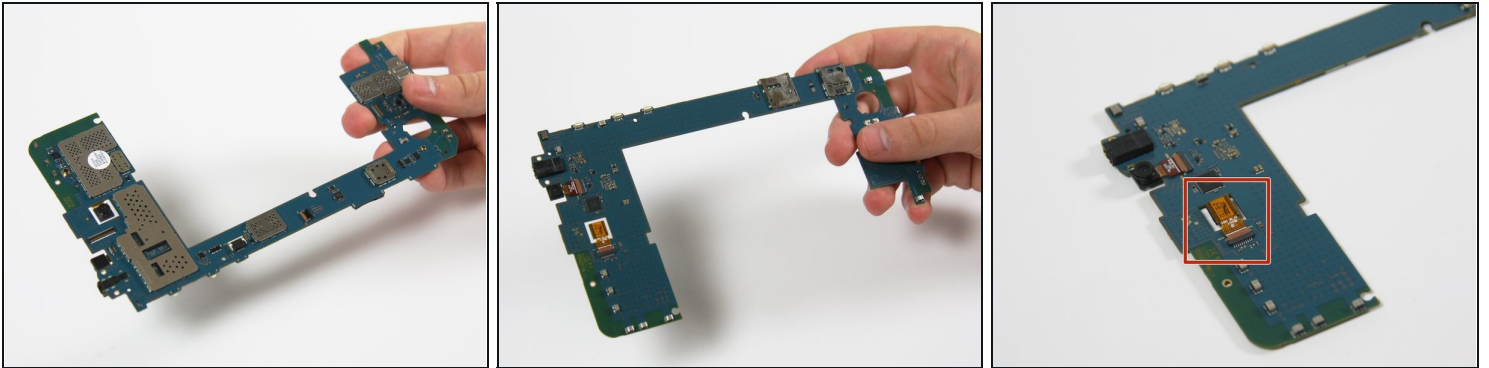
- Disconnect the wire near the top of the motherboard by placing the plastic opening tool under the edge of the connector to flip it up.

Step 8



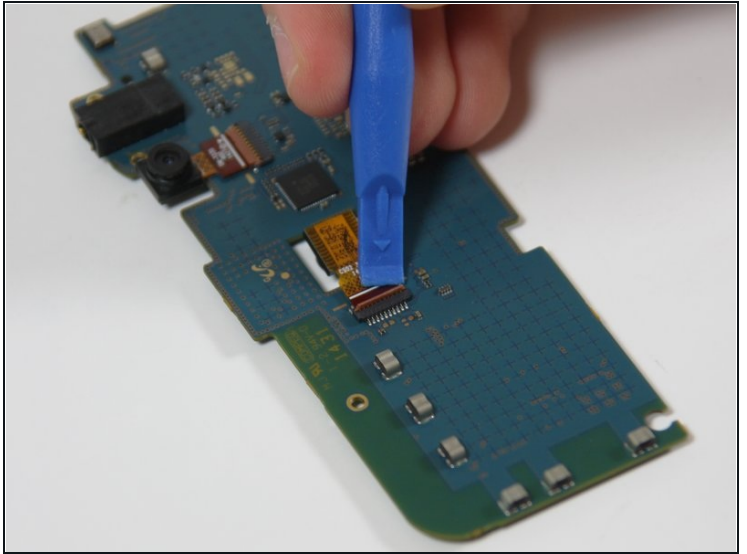
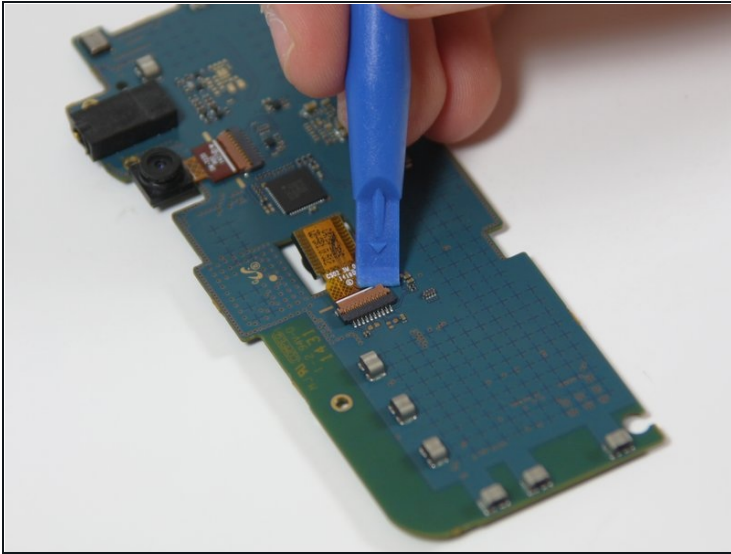
- Gently remove the motherboard from the frame of the device by grabbing the top and bottom ends and pulling it toward you.
- ⓘ Several plastic tabs keep the motherboard in place, so you will have to apply some force.

Step 9 — Rear-Facing Camera



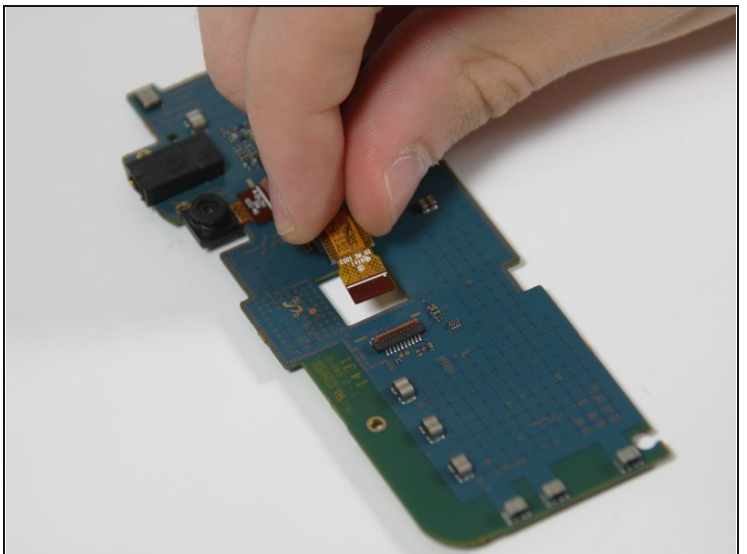
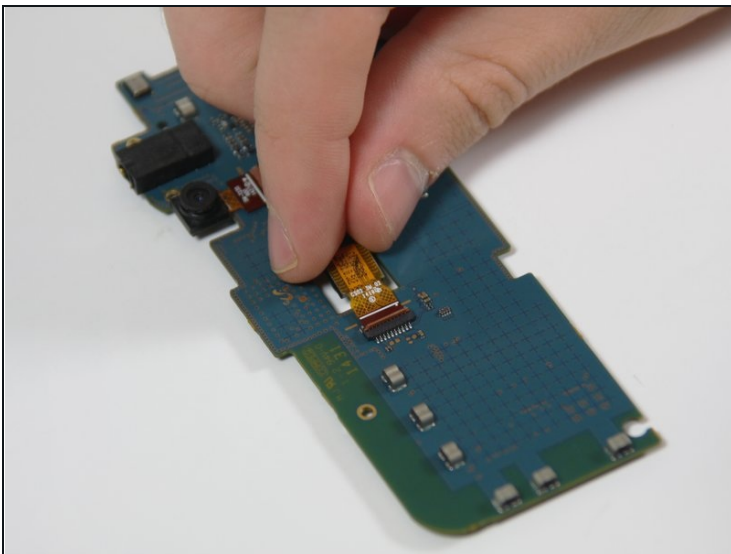
- Flip the motherboard over to view the back side.
- Locate the rear-facing camera on the motherboard.

Step 10



- Use a plastic opening tool to unlock the rear-facing camera wire from the motherboard by flipping up the retaining flap.

Step 11



- Use your fingers to grip the camera and carefully pull it out and away from the motherboard

To reassemble your device, follow these instructions in reverse order.