



# Braven BRV-HD Speakers Replacement

Using this guide you will be able to locate and replace the speakers for the Braven BRV-HD Bluetooth Speaker.

Written By: Matthew Nguyen



# INTRODUCTION

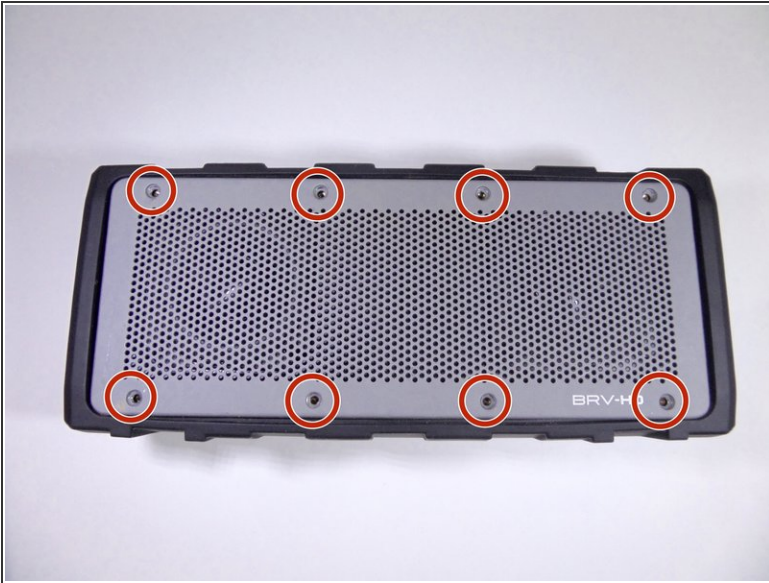
Following this guide will show you how to access and replace the speakers.



## TOOLS:

- [Pro Tech Toolkit](#) (1)
  - [2mm Hex Key](#) (1)
  - [iFixit Opening Tools](#) (1)
  - [J1 Screwdriver Bit](#) (1)
-

## Step 1 — Battery



- Placing the device on its back with the BRV-HD logo facing up, remove the eight 5mm hexagon 2.0 screws on the front panel.
- ⓘ Make sure the device is turned off before starting.

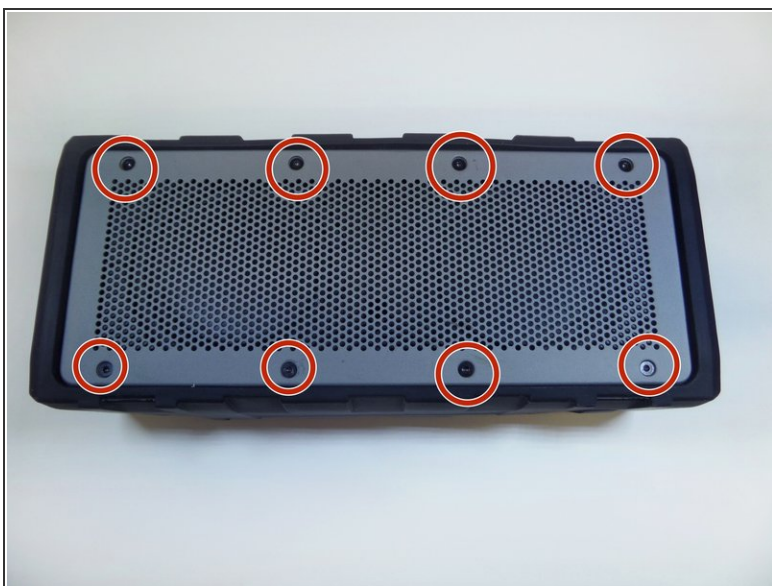
## Step 2



- Lift the front panel off of the speaker using a plastic opening tool.



### Step 3



- Placing the device with the back panel facing up, remove the eight 5mm hexagon 2.0 screws from the back panel.

### Step 4



- Lift the back panel off of the device with a plastic opening tool.

## Step 5



- Turning the device on its side, unscrew the four 15mm hexagon 2.0 screws on the charging port panel.

## Step 6



- Remove the outer rubber flap and the plastic side port panel.



## Step 7



- Place the device on its front.
- Loosen the four 12mm Phillips screws in the four corners with a J1 screwdriver.
- Loosen the two 8mm Phillips screws in the center with a J1 screwdriver.
- ⓘ These screws are difficult to reach and will require a screwdriver extension piece.

## Step 8



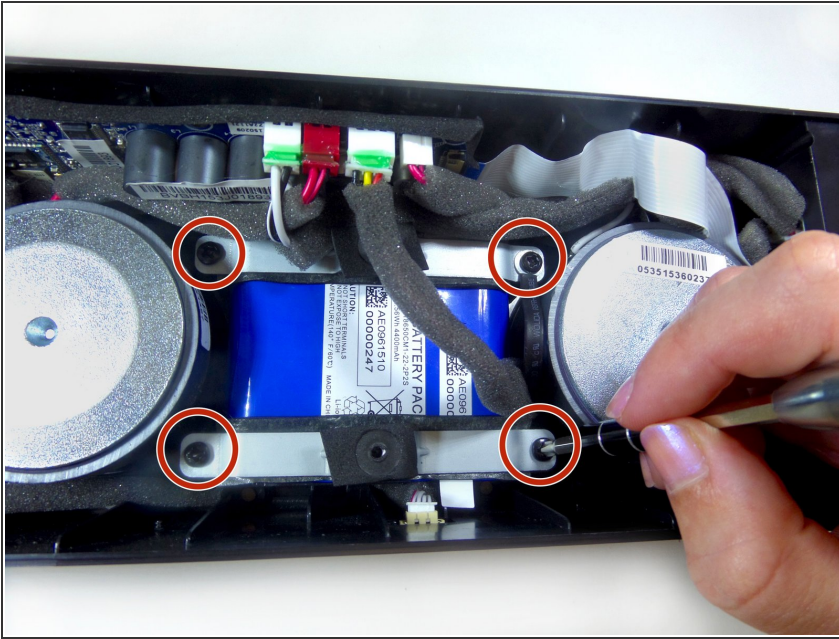
- Pull off the rubber sleeve surrounding the speaker using your hands.
- ⓘ There is adhesive binding the sleeve to the speaker and force will be required to remove the sleeve.

## Step 9



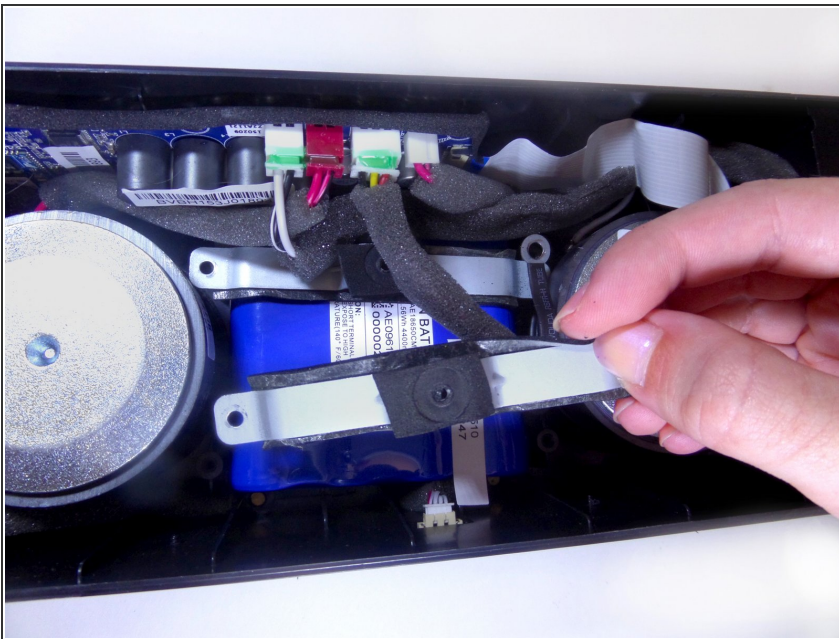
- Lift the black covering off of the speaker using both hands.
- ⓘ Loose screws that you were unable to remove with the screwdriver will be removed when you lift off the black covering.

## Step 10



- Remove the four 12mm Phillips screws securing the two battery brackets with a J1 screwdriver.
- ⓘ Move any wires aside to have better access to the screws securing the battery.

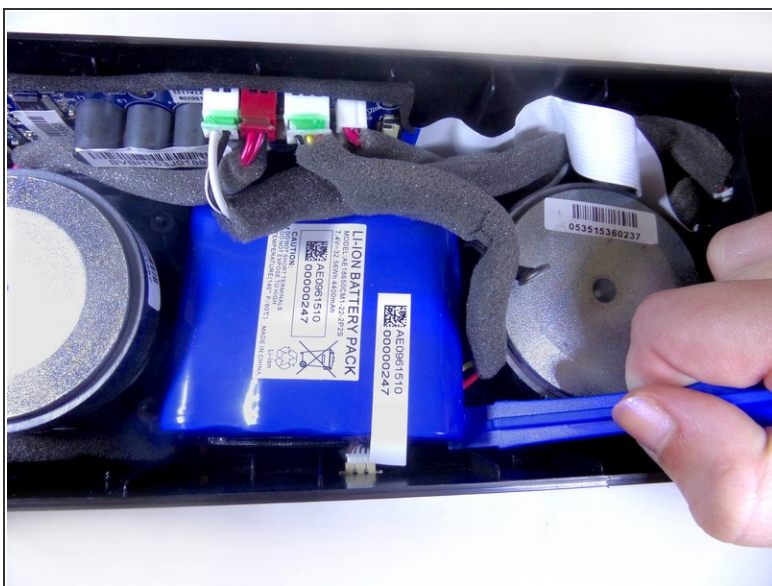
## Step 11



- Remove the two brackets that hold down the battery using your hands.

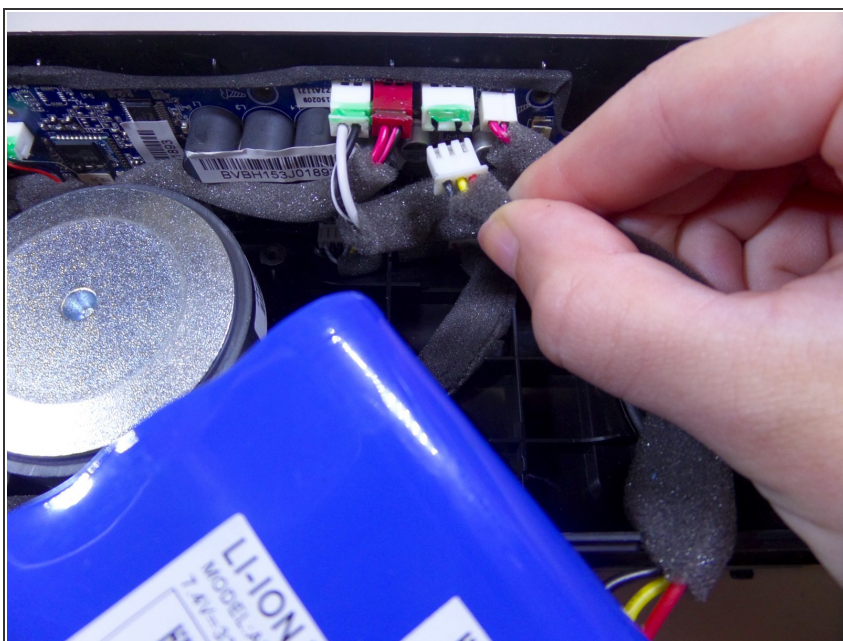


## Step 12



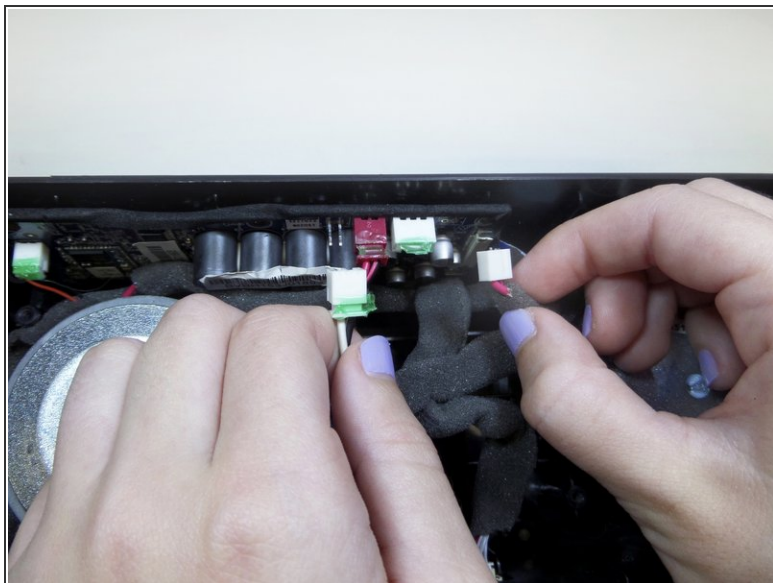
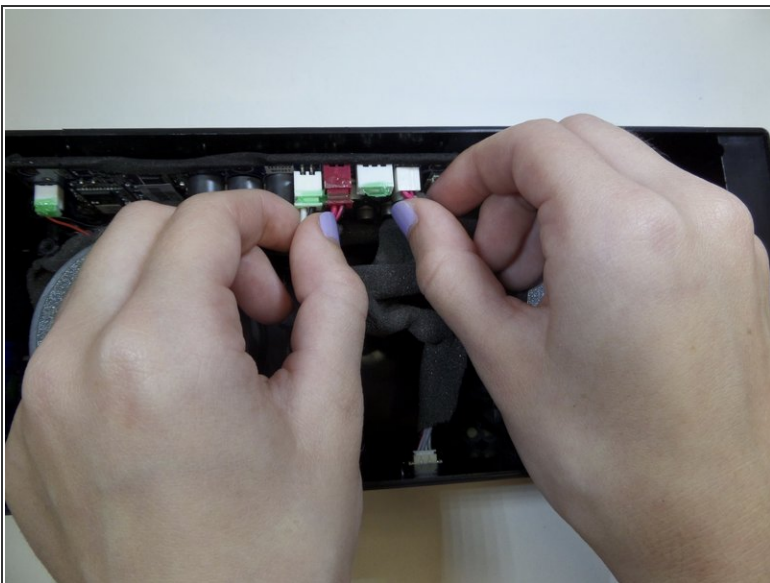
- Use the plastic opening tool to lift up the battery.
- Remove the battery using your hands.
- ⓘ The wires connecting the battery to the motherboard are still plugged in. Avoid pulling on the battery or these wires may break.

## Step 13



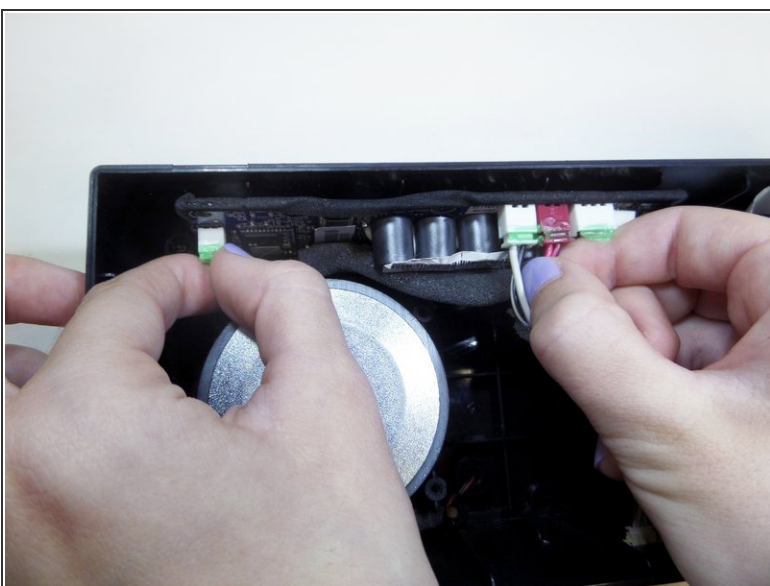
- Disconnect the wire attaching the battery to the motherboard.
- ⓘ There is green glue on the wire ports preventing the wires from falling out. Peel and remove this glue as necessary.
- ⚠ Be careful when pulling out the wires from their ports. The metal stems attached to the ports can break. A spudger or tweezers may help.

## Step 14 — Speakers



- Locate the two wires that connect the right speaker to the motherboard.
- Gently disconnect the wires from the motherboard.

## Step 15



- Locate the two wires that connect the left speaker to the motherboard.
- Gently disconnect the wires from the motherboard.



## Step 16



- Position the device facing up and remove eight 10mm Phillips head screws using a J1 Phillips head screwdriver.

## Step 17



- Lift the speaker out using the metal spudger and complete lifting by using your hands.
- Remove the speakers with your hands and replace with new ones.

To reassemble your device, follow these instructions in reverse order.