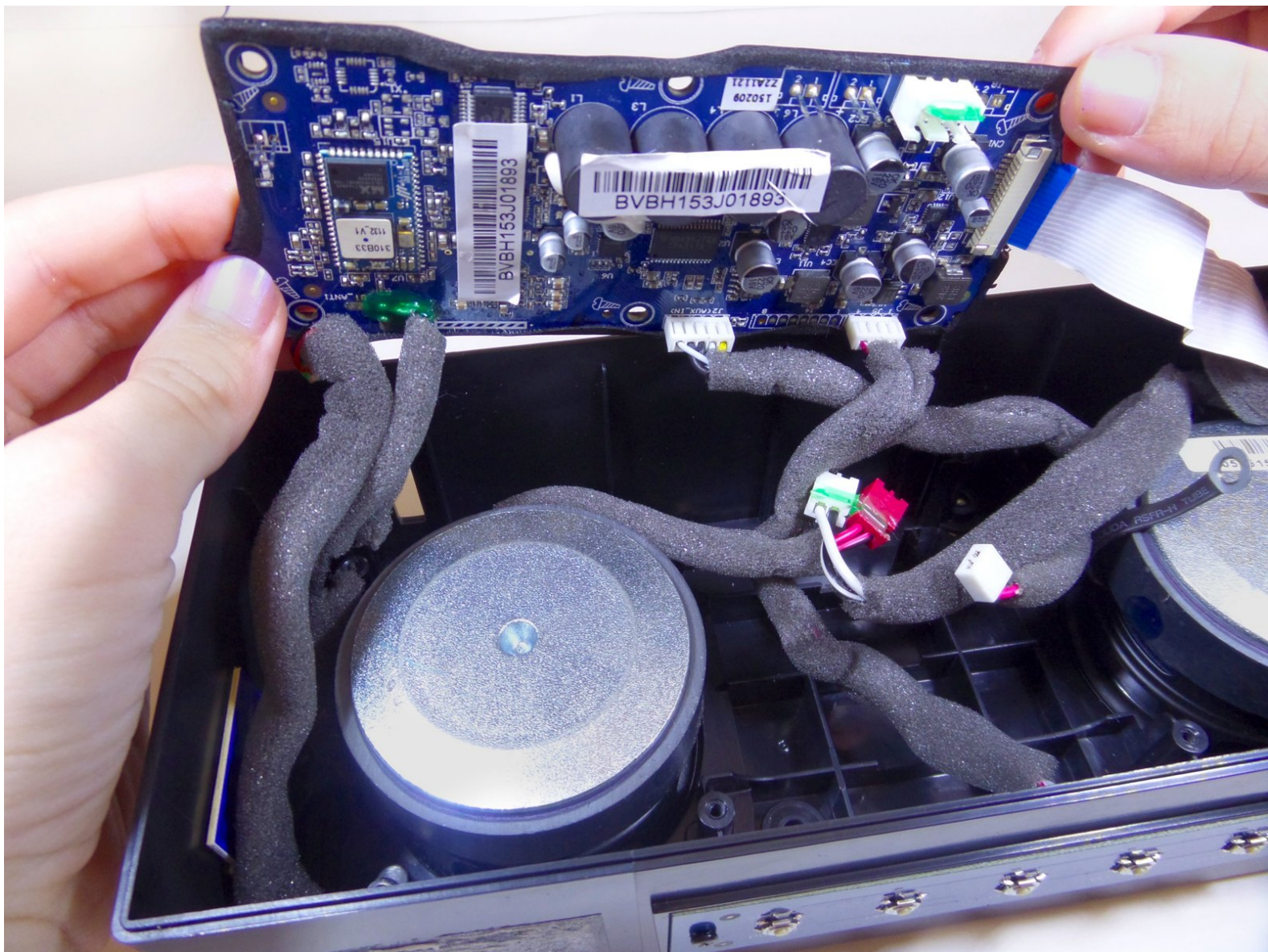




Braven BRV-HD Motherboard Replacement

Using this guide you will be able to identify and replace the motherboard for the Braven BRV-HD Bluetooth Speaker.

Written By: Courtney Van Buren



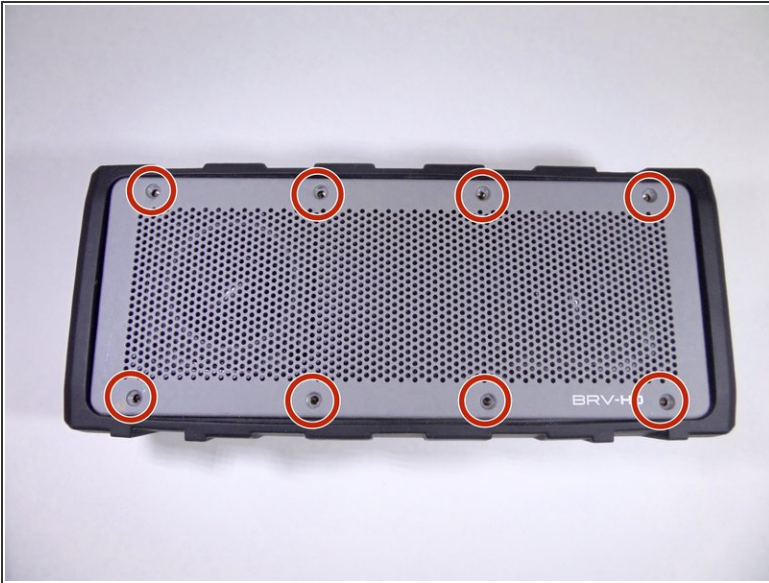
INTRODUCTION

Following this guide will show you how to access and replace the motherboard. The Braven BRV-HD Battery Replacement is a prerequisite for this guide.

TOOLS:

- [Pro Tech Toolkit](#) (1)
 - [2mm Hex Key](#) (1)
 - [iFixit Opening Tools](#) (1)
 - [J1 Screwdriver Bit](#) (1)
-

Step 1 — Battery



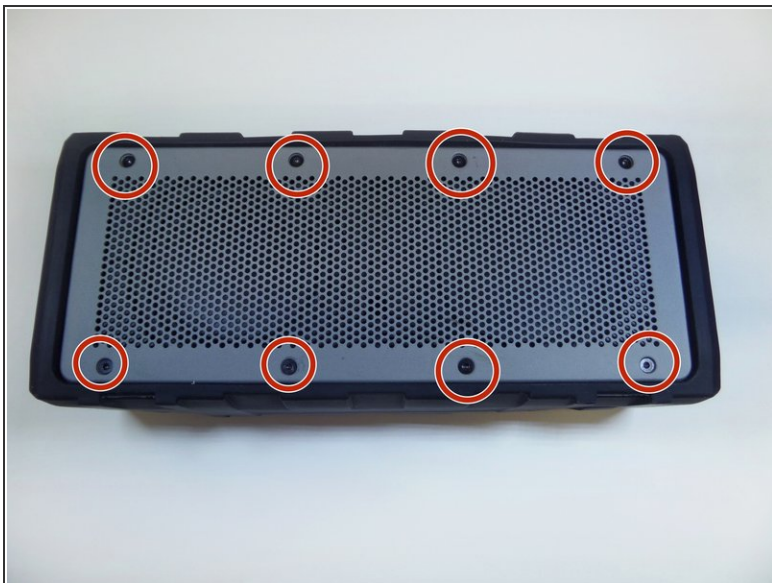
- Placing the device on its back with the BRV-HD logo facing up, remove the eight 5mm hexagon 2.0 screws on the front panel.
- ⓘ Make sure the device is turned off before starting.

Step 2



- Lift the front panel off of the speaker using a plastic opening tool.

Step 3



- Placing the device with the back panel facing up, remove the eight 5mm hexagon 2.0 screws from the back panel.

Step 4



- Lift the back panel off of the device with a plastic opening tool.

Step 5



- Turning the device on its side, unscrew the four 15mm hexagon 2.0 screws on the charging port panel.

Step 6



- Remove the outer rubber flap and the plastic side port panel.

Step 7



- Place the device on its front.
 - Loosen the four 12mm Phillips screws in the four corners with a J1 screwdriver.
 - Loosen the two 8mm Phillips screws in the center with a J1 screwdriver.
- i** These screws are difficult to reach and will require a screwdriver extension piece.

Step 8



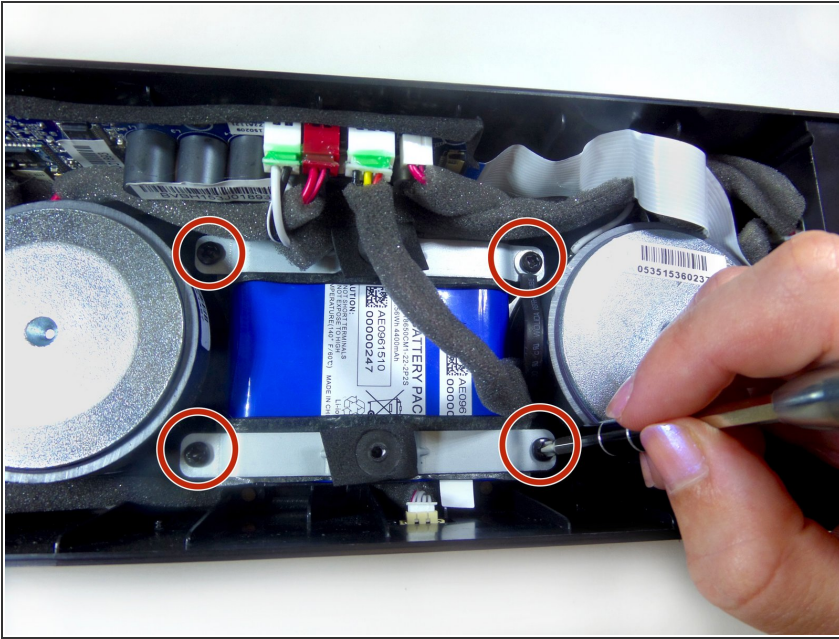
- Pull off the rubber sleeve surrounding the speaker using your hands.
- ⓘ There is adhesive binding the sleeve to the speaker and force will be required to remove the sleeve.

Step 9



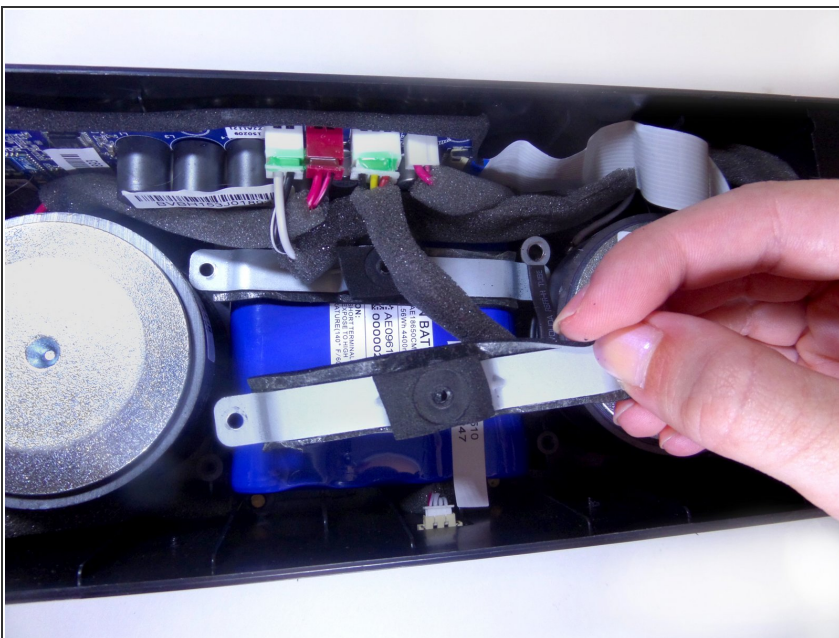
- Lift the black covering off of the speaker using both hands.
- ⓘ Loose screws that you were unable to remove with the screwdriver will be removed when you lift off the black covering.

Step 10



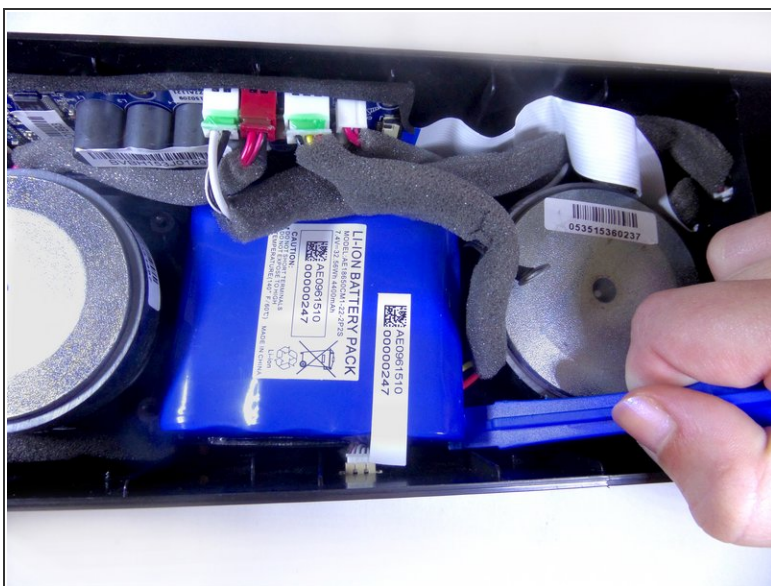
- Remove the four 12mm Phillips screws securing the two battery brackets with a J1 screwdriver.
- ⓘ Move any wires aside to have better access to the screws securing the battery.

Step 11



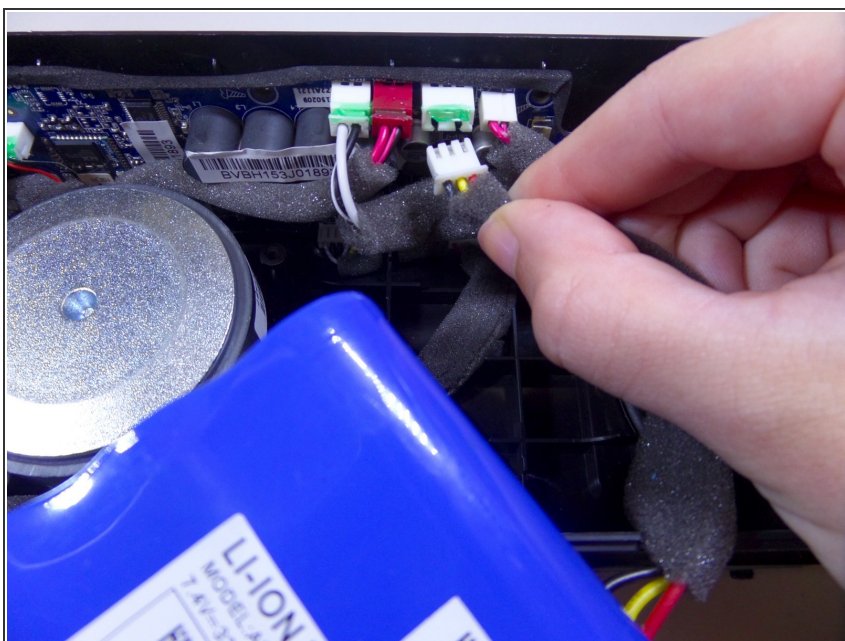
- Remove the two brackets that hold down the battery using your hands.

Step 12



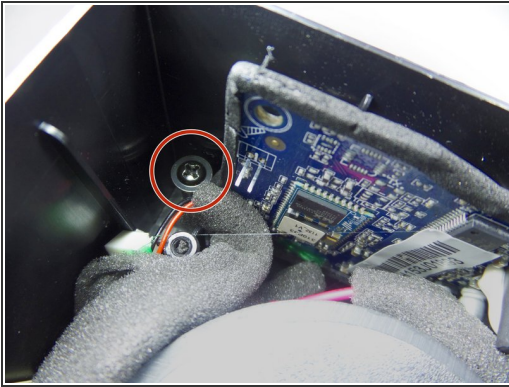
- Use the plastic opening tool to lift up the battery.
 - Remove the battery using your hands.
- i** The wires connecting the battery to the motherboard are still plugged in. Avoid pulling on the battery or these wires may break.

Step 13



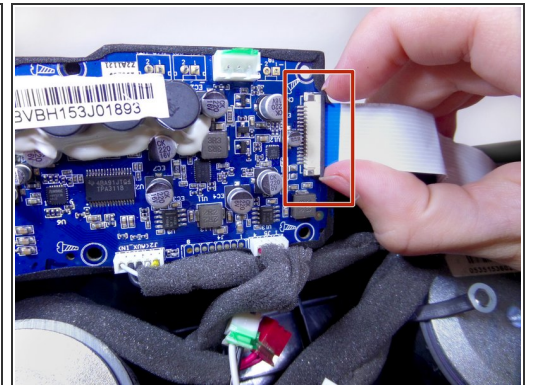
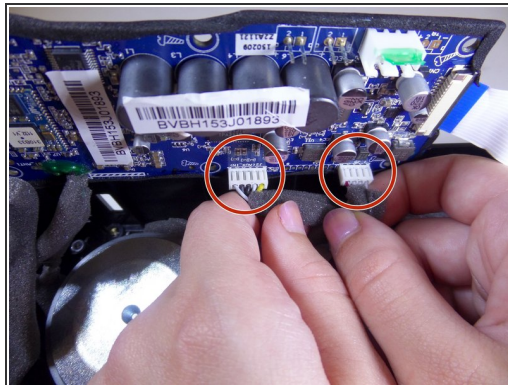
- Disconnect the wire attaching the battery to the motherboard.
- i** There is green glue on the wire ports preventing the wires from falling out. Peel and remove this glue as necessary.
- !** Be careful when pulling out the wires from their ports. The metal stems attached to the ports can break. A spudger or tweezers may help.

Step 14 — Motherboard



- Locating the two screws on either side of the motherboard, unscrew the two 8 mm Phillips head screws using a J1 Phillips head screw driver.

Step 15



- Slide out the motherboard using your hands.
 - Unplug all the wires attaching the motherboard to the device.
 - Remove and replace motherboard.
- i** Some wires are glued to the motherboard with a green glue. Remove the glue before removing the wires.

To reassemble your device, follow these instructions in reverse order.