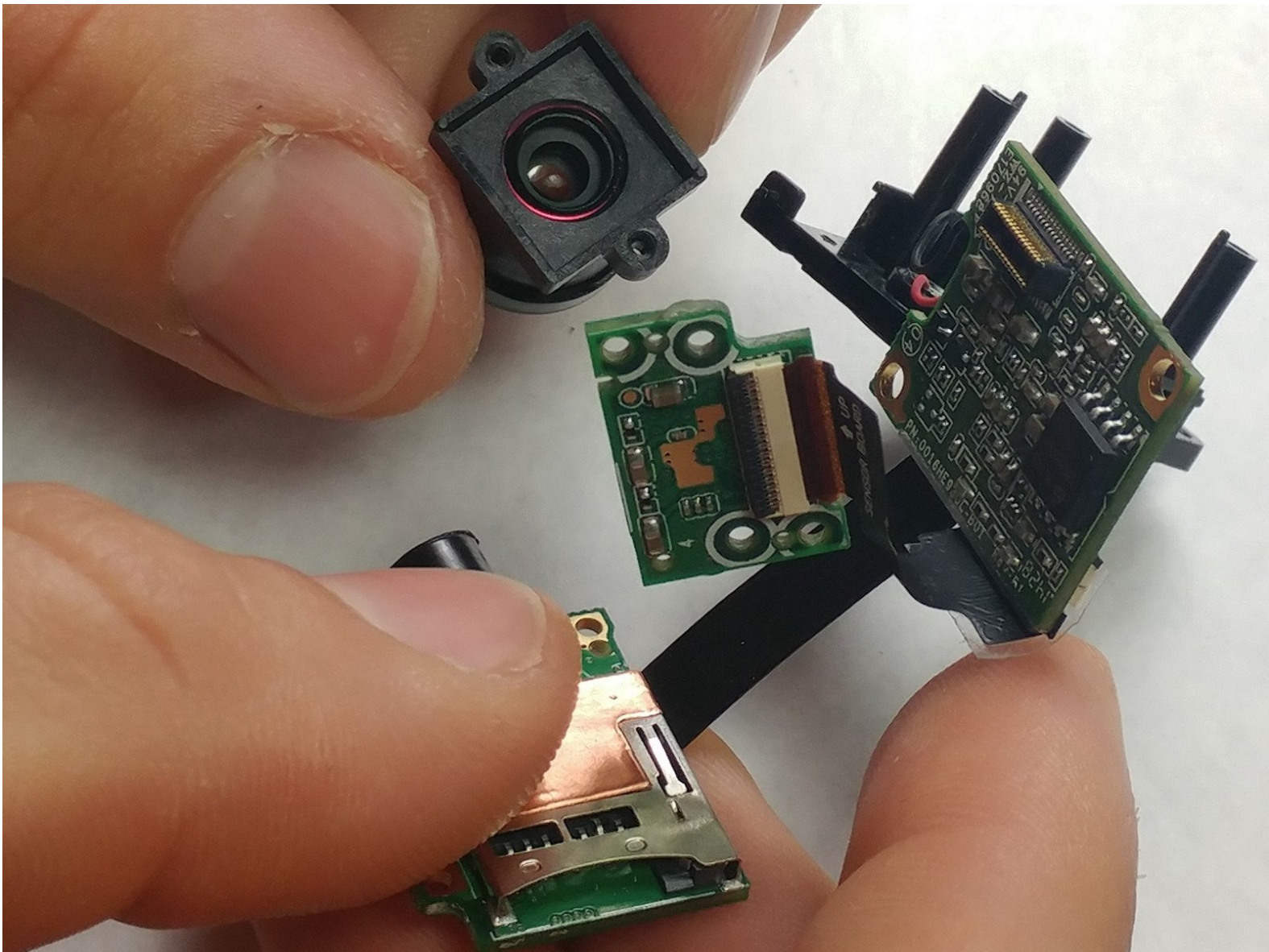




Polaroid Cube Lens Replacement

Is your Polaroid Cube Lens cracked or damaged? This guide will show you how to replace it.

Written By: Grant Baldwin



INTRODUCTION

This guide provides a great explanation about how to replace the lens of the Polaroid cube.

Due to the thickness and width of the screws, make sure to carefully remove them using a screwdriver and a magnet pad.



TOOLS:

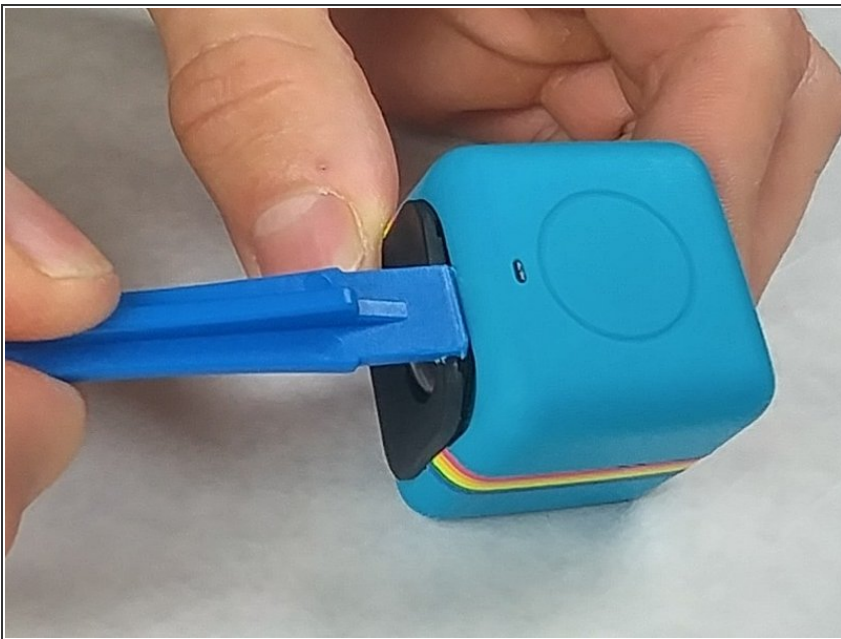
- [JIS Driver Set](#) (1)
 - [iFixit Opening Tools](#) (1)
-

Step 1 — Battery



- Remove the SD card cover by twisting it using a Plastic Opening Tool

Step 2



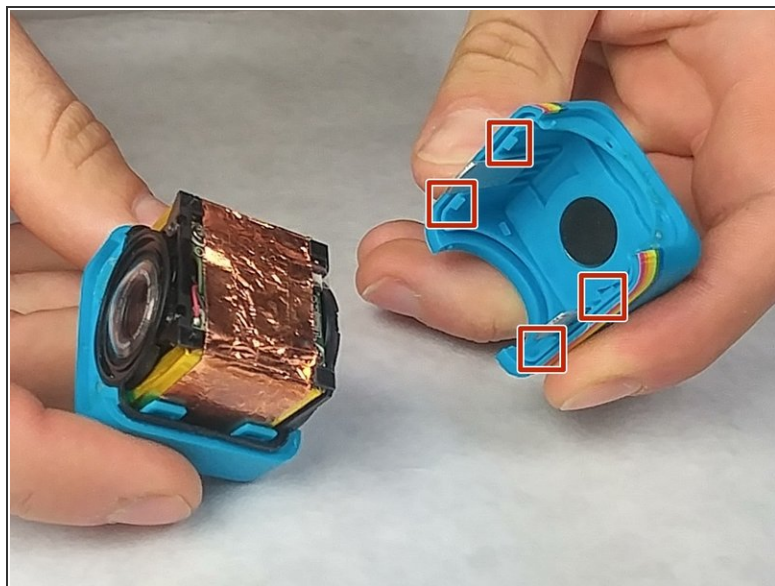
- Use the Plastic Opening tool to pry off and remove the front cover.

Step 3



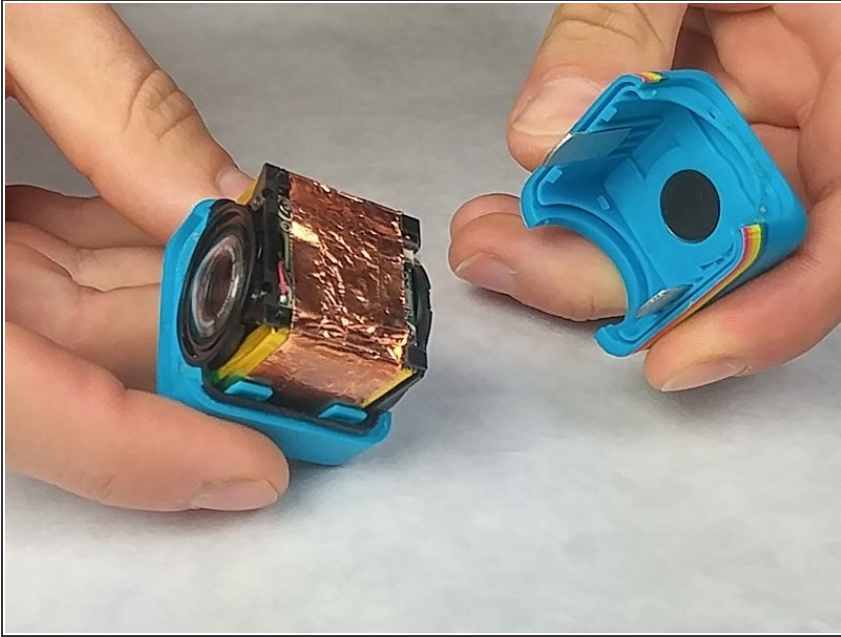
- Using a J00 head screwdriver, remove the four 3.27mm screws from the front of the camera near the lens.

Step 4



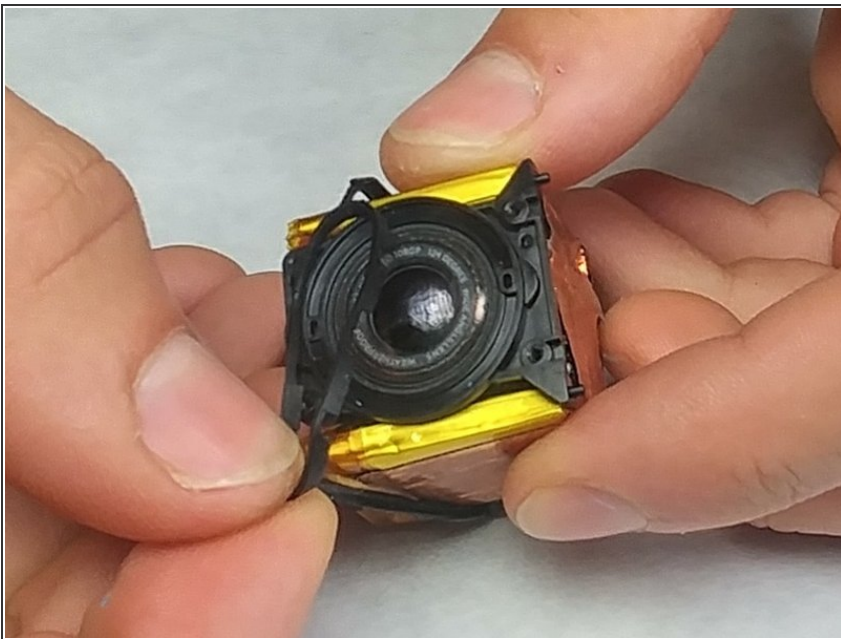
- Use the Plastic Opening Tool to pry open the shell of the camera.
- There are four latches, one at each corner, that you will need to detach.

Step 5



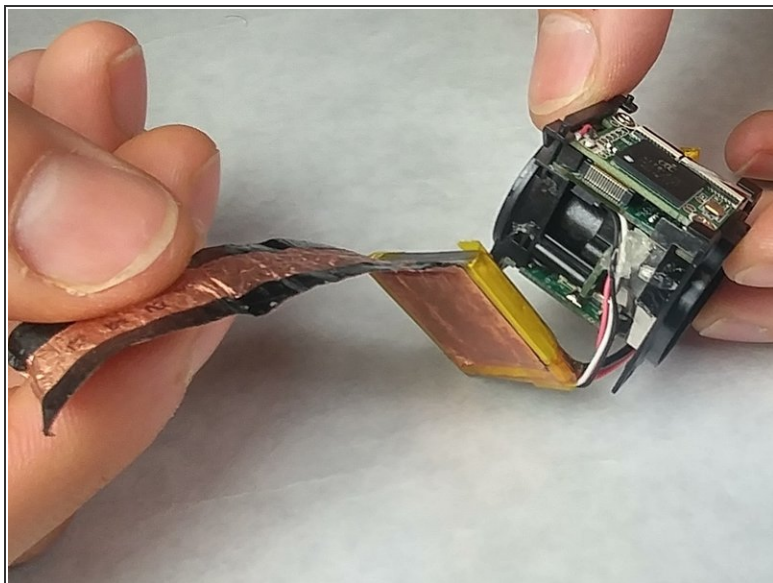
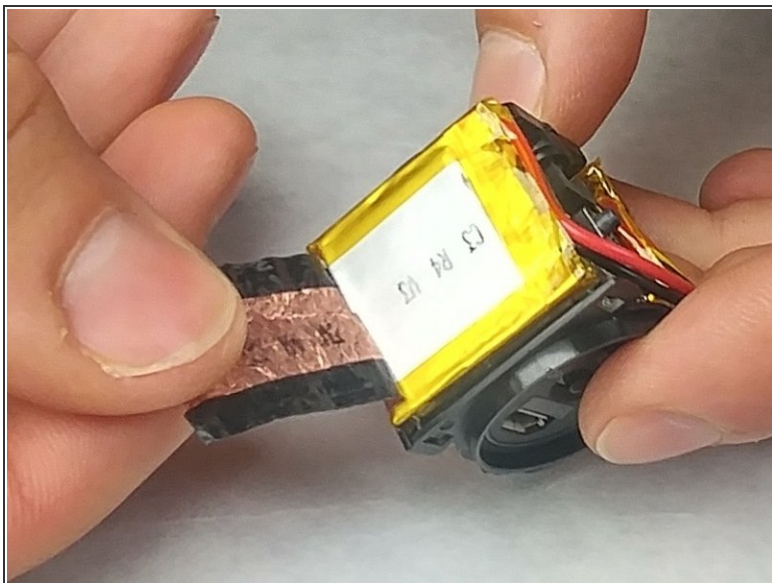
- Remove shell from top and bottom of camera.

Step 6



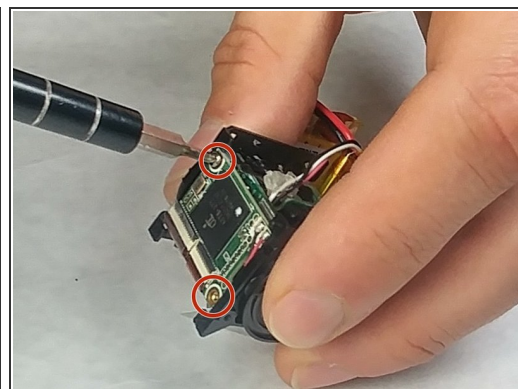
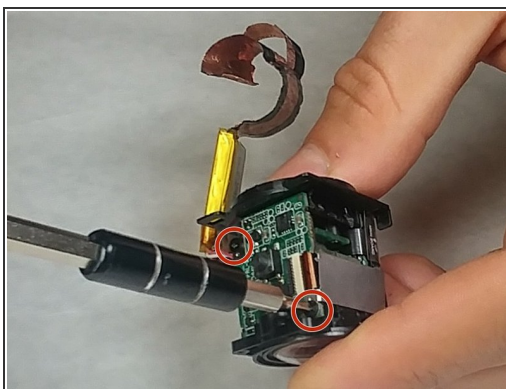
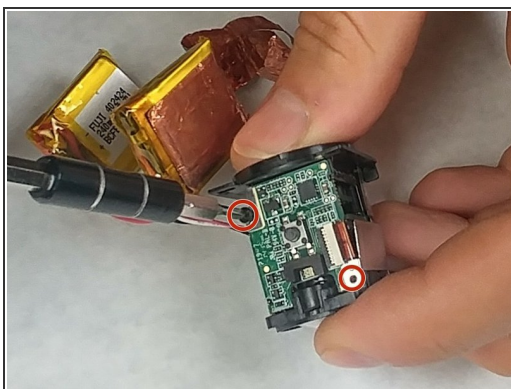
- Remove the rubber seal wrapped around the camera.

Step 7



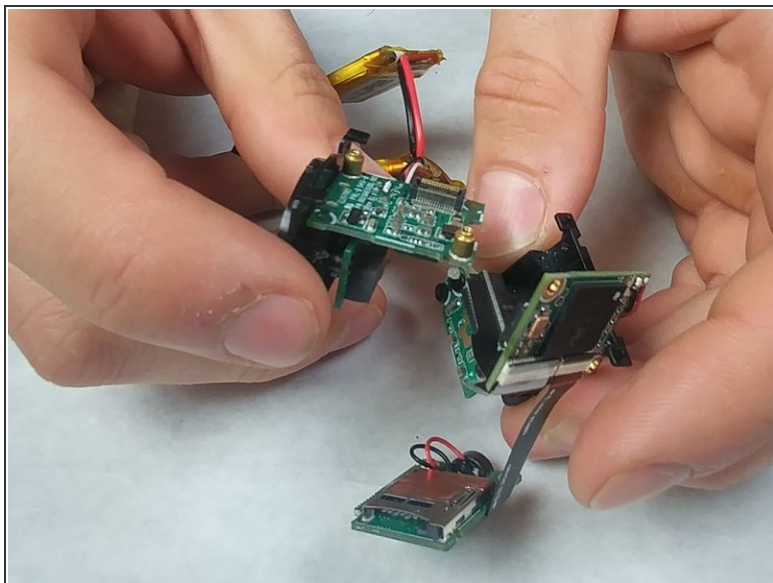
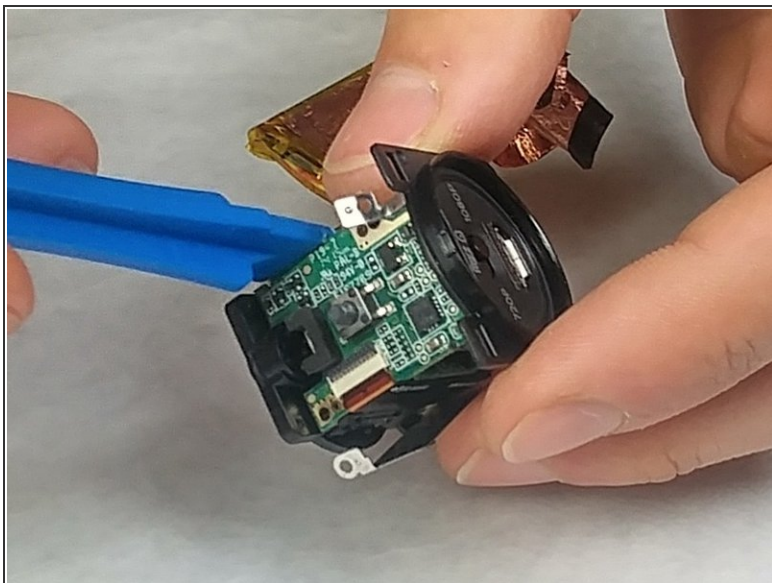
- Remove the tape wrapped around the battery.

Step 8



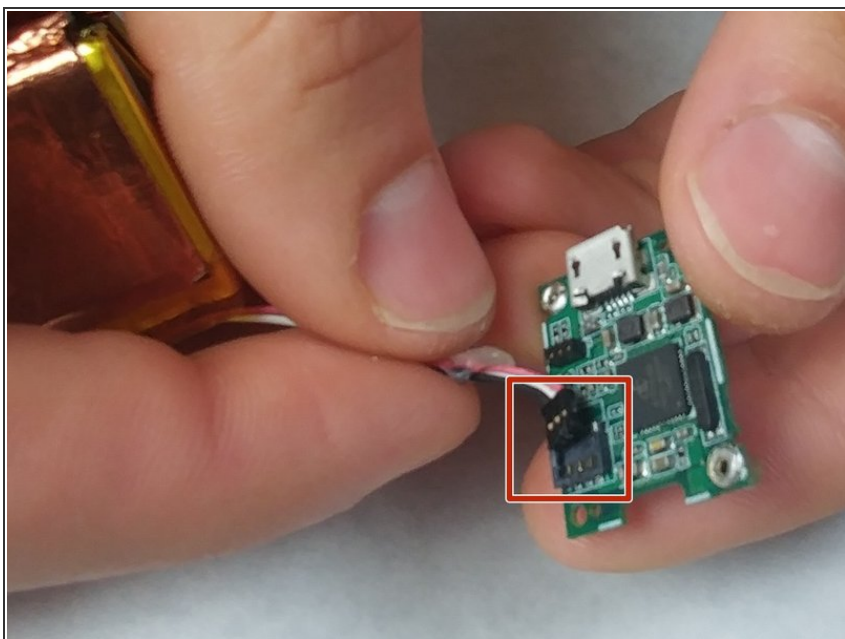
- Using a J00 head screwdriver, unscrew the four 3.46mm screws from the top and bottom circuit board.

Step 9



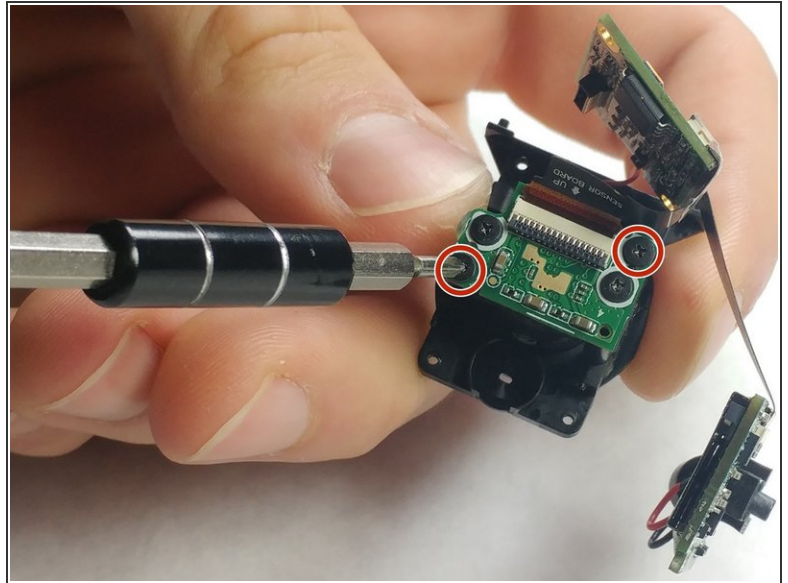
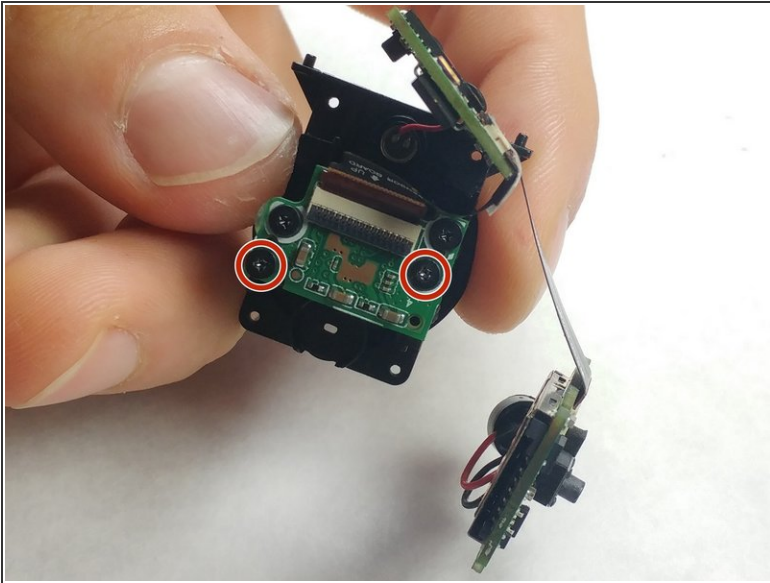
- Use the plastic opening tool to remove the circuit board that the battery is connected to.

Step 10



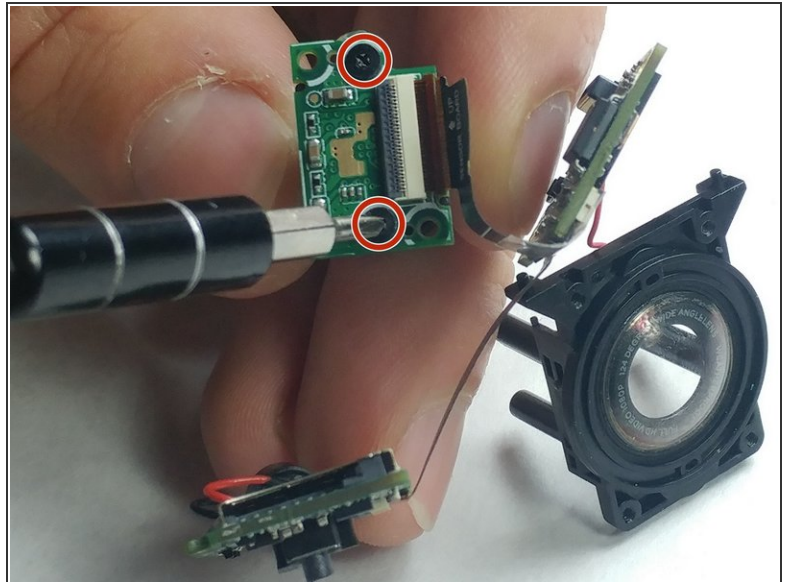
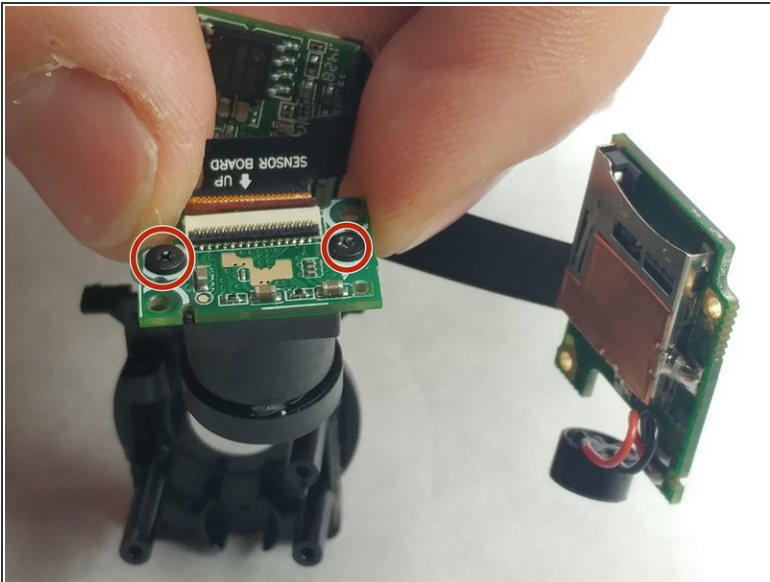
- Gently remove the battery pin connector from the circuit board.

Step 11 — Lens



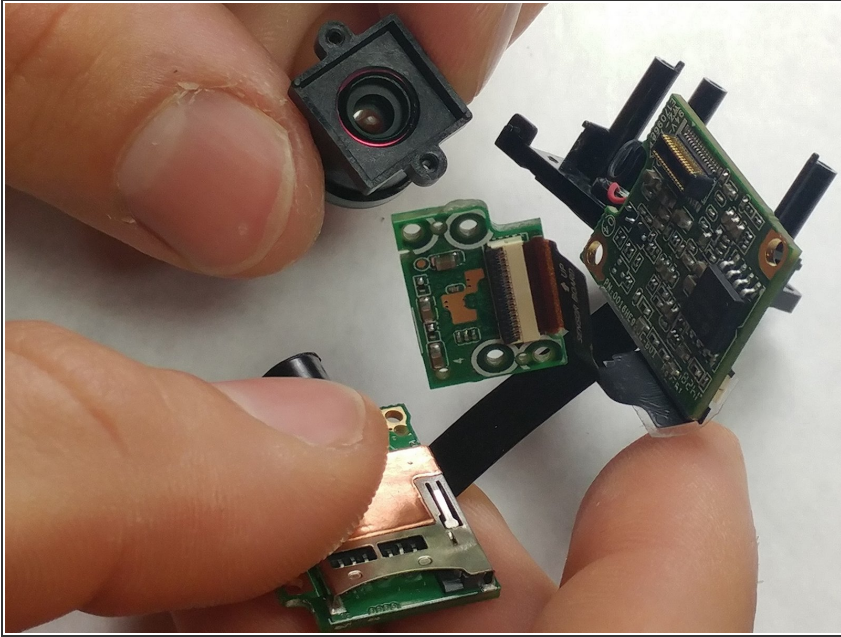
- Use a J00 screwdriver to unscrew the two circled 3.5mm Phillips-head screws from the circuit board.

Step 12



- Use a J00 head screwdriver to unscrew the two 3.5mm screws from the circuit board.

Step 13



- Remove the lens from the unscrewed circuit board and replace the broken lens.

To reassemble your device, follow these instructions in reverse order.