



Shark Rocket HV301 Fan Replacement

This guide will give you the necessary steps to access the fan of the vacuum.

Written By: Christian



INTRODUCTION

The fan is one of the most vital parts of the vacuum's functionality. Should the fan chip or break, the vacuum will not be able to perform to full capabilities. This guide will help you access the fan to replace.



TOOLS:

- [Phillips #2 Screwdriver](#) (1)
-

Step 1 — Fan



- Locate the orange panel at the top of the vacuum.
- Remove the orange panel by pressing down on the button below the panel.
- Pinch and pull away the engine filter to expose the inner chamber.

Step 2



- Place the vacuum on the ground with the filter side away from you.
- Use a Phillips #2 screwdriver to remove the four screws on the gray panel.


Step 3



- Place the vacuum on its side and locate the orange clips that say "Rocket" on each side of the vacuum.
- Remove the orange clips on each side by pulling them off their hinges.

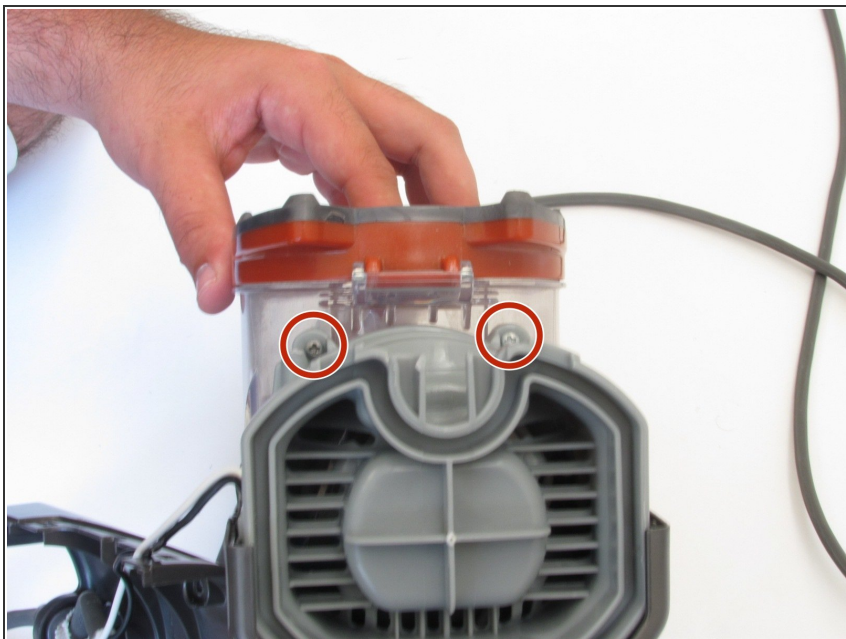
Step 4



 Removing the gray panel reveals the wiring to the fan and motor, be careful not to pull too hard on the wires to break or disrupt them.

- Remove the top half of the gray panel to reveal the light gray fan compartment.

Step 5



- Locate two screws above the fan compartment and remove the screws with a Phillips #2 screwdriver.

Step 6



- Remove the fan compartment by carefully pulling it away from the bottom half of the gray panel.

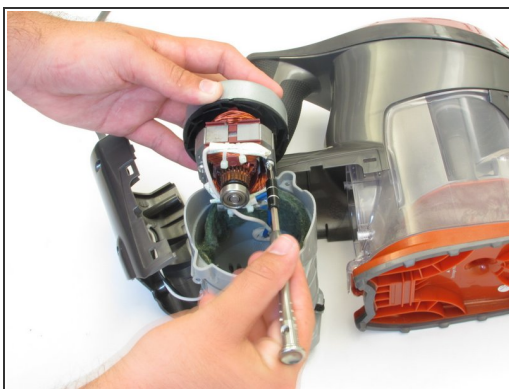
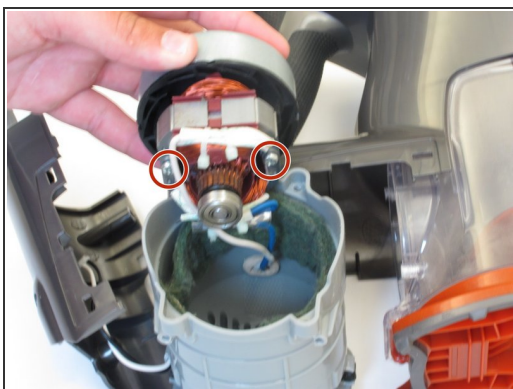
⚠ Do not pull out or remove any wires.

Step 7



- Pull the fan out of the compartment by pulling gently on the metal ring.

Step 8



- Locate the two long screws holding the fan together and remove the screws with a Phillips #2 screwdriver.

Step 9



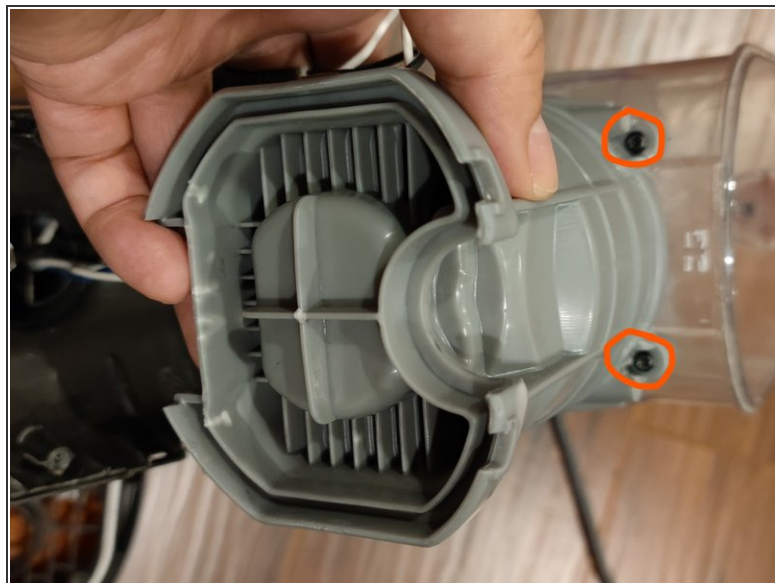
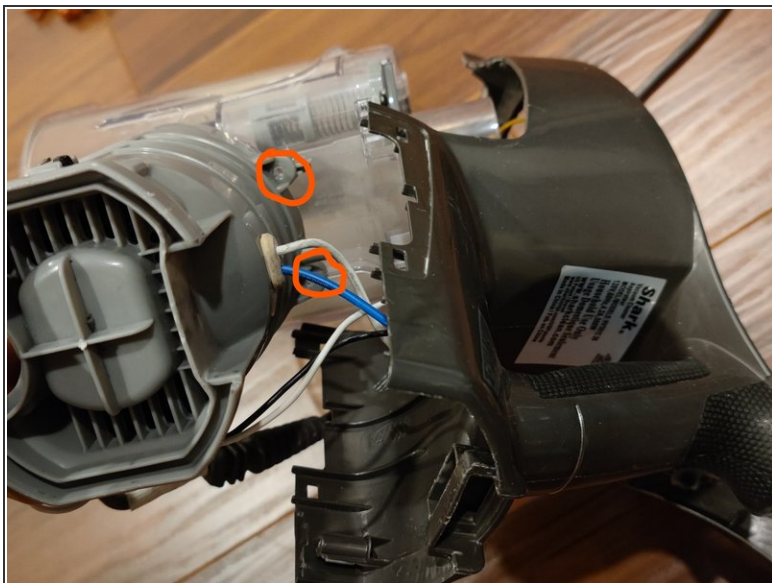
- Remove the rubber ring from the top of the fan compartment.

Step 10



- Remove the fan from the plate once the screws are removed by pulling gently.
- The fan can be removed from the motor by unscrewing the bolt using a socket wrench. The bolt is inside the fan.

Step 11



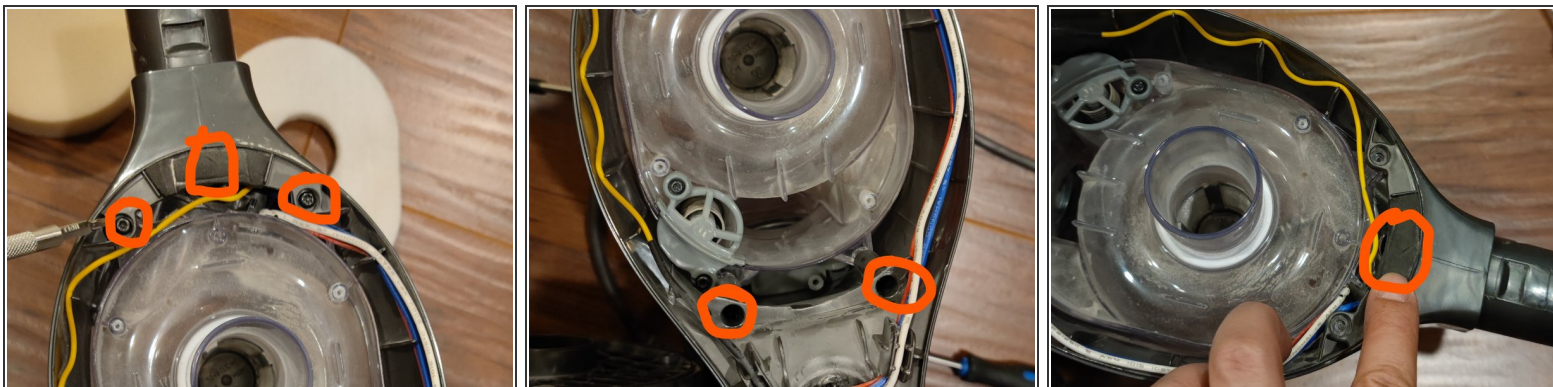
- 4 screws(top 2 bottom 2) to hold the motor/fan assembly
- In order to reach the bottom two, you need to remove 2 major parts: 1. switch and lid covers the filter; 2. dust container

Step 12



- 5 screws to remove the switch and lid that covers the foam filter

Step 13



- Dust container, 5 screws. One under a foam sticker, peel the sticker to reach the screw.
- The last photo is a highlight of the one under the foam sticker.

Step 14



- Additional images for the one screw under the switch.

To reassemble your device, follow these instructions in reverse order.