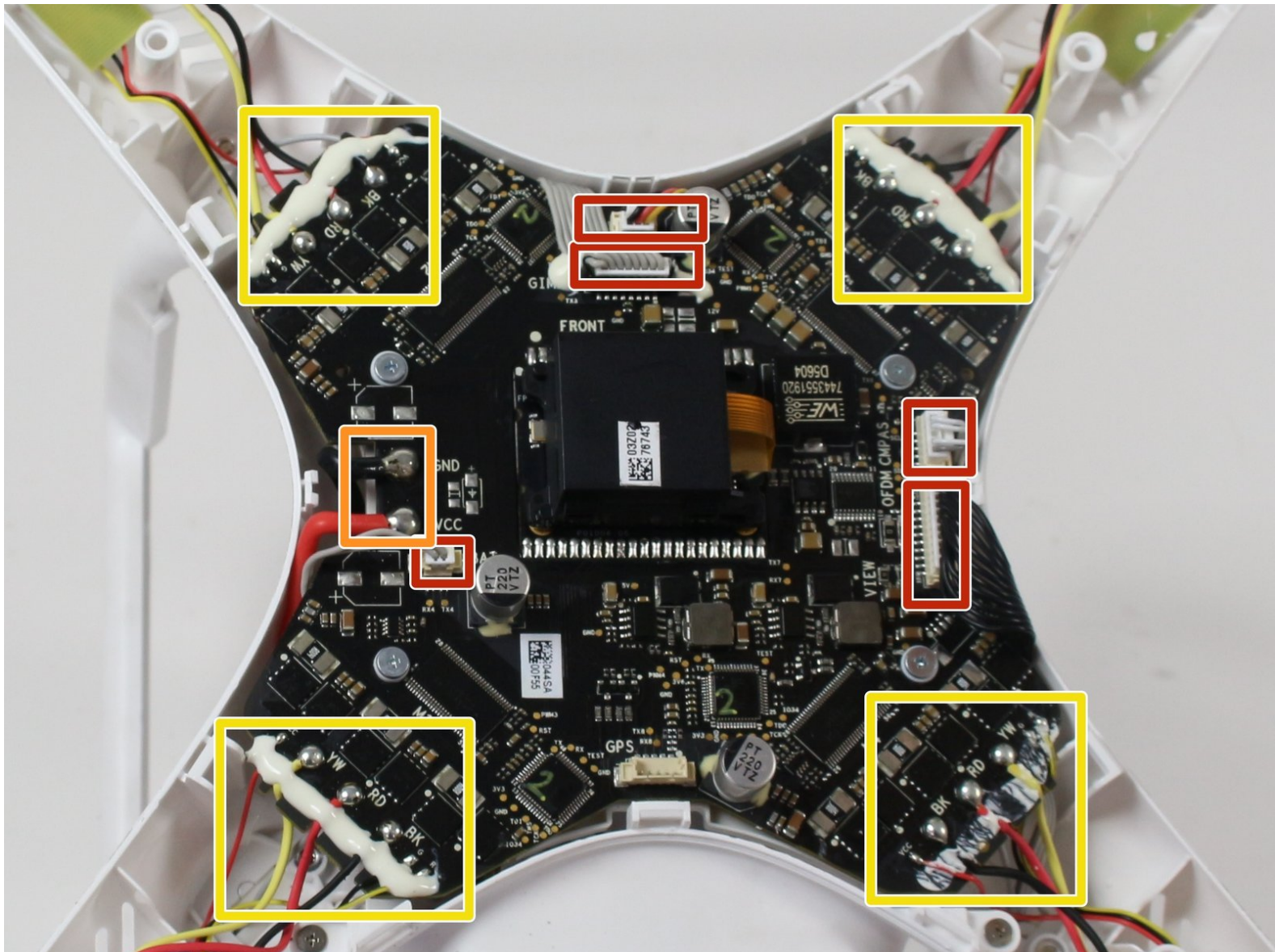




# DJI Phantom 3 Advanced Flight Controller Replacement

This guide shows how to remove the flight controller of the DJI Phantom 3 Advanced.

Written By: Robert Comstock



## INTRODUCTION

This guide will show the steps needed to remove the flight controller. In order to remove the flight controller, the cover will have to be removed first. Removing the flight controller will require disconnecting the wire connections on it.



### TOOLS:

- [T8 Torx Screwdriver](#) (1)
  - [T6 Torx Screwdriver](#) (1)
  - [Heavy-Duty Spudger](#) (1)
  - [Phillips #00 Screwdriver](#) (1)
  - [Soldering Iron](#) (1)
  - [iFixit Opening Tools](#) (1)
-

## Step 1 — Battery



- With the battery facing you, locate the two tabs on the top and bottom of the battery as shown.

⚠ Remember to disarm and power down your quadcopter before beginning any disassembly.

## Step 2



- Press the two tabs with your finger and thumb, and gently slide the battery towards you, out of the quadcopter frame.
- With your other hand, be sure to hold the quadcopter steady to ensure that it stays still.

## Step 3 — Cover



- Turn the Phantom 3 Advanced upside down.



## Step 4



- Remove the four 7mm long 2mm screws with a T-6 screwdriver.
- ⓘ There is one screw per arm, located at the tip of the arm.

## Step 5



- Remove the eight 5mm long 2.5mm screws using the T-8 screwdriver.

- ⓘ There are two 5mm screws on each arm.

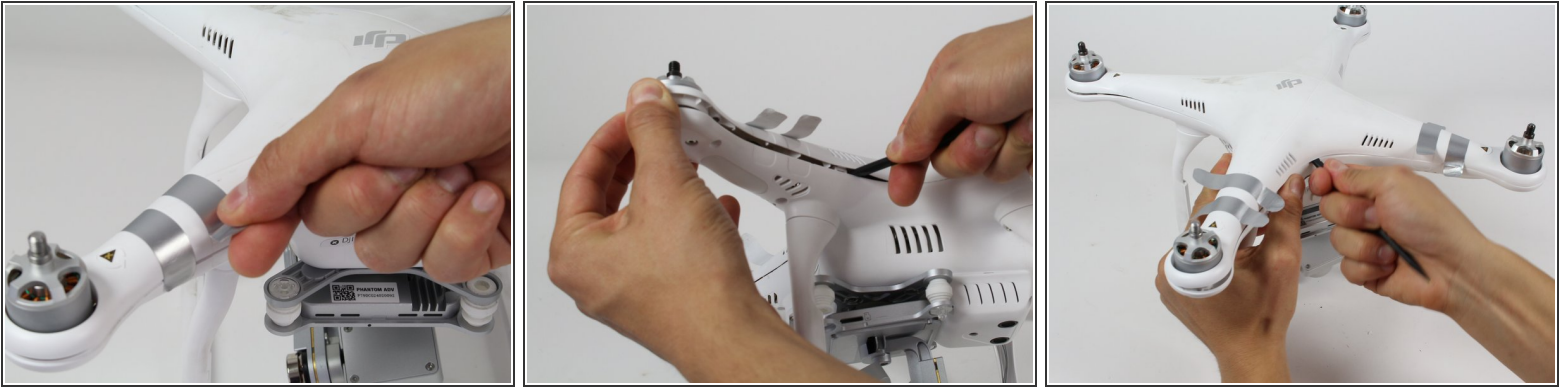
## Step 6





- Remove the four 10mm long deep 3mm screws using the T-8 screwdriver.

**i** There is one screw on each arm located near the landing gear.

## Step 7



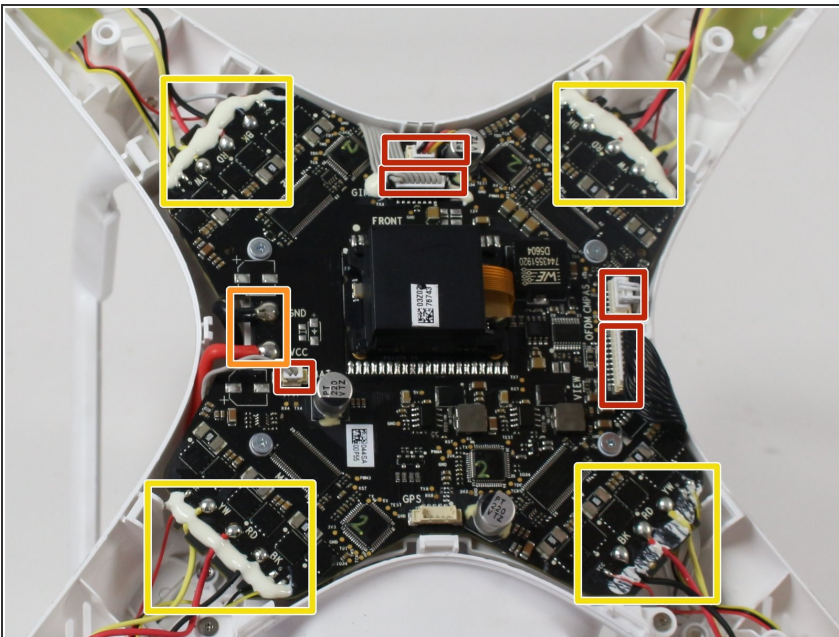
- Carefully flip the phantom back over with the motors facing up.
  - Peel back the silver stickers from the seam in the cover.
  - Using a plastic spudger, slowly separate the two halves of the plastic shell.
-  This step requires some force, and the plastic will click loudly as the shell separates.
-  Do not fully remove the cover. There is a wire that needs to be detached from the control board before the cover is completely free.

## Step 8



- Slowly remove the upper half of the plastic case about halfway. There is a ribbon cable that's connects the cover and the control board.
- Follow the ribbon cable to the control board and locate the connector that connects the cable to the control board.
- Press the tab on the side of the connector and pull up on the cable.
- Continue to remove the shell the rest of the way.

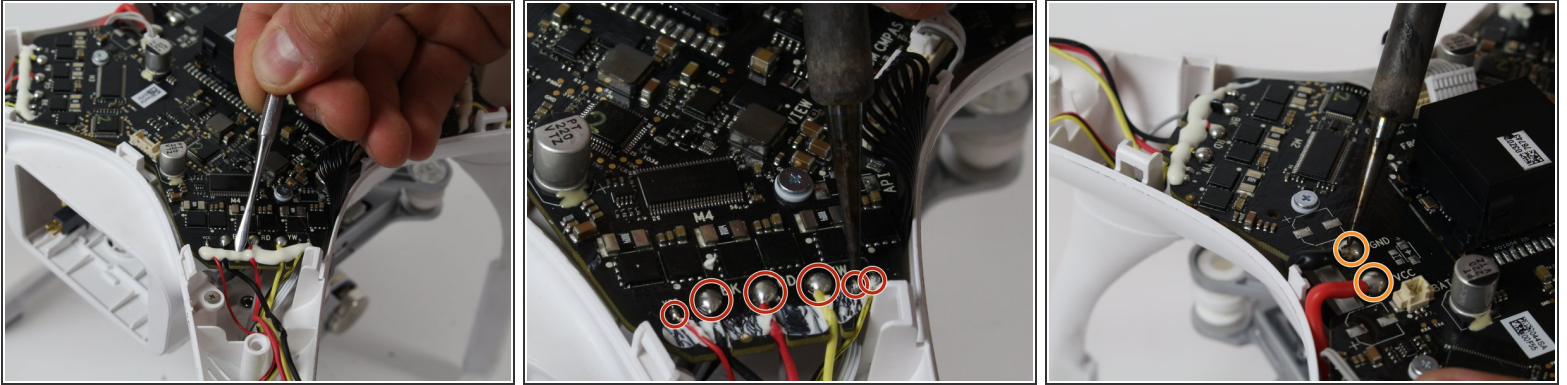
## Step 9 — Flight Controller



- Locate the five ribbon cables that need to be disconnected from the control board.
- Locate the red and black battery wires.
- Follow the three wires from each motor and the three wires from each LED to where they connect on the control board.

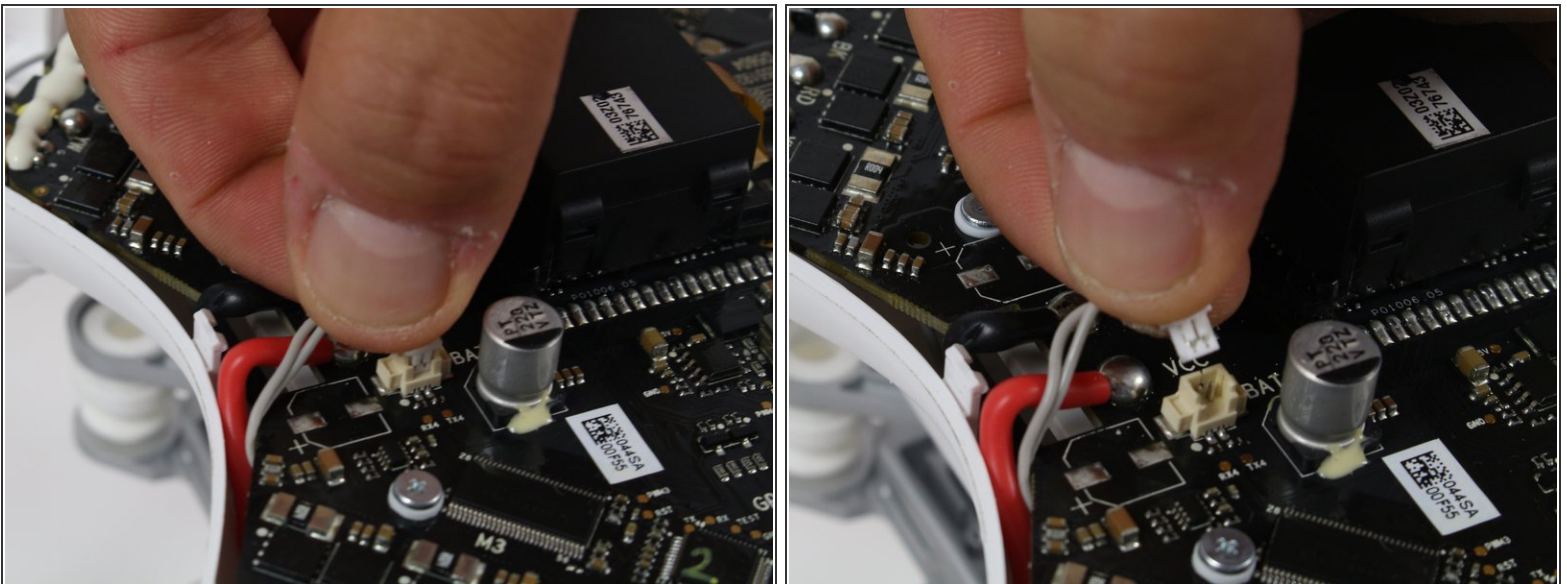


## Step 10



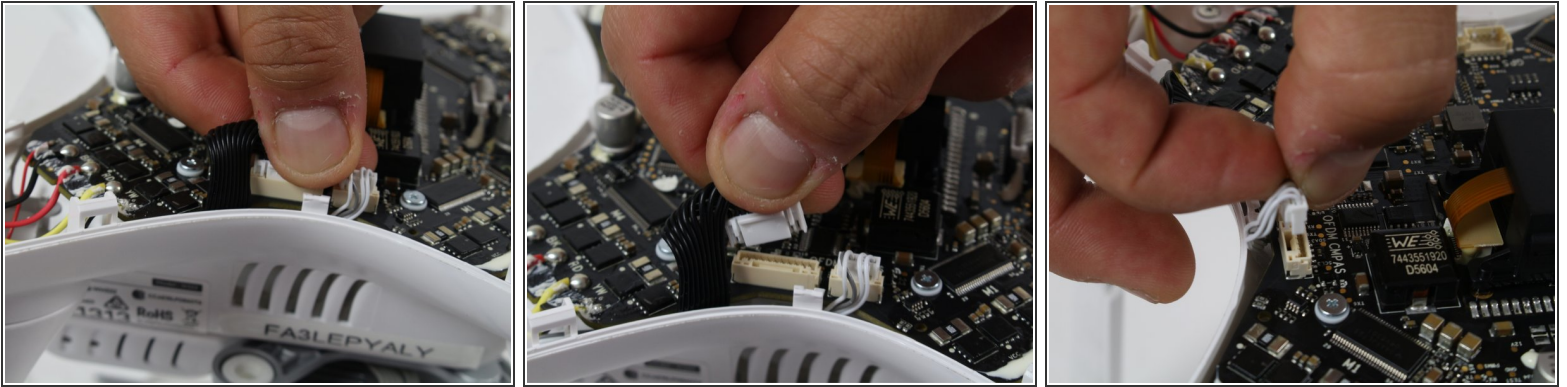
- Use a plastic opening tool to remove the glue that covers the motor and LED wires. Use a metal opening tool if necessary.
- Desolder the six motor and LED wires where they connect on the flight controller for each arm. Refer to the [Desoldering Guide](#) on how to desolder.
- Desolder the battery wires.

## Step 11



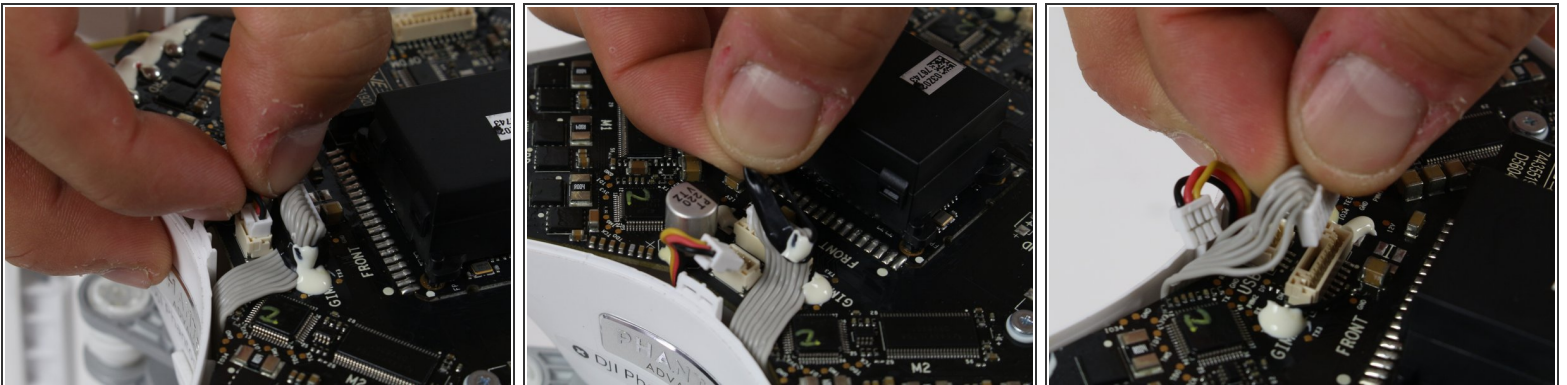
- Remove the cable next to where the battery wires were connected. Pinch and hold the top of the connector, then pull it out.

## Step 12



- Remove the black ribbon cable and the 3-wire cable next to it. Press the small tab on the ribbon cable connector and pull it out.

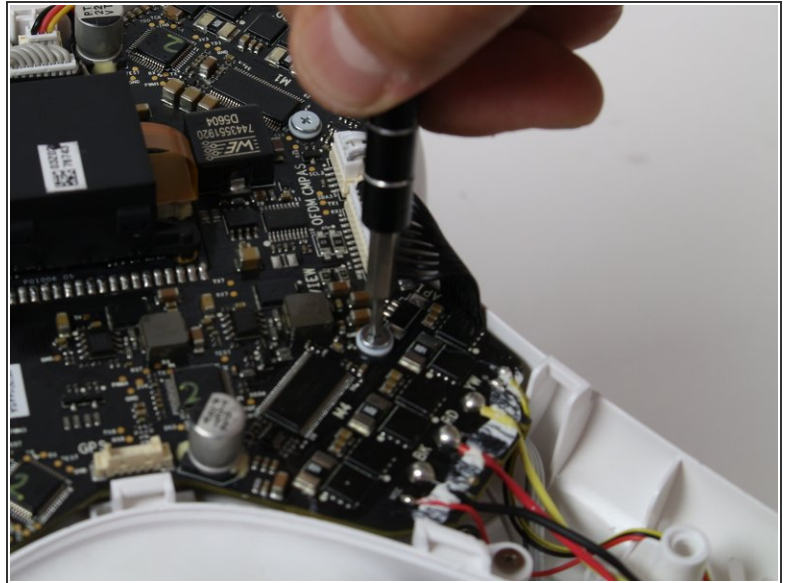
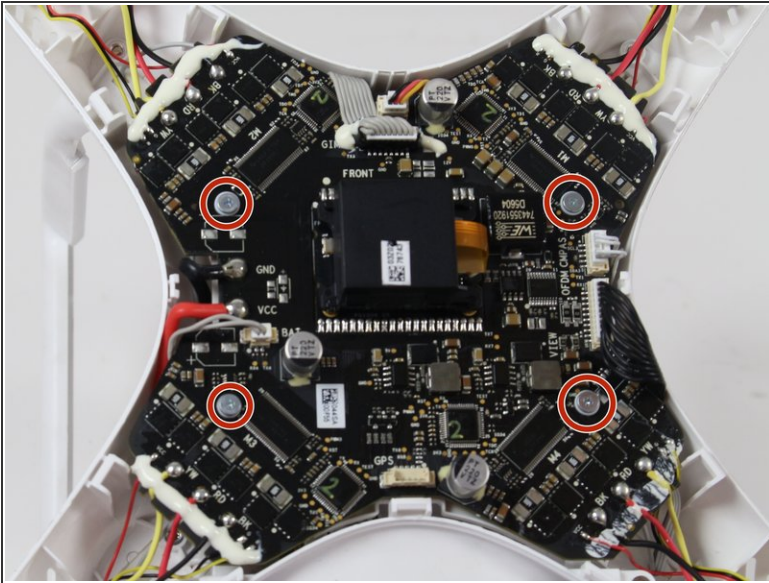
## Step 13



- Locate the ribbon cable that is next to the word "Front" on the flight controller.
- Remove the small cable next to the ribbon cable by pinching on the side tab and pulling up on the connector. It has black, red and yellow wires.
- Remove the black band from the ribbon cable.
- Remove the ribbon cable by pinching on the side tab and pulling up on the connector.



## Step 14



- Remove the four 6.5mm long 2mm screws with a philips head 00 screwdriver.
- Remove the flight controller now by slowly pulling it off of the frame.

To reassemble your device, follow these instructions in reverse order.