



Nikon D3100 LCD Screen Replacement

If your Nikon D3100 LCD screen is cracked,...

Written By: Jet Mejia



INTRODUCTION

If your Nikon D3100 LCD screen is cracked, chipped, or flickering it may need to be replaced. Follow this guide to replace the LCD screen. But first take a look at this [troubleshooting page](#) to check if the problem is truly the LCD screen and not a setting issue.

TOOLS:

[Phillips #00 Screwdriver](#) (1)

[iFixit Opening Tool](#) (1)



[Tweezers](#) (1)

[Spudger](#) (1)

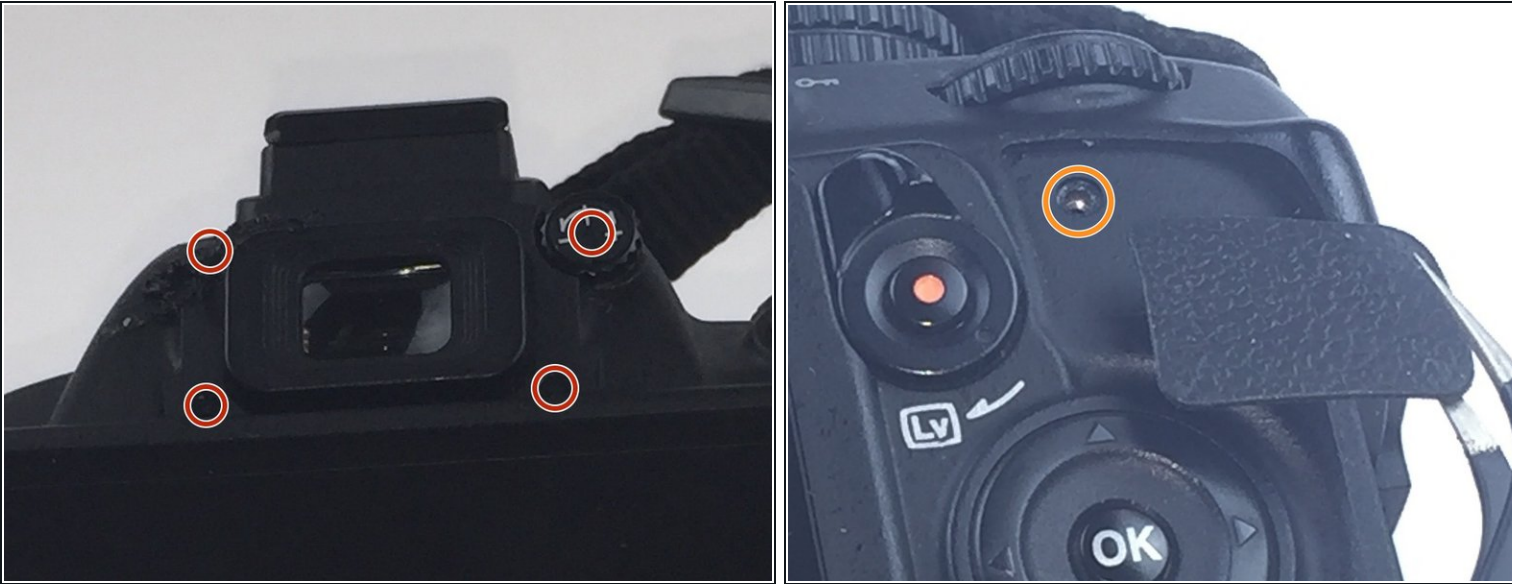
[Heating Pad \(optional\)](#) (1)

Step 1 — LCD Screen



-  Use a Phillips #00 screwdriver for all of the screws.
-  Remove two of the 4mm screws indicated by the circles on the bottom side of the camera.

Step 2



- Remove four of the 3mm screws around the eye piece located on the top of the back panel, including the screw hidden behind the auto focus label.
- Remove the 3mm screw behind the rubber grip on the top right of the back panel.

Step 3



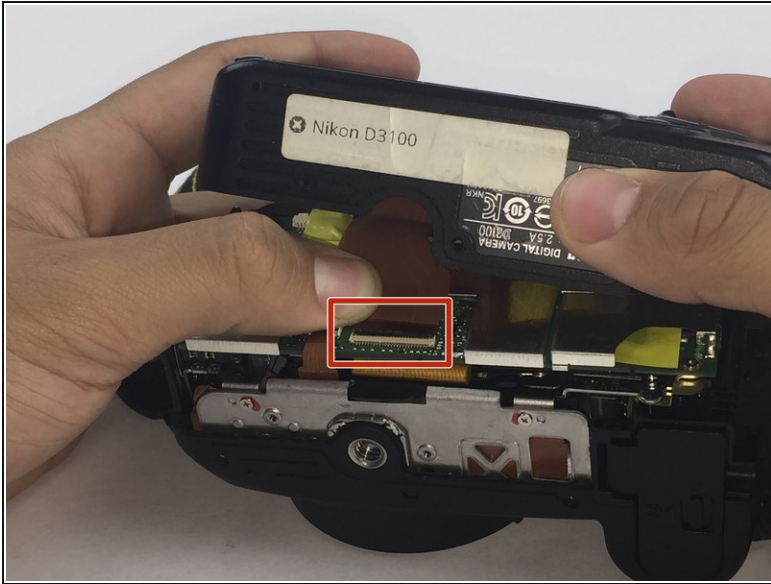
- Peel back the rubber grip on the right side of the camera using a spudger.
- ⚠ You may need a heating pad to melt the glue holding the rubber grip to the camera. If using the heating pad, use caution and handle carefully.
- Remove two of the 5mm screws under the rubber grip.

Step 4



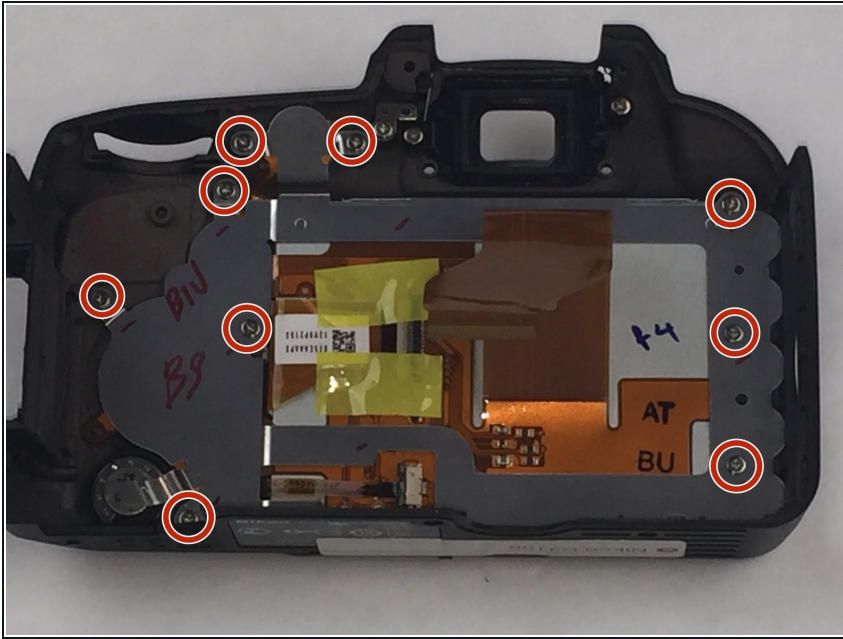
- Remove two of the 4mm screws on the left side of the camera.

Step 5



- Starting from the top, gently lift the back panel of the camera off. Slowly separate the back panel from the main body of the camera.
- ⚠ Be careful not to pull the panel out too fast or the ribbon may be damaged.
- Carefully remove the ribbon using a spudger to lift up the connector and then use tweezers to pull out the ribbon.
- Separate the back panel from the main body of the camera.

Step 6



⚠ Be careful when separating the metal plate from the back panel because the speaker wire is connected to the metal plate. It can easily be torn if caution is not taken.

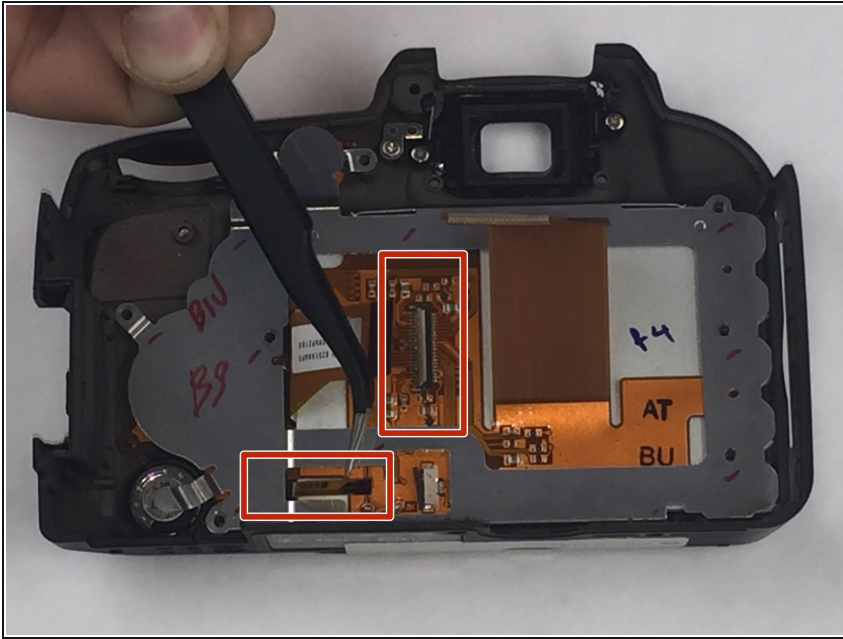
- Remove nine of the 3mm screws connecting the metal plate to the plastic panel.

Step 7



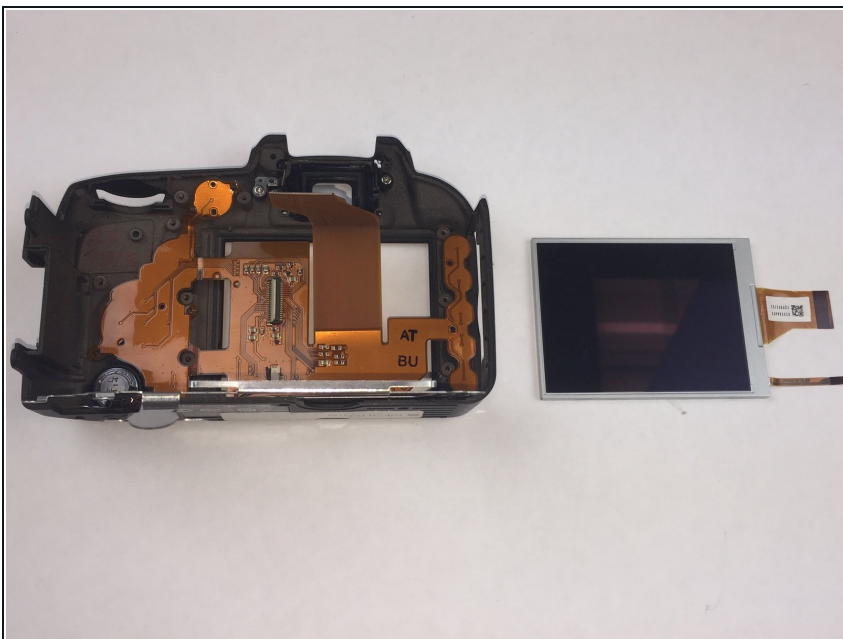
⚠ Remove the tape covering the ribbons. Be careful not to break the tape.

Step 8



- Remove the two ribbons connecting the LCD screen to the metal plate using the same method from Step 5.

Step 9



- Remove the old LCD screen from metal plate.

To reassemble your device, follow these instructions in reverse order.