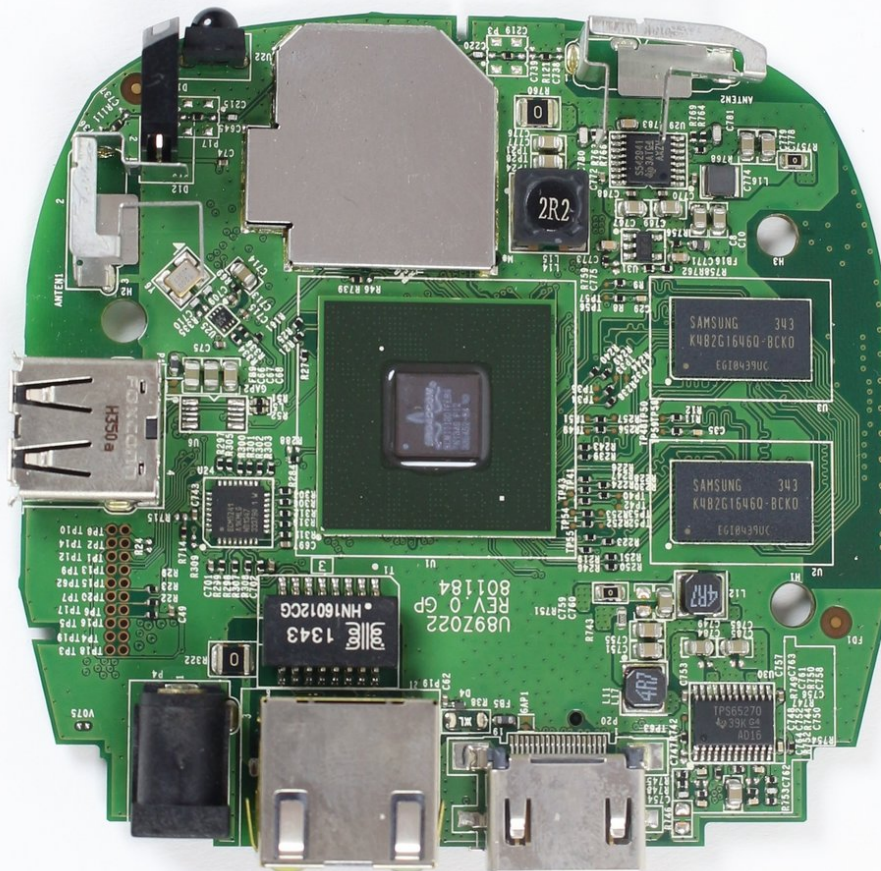




# Roku 3 Ethernet Port Replacement

Replace the Ethernet port to direct connect to the internet.

Written By: Andy Hak



## INTRODUCTION

The ethernet port serves as a temporary or permanent solution to connecting to the internet on a network that does not have WiFi. Follow this guide to replace your broken or faulty ethernet port.

---

### TOOLS:

- [Screwdriver Hex 1.3 Head](#) (1)
  - [Soldering Workstation](#) (1)
-

## Step 1 — Motherboard



- Place the Roku 3 on the table face down and orient it so you can correctly read the writing.

## Step 2



- Pull back the rubber protection in the top right corner to locate the screw.
- Repeat with the bottom right corner and bottom left corner.

## Step 3



- Remove the 9 mm screws from the three corners with a Hex 1.3 Screwdriver.

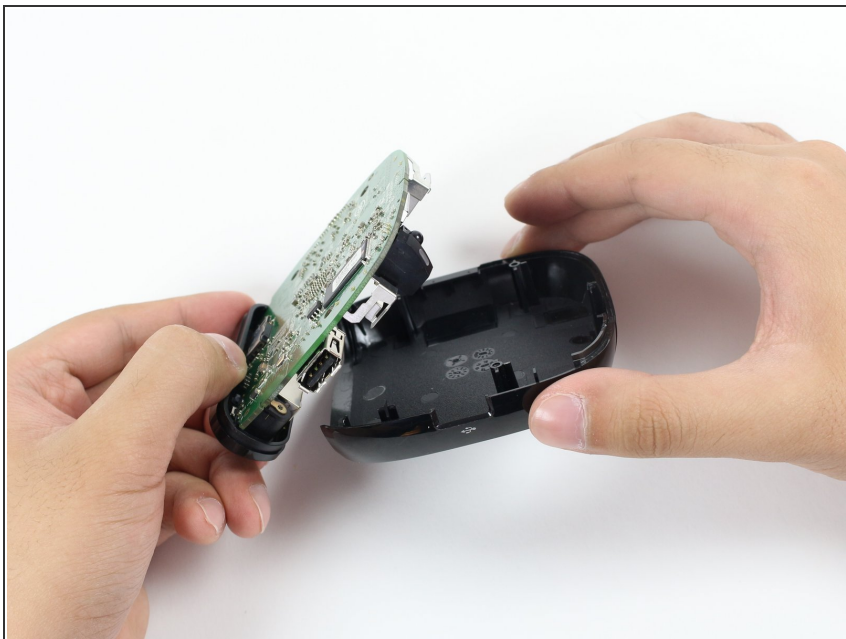
## Step 4



- Open the device by gently lifting the bottom half away from the top half of the device.

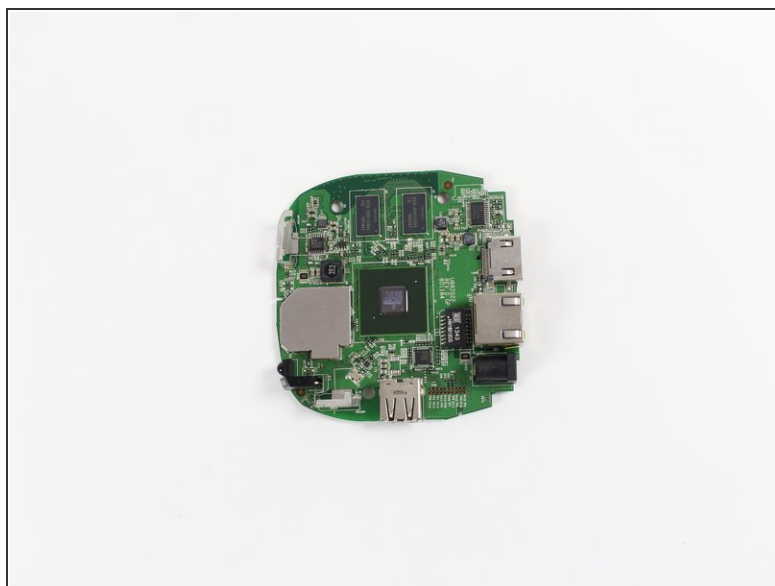
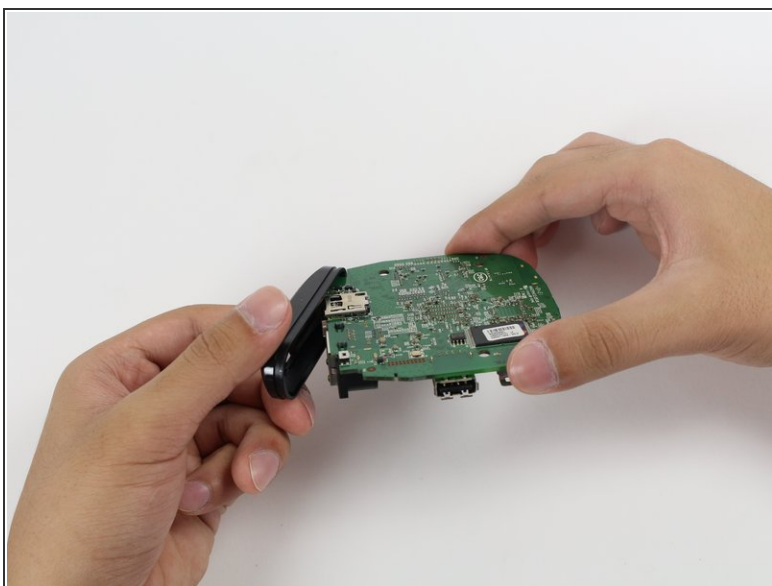


## Step 5



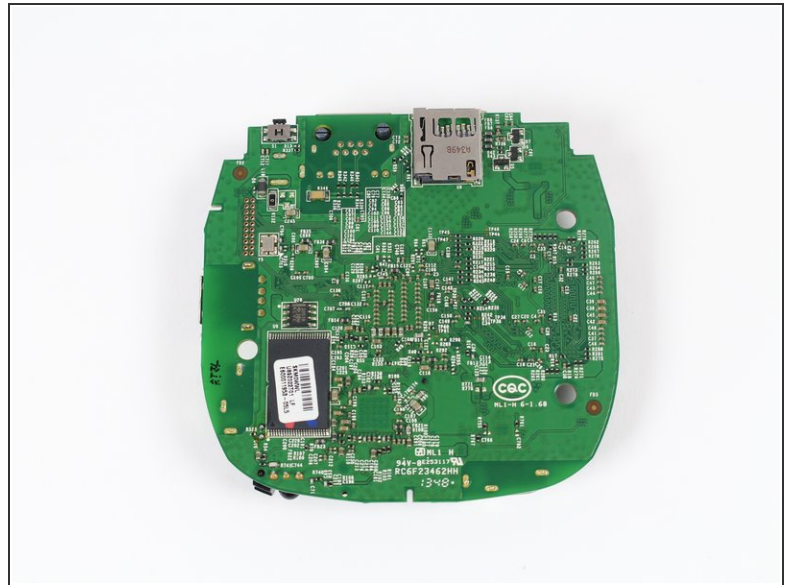
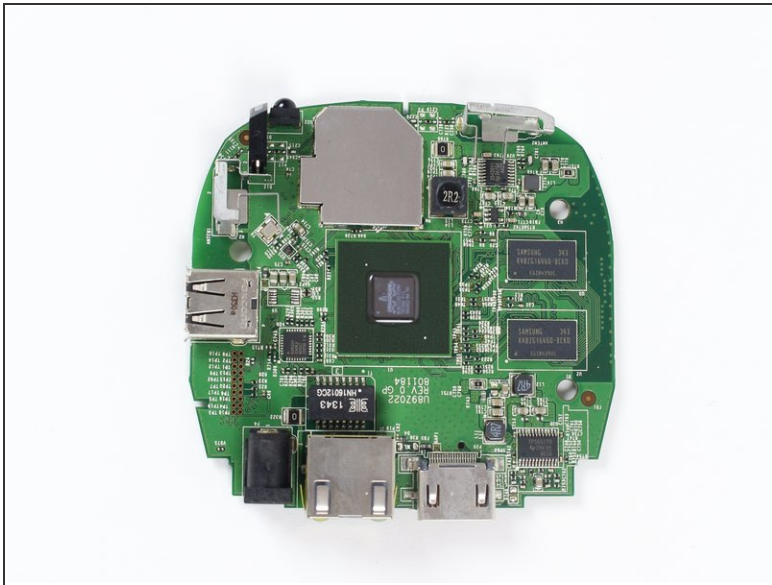
- Use your fingers to carefully lift the motherboard from the top half of the device.

## Step 6



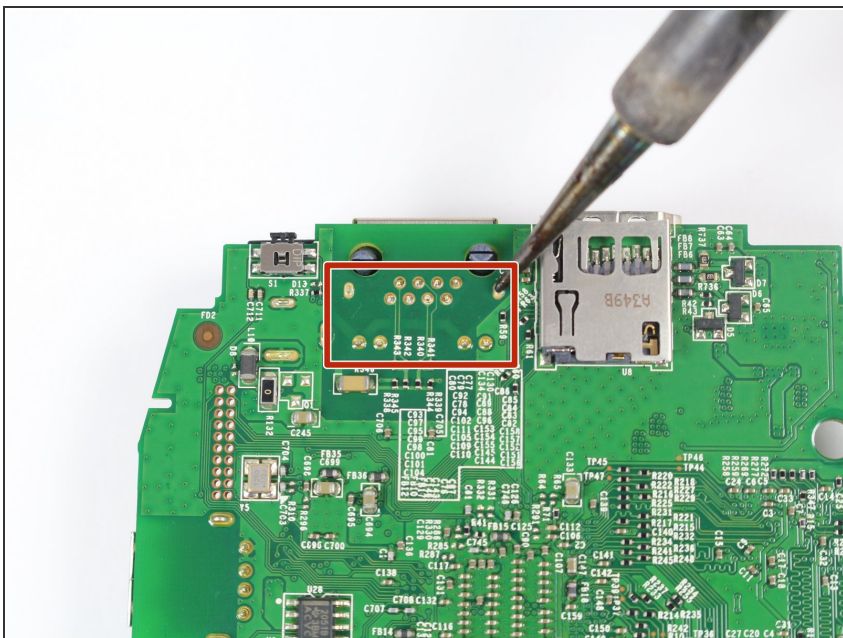
- Pull away the IO shield from the motherboard using your hands.

## Step 7 — Ethernet Port



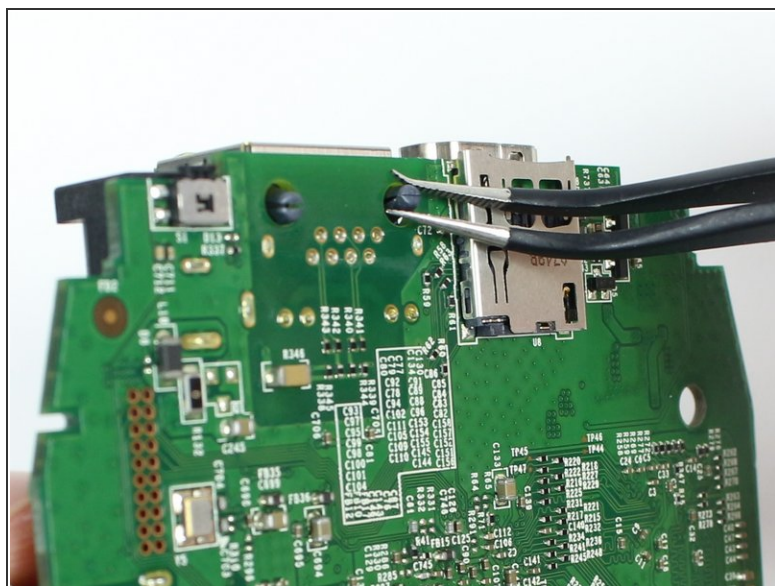
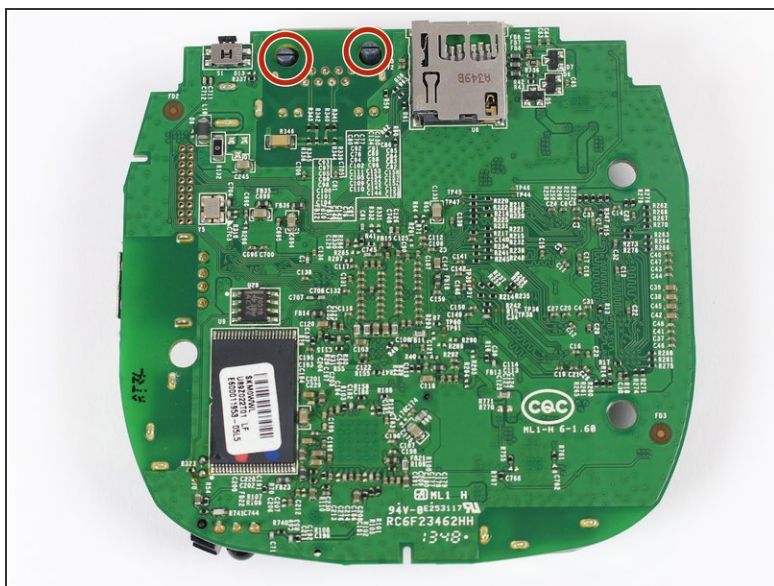
- Turn over the motherboard so the back is face up and almost all large silver components are resting facedown on the table.
- Orient it such that the backside of the HDMI port is in your upper right corner.

## Step 8



- Desolder all of the port's connections with a soldering iron.
- ① For more information on soldering, check out iFixit's [Soldering Guide](#).

## Step 9



- Locate the plastic push-throughs just to the left of the backside of the USB port.
- Pinch the plastic push-throughs. The port should now be able to be removed.

To reassemble your device, follow these instructions in reverse order.