



# Breville JE98XL Juice Fountain Plus Filter Basket Replacement

Replace the filter basket to maximize juice extraction.

Written By: Madison Burgess



---

## INTRODUCTION

You will be removing and disassembling the stainless steel filter basket for cleaning and/or replacement. To make the process easier, place the juicer in or over the sink before you begin.

**CAUTION:** the filter basket contains small blades to cut fruit and vegetables so avoid contact while handling the filter basket.



### TOOLS:

- [iFixit Opening Tools](#) (1)
  - [Phillips #1 Screwdriver](#) (1)
-

## Step 1 — Pulp Basket



- Place the juicer on a flat surface. Make sure the juicer is unplugged and in the "off" position. For the following steps, the pulp basket is on the left.

## Step 2



- Tilt the juicer slightly to the right so the pulp basket is off of your surface.

### Step 3



- Pull the pulp basket down and out from under the juicer cover.

### Step 4 — Lid



- Place one hand on either side of the safety locking arm.
- Disengage the locking mechanism by pulling down on the lever with even pressure. The lever should be free to move up or down once it has been properly disengaged.



## Step 5



- Firmly grip both sides of the juicer. Twist clock-wise and lift to remove the lid.

## Step 6 — Filter Basket



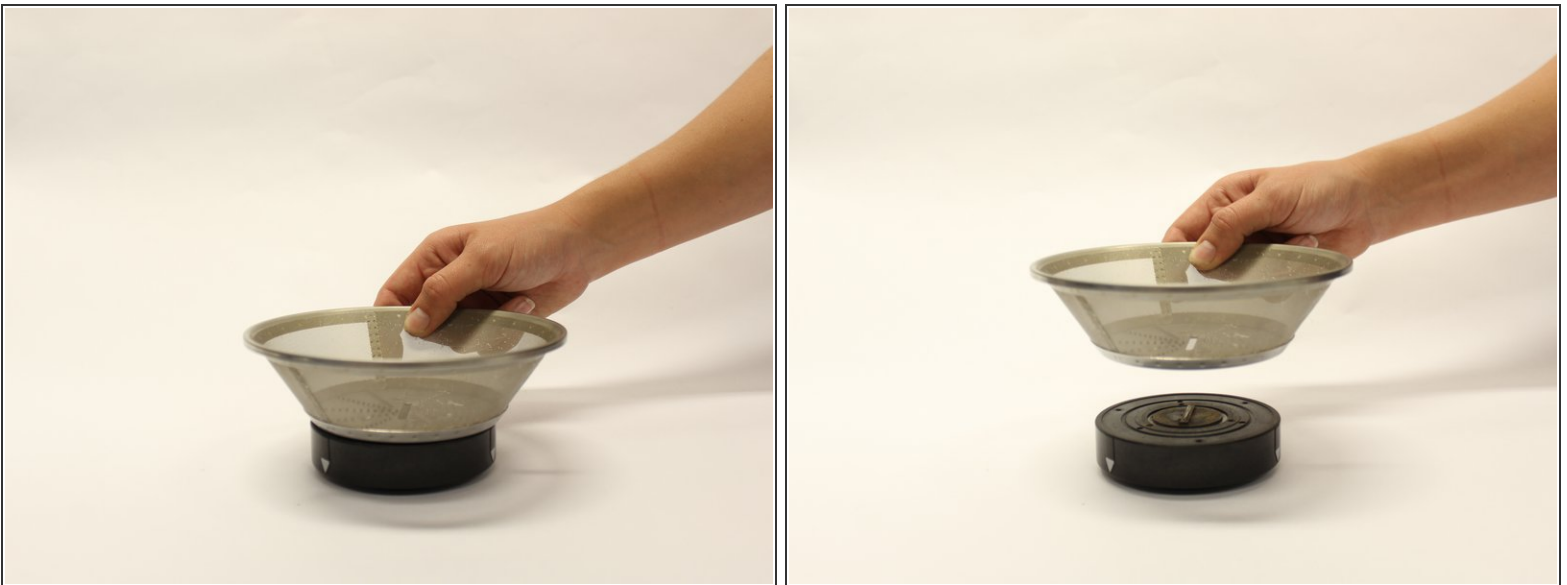
- Twist the filter bowl that surrounds the basket in a counterclockwise fashion. Lift the bowl straight up to remove it from the juicer.

## Step 7



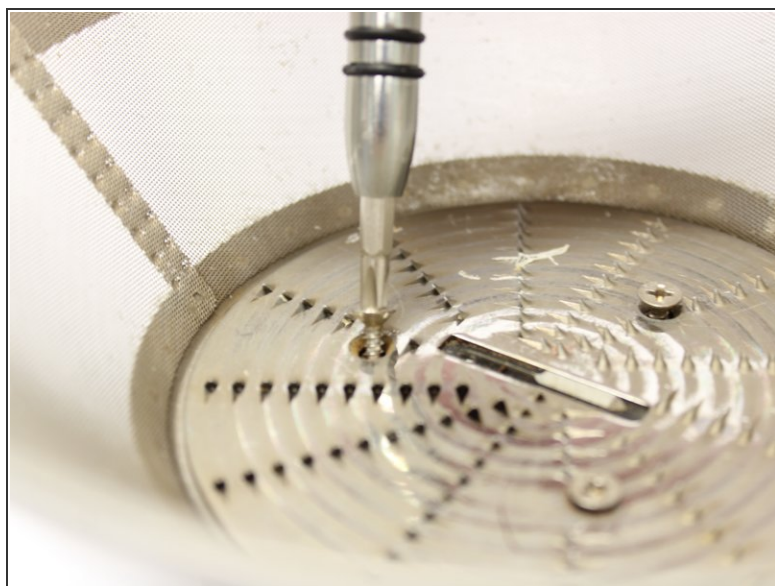
- To remove the filter basket from the surrounding bowl, use a plastic opening tool to create separation between the basket and the bowl.
- Once there is enough room, place your fingers under the grooves of the filter basket and lift up.

## Step 8



- In order to access the cutting disc, the basket must be removed from the base. To do this, simply lift the basket up and off of the base.

## Step 9



- To remove the cutting disc, unscrew the three Phillips #1 screws.

## Step 10



- With all three screws removed, use a plastic opening tool to lift the cutting disc out of the filter basket.
- ⚠ The cutting disc has many small and sharp blades. Make sure to hold the disc in between blades when handling.

To reassemble your device, follow these instructions in reverse order.