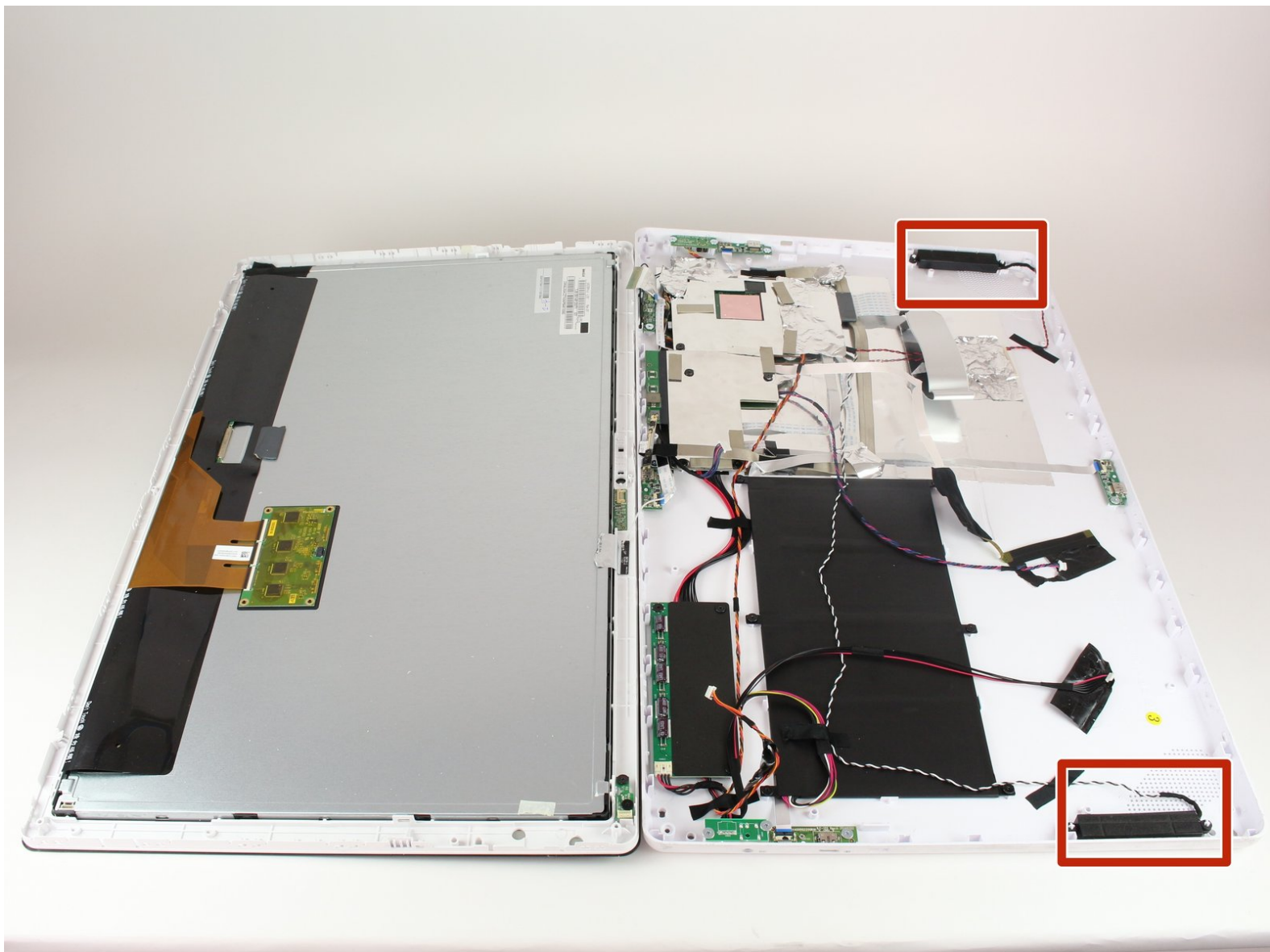




# Nabi Big Tab HD24 Speakers Replacement

Replacing the speakers in your tablet to get the sound back.

Written By: Kevin Garcia



---

## INTRODUCTION

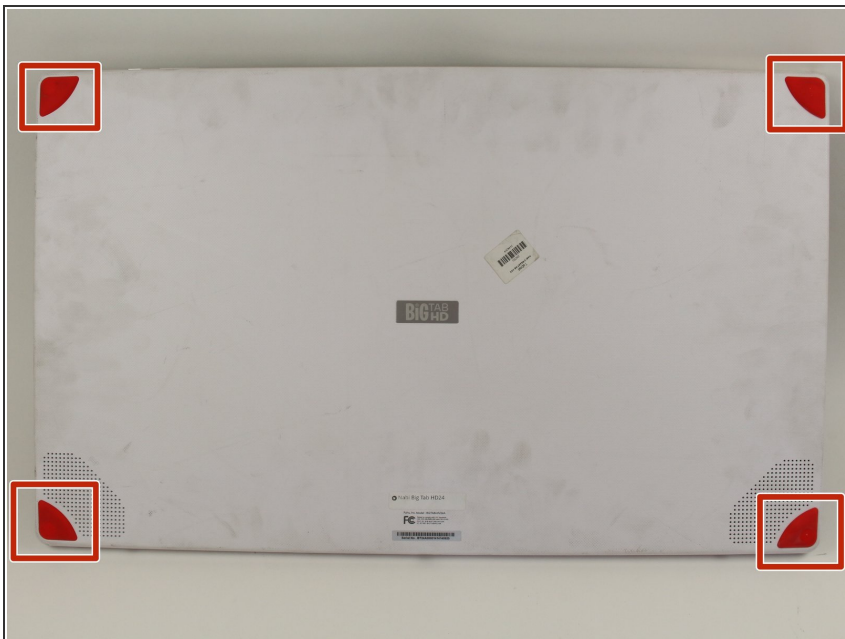
The Nabi Big Tab HD 24 has two internal speakers. When looking at the front of the tablet, there is one speaker located in each of the top corners. Before disassembly, determine which speaker is faulty. Mark which side the broken speaker is on by attaching a removable adhesive to the back panel.



### TOOLS:

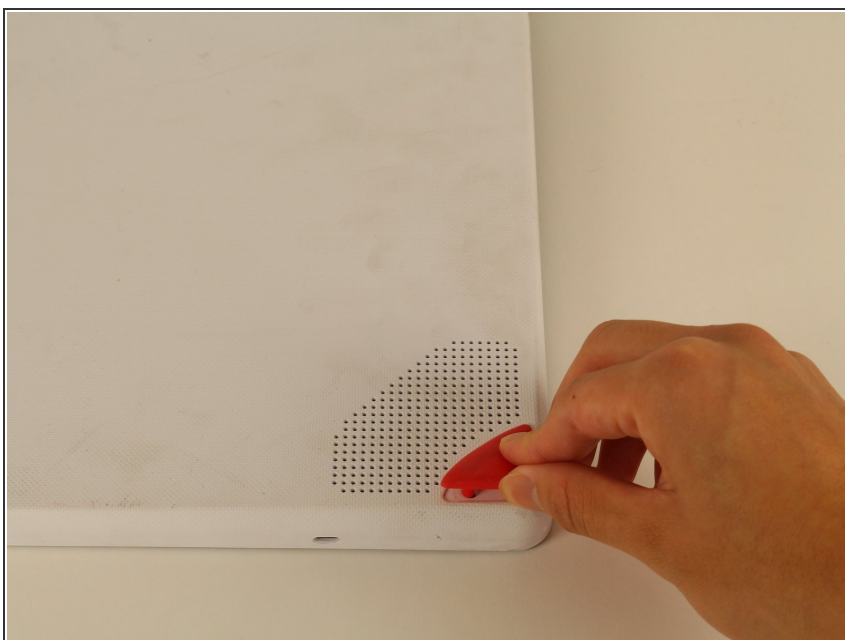
- [Phillips #1 Screwdriver](#) (1)
  - [iFixit Opening Tools](#) (1)
  - [Metal Spudger Set](#) (1)
-

## Step 1 — Back Assembly



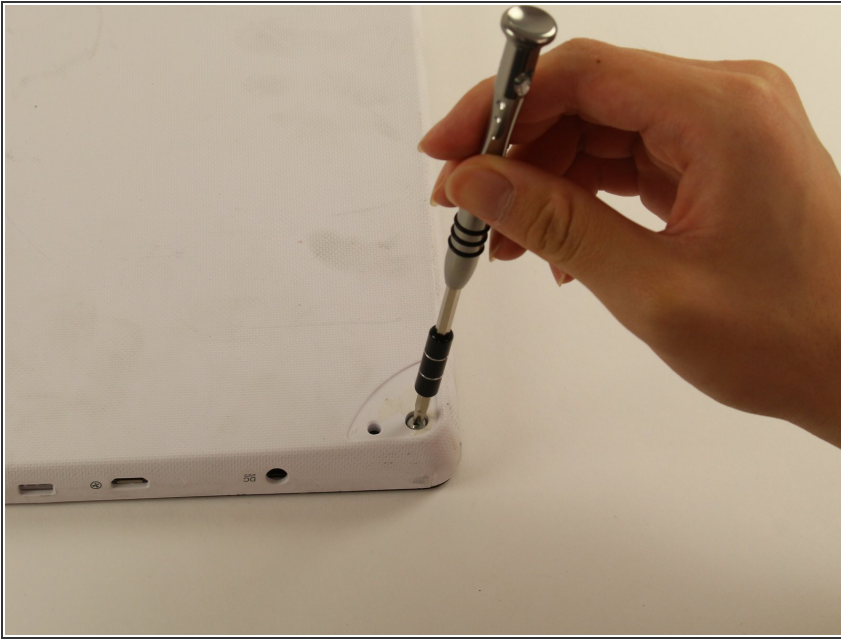
- ❗ Ensure that the tablet is facing you with the screen on the table.
- Locate the four red rubber stops at the corners.

## Step 2



- Use your fingers to carefully peel them off the device to reveal the screws underneath.

## Step 3



- Use a Phillips #1 screwdriver to remove the 9.5 mm screw in each of the four corners.

## Step 4



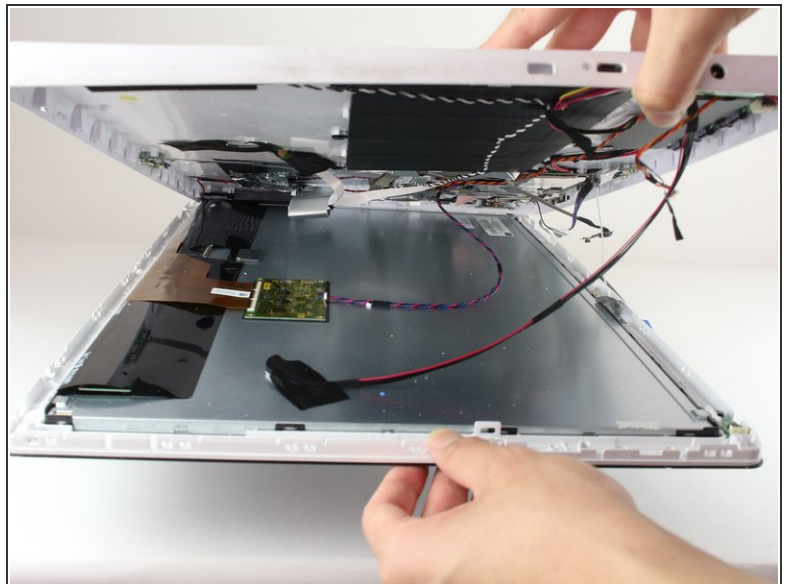
- ✦ Flip the tablet over such that the screen is facing upwards.
- Locate the the 4 small openings on the sides of the tablet.
- ⓘ There should be 2 on the bottom of the tablet, 1 on each side of the tablet viewing it from the front as if you were using it.
- ⚠ Do not confuse the openings with the charging port or the USB ports. The openings will be labelled with an icon of a small fan, the Nabi logo.

## Step 5



- Insert a metal spudger into one of the openings and carefully pop the device open by applying a steady downward force.
- Repeat for the other three openings.

## Step 6

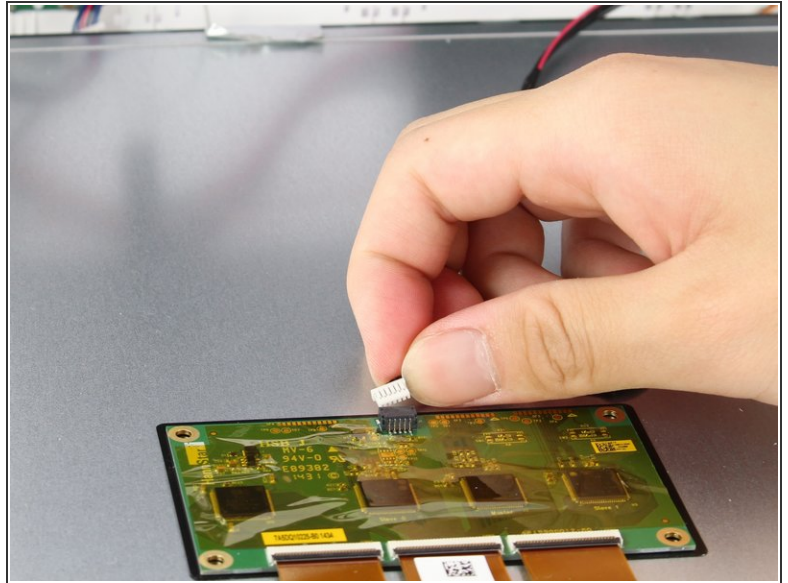
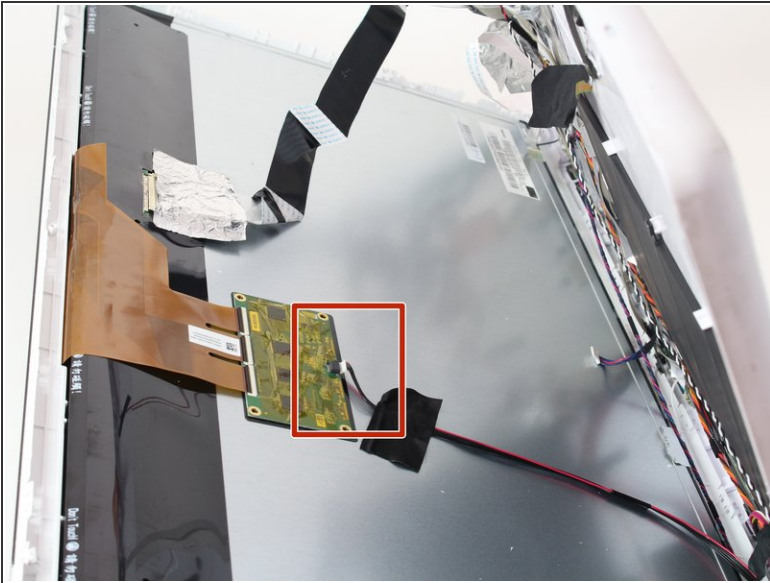


✎ Flip the device over so that the back assembly is facing you.

- Use a plastic opening tool to carefully pry open the device from its hinges.

⚠ Take care when opening the device as there are cables running internally that are connected to both the front and the back assemblies.

## Step 7



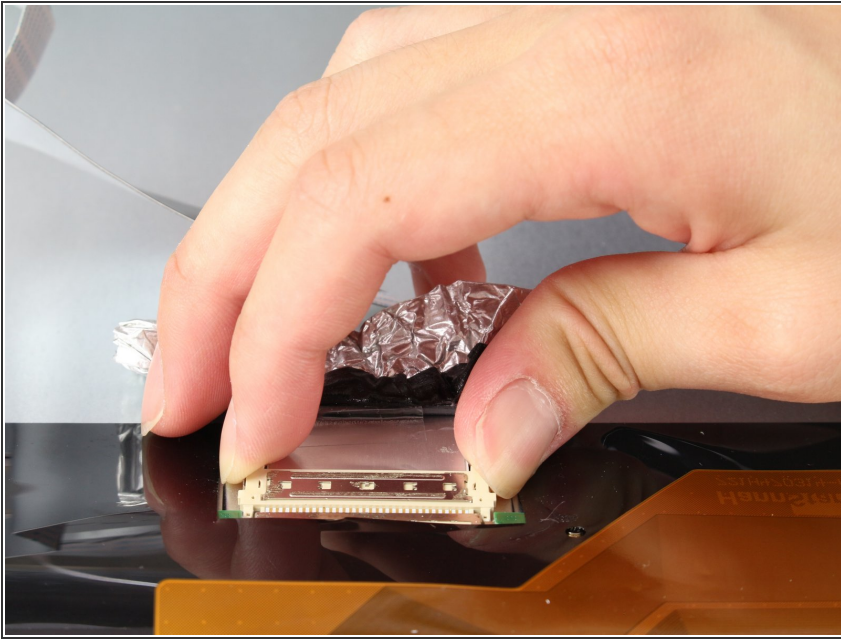
- Locate the white port that connects the back panel to the circuit board on the back of the display.
- Carefully pull the plastic connector straight out.

## Step 8



- ⚠ Be careful of the aluminum foil tape, as it can easily rip.
- Carefully lift up the aluminum foil tape with your fingers so that the ribbon connector reveals itself.
- ⚠ Do not try to pull the ribbon cables off the screen as there is a plastic piece surrounding the ribbon cables glued onto the metal display.

## Step 9



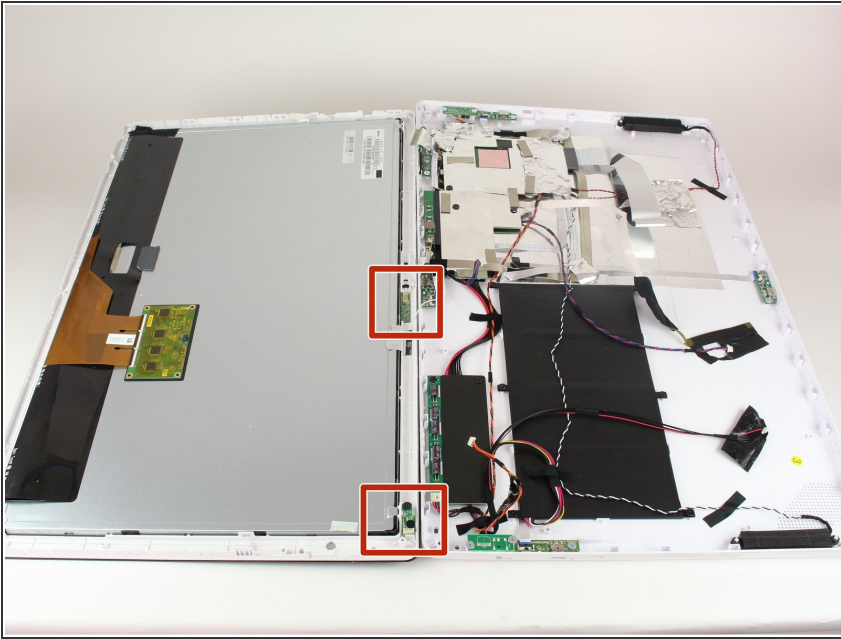
- Firmly press the two switches located on the sides of the connector and disconnect the connector from its connections.
- ⓘ Leave the connector disconnected but still intact with the metal display.

## Step 10



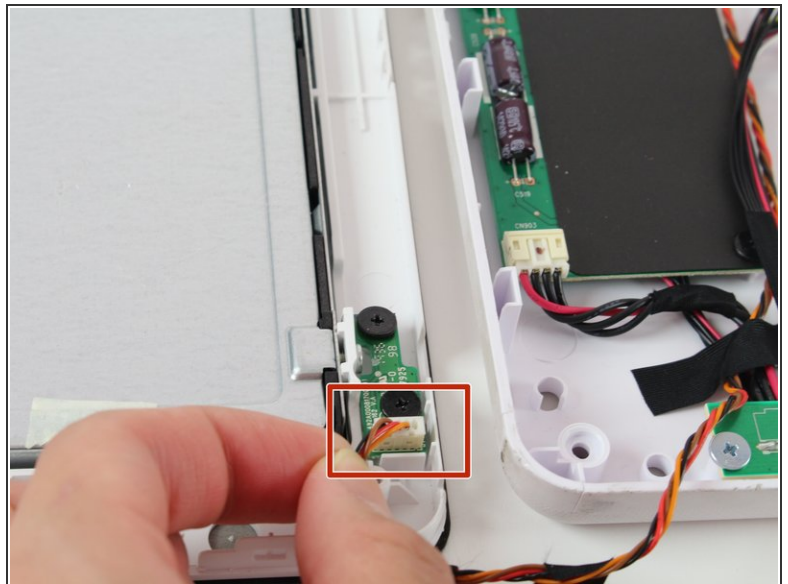
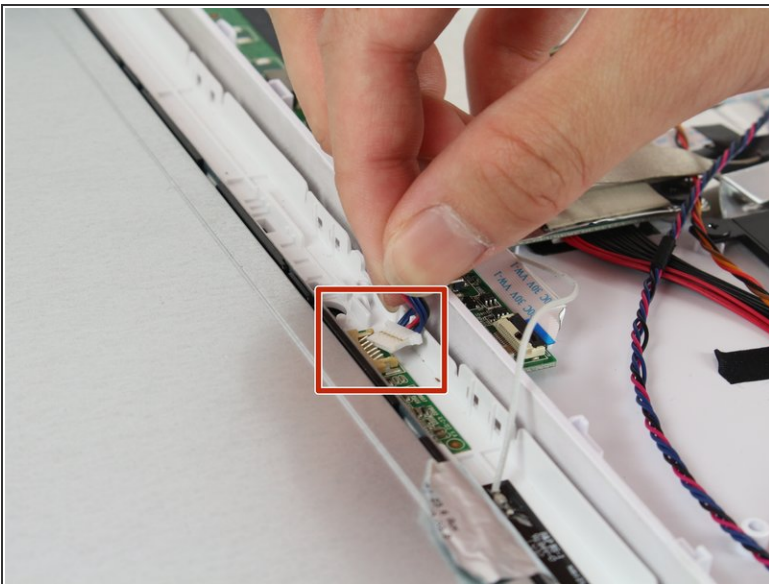
- Use a plastic opening tool and carefully push it underneath the grey plastic case surrounding the ribbon cable.
- Apply a downward force to carefully peel the grey plastic off of the metal display.

## Step 11



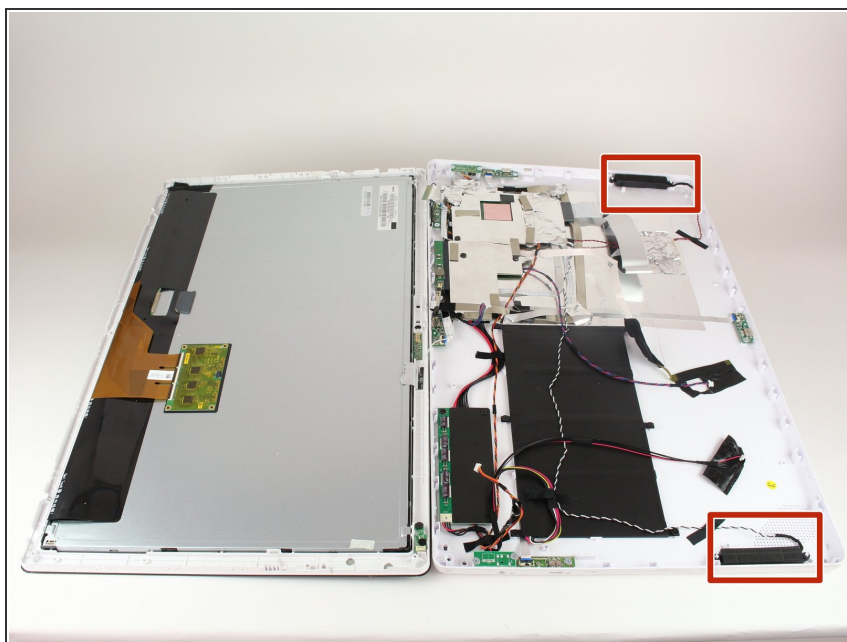
- Locate the two cables running on both sides of the device found at the bottom side of the screen.

## Step 12



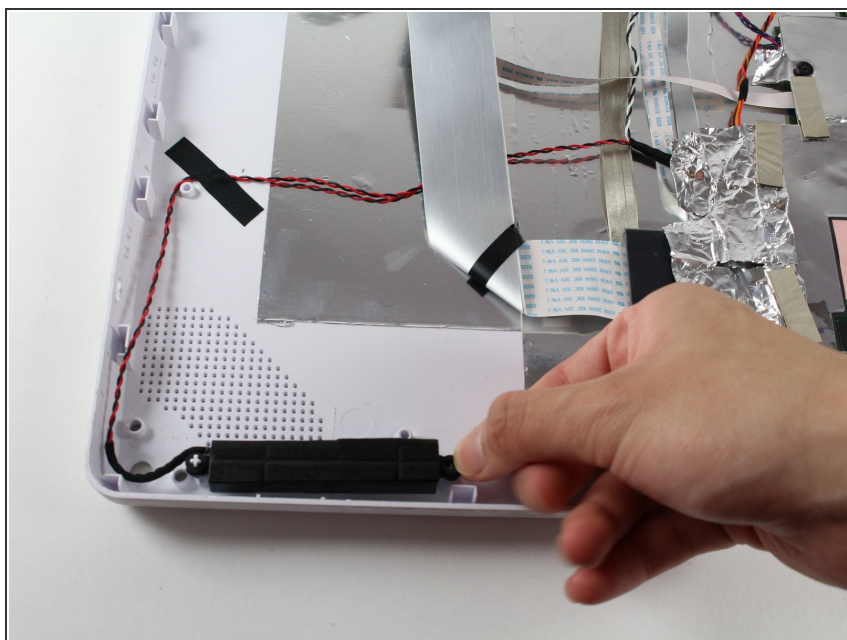
- Carefully grab both sides of the white plastic piece with your fingers and gently pull directly upward.
- ⚠ Do not pull from the red and black cable as it is not very sturdy and may come undone from the connector.

## Step 13 — Speakers



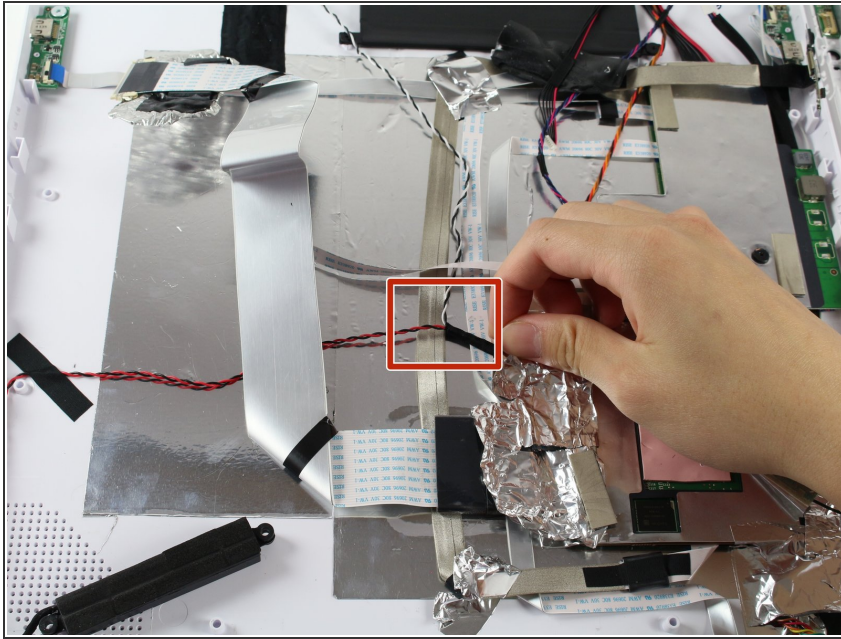
- Locate the faulty speaker. The two speakers are located in the upper corners of the back panel.

## Step 14



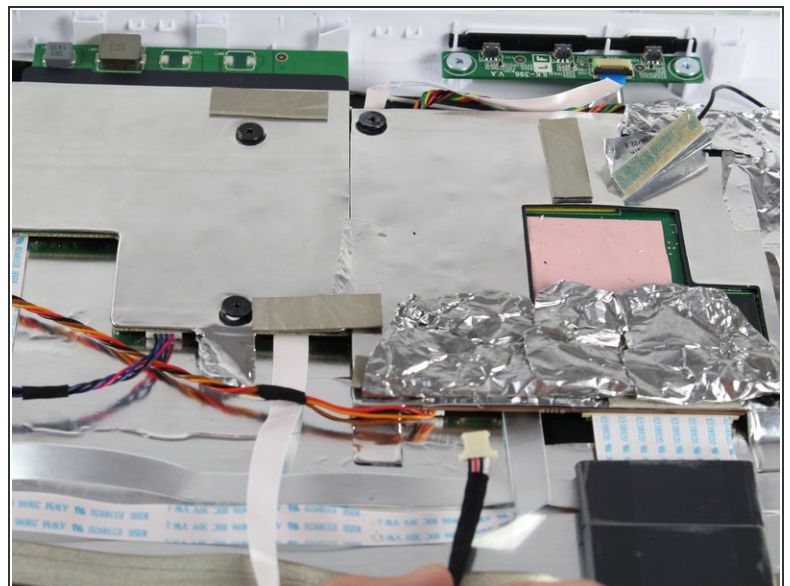
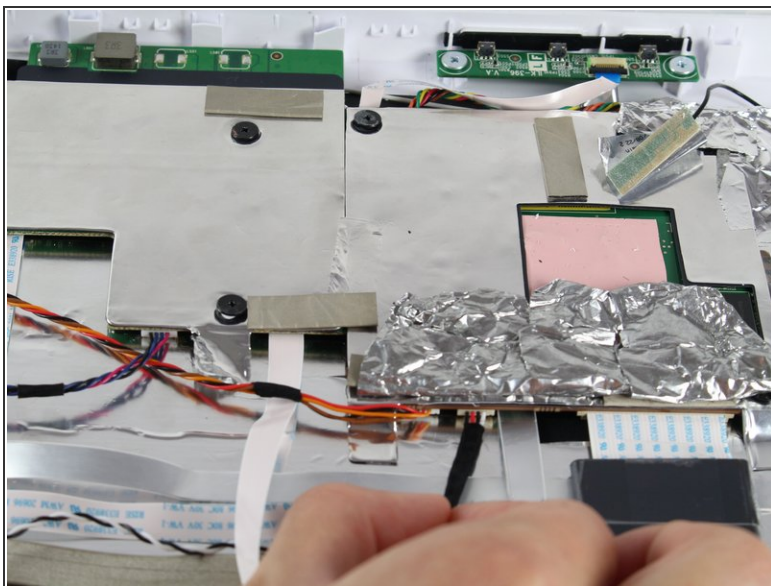
- Lift the speakers upwards, out of its holding place, with your fingers.
- ⓘ Lift from the cross shaped white plastic surrounded by the speakers at its edges.

## Step 15



- ✦ Remove the black tape taping the two wire bundles together.
- Follow the wires attached to the speakers to the motherboard.
- Gently lift up the aluminum tape so you can see the white connector connecting the wires to the motherboard.

## Step 16



- Pull the wire bundle out of the motherboard with a light tug to disconnect the speakers.
- Replace your broken speaker with the new ones.

To reassemble your device, follow these instructions in reverse order.