



RotoZip Rebel REB01 Type 2 Power Cord Replacement

Step-by-step instructions for replacing the power cord.

Written By: Ezzeddeen Gazali



INTRODUCTION


Damaged power cord? Why throw your saw away when you can fix it. If your saw has a damaged power cord, this guide will provide you with step-by-step instructions for the power cord replacement.

TOOLS:

- [64 Bit Driver Kit](#) (1)
 - [Metal Spudger](#) (1)
 - [Tweezers](#) (1)
-

Step 1 — Saw Casing



 Unplug the saw before attempting any of the replacement guides.

- Orient the saw so that the handle is closest to you and the saw end points towards the left.

Step 2



- Push down on the grey lock on the right side of the handle to unlock it.
- Pull the handle to detach it from the saw.

Step 3



- Lift the black lock at the tip of the saw to unlock the depth gauge.
- Pull the depth gauge to detach it from the saw.

Step 4



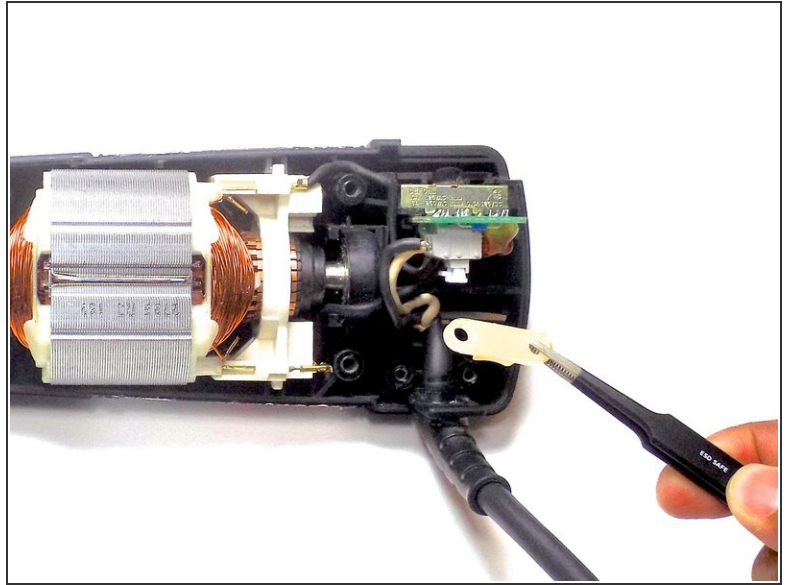
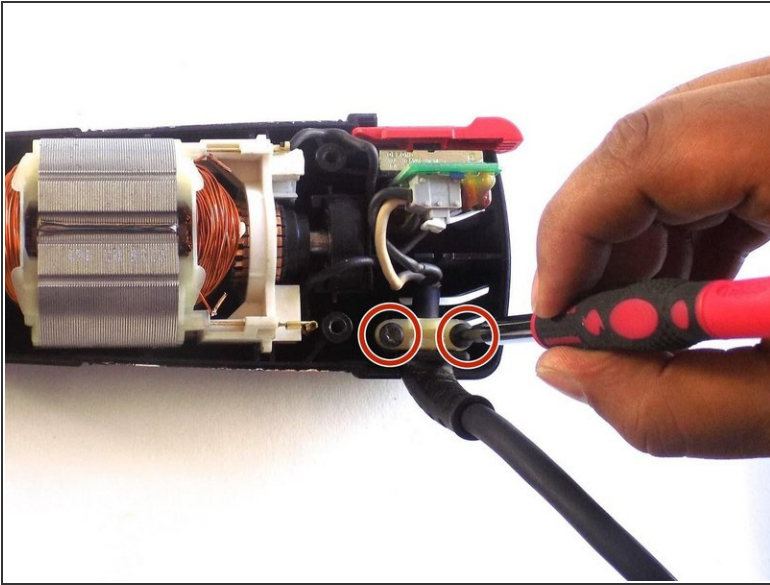
- Rotate the device so that the bottom of the saw is facing upwards.
- Remove the six 20mm screws with a 6mm flathead screwdriver.

Step 5



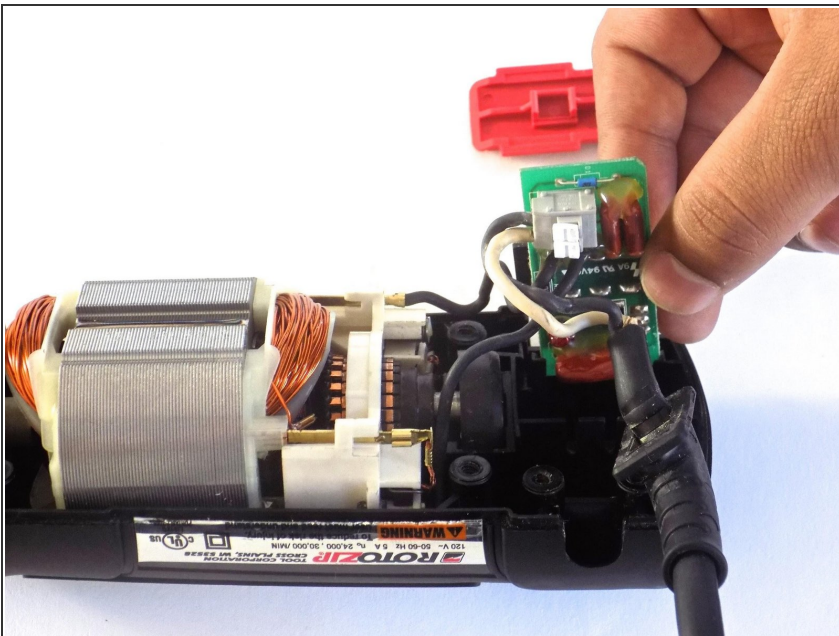
- Cut through the stickers on the right and left sides of the saw using a metal spudger.
- Pull off the top half of the casing.

Step 6 — Power Cord



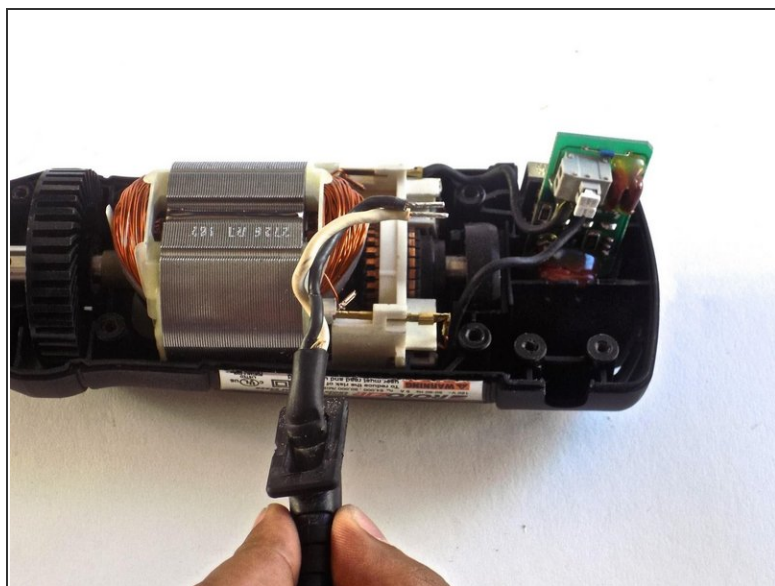
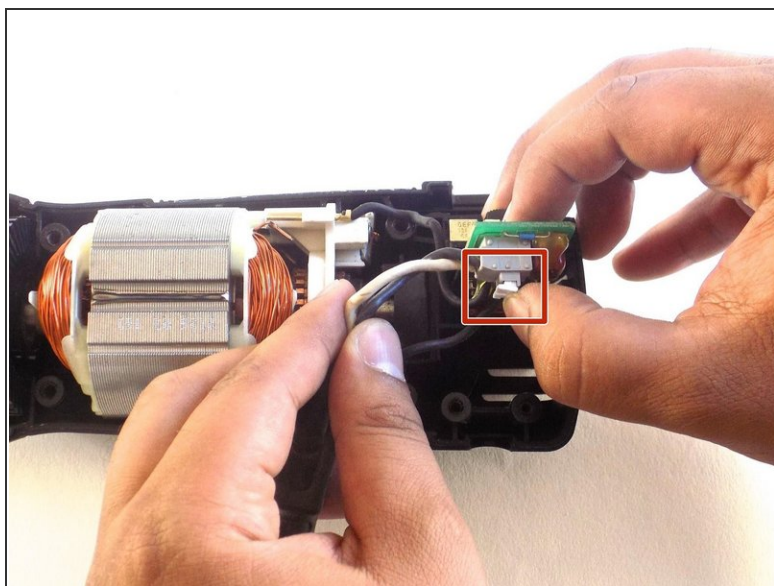
- Remove the two 14 mm screws on the plastic plate holding the power cord with a flat head screwdriver.
- Lift off the plastic plate holding the power cord with a tweezer.

Step 7



- Pull the switchboard out slowly.
- ⓘ The power switch will also come out. Set it on the side.

Step 8



- Pinch the two white clips with your thumb while simultaneously removing the black and white wires.
- Remove the power cord from the saw.
- ⓘ When reassembling, make sure to plug the black wire into the top clip.

To reassemble your device, follow these instructions in reverse order.