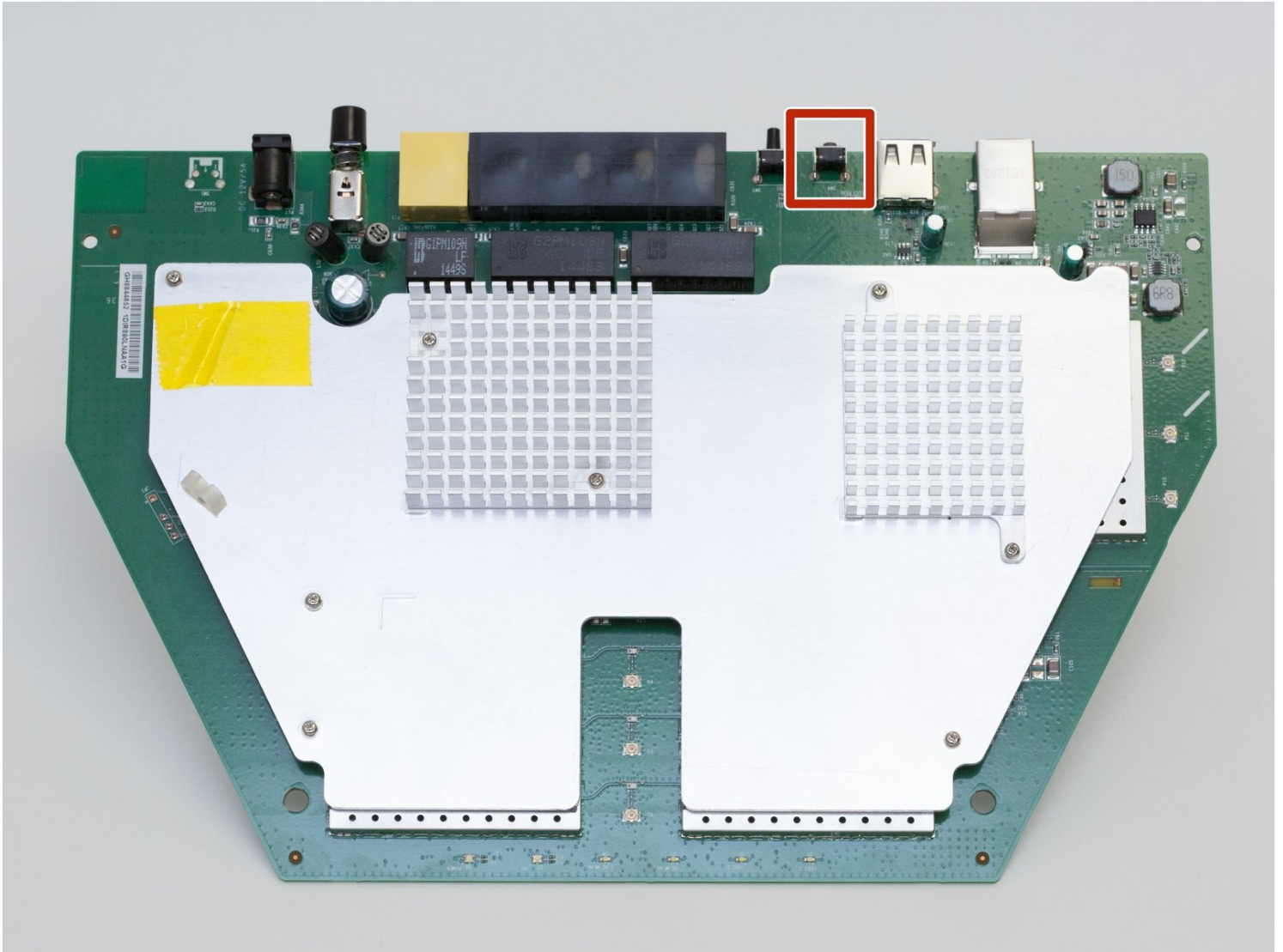




D-Link DIR-890L Reset Button Replacement

The reset button is responsible for restarting...

Written By: Rachel Shaw



INTRODUCTION

The reset button is responsible for restarting the router. This can be crucial if you are having problems with your wifi connection. If you can not press the reset button, use this guide to replace it.

This guide requires desoldering, which is an advanced skill.

TOOLS:

[iFixit Opening Tool](#) (1)

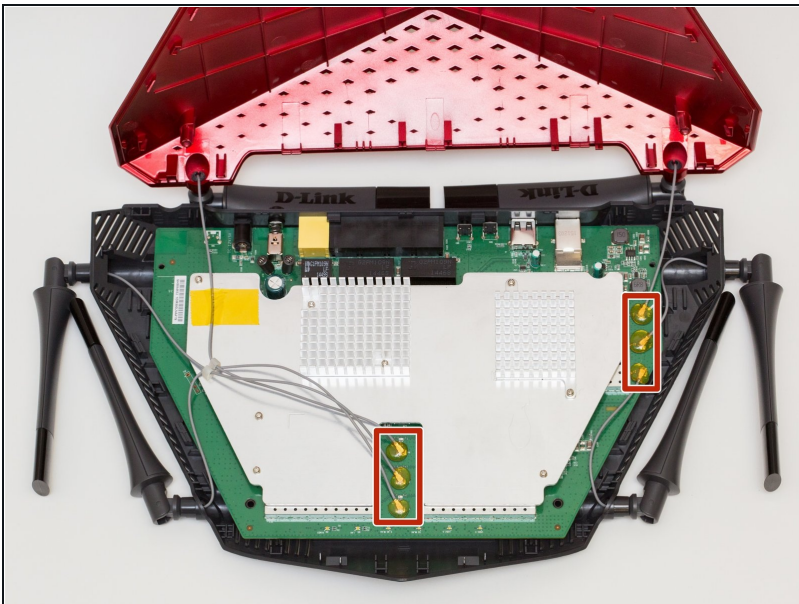
[Phillips #1 Screwdriver](#) (1)

[Heavy-Duty Spudger](#) (1)

[Desoldering Pump](#) (1)

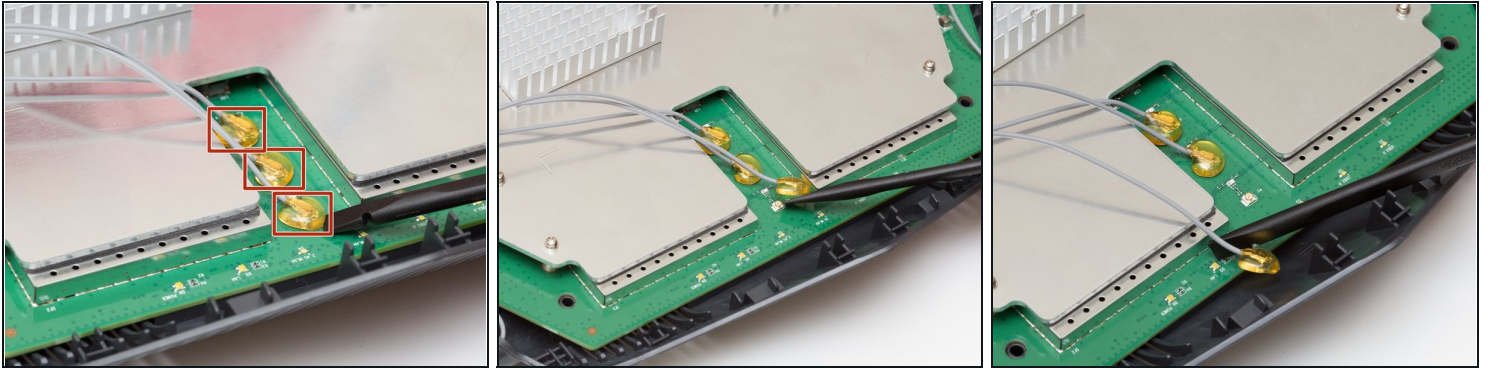
[Soldering Workstation](#) (1)

Step 1 — Motherboard



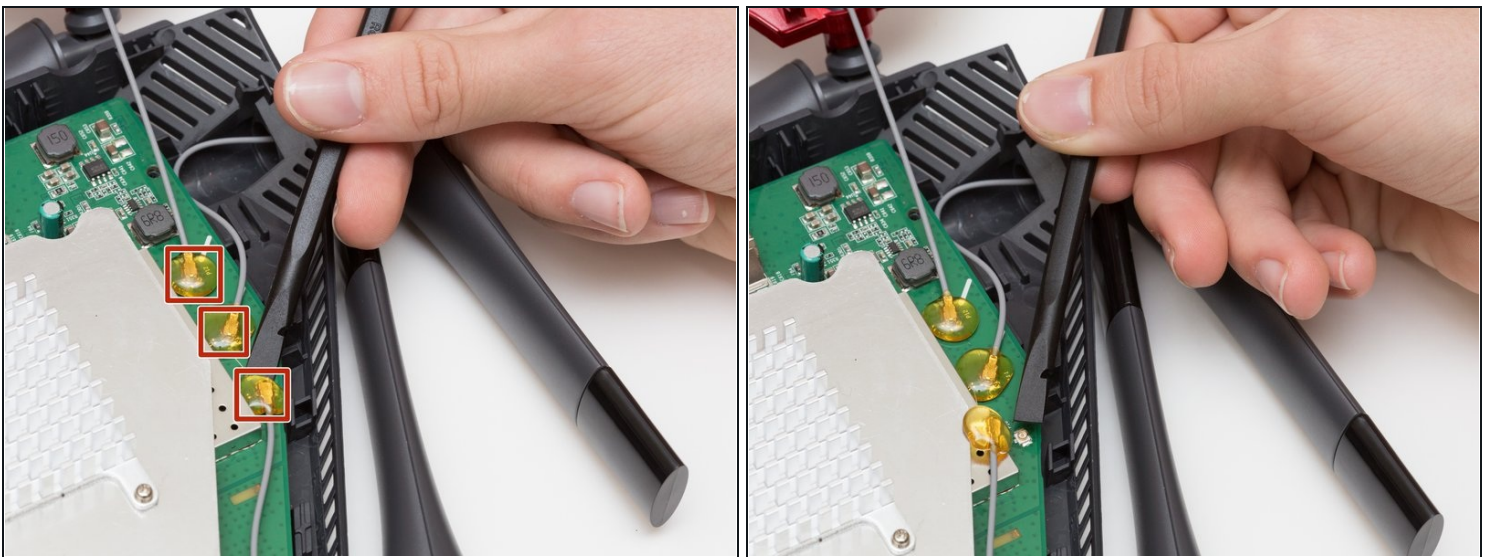
- Orient the router so the narrow end of the router faces you and the ports face away from you.
- The six, hot-glued antenna connections are in the middle and at the top right of the motherboard.

Step 2



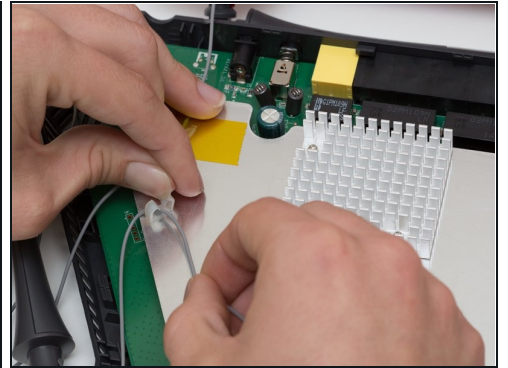
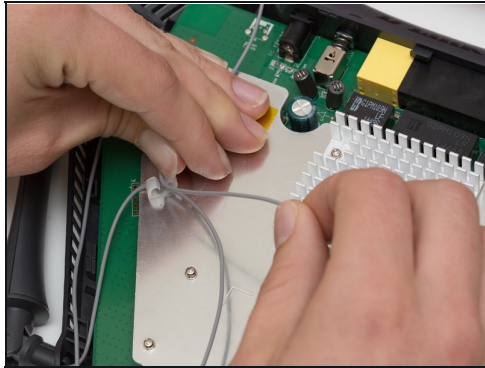
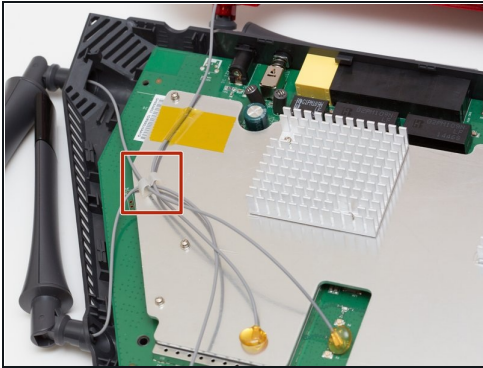
- Pry off the antenna connectors using a heavy-duty spudger.

Step 3



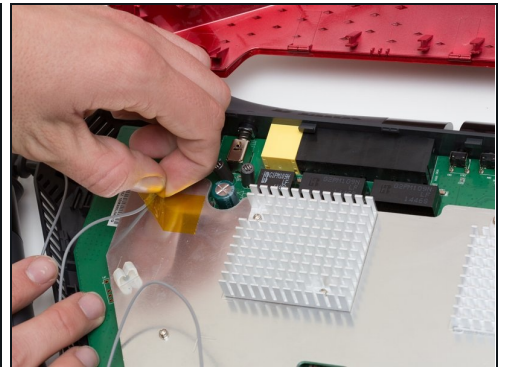
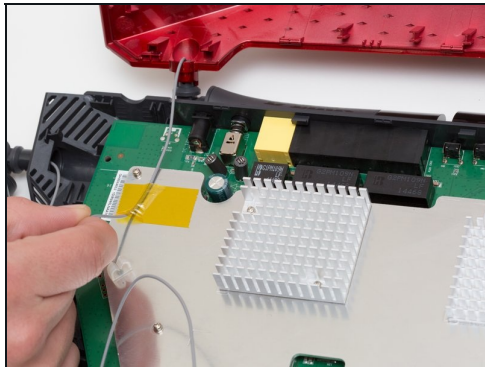
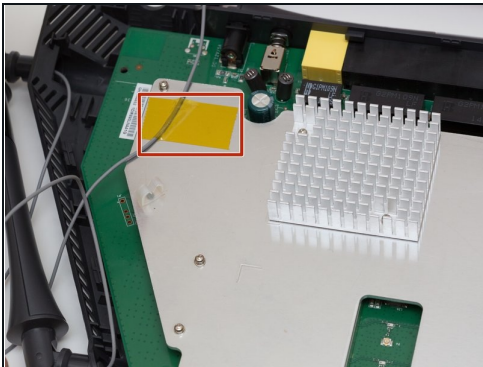
- Continue to pry off the last three antenna connections on the upper right portion of the motherboard.

Step 4



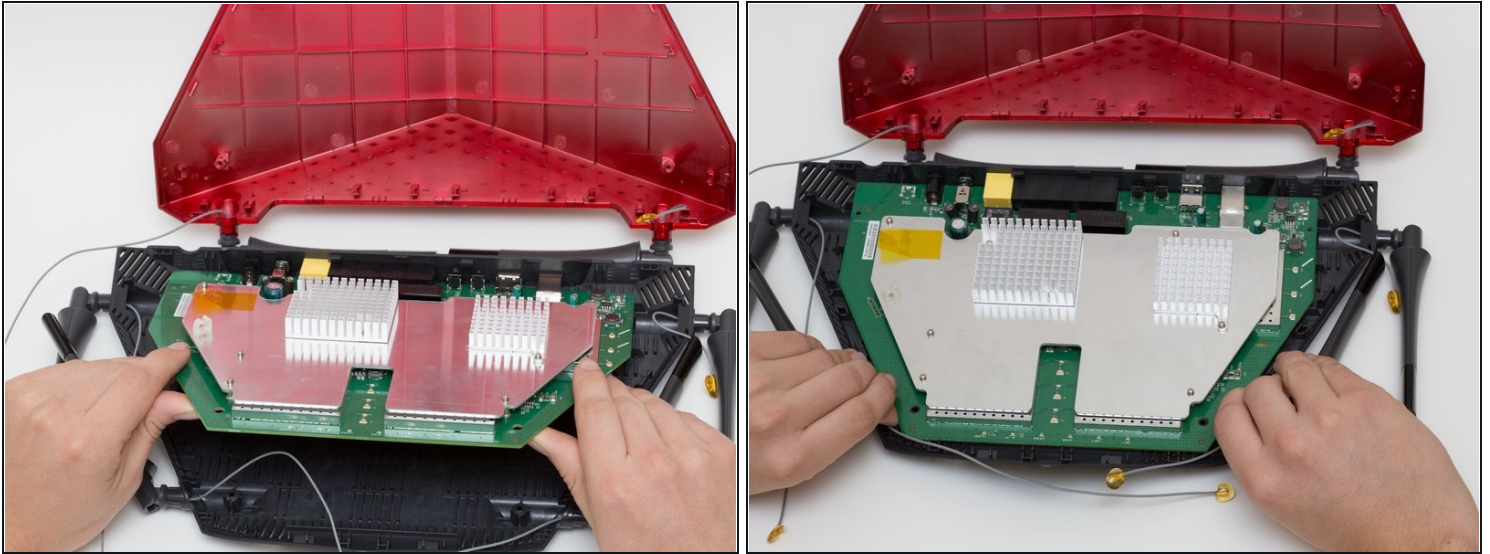
- Open the plastic bracket enclosing the three antenna wires and pull the wires out with your hands.

Step 5



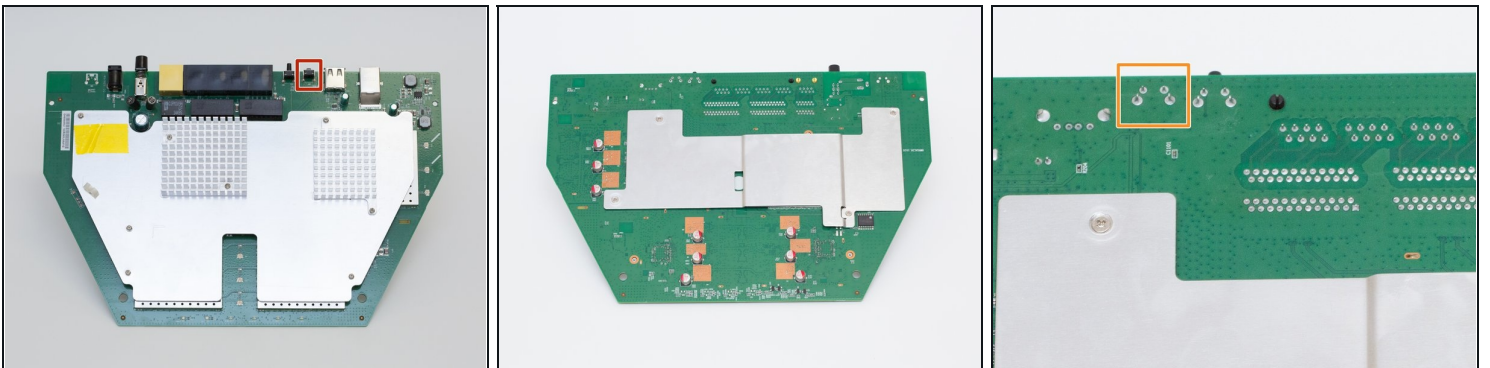
- Pull the yellow tape off of the motherboard to release the final antenna wire.

Step 6



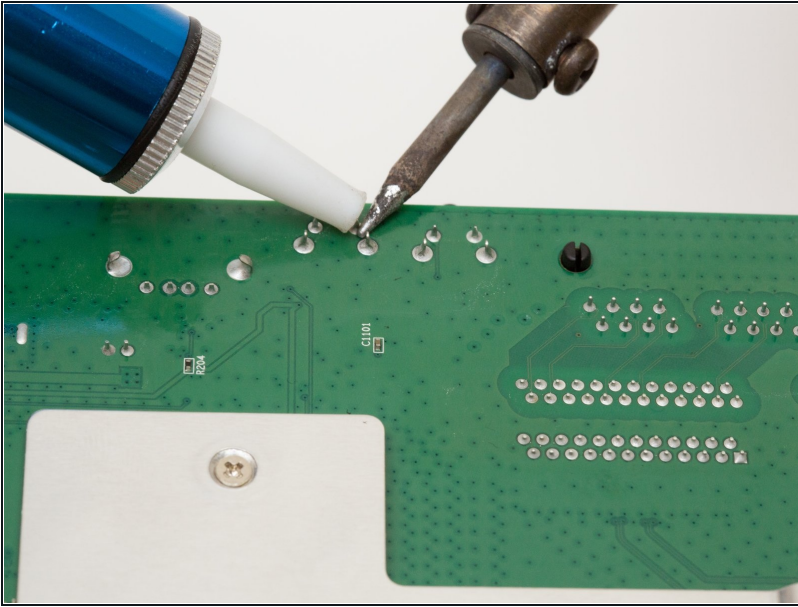
- Pull the the motherboard away from the case to remove it. Start on the side closest to you, and pull up and out.

Step 7 — Reset Button



- Locate the reset switch at the top of the motherboard.
- Flip the motherboard over.
- Locate the reset switch's 4 solder joints on the underside of the motherboard.

Step 8



- Using a soldering iron and [desoldering pump](#), desolder the reset switch from the board.
- ① For more information, see [this guide](#) on desoldering.

To reassemble your device, follow these instructions in reverse order.