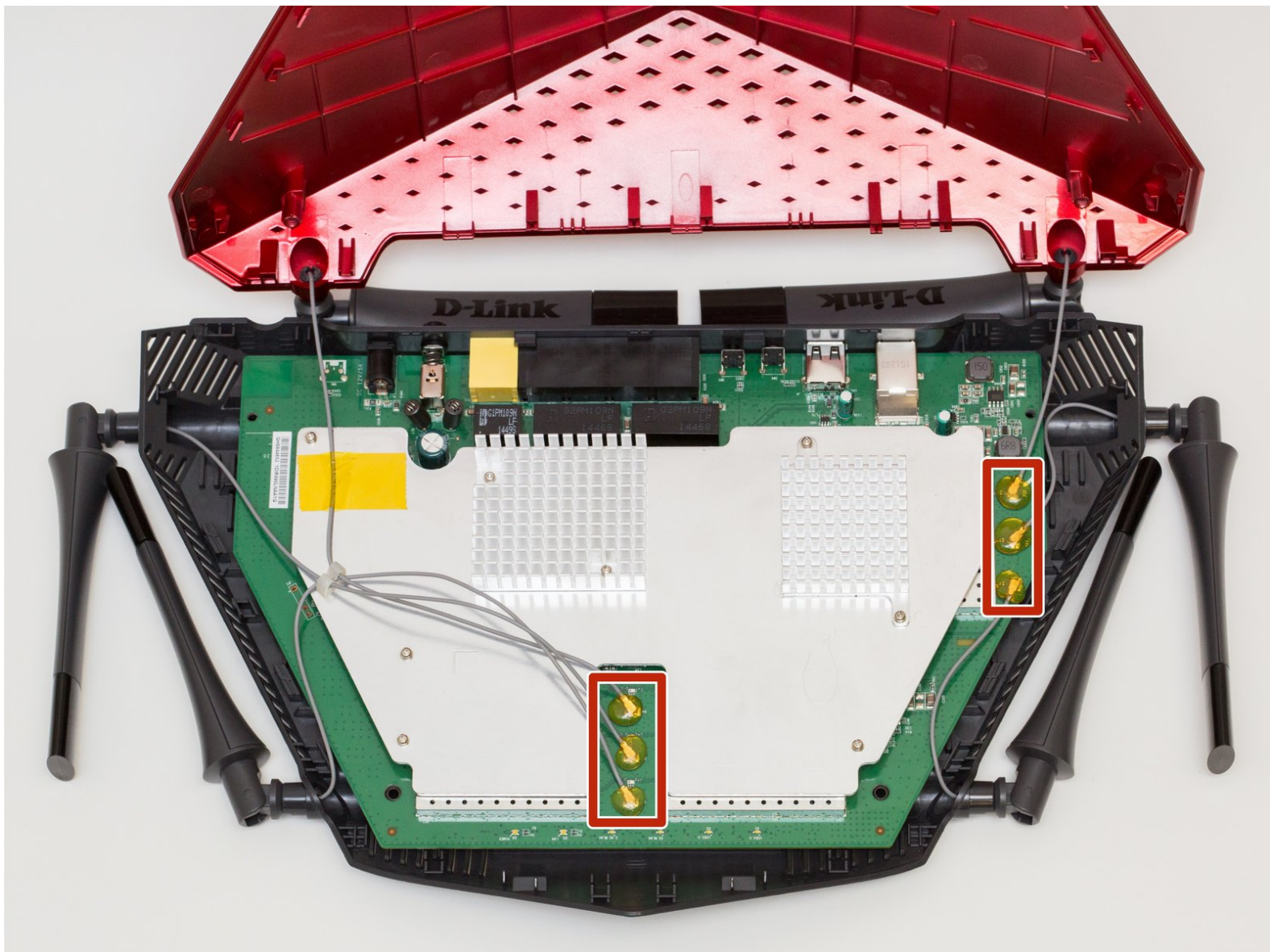




# D-Link DIR-890L Motherboard Replacement

Follow this guide for replacing the motherboard.

Written By: Rachel Shaw



## INTRODUCTION

The motherboard is the main hub of the router. It is responsible for all the functions of the router. Problems like a lack of connection, water spillage on router, fire on router, will all require a replacement of the mother board.



### TOOLS:

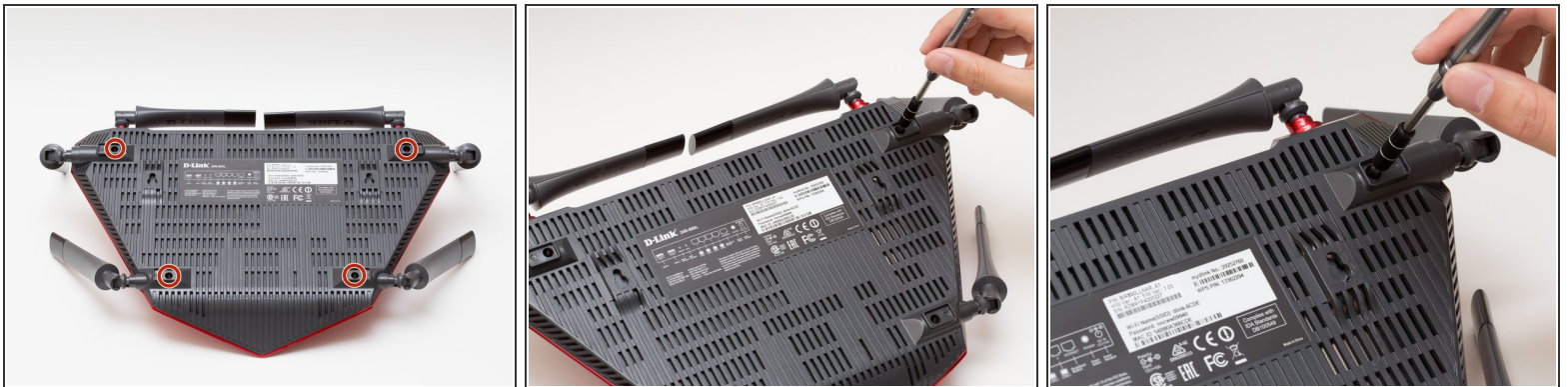
- [iFixit Opening Tools](#) (1)
  - [Phillips #1 Screwdriver](#) (1)
  - [Heavy-Duty Spudger](#) (1)
-

## Step 1 — Case



- Peel off the four rubber rectangular feet with your fingers.
- ⓘ The feet may be hard to remove. Apply additional force if necessary.

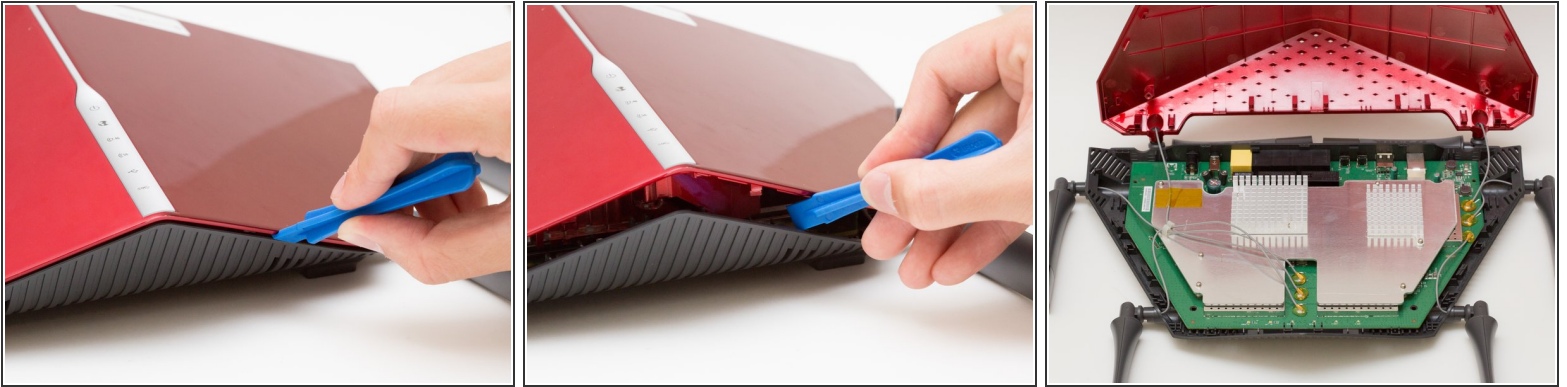
## Step 2



- Unscrew the 5mm screws in each corner using the Phillips #1 screwdriver.

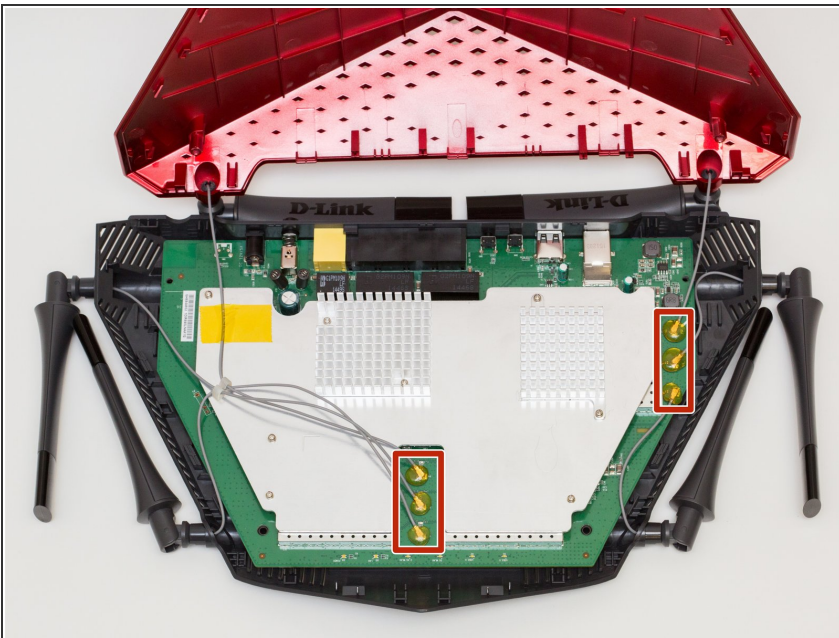


### Step 3



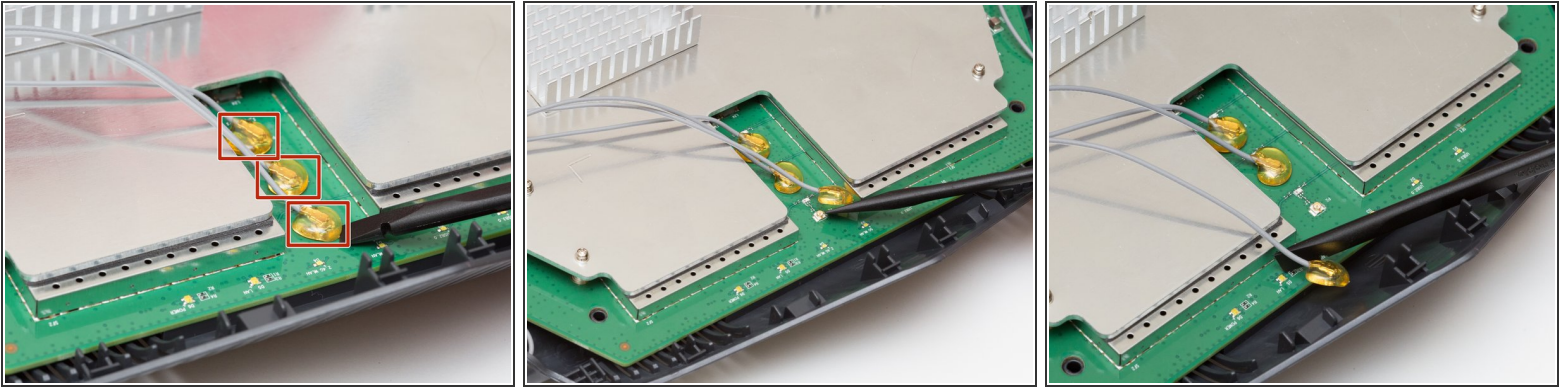
- Wedge the opening tool between the red top panel and the gray bottom panel.
- Twist the opening tool to separate the panels. Work your way around the case until both of the panels are separated.

### Step 4 — Motherboard



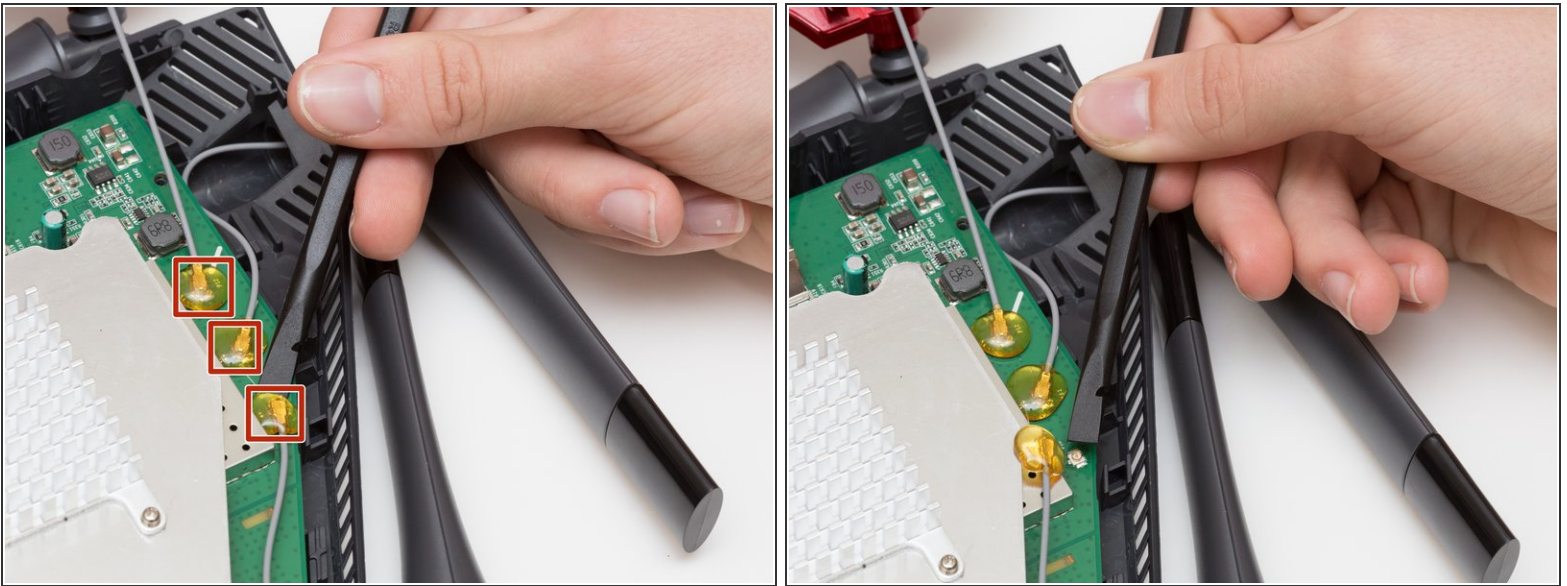
- Orient the router so the narrow end of the router faces you and the ports face away from you.
- The six, hot-glued antenna connections are in the middle and at the top right of the motherboard.

## Step 5



- Pry off the antenna connectors using a heavy-duty spudger.

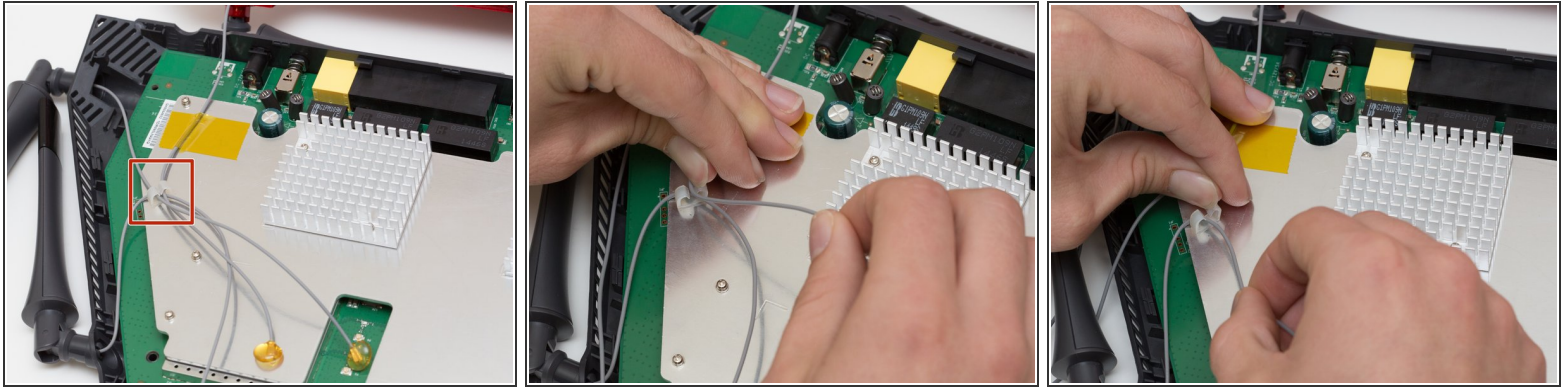
## Step 6



- Continue to pry off the last three antenna connections on the upper right portion of the motherboard.

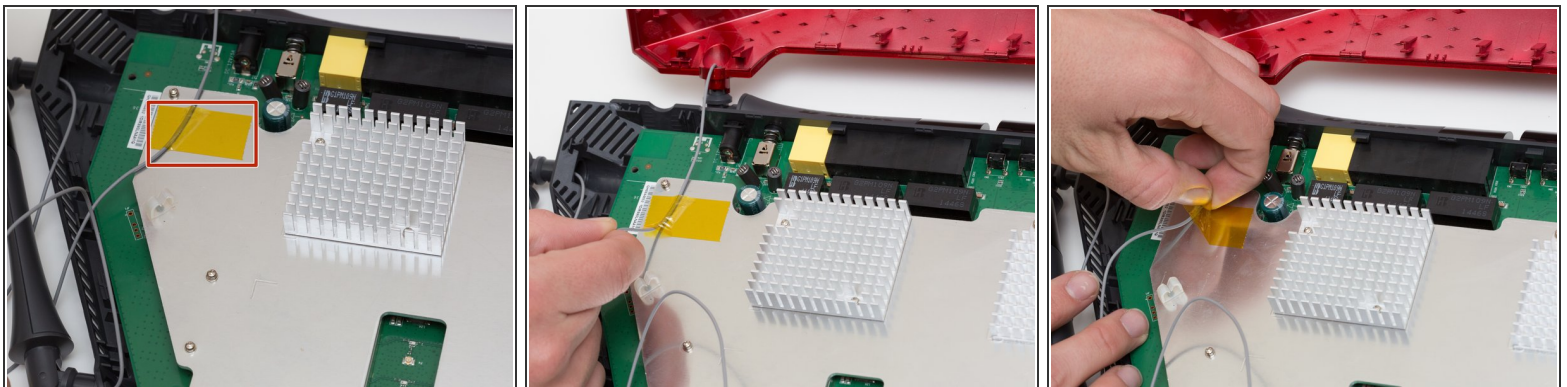


## Step 7



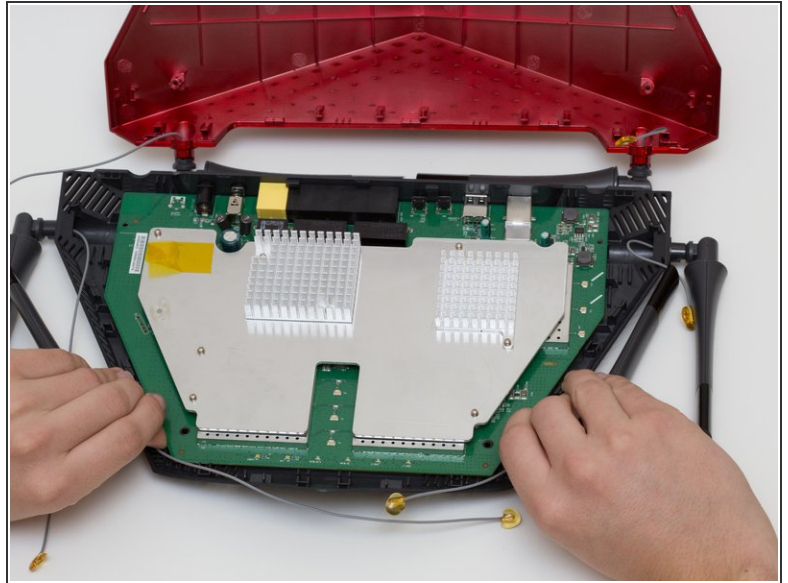
- Open the plastic bracket enclosing the three antenna wires and pull the wires out with your hands.

## Step 8



- Pull the yellow tape off of the motherboard to release the final antenna wire.

## Step 9



- Pull the the motherboard away from the case to remove it. Start on the side closest to you, and pull up and out.

To reassemble your device, follow these instructions in reverse order.