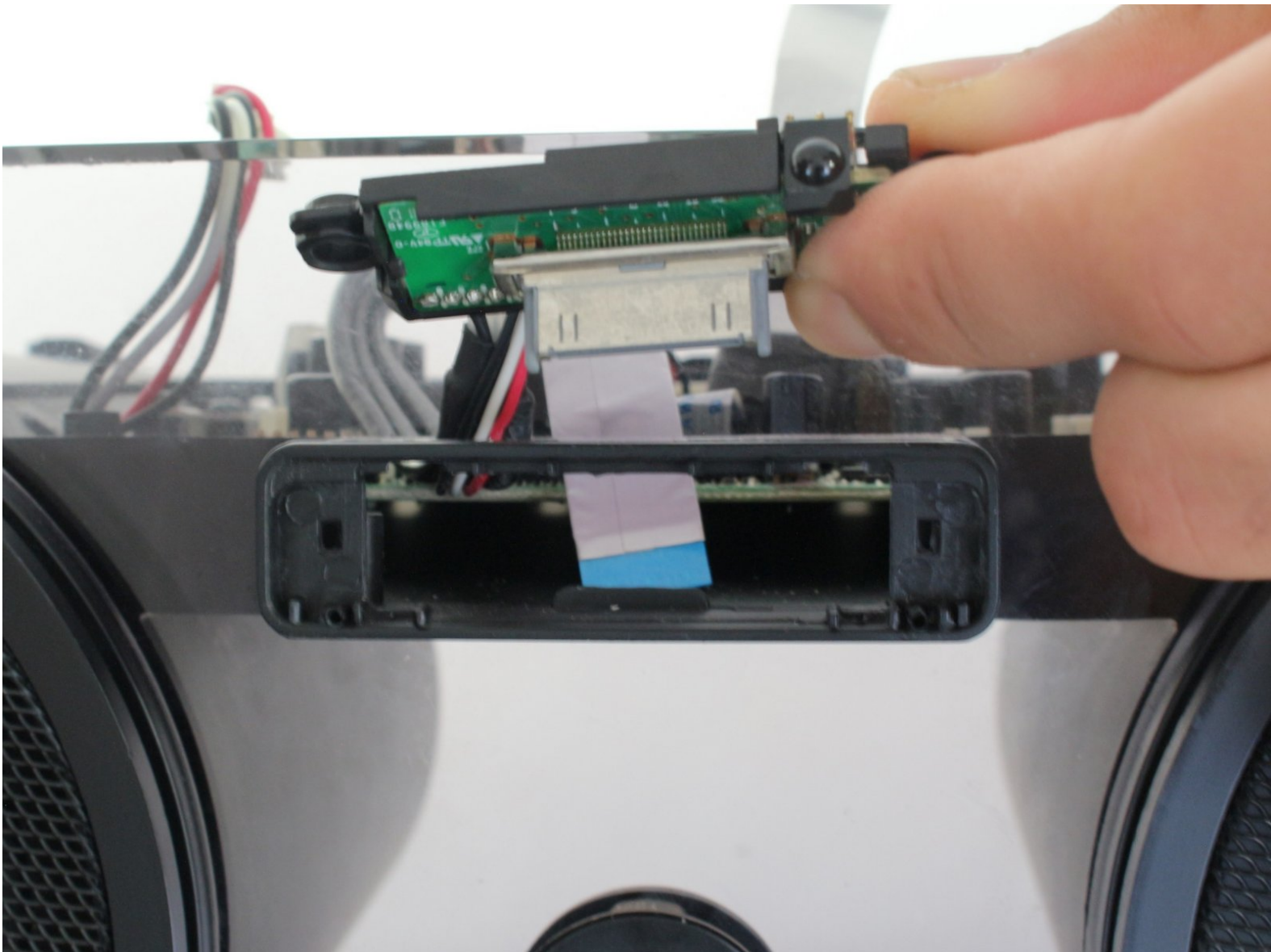




iHome iP1 30-pin Connector Replacement

Replace the 30-pin connector on your iHome iP1.

Written By: Wen Sullivan



INTRODUCTION

Use this guide to replace your iHome iP1's damaged or faulty 30-pin connector. This connector is located on the iPod/iPhone dock and is used to connect your Apple device to your iHome iP1.

TOOLS:

- [Phillips #1 Screwdriver](#) (1)
 - [Phillips #2 Screwdriver](#) (1)
-

Step 1 — Dock Cover



- Orient the iHome upside down with the speakers facing you.

Step 2



- Remove the two 9.5 mm Phillips #1 screws from the dock cover.

Step 3



- Remove the dock cover by grabbing its sides and pulling it up and away from the faceplate.

Step 4 — Back Cover



- Orient the iHome upside down with the speakers facing away from you.

Step 5



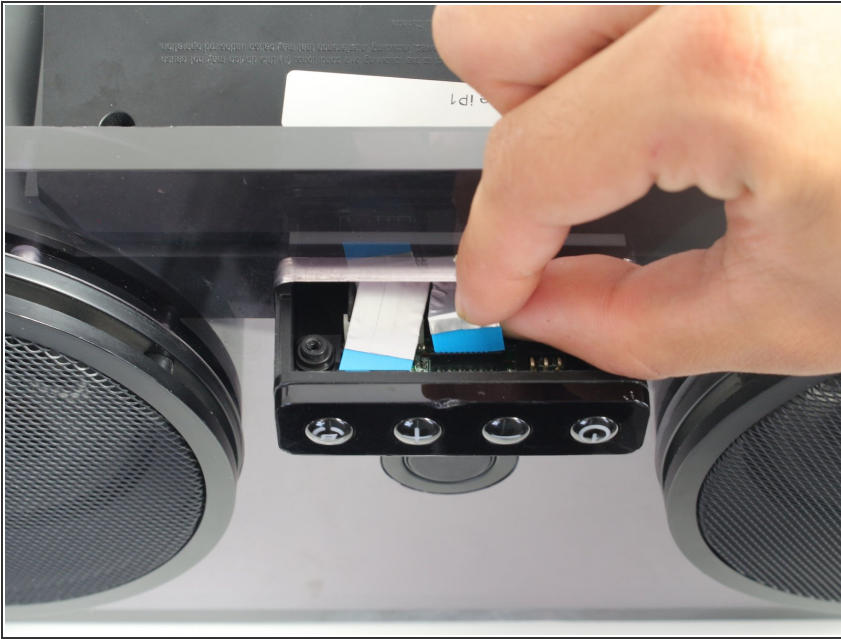
- Remove the four 9.5 mm Phillips #2 screws located on each of the four corners of the iHome's back cover.

Step 6



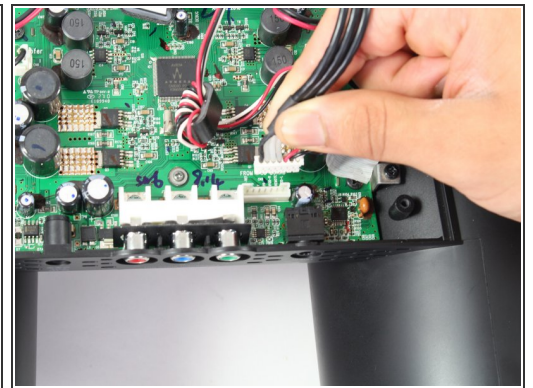
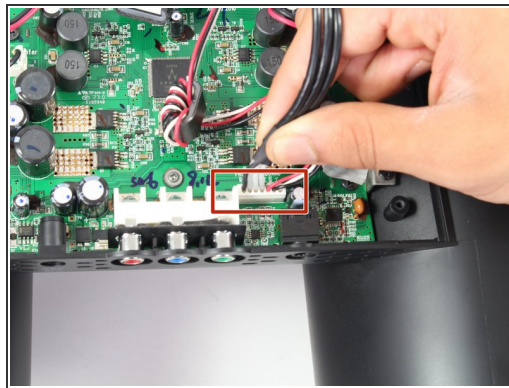
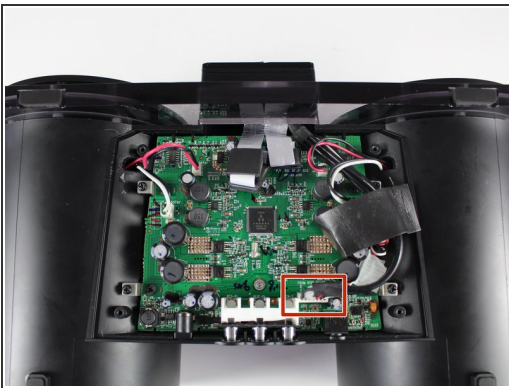
- Remove the back cover by grabbing its sides and lifting it off the iHome.

Step 7 — 30-pin Connector



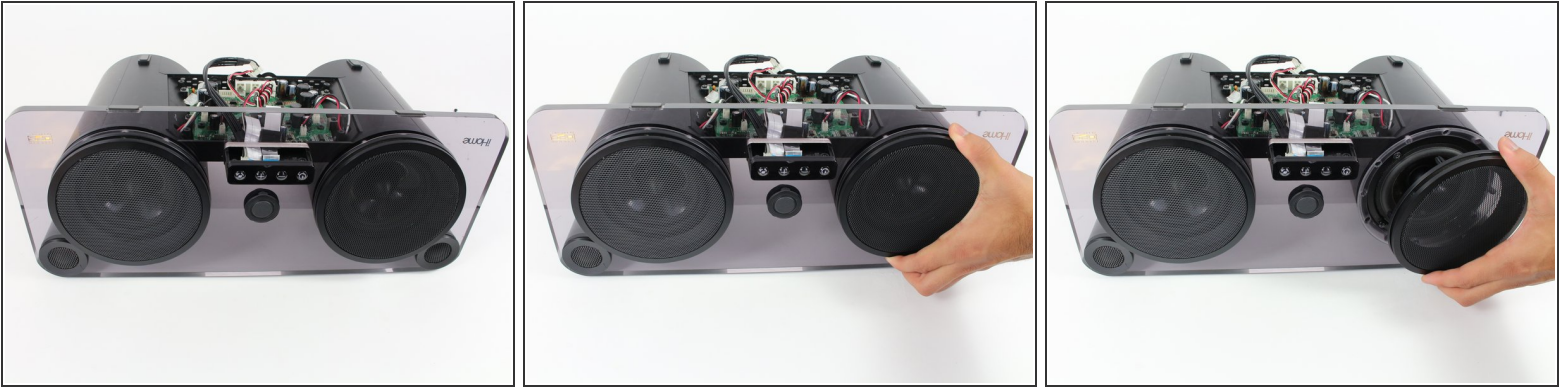
- Rotate the iHome so that the speakers are facing you.
- Disconnect the silver ribbon cable connected to the 30-pin connector (the middle one) by pulling it directly up.

Step 8



- Rotate the iHome so that the speakers are once again facing away from you and the motherboard is still exposed.
- Unplug the wide red/white/black wire bundle from the lower right-hand corner of the motherboard by pulling it out of their connection.

Step 9



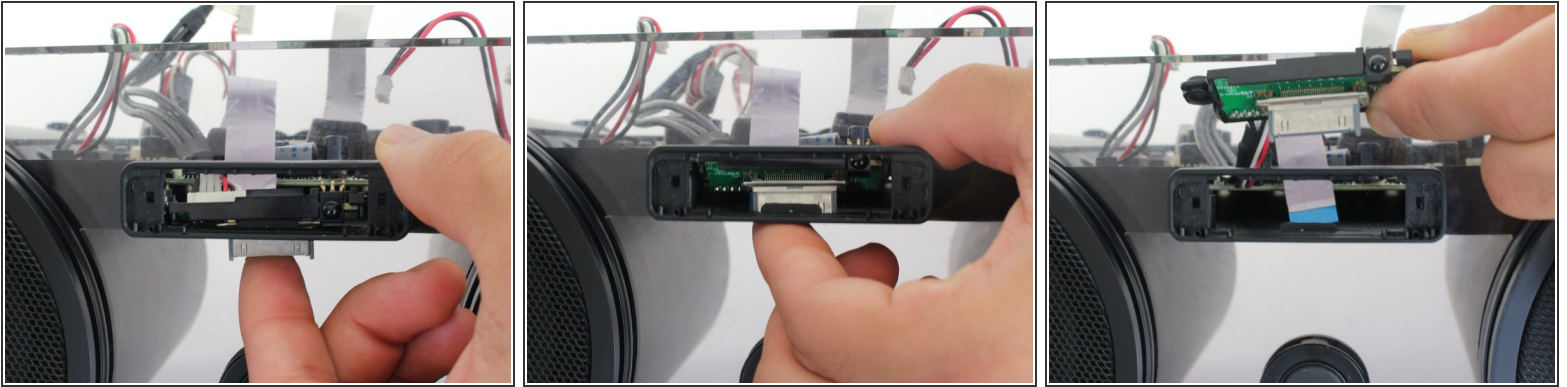
- Rotate the iHome iP1 so that the speakers are now facing you.
- Remove both of the speaker covers by pulling them off of the faceplate.

Step 10



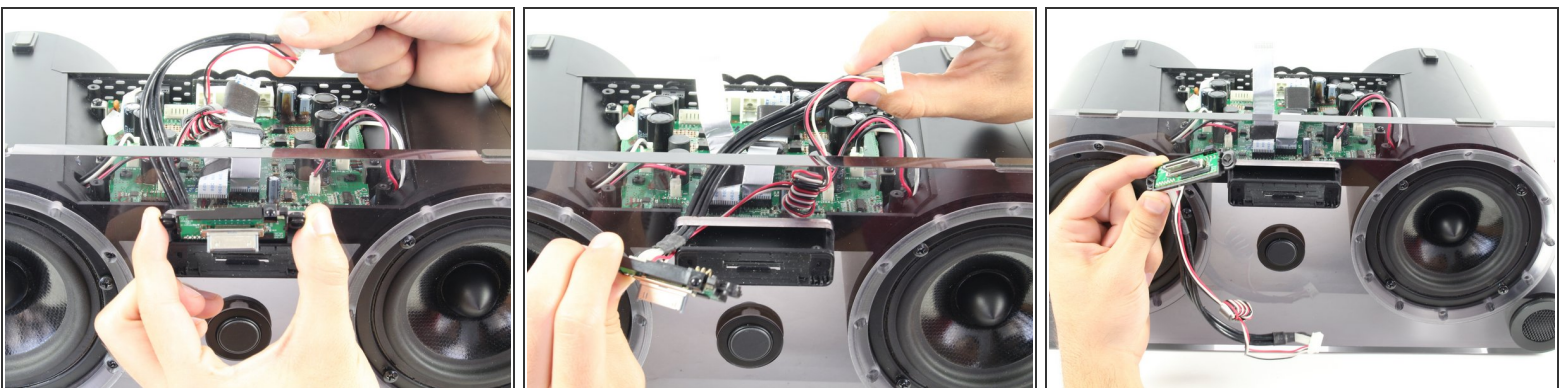
- Unscrew the twelve 14.5 mm Phillips #2 screws holding the faceplate to the speaker housing. (There are six screws connecting the faceplate to each speaker.)
- ⓘ Completing this step will loosen the faceplate enough to pull the bundle of cables attached to the 30-pin connector through a hole in the faceplate, allowing the 30-pin connector to be removed from the iHome.

Step 11



- Detach the 30-pin connector from the dock housing by pushing it through the slot which it sticks out of.
- ⓘ Sometimes the 30-pin connector can get stuck in the dock housing, making it difficult to push through. To prevent this, push each side of the 30-pin connector evenly. This step can be accomplished without the use of any additional tools.
- ⓘ The command buttons have been shown as removed to show how to detach the 30-pin connector. However, it is not necessary to remove the command buttons in order to remove the 30-pin connector.

Step 12



- Remove the 30-pin connector from the iHome by pulling the bundle of cables attached to it through the center hole in the faceplate.
- ⓘ You may have to wiggle the faceplate to be able to pull the bundle of cables through its center hole.

To reassemble your device, follow these instructions in reverse order.