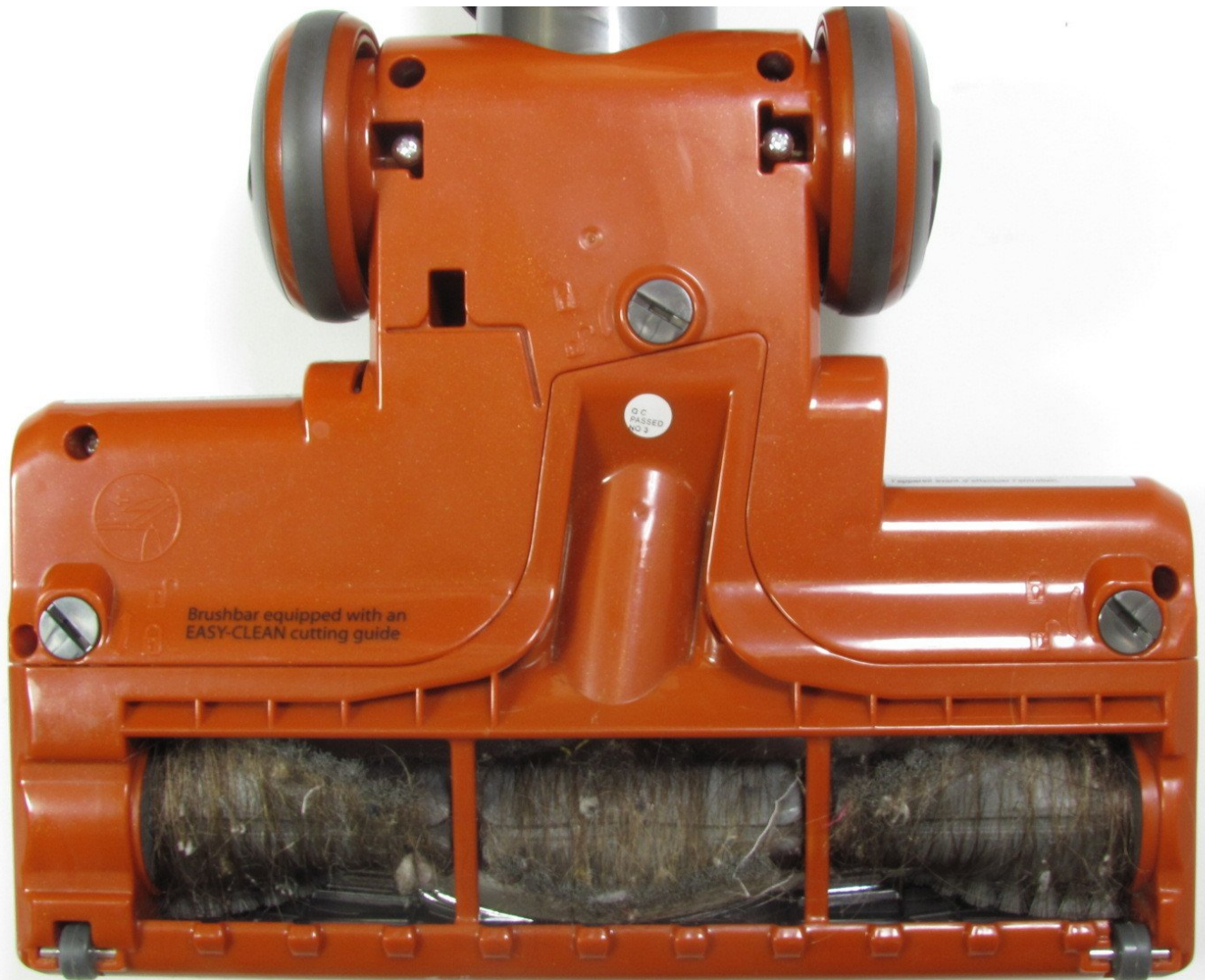




# Shark Rocket HV301 Rotary Belt Replacement

This guide is to help consumers remove the...

Written By: Trey Nahhas



## INTRODUCTION

This guide is to help consumers remove the rotary belt from their Shark rocket HV301. Be sure to have the proper tools and replacement parts available prior to beginning this guide.



### TOOLS:

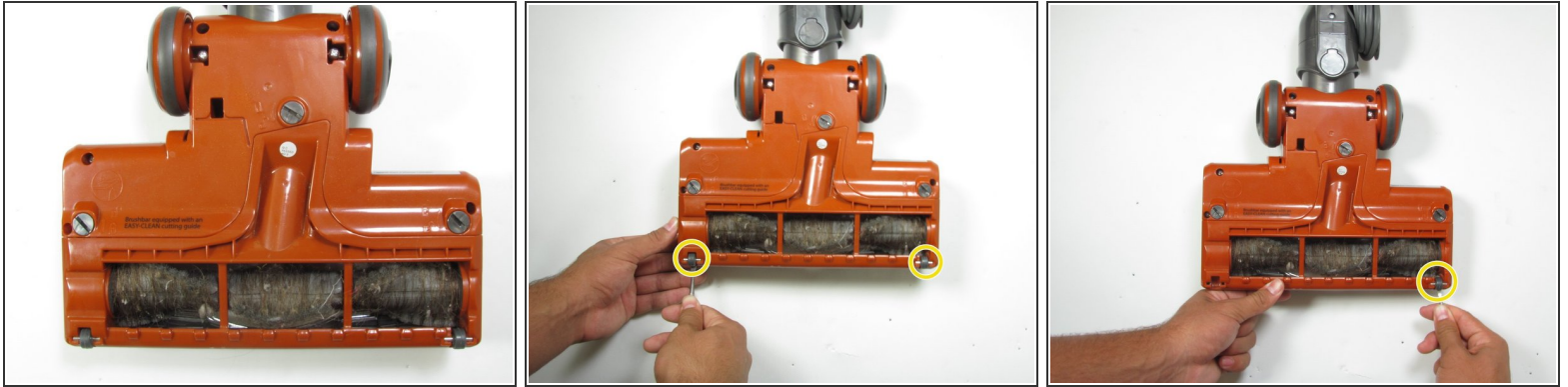
- [Spudger](#) (1)
- [Phillips #2 Screwdriver](#) (1)
- [iFixit Opening Tool](#) (1)
- [T15 Torx Screwdriver](#) (1)



### PARTS:

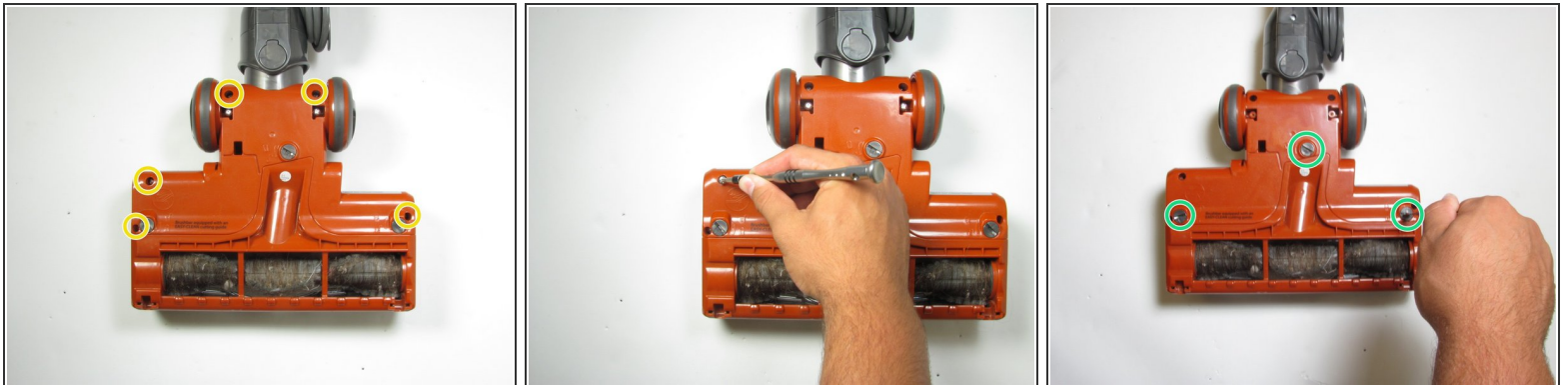
- [Rotary belt](#) (1)

## Step 1 — Rotary Brush



- Flip the vacuum so the bottom base is visible.
- Gently pry the bottom two wheels off with a plastic opening tool.

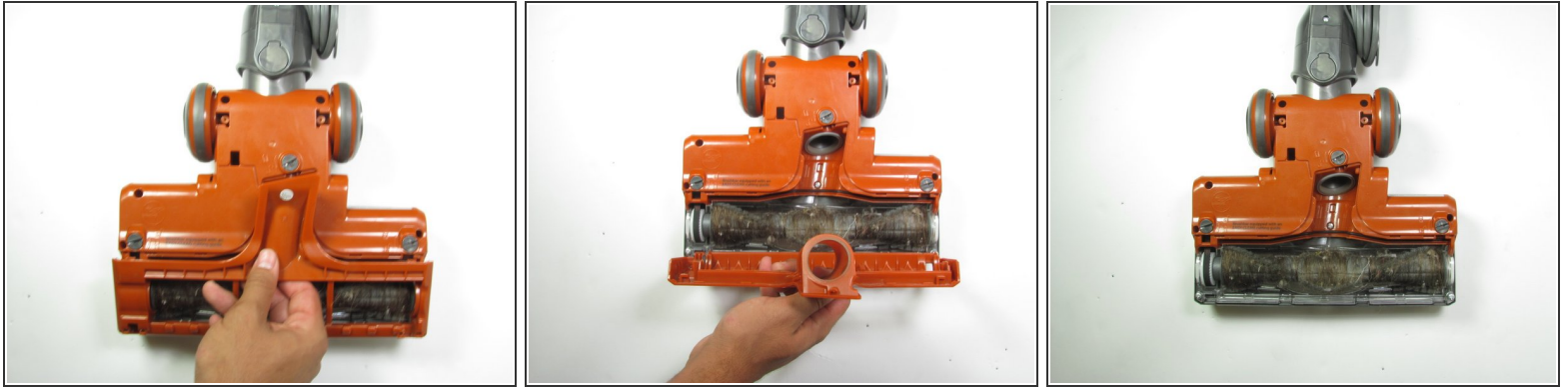
## Step 2



- Remove five visible screws with a Phillips #2 screwdriver.
- Locate and twist the three plastic screws to the unlock position with a quarter or flathead screwdriver.

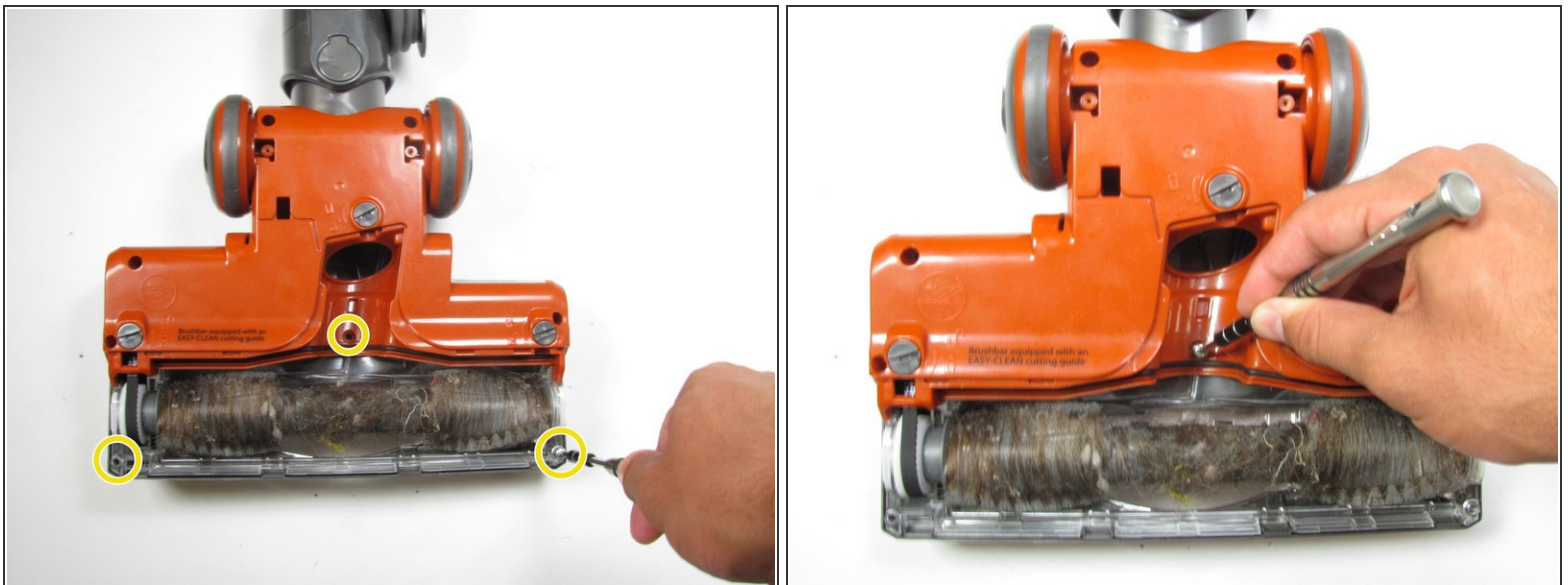


### Step 3



- Remove plate covering the roller brush.

### Step 4



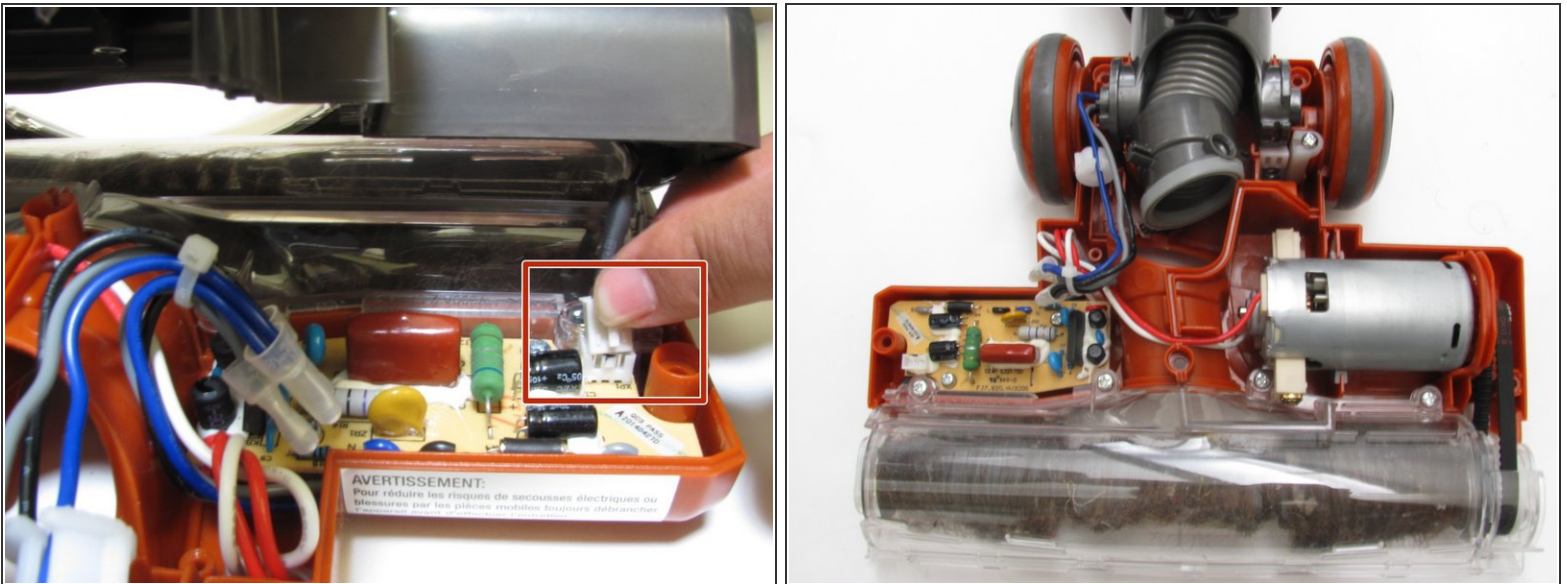
- Use a Phillips #2 screwdriver to extract the three screws revealed from removing the plate.

## Step 5



- Turn the vacuum over so the rotary brush is on the ground.
- Grab the vacuum on both sides of the hose and pull up to remove the top of the vacuum halfway.

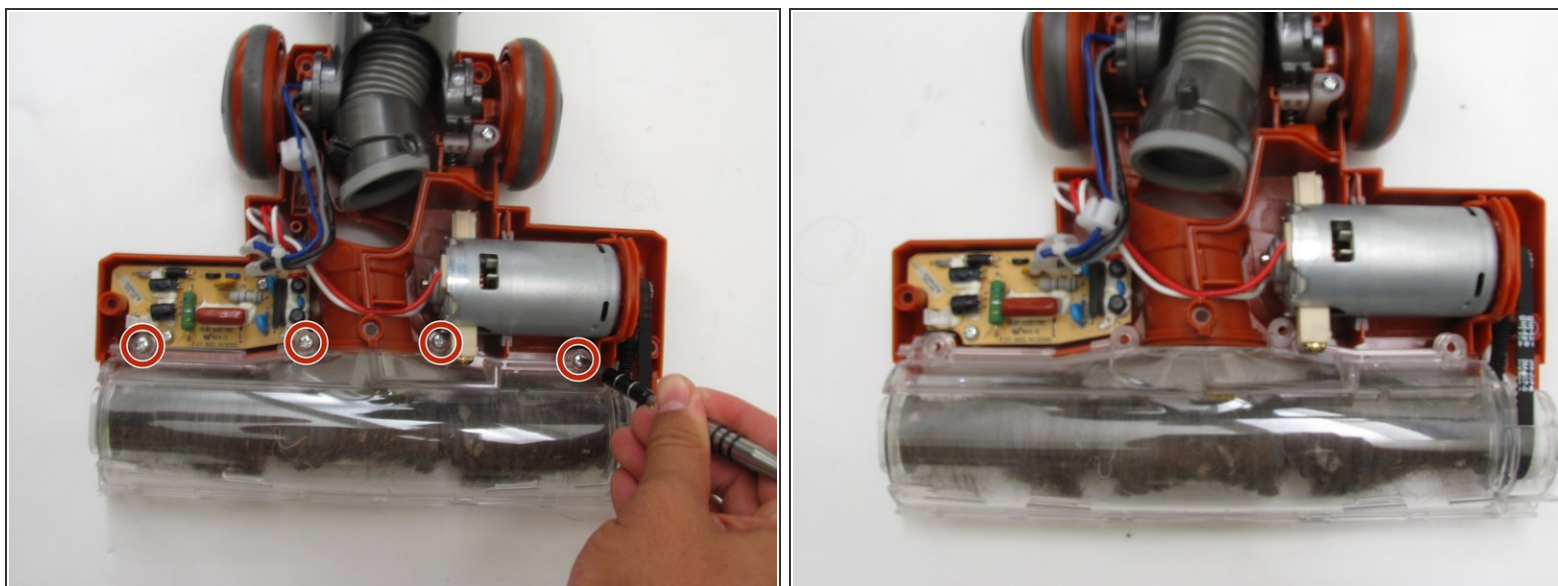
## Step 6



- Gently pinch the head of the cable and pull upwards until the casing disconnects from the vacuum.
- Proceed with removing the upper casing.

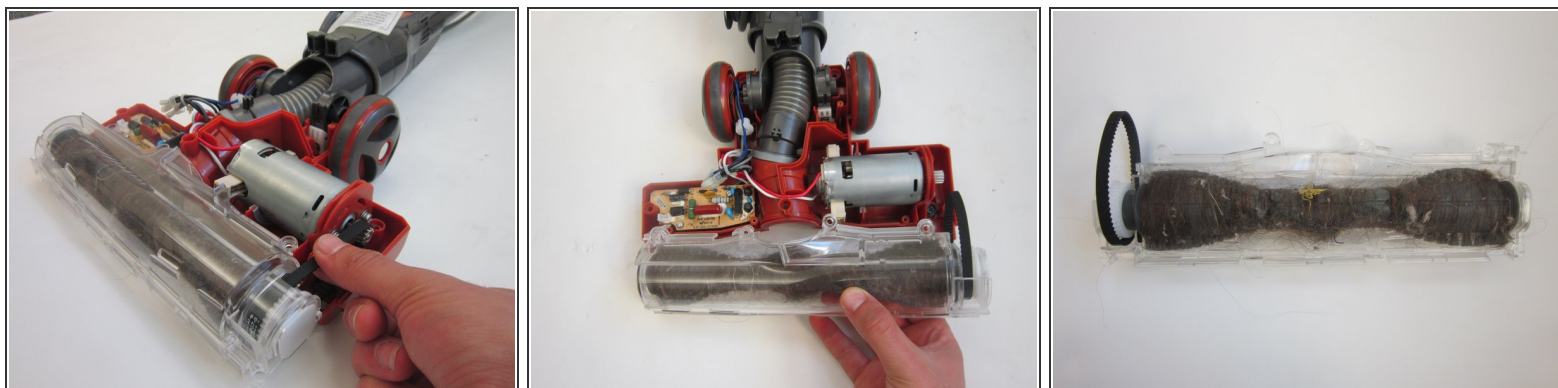


## Step 7



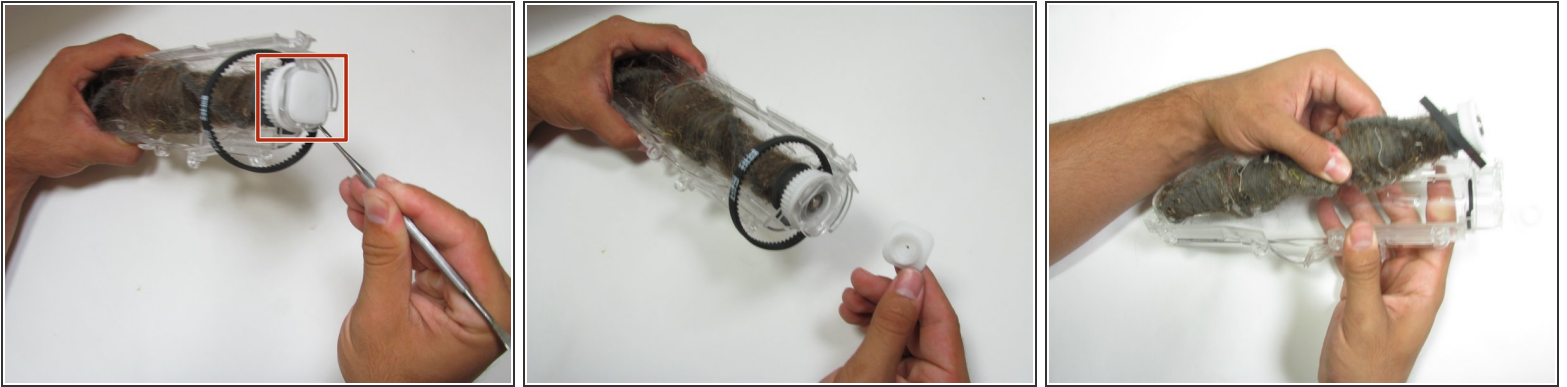
- Use a Phillips #2 screwdriver to remove the four visible screws securing the rotary brush to the vacuum.

## Step 8



- Remove the rotary belt on right side of vacuum from the bearing.
- Gently lift the casing to remove the belt and brush from the vacuum.

## Step 9



- Gently pry off the plastic casing on both sides of rotary brush.
- Lift the clear plastic shell from the rotary brush.

## Step 10



- Remove the rotary belt attached to the brush and replace it if needed.

## Step 11 — Rotary Belt



- Replace belt if torn or damaged.

To reassemble your device, follow these instructions in reverse order.