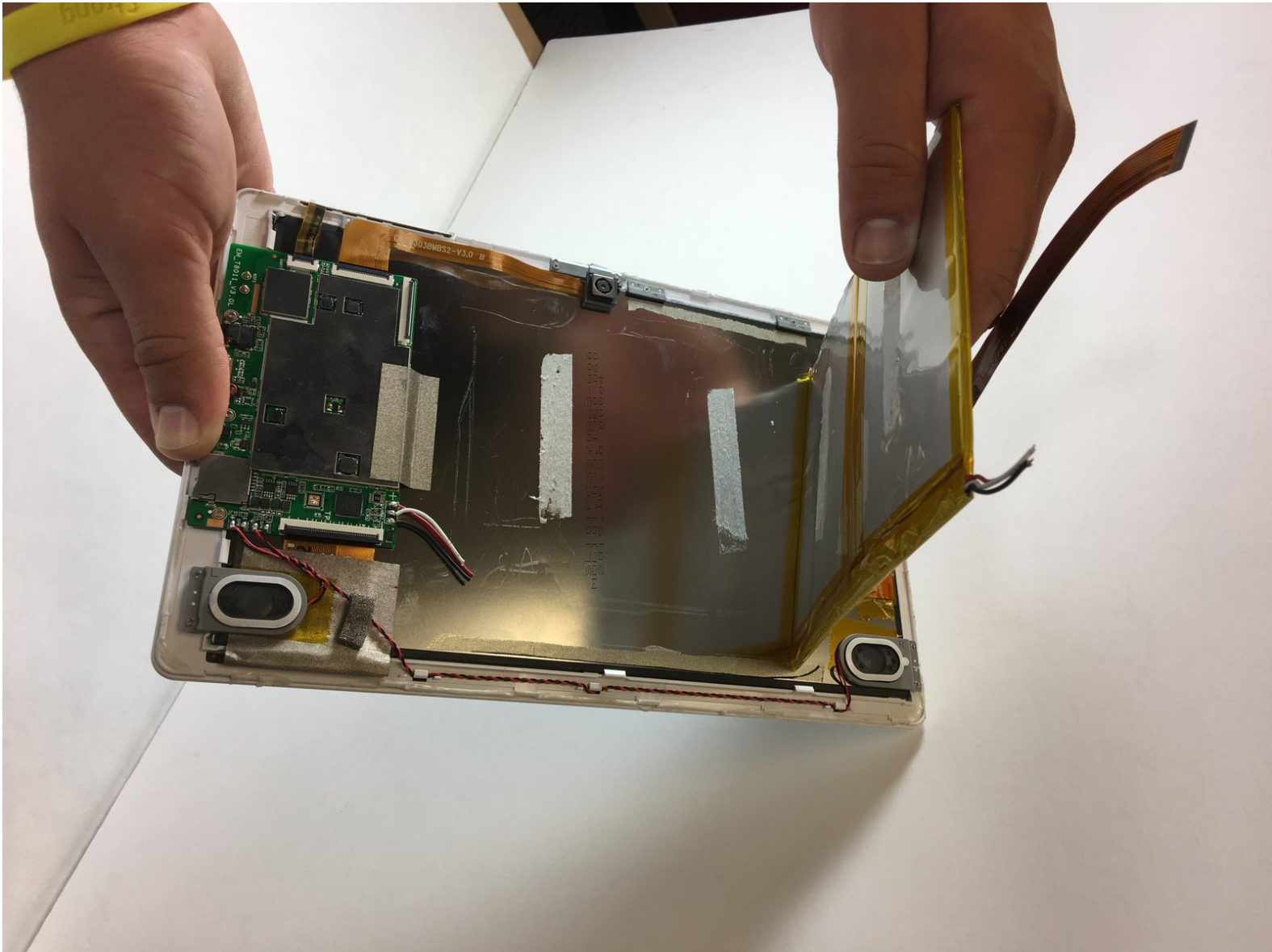




Insignia Flex 10.1 NS-P16AT10 Battery Replacement

This guide will instruct you on how to replace the battery of your Insignia Flex 10.1 NS-P16AT10.

Written By: Morgan Kidd



INTRODUCTION

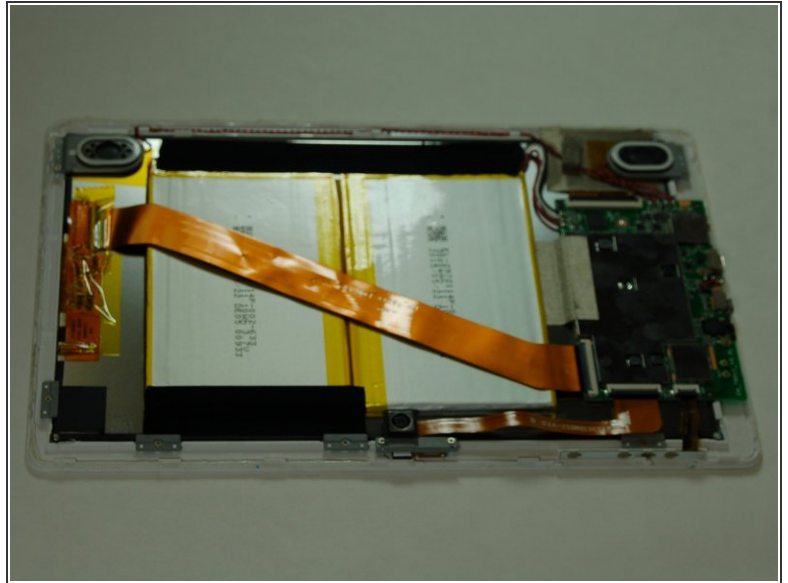
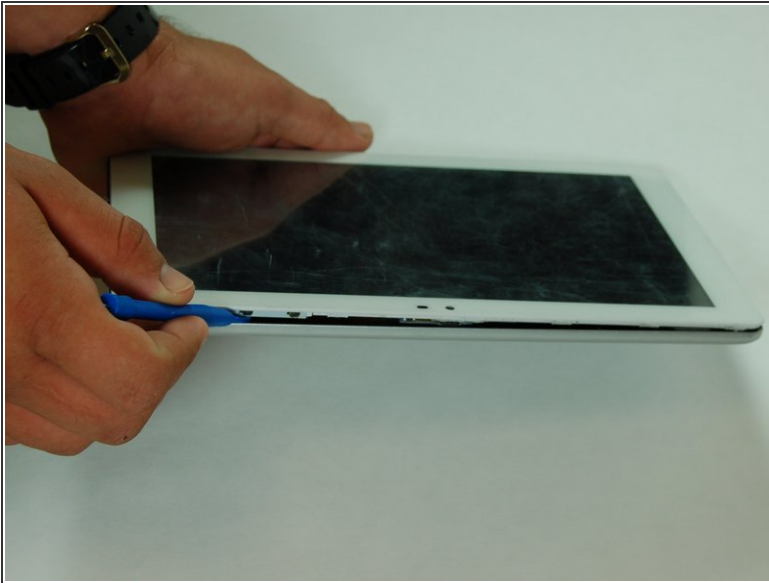
If your Insignia flex 10.1 NS-P16AT10 will not power on, you may need to replace your battery.




TOOLS:

- [iFixit Opening Tools](#) (1)
 - [Soldering Iron](#) (1)
-

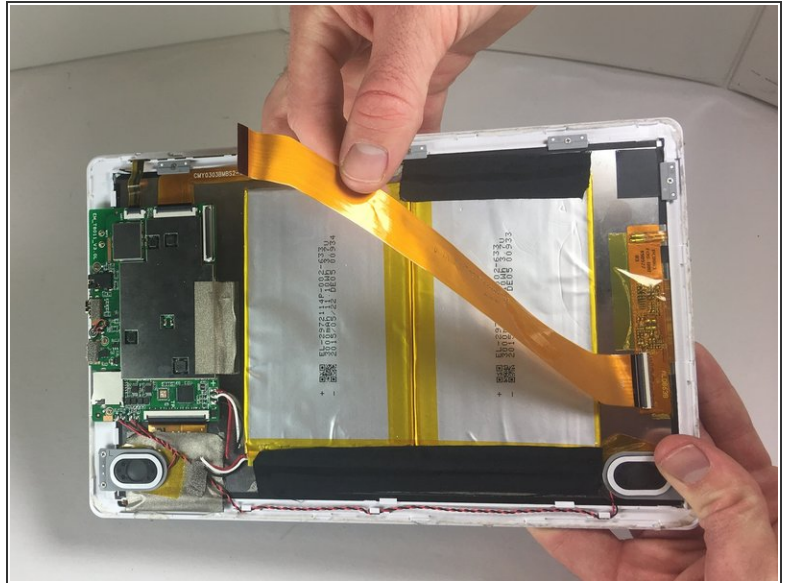
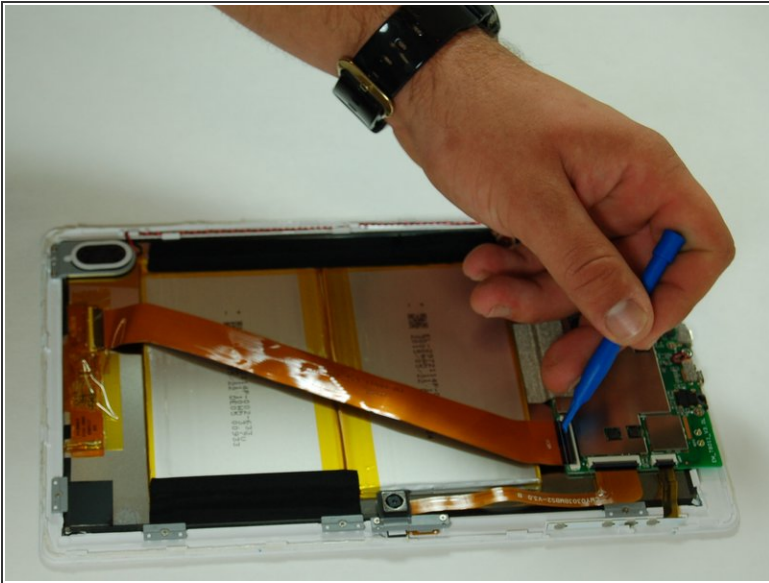
Step 1 — Battery



 Make sure your device is off and not connected to any power sources to avoid injury

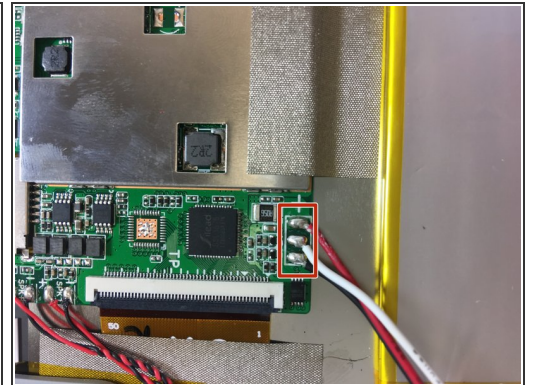
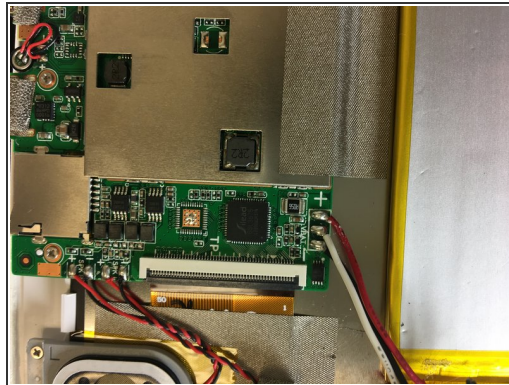
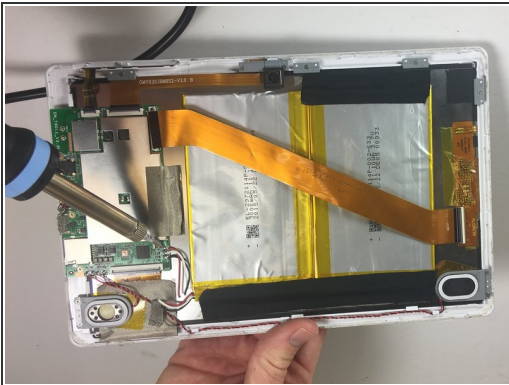
- Use a plastic opening tool to remove the rear panel from the front case.
 - Insert the plastic opening tool between the front case and rear panel. Use a prying motion to lift the front case from the rear panel.
 - Work the tool around the perimeter of the device until the front and rear panels become separate.
- ⓘ The volume rocker and power button will become free from the device when the front and rear panels are separated from each other. Do not worry. These pieces are easily put back into place when reassembling the tablet.

Step 2



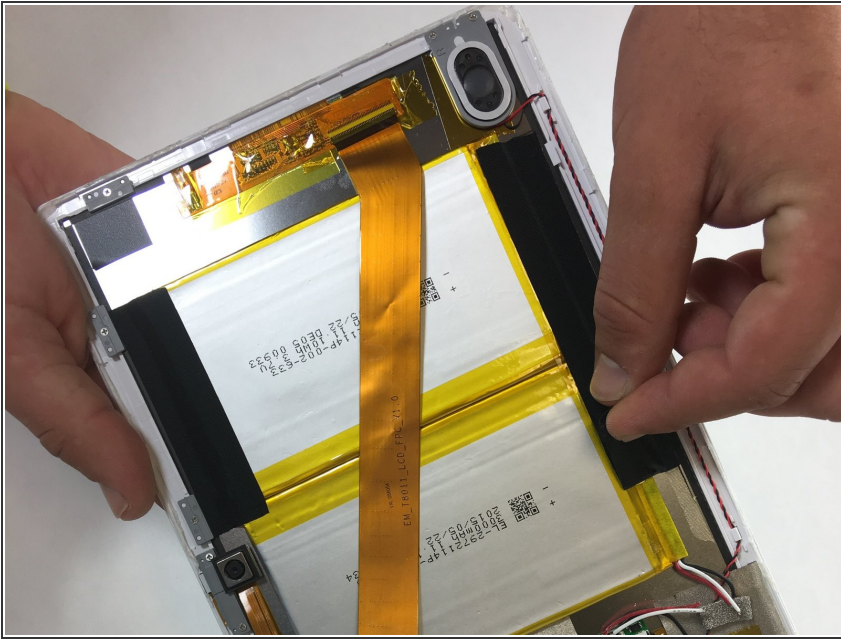
- Use a plastic opening tool to flip the ribbon connector up in order to free the ribbon cable from the motherboard.

Step 3



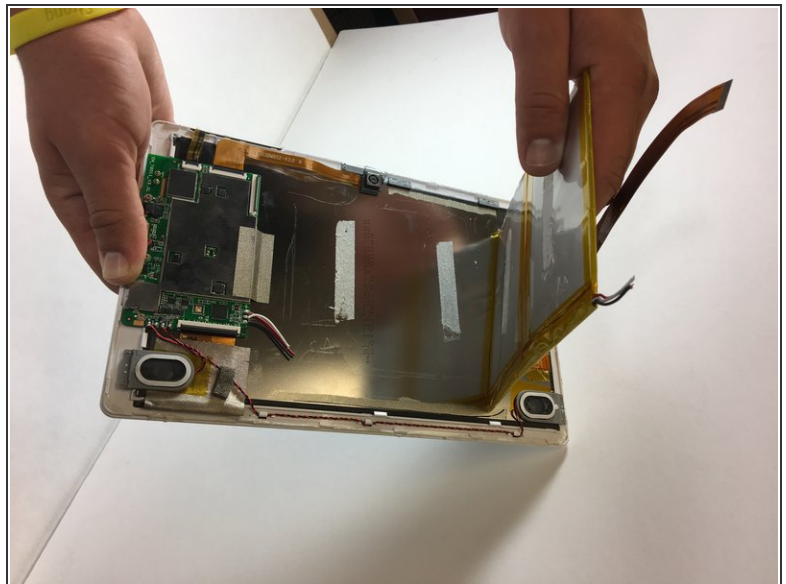
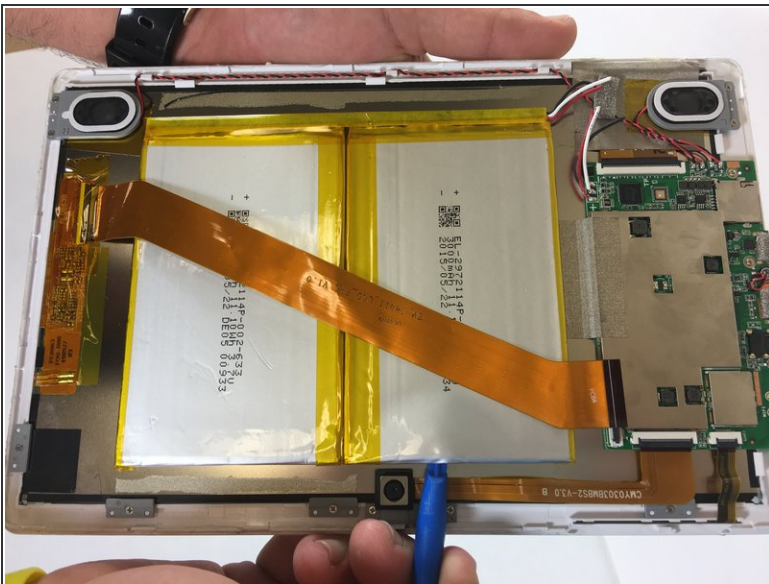
- Free the battery from the motherboard by desoldering the red, white, and black connections one by one.
 - For soldering instructions, visit [this](#) guide.
- ⚠ Remove the soldering tip immediately once the wire has become free. Too much heat can damage the motherboard.

Step 4




- Peel the black tape up that is attached to the battery and front case.

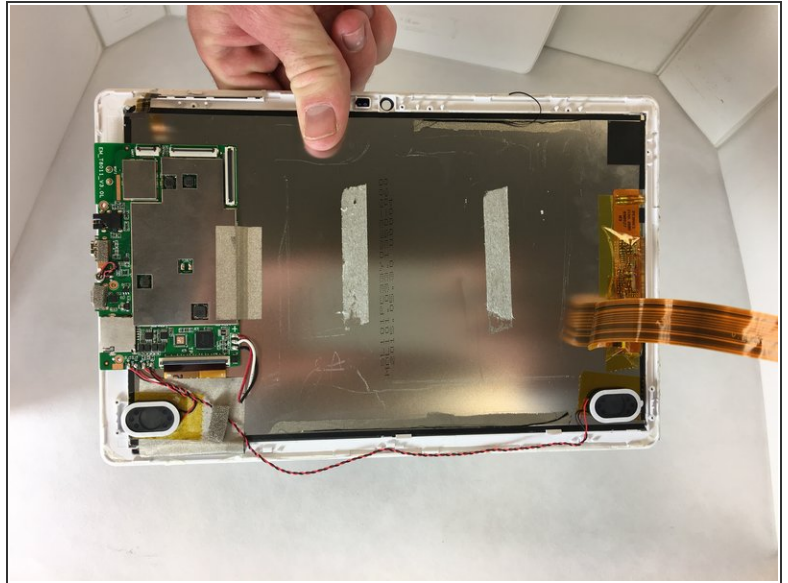
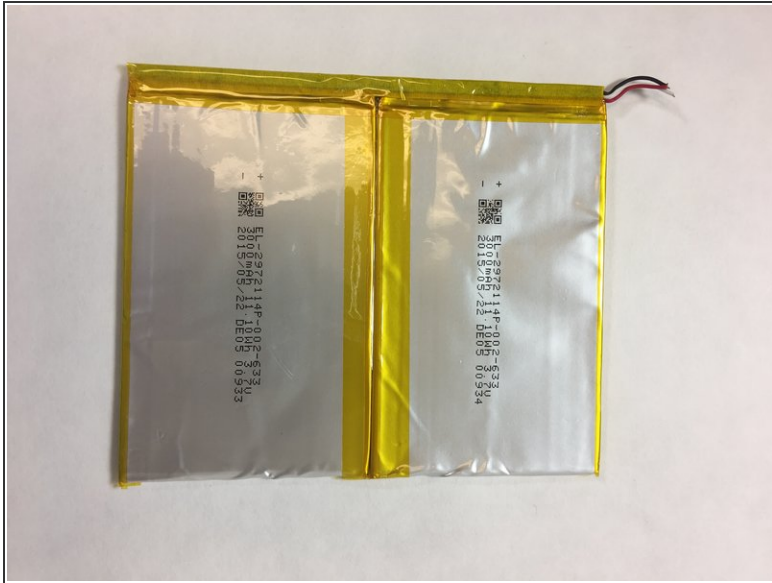
Step 5



- Use a plastic opening tool to remove the battery from the front case.
- Place the plastic opening tool between the battery and front case. Work the tool around the perimeter of the battery until the battery is free.

 Do not bend or puncture the battery, or the battery will leak.

Step 6



- The battery is now removed from the device. Replace the battery.

To reassemble your device, follow these instructions in reverse order.