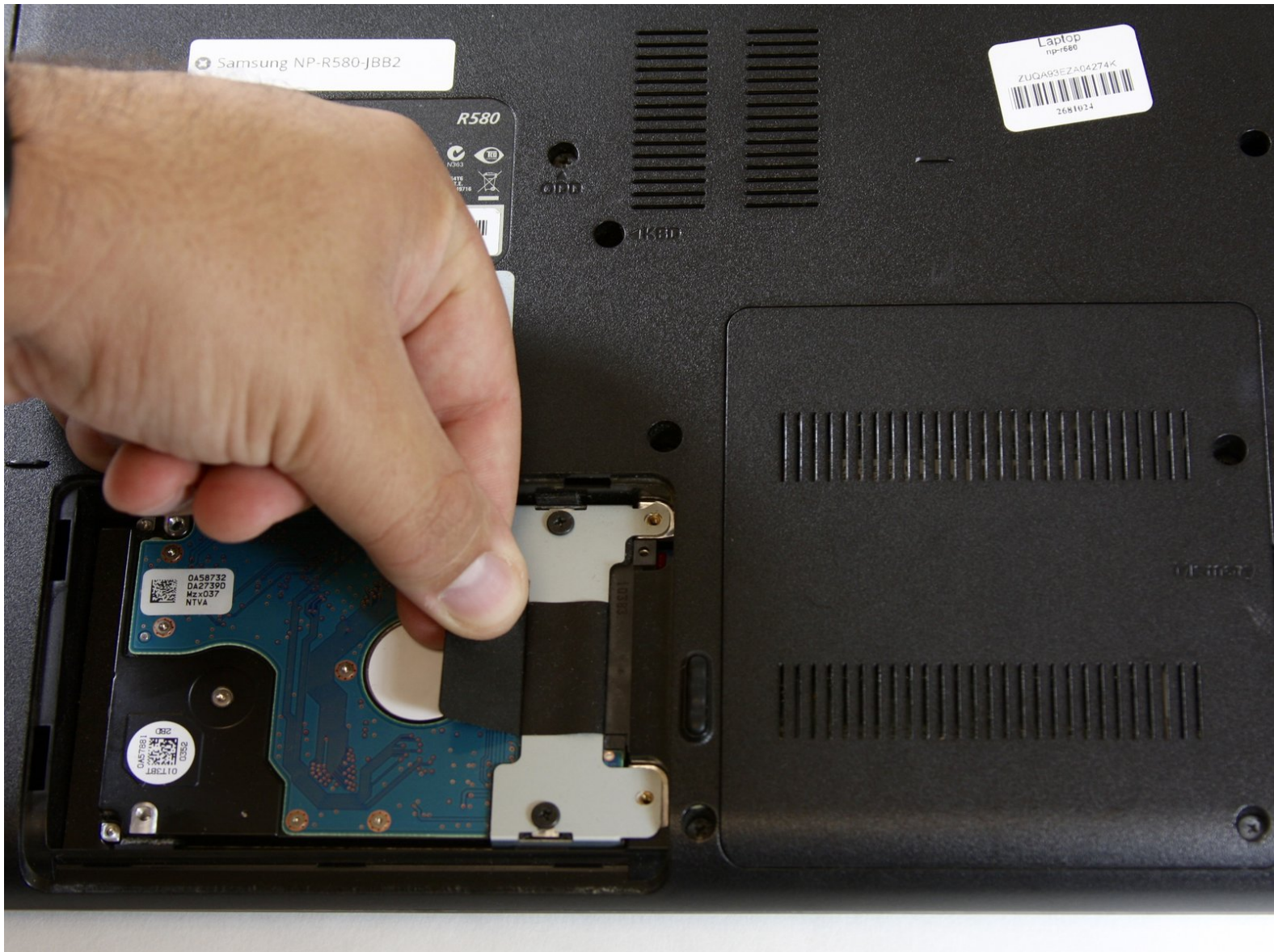




Samsung NP R580 JBB2 Hard drive Replacement

This guide will show how to remove the back plate cover labeled HDD by removing screws so that the hard drive can be accessed and replaced.

Written By: Brian Adamson

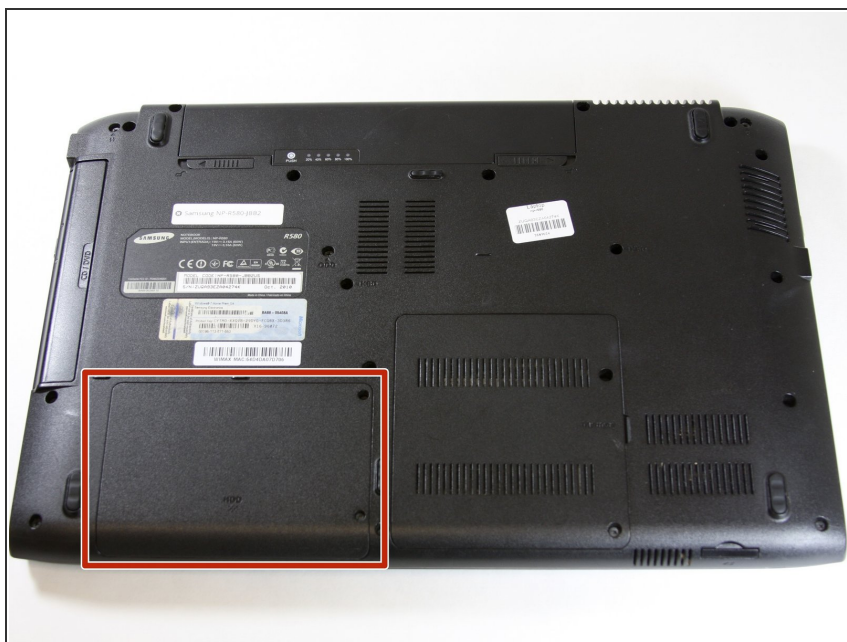




TOOLS:

- [Phillips #0 Screwdriver](#) (1)
-

Step 1 — Hard drive



- ⚠ Power off laptop before starting.
- Find the back plate cover labeled HDD.

Step 2



- Remove both of the 5 mm Phillips head screws on the HDD back plate cover.

Step 3



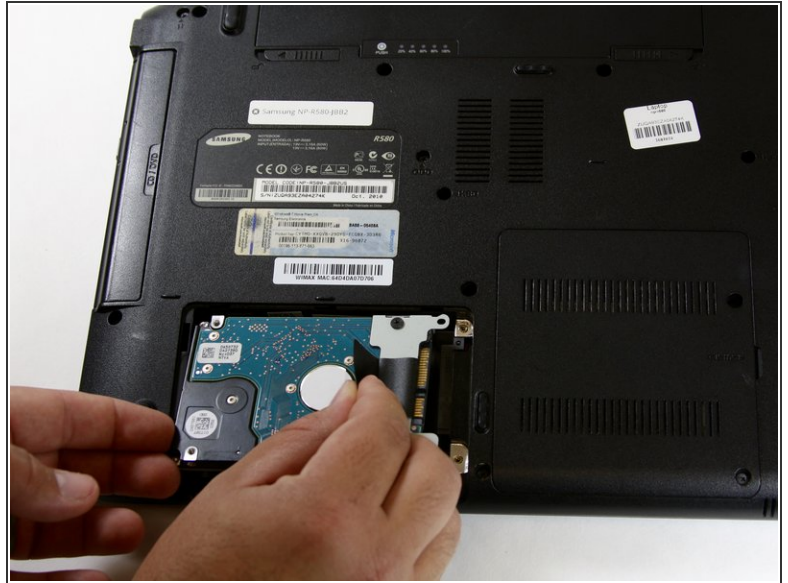
- Pull down while applying pressure to release HDD back plate cover and then lift the cover upward.

Step 4



- Find the black plastic tab on the hard drive.

Step 5



- Grasp the tab and pull it to the left until the hard drive releases its connection and is able to be lifted free.

To reassemble your device, follow these instructions in reverse order.