



Samsung Galaxy View Battery Replacement

This guide will show you how to remove and replace the battery for the Samsung Galaxy View.

Written By: Roger Pena



INTRODUCTION

This guide will first require the removal of the kickstand in order to access the battery. Removal of the back panel will require some force, and the help of a friend may be necessary. While removing the back panel there will be loud popping noises. This sound is the magnetized latches snapping off and is not doing damage to the device.



TOOLS:

- [Heavy-Duty Spudger](#) (1)
- [iFixit Opening Tools](#) (1)
- [Metal Spudger](#) (1)
- [Phillips #0 Screwdriver](#) (1)



PARTS:

- [Lithium-Ion 11.3V 5700mAh battery](#) (1)

Step 1 — Kickstand



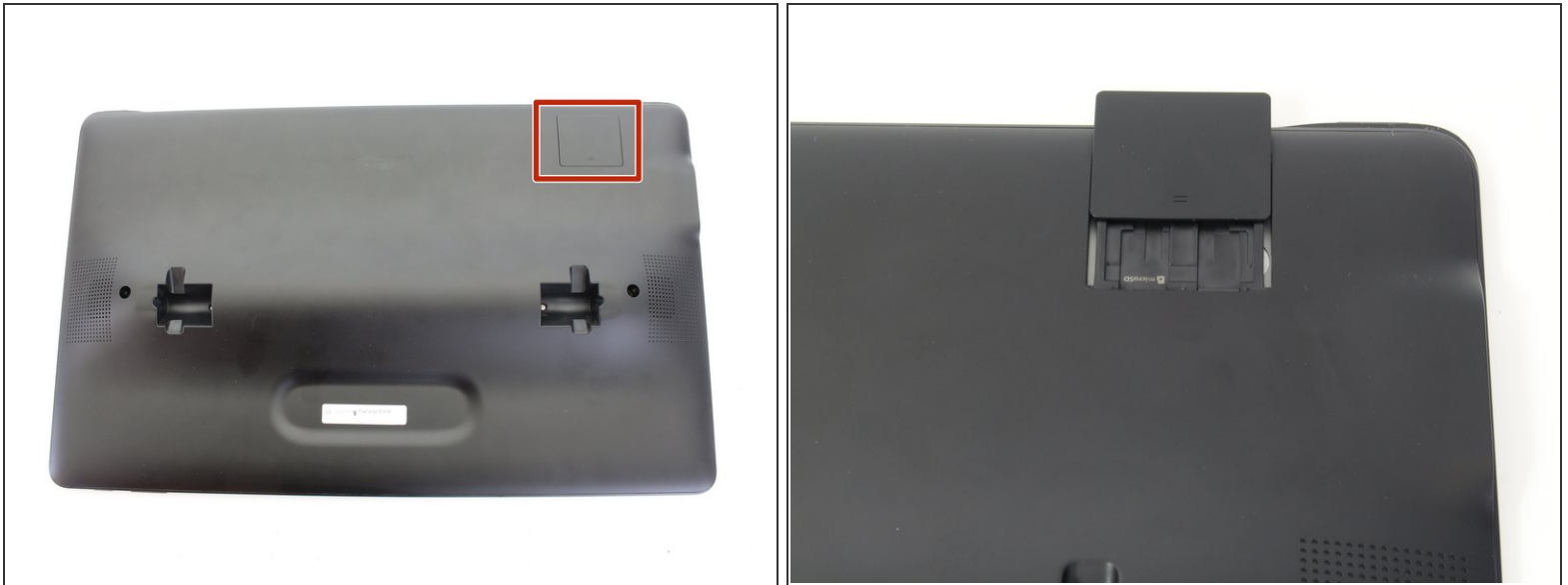
- Place the device on a hard flat surface with its screen facing downwards.
- Rotate the the kickstand so that the handle grip hole is up in the air and not touching the back of the tablet.

Step 2



- Stick the pointy end of the spudger into the circular opening of the leftmost metallic latch.
- With the spudger still inserted, pry the spudger to the right pushing the latch opening along with it.
- Once the latch is moved to the right, pull up on the left side of the kickstand, releasing it from the back of the tablet.
- Repeat the previous steps for the rightmost latch, and then lift the kickstand off the back of the tablet.

Step 3 — Battery



- Check the device is completely turned off.
- Slide open the SD compartment tab, and remove the SD card to ensure all data is saved.

Step 4




- Remove the 4 screws (4 mm in length) using the Phillips #0 screwdriver.

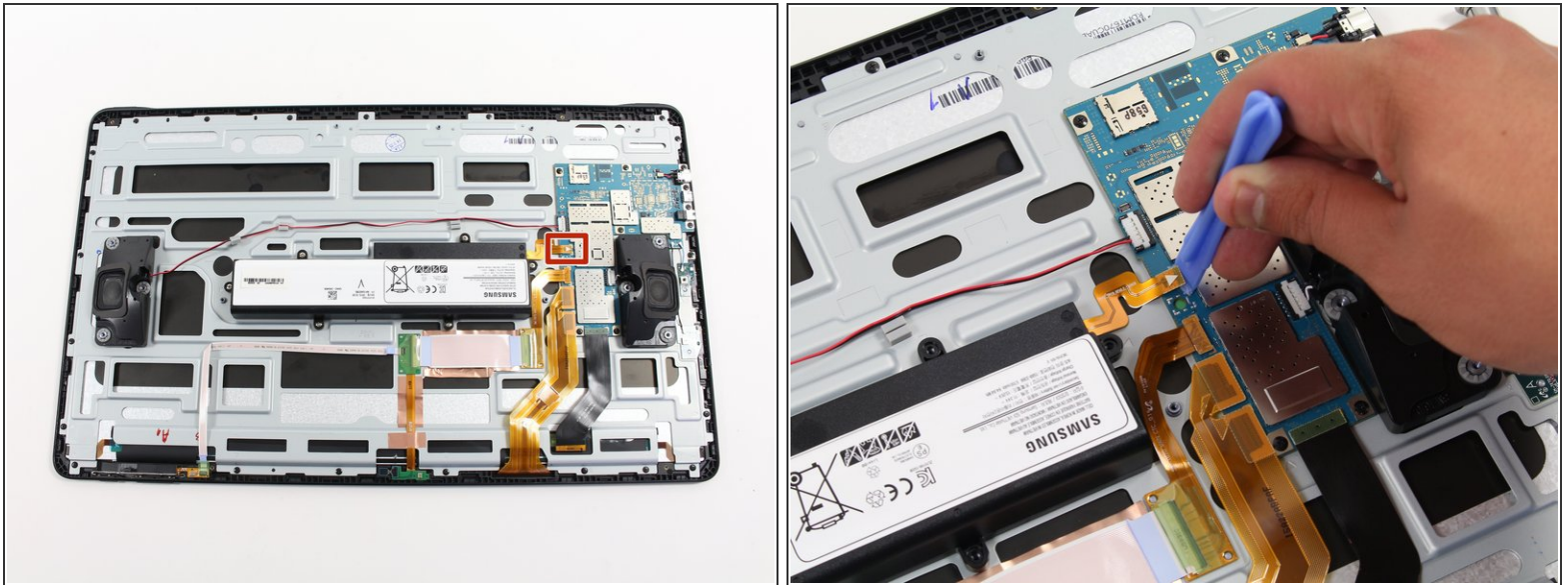
Step 5



- Insert the plastic opening tool between the seam of the back panel and the front casing to create an initial opening.
- Insert the metal spudger within the opening.
- Move the metal spudger down the seam, prying the back panel open as you go.
- Once a large enough opening is made, pry the entire back panel off with your hand.

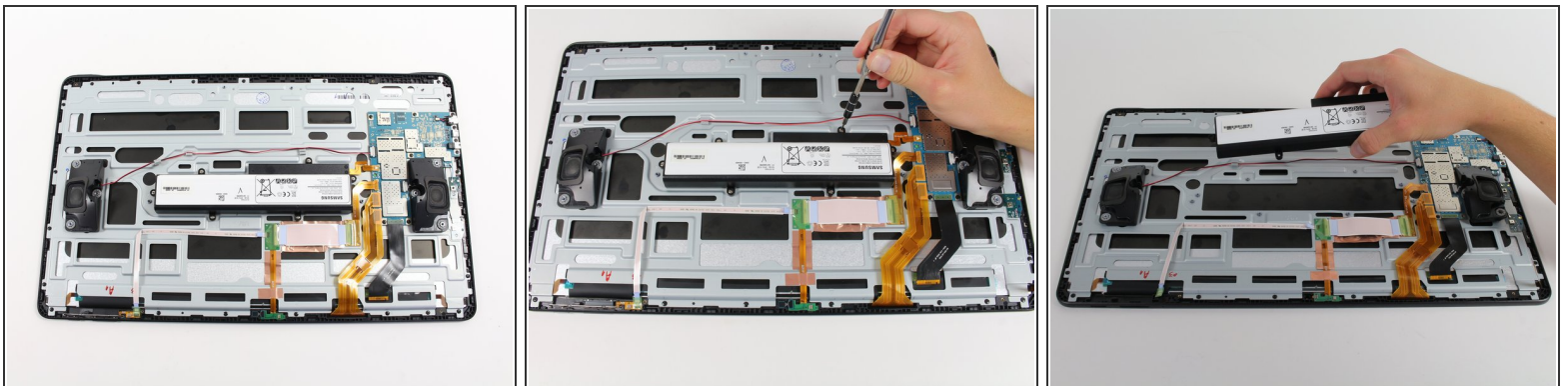
 You will hear loud popping from the magnetized latches. This is not causing damage to the device and will require some force to open.

Step 6



- Using the plastic opening tool, lift off the orange press-fit connector (marked with a white arrow-head) where it attaches to the motherboard.

Step 7



- Remove the 6 screws (4 mm in length) using the Phillips #0 screwdriver.
- Remove the battery from the device.

To reassemble your device, follow these instructions in reverse order.