



Apple Time Capsule Model A1254 Internal Power Supply Replacement

The internal power supply is critical for your...

Written By: Keaton Frahmman



INTRODUCTION

The internal power supply is critical for your device to turn on. Follow our troubleshooting page to identify if the internal power supply is broken or if it is the external power cord. The power cord will be a much easier replacement if so.



TOOLS:

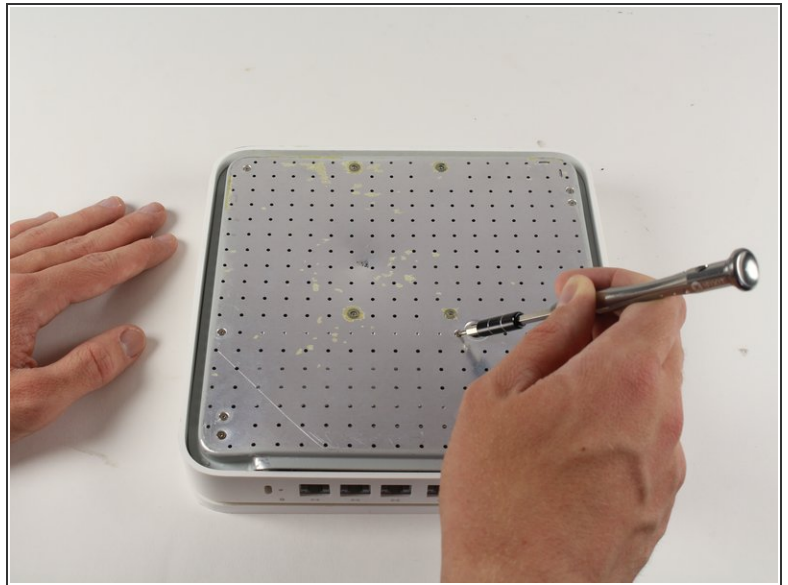
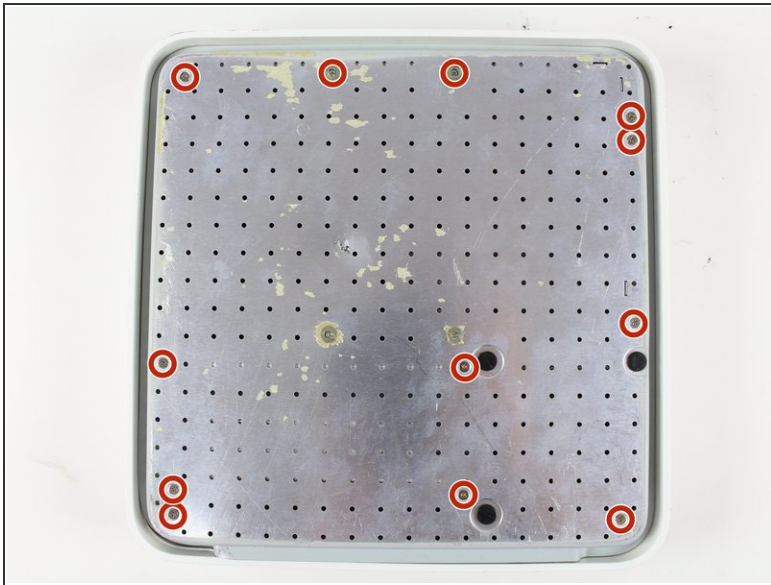
- [Metal Spudger](#) (1)
 - [Phillips #00 Screwdriver](#) (1)
-

Step 1 — Back Plate



- Turn the device upside down to reveal the rubber section of the back plate. Using a metal spudger, carefully wedge the blunt tip into the space between the aluminum back plate and the rubber, separating the two pieces.
- ⓘ This may take a few minutes to pry the rubber off completely. Once you are able to get a grip on the rubber it is easier to peel it off using your hands.
- Depending on air temperature and how set the adhesive is, you may need to spend some time warming the back plate with a hot plate (on low) or hair dryer.
- ⓘ Don't worry about re-applying adhesive to the rubber; the remaining adhesive has plenty of strength to affix itself to the aluminum.

Step 2



- Remove the ten 3mm screws with a Phillips #00 screwdriver.
- ⓘ The screws with adhesive covering **do not** need to be removed.

Step 3



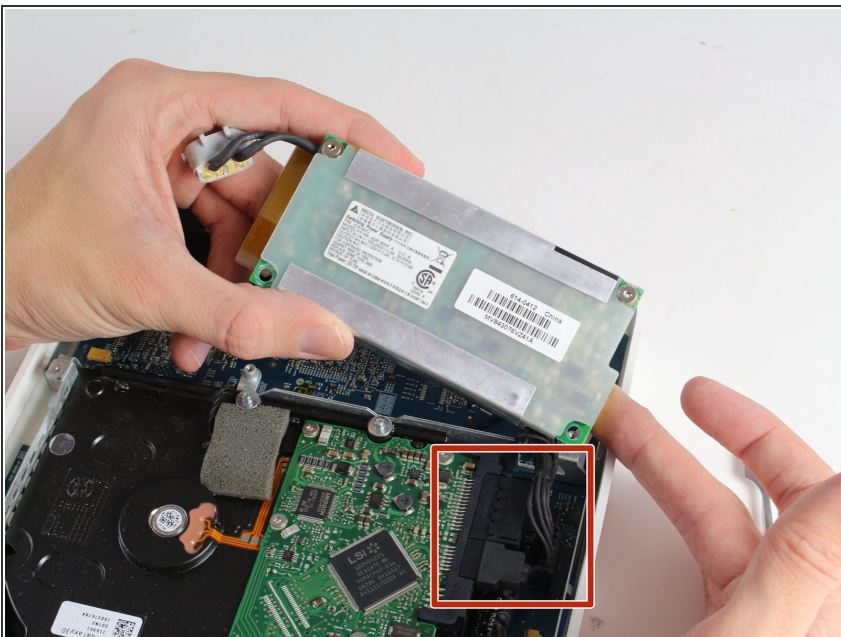
- The fan affixed to the back plate is connected to the logic board. A small wire must be detached to fully remove the back plate.
- Pull the base of the wire close to the logic board and the connector will pop off.

Step 4 — Internal Power Supply Replacement



- Remove the external connector from its housing by lifting it up, then out.
- Lift the internal power supply brick out of the device.
- ⓘ You may have to wiggle the brick slightly when removing it, but it will lift straight up and out as nothing else is holding it down.

Step 5



- Disconnect the SATA connector from the hard drive.
- ⓘ This cable does not have a locking mechanism so it can just be pulled out.

Step 6



- Disconnect the final power cable from the logic board.
- ⓘ Be careful when pushing in the tab on the logic board connector to release the cable lock.

To reassemble your device, follow these instructions in reverse order.