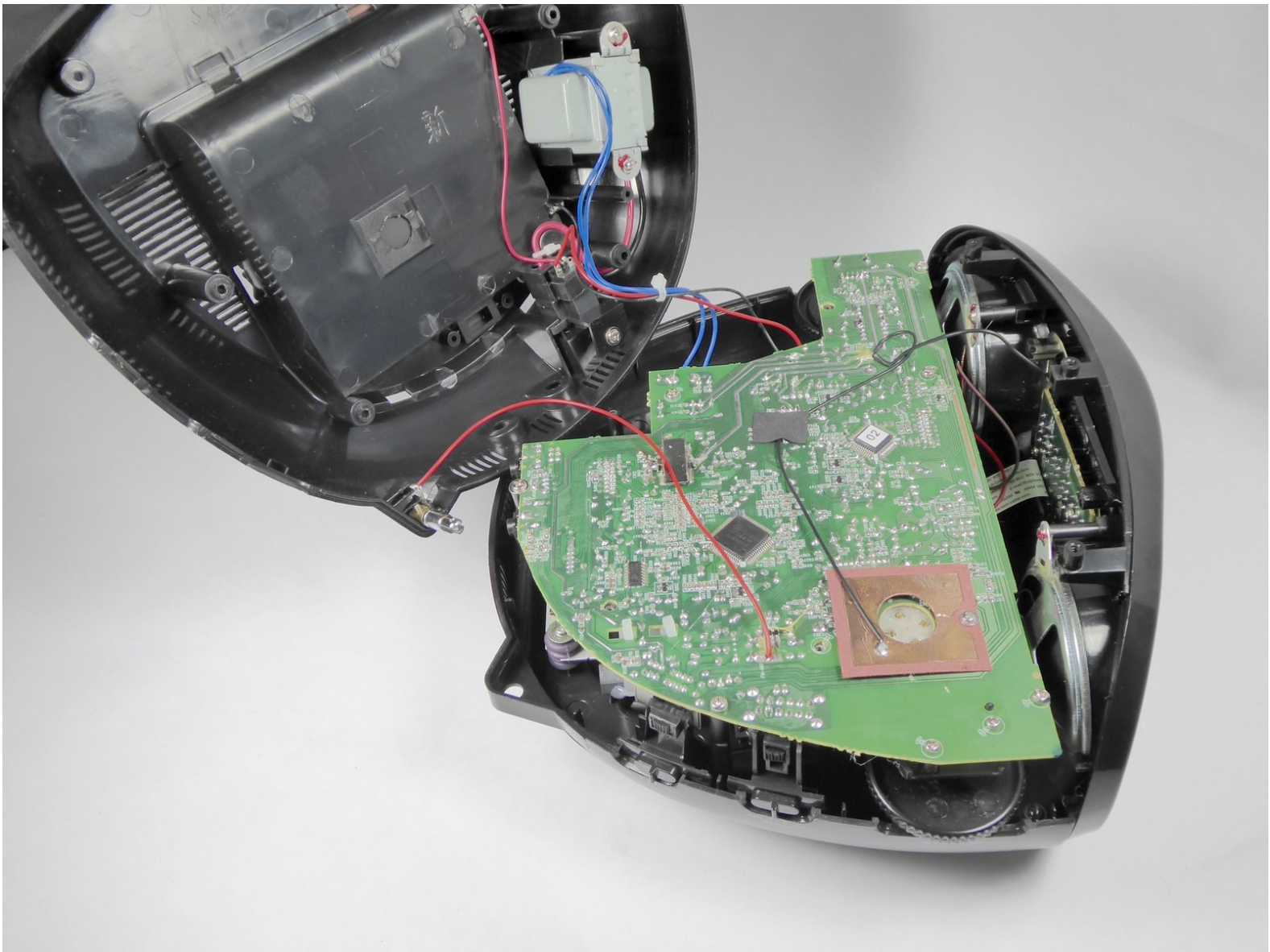




Insignia NS-B4111 Motherboard Replacement

Your device might not power on even if you have replaced the batteries. This guide will teach you how to easily disassemble and replace your motherboard so your device can power on again.

Written By: Kristin Yoshioka



INTRODUCTION

This guide will show you how to replace the motherboard on the device.



TOOLS:

- [Soldering Iron](#) (1)
 - [iFixit Opening Tools](#) (1)
 - [64 Bit Driver Kit](#) (1)
-

Step 1 — Battery



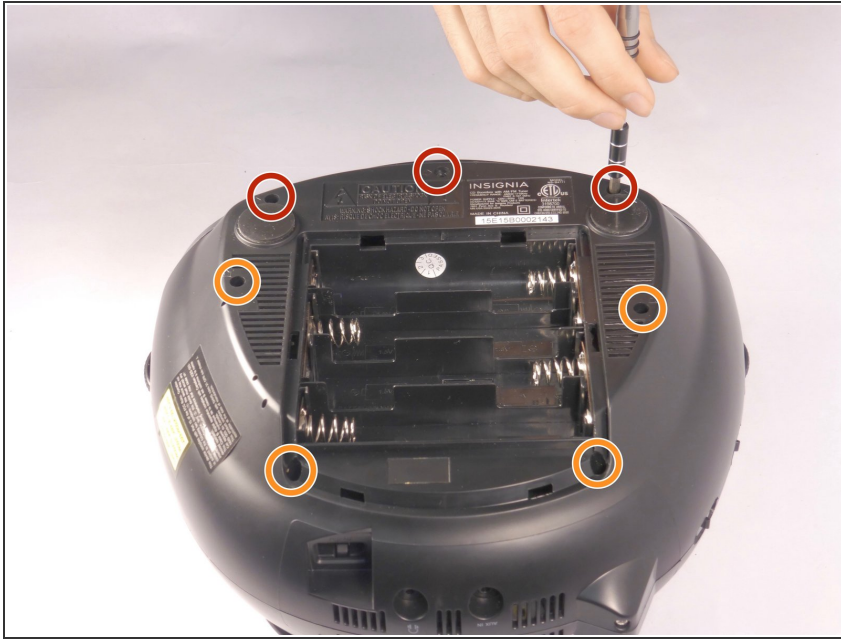
- Unplug and remove the power cord. Turn the boombox upside down.
- Grip the sides of the case and use your thumbs to pop open the battery cover.

Step 2



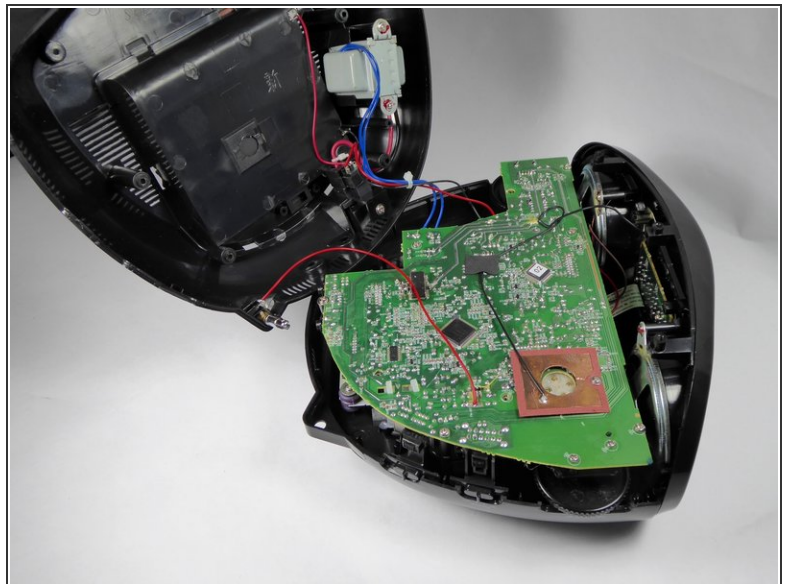
- Pry out the batteries with your fingers.

Step 3 — Casing



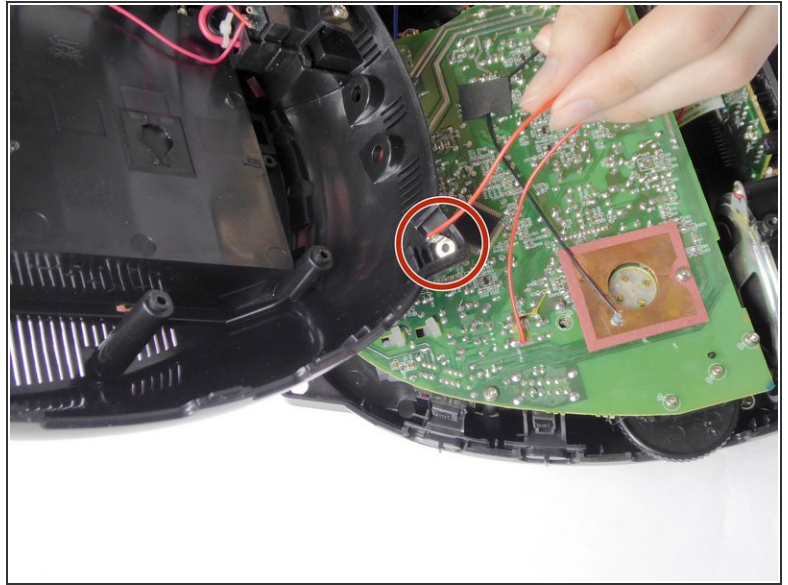
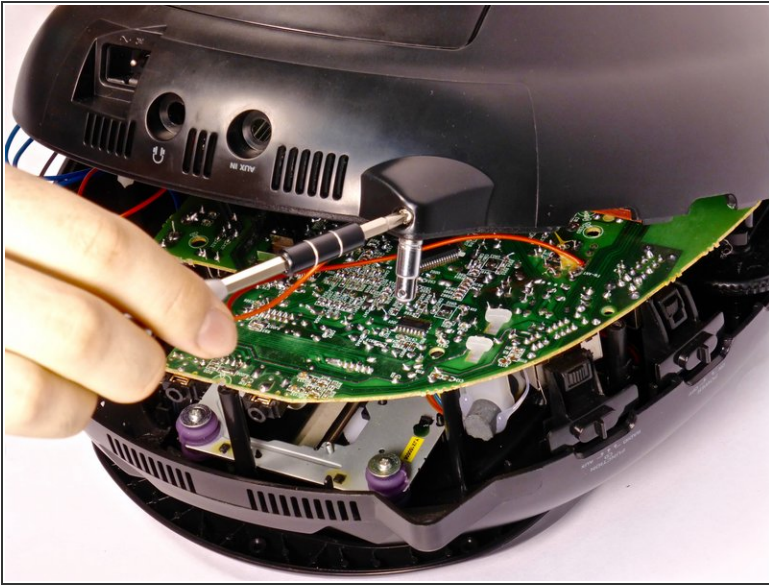
- Turn the boombox upside down again. With the Phillips PH1 or the Flathead #3 screwdriver, remove the three 14mm black screws.
- Remove the four 18mm chrome screws with the Phillips PH1 screwdriver.

Step 4



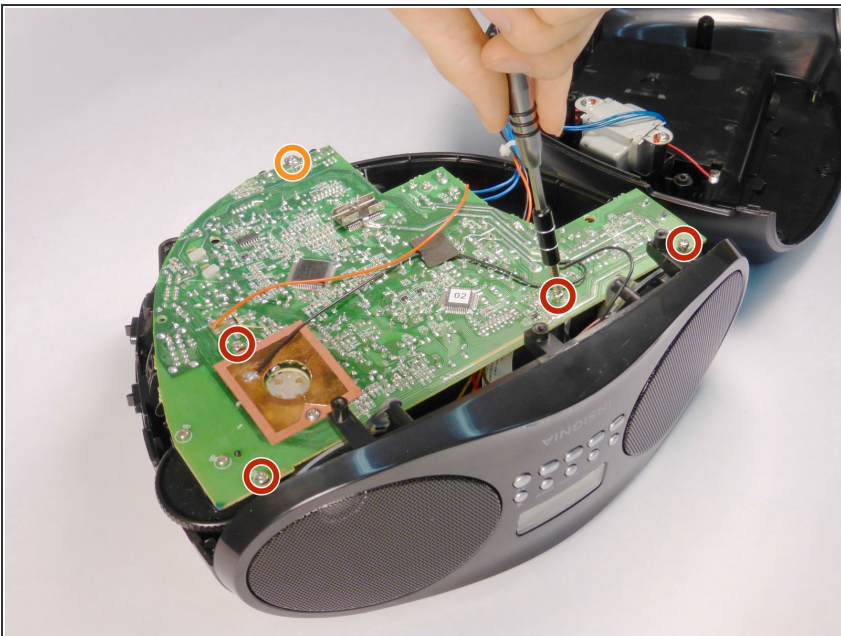
- Gently remove the bottom half of the casing from the top half of the casing.
- ⓘ The antenna base is connected to the motherboard by a red wire. This wire will prevent the two halves from separating completely.

Step 5 — Antenna Base



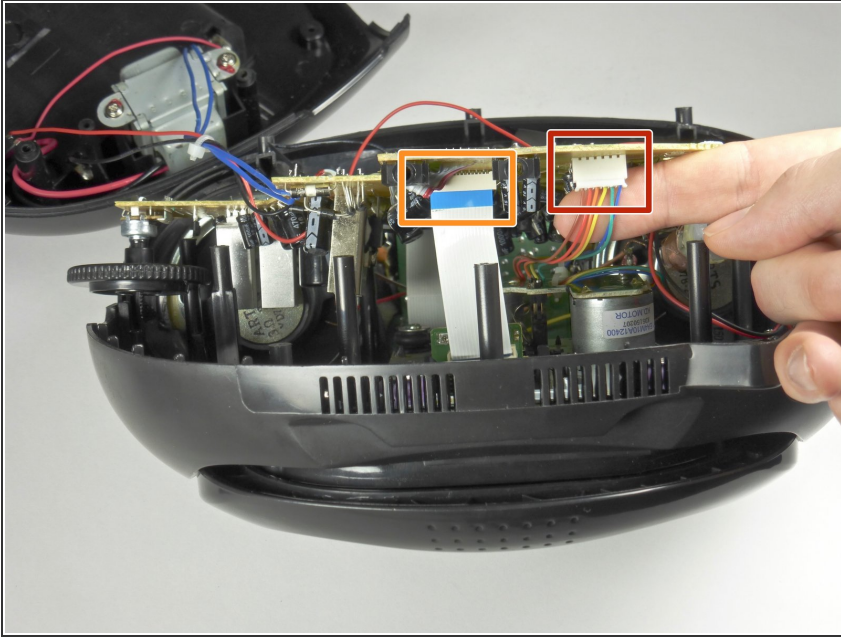
- Remove the 10mm chrome screw from the antenna base with the Phillips PH1 screwdriver. Remove the antenna base from the casing.
- This red wire will now be loose and you can move it out of the antenna base slot.

Step 6 — Motherboard



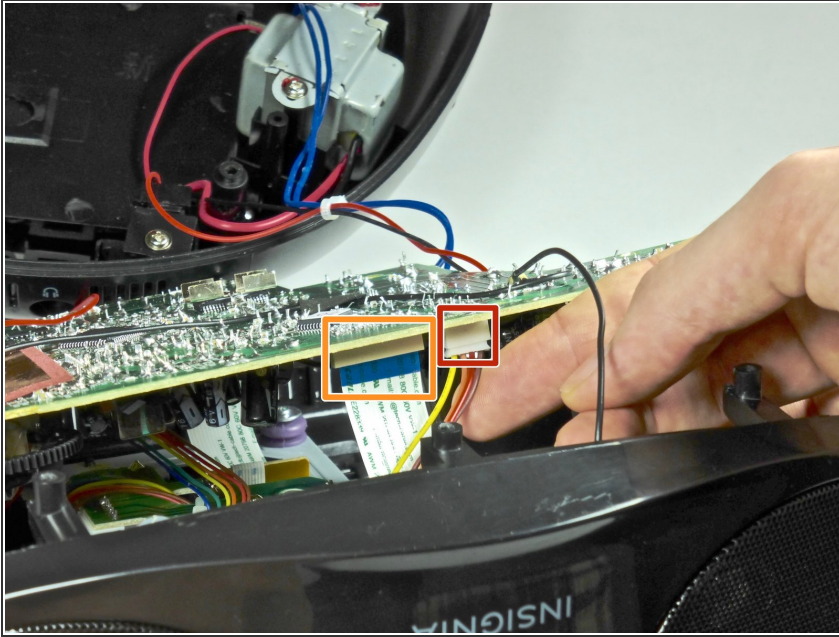
- Unscrew the four 12.5mm screws with the Phillips PH1 Screwdriver.
- Unscrew the one 10mm long screw with the Phillips PH1 Screwdriver.

Step 7



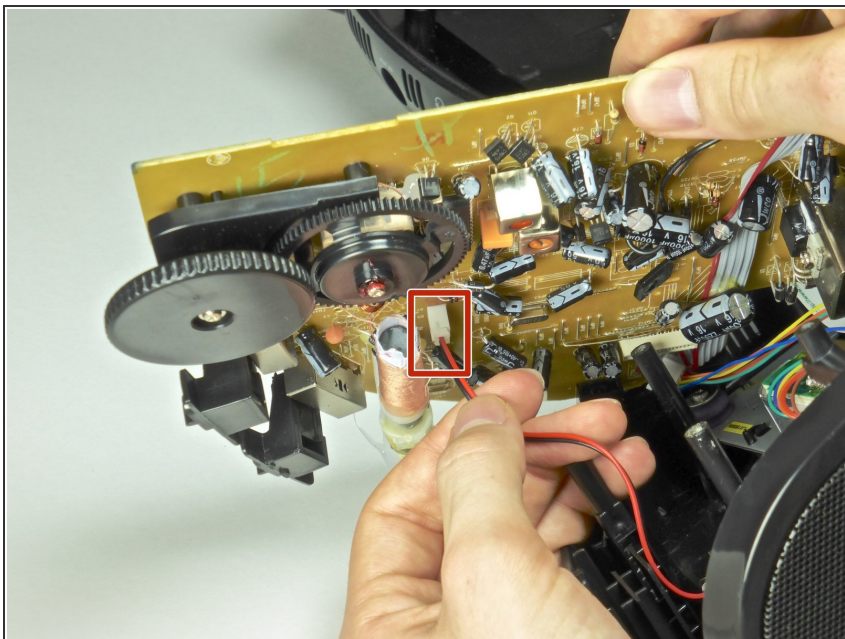
- Orient the device so that the back is facing you.
- Unplug the six pin male/female header from its socket on the motherboard. The wires on the header are these colors: burgundy, red, orange, yellow, green, and blue.
- ⓘ Use a tweezer if you find it hard to pull the header out with your fingers.
- Gently pull out the ribbon cable from its socket on the motherboard.
- ★ Pay attention to the orientation of the header and the ribbon cable. Replacing the wires the wrong way may short circuit the board.

Step 8



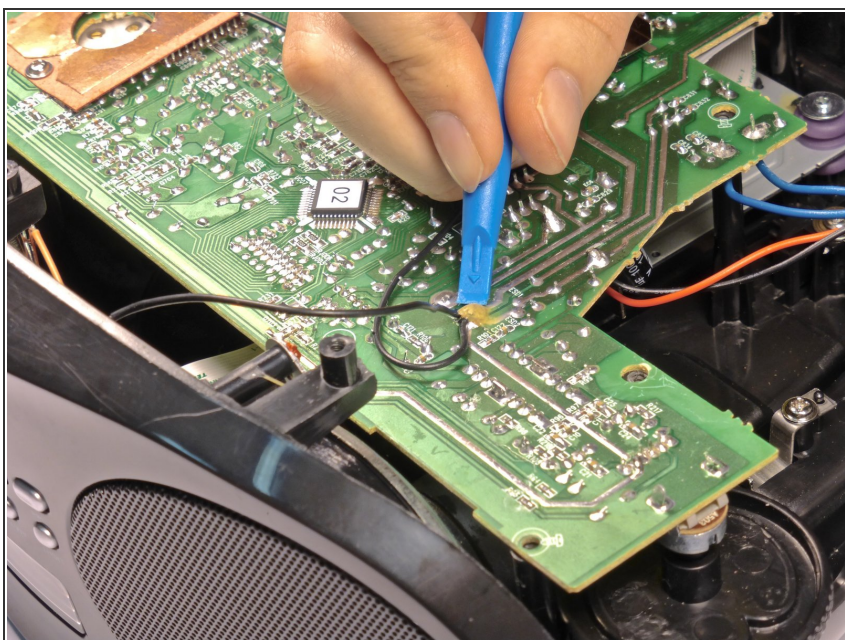
- Rotate the device so that the front is facing you.
- Unplug the four pin header from its socket on the motherboard. The wires on the header are these colors: brown, red, orange, and yellow.
- ⓘ Use a tweezer if you find it hard to pull this header out with your fingers.
- Gently pull out the ribbon cable from its socket.
- ★ Pay attention to the orientation of the header and the ribbon cable. Replacing the base the wrong way may short circuit the board.

Step 9



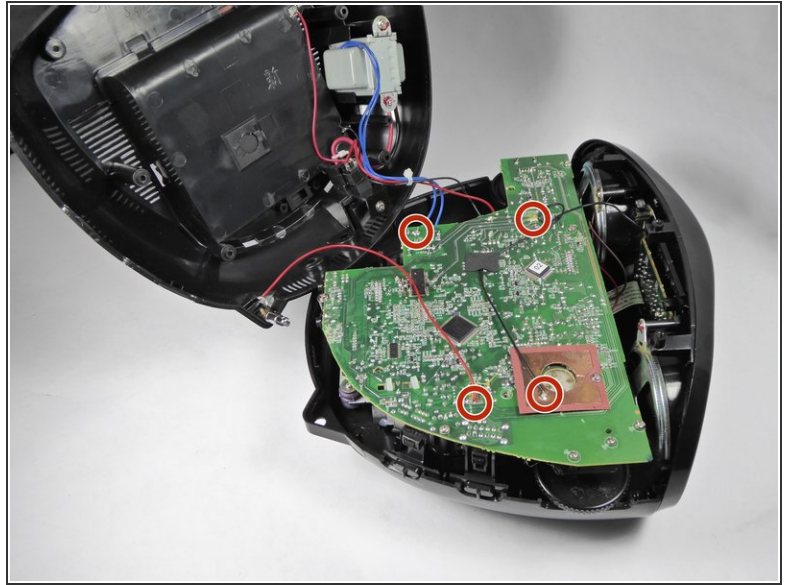
- Pull out the two pin header from its socket on the motherboard. The wires on this header are black and white.
- ⓘ Use a tweezer if you find it hard to pull this cable out with your fingers.

Step 10 — Motherboard



- Scrape off the glue from the black wire with the blue plastic opening tool.

Step 11



- Desolder the one black, one red, and two blue wires. If you need help soldering, see [this guide](#).

To reassemble your device, follow these instructions in reverse order.