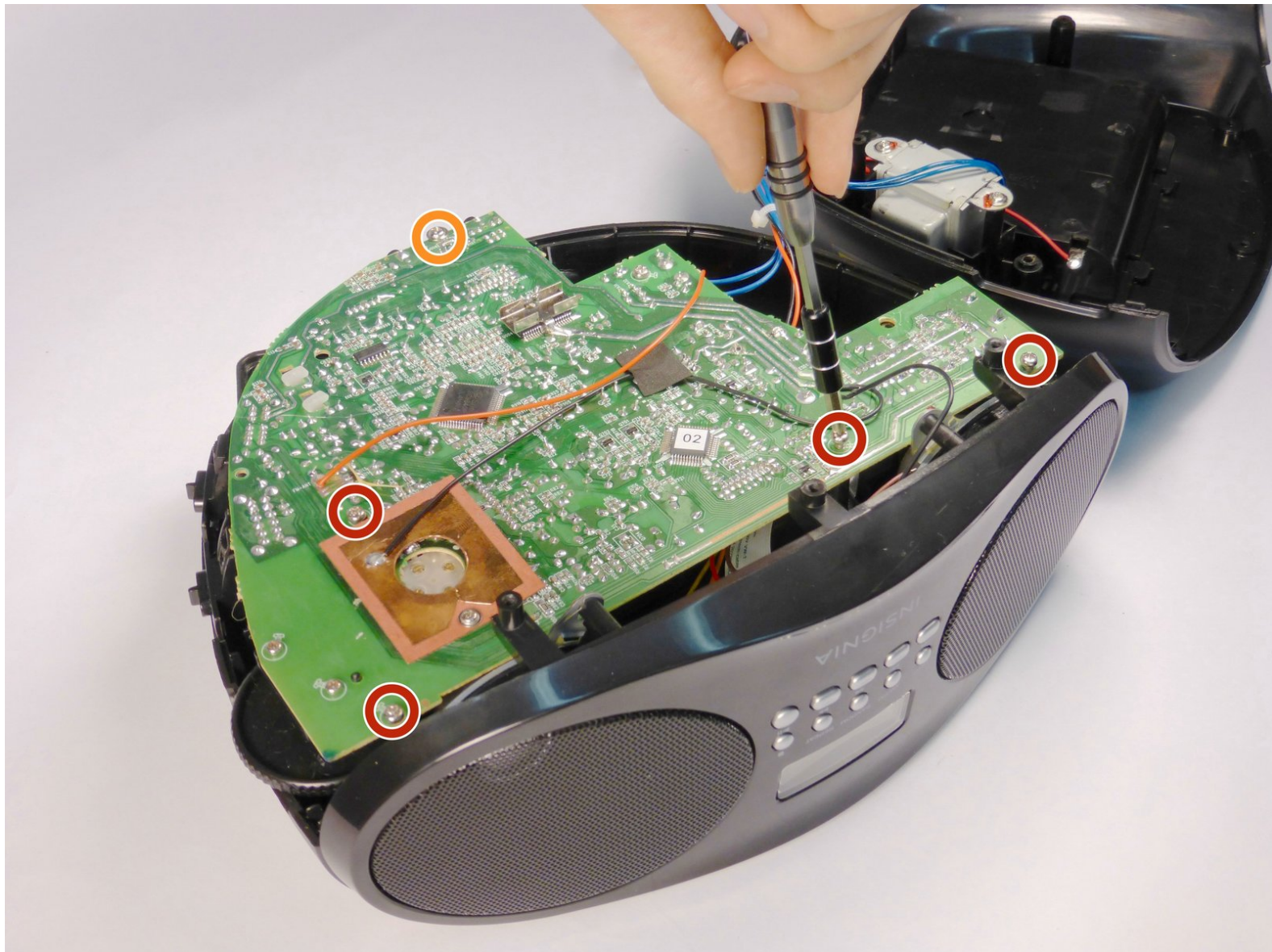




Insignia NS-B4111 Motherboard Replacement

Prerequisite Only.

Written By: Kristin Yoshioka

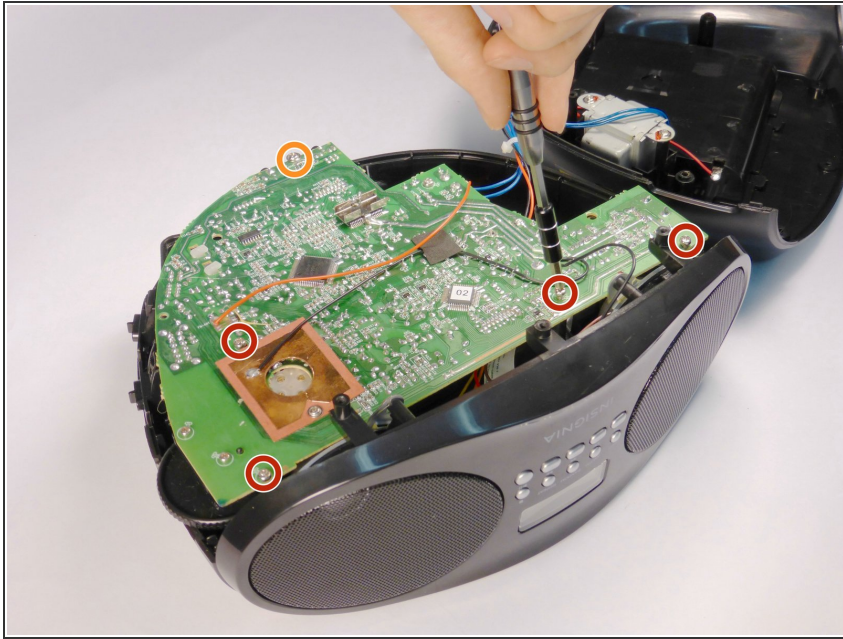




TOOLS:

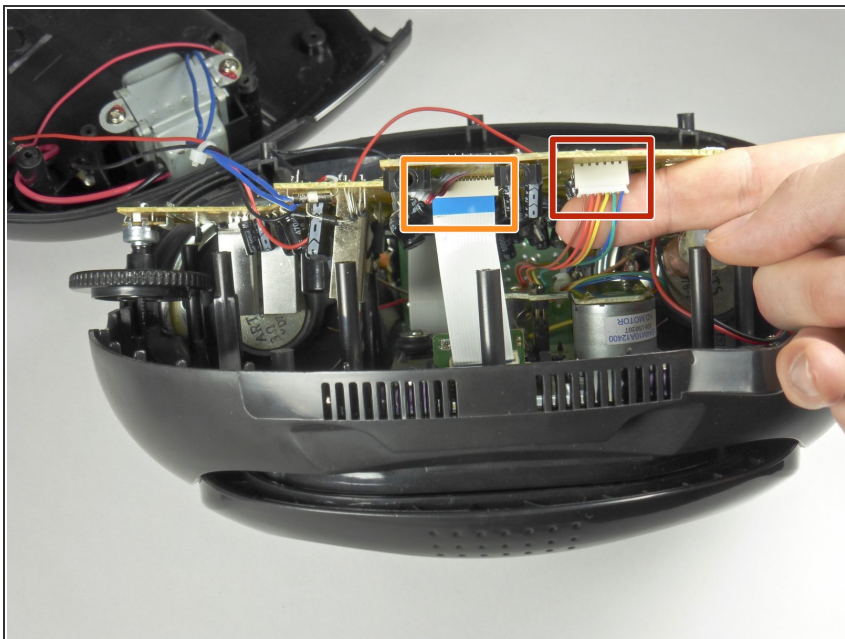
- [Soldering Iron](#) (1)
 - [64 Bit Driver Kit](#) (1)
-

Step 1 — Motherboard



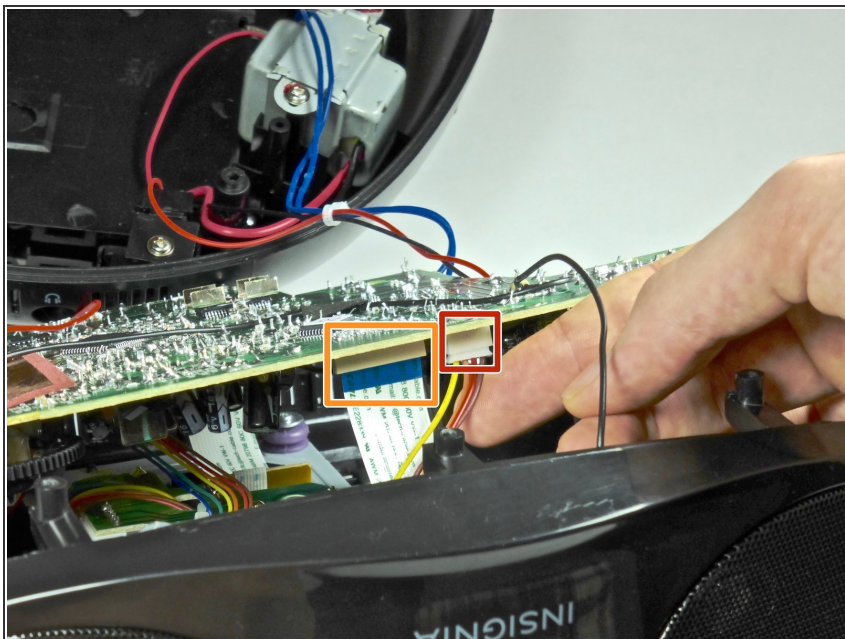
- Unscrew the four 12.5mm screws with the Phillips PH1 Screwdriver.
- Unscrew the one 10mm long screw with the Phillips PH1 Screwdriver.

Step 2



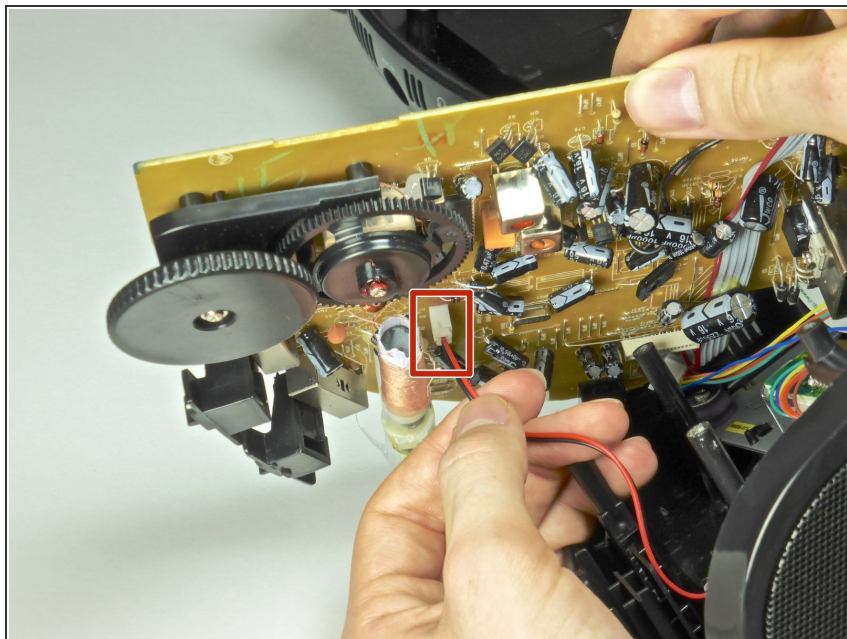
- Orient the device so that the back is facing you.
- Unplug the six pin male/female header from its socket on the motherboard. The wires on the header are these colors: burgundy, red, orange, yellow, green, and blue.
- ⓘ Use a tweezer if you find it hard to pull the header out with your fingers.
- Gently pull out the ribbon cable from its socket on the motherboard.
- ★ Pay attention to the orientation of the header and the ribbon cable. Replacing the wires the wrong way may short circuit the board.

Step 3



- Rotate the device so that the front is facing you.
- Unplug the four pin header from its socket on the motherboard. The wires on the header are these colors: brown, red, orange, and yellow.
- ⓘ Use a tweezer if you find it hard to pull this header out with your fingers.
- Gently pull out the ribbon cable from its socket.
- ★ Pay attention to the orientation of the header and the ribbon cable. Replacing the base the wrong way may short circuit the board.

Step 4



- Pull out the two pin header from its socket on the motherboard. The wires on this header are black and white.
- ⓘ Use a tweezer if you find it hard to pull this cable out with your fingers.

To reassemble your device, follow these instructions in reverse order.