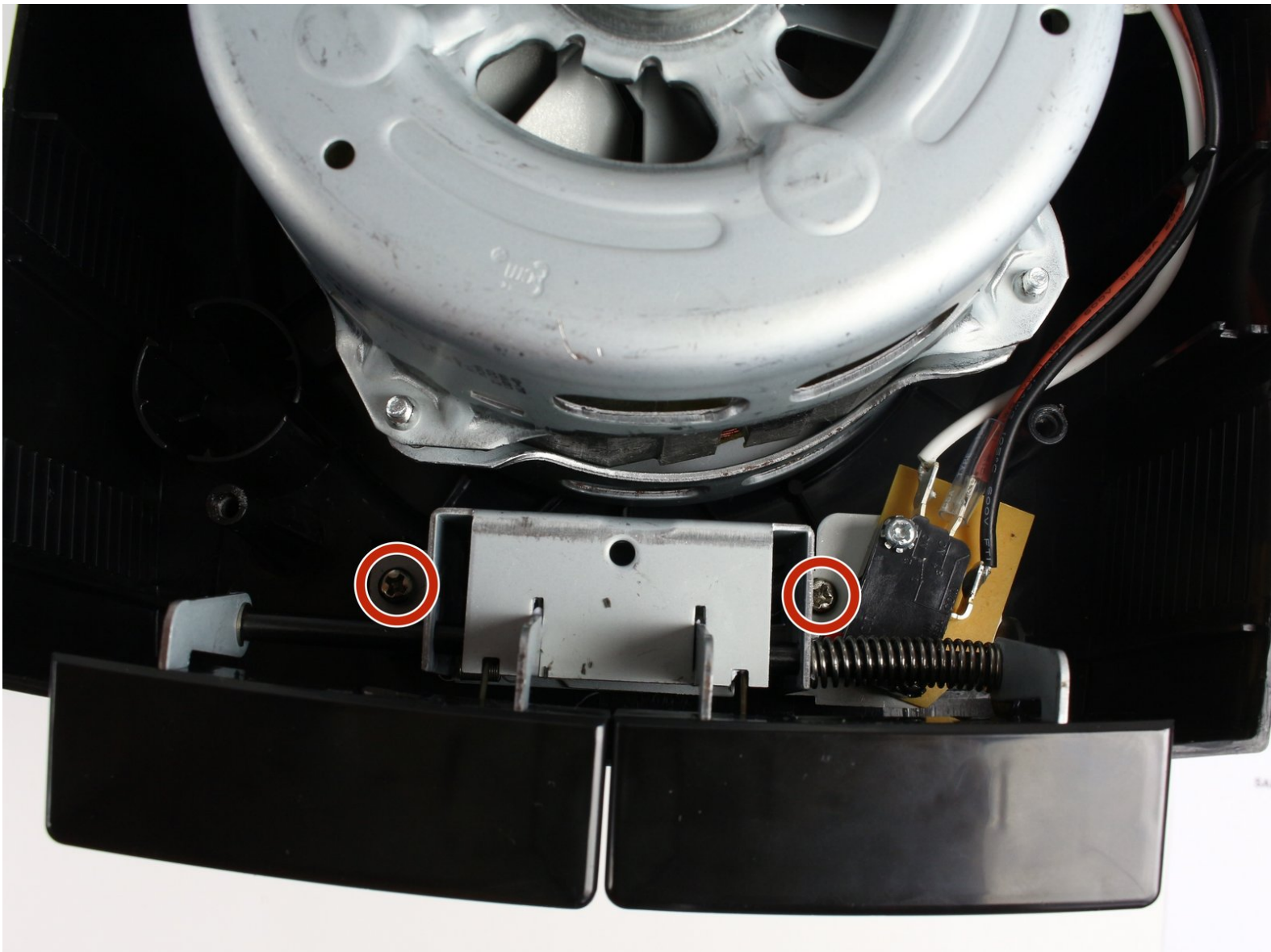




Cuisinart DFP-14BCN Buttons Replacement

Replace the "on" and "off/pulse" buttons of your device to get your blades spinning again.

Written By: Sonya Dick



INTRODUCTION

This guide will show you how to remove the buttons on your food processor and replace them if they are damaged. This guide only requires the use of a screwdriver and nut driver, but gives you a look at the inside of your food processor.



TOOLS:

- [Phillips #2 Screwdriver](#) (1)
 - [64 Bit Driver Kit](#) (1)
-

Step 1 — Bowl



i Unplug your food processor before starting any disassembly.

- Remove the small pusher by rotating it clockwise and lifting up.

Step 2



- Remove the large pusher by grabbing its sides and pulling up.

i There may be a clicking sound from the safety feature being disengaged in this step.

Step 3



- Remove the lid from the bowl by turning it clockwise and lifting.

Step 4



- Take out the blades by grabbing the plastic center piece and lifting up.

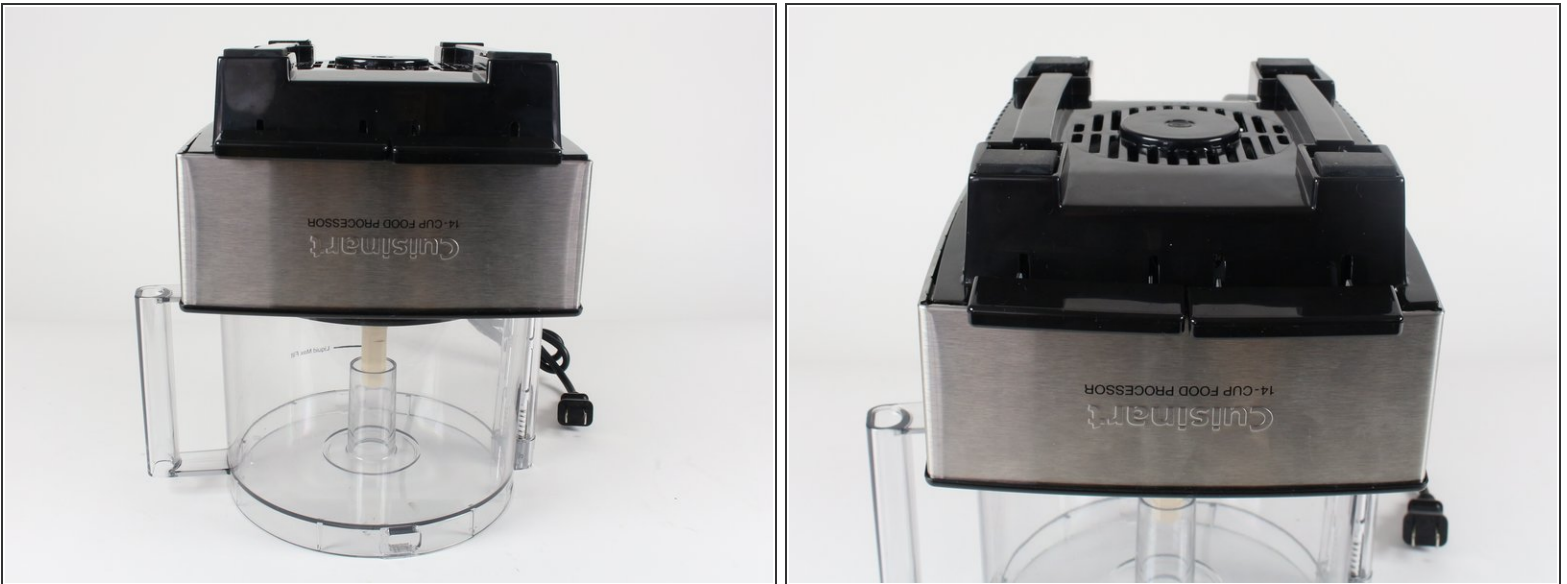
⚠ Avoid contact with blades as they are extremely sharp.

Step 5



- Position the handle of the bowl so that it is on your left.
- Grab the handle and push clockwise. Lift up the bowl to remove it.

Step 6 — Back Casing



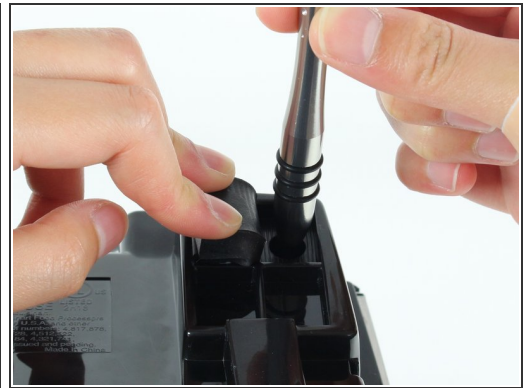
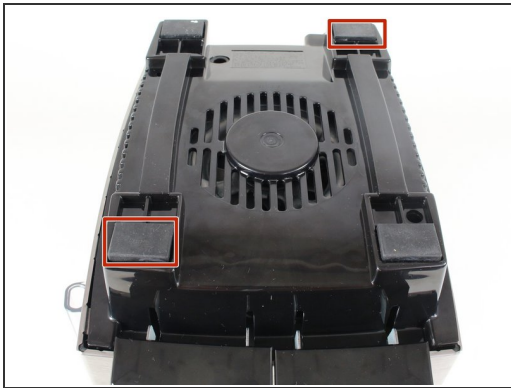
- Turn the food processor's base upside down by lifting it up and turning it over.
- Position the base so that the on and pulse buttons are facing you.
- Place the base on top of the food processor's bowl to keep the base from wobbling while you work on it.

Step 7



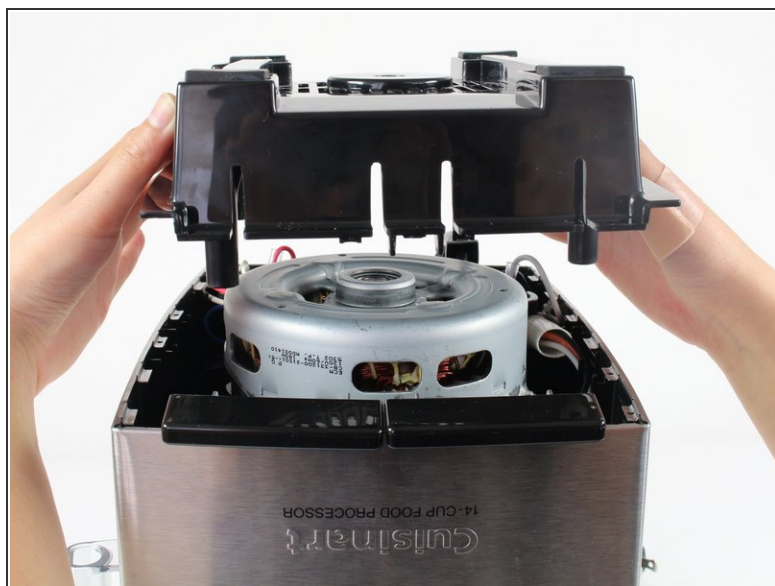
- Remove the two 13.0mm screws that hold down the casing with a Phillips #2 screwdriver.

Step 8



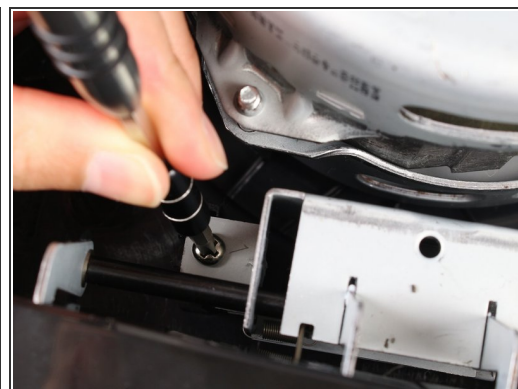
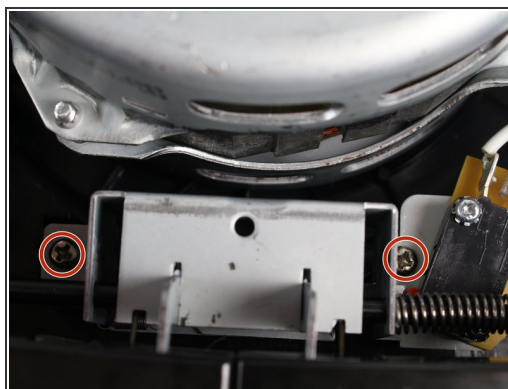
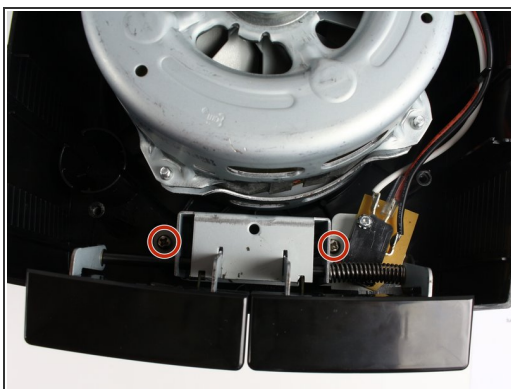
- Lift up the front left and the back right rubber feet by pulling back the rubber with your fingers.
- Remove the 13.0mm screw under each rubber foot with a Phillips #2 screwdriver.

Step 9



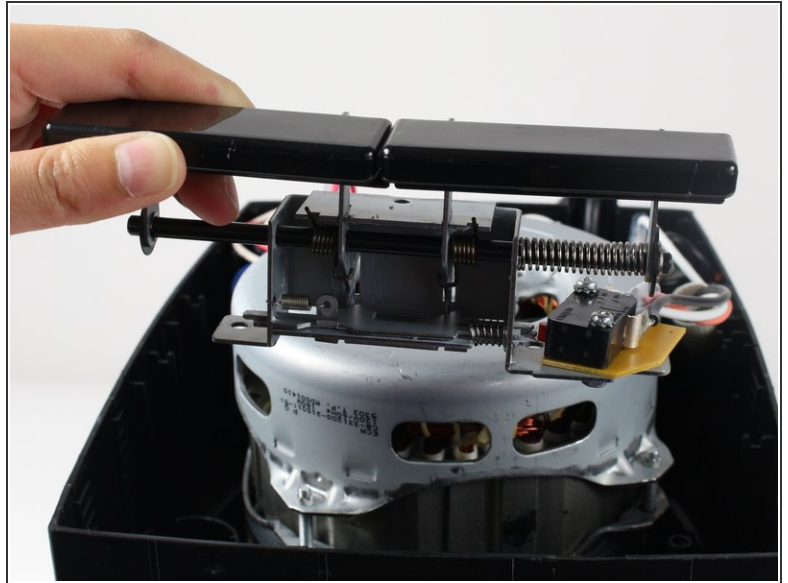
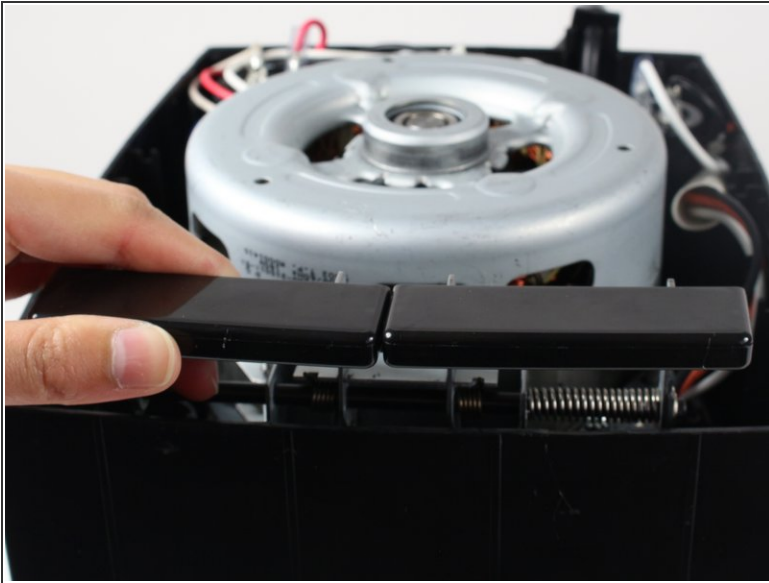
- Lift off the back casing by raising it upward.

Step 10 — Buttons



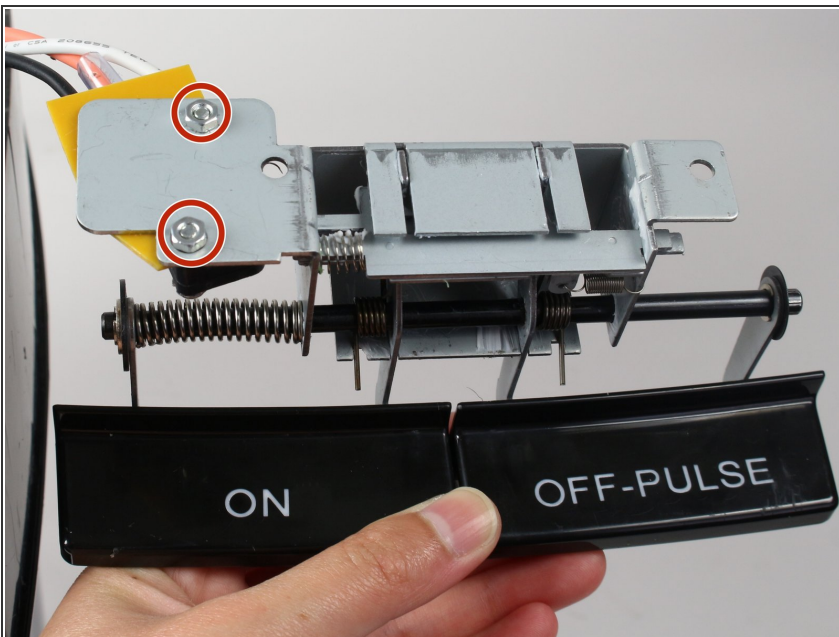
- Remove the two 13.0mm screws that are holding down the button assembly using the Phillips #2 screwdriver.

Step 11



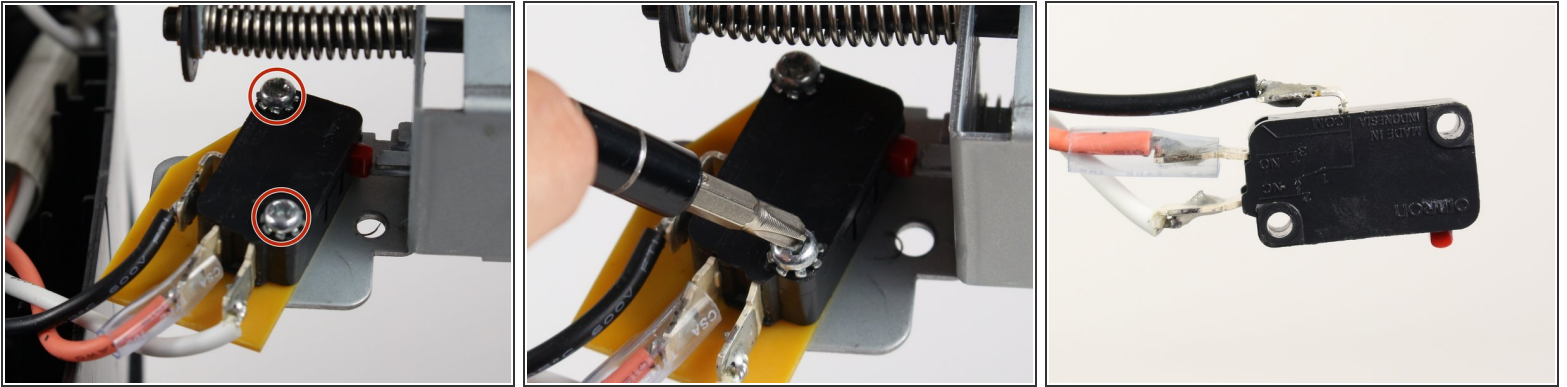
- Lift out the button assembly by pulling up.

Step 12



- Remove the two 5.5mm nuts with a 5.5mm nut driver.

Step 13



- Remove the two 13.0mm screws that hold the switch to the button assembly with a Phillips #2 screwdriver.
- ⓘ The screws have glue in their threads, so this step might require a little extra force.
- Slide off the switch and yellow plastic to remove the button assembly.

To reassemble your device, follow these instructions in reverse order.