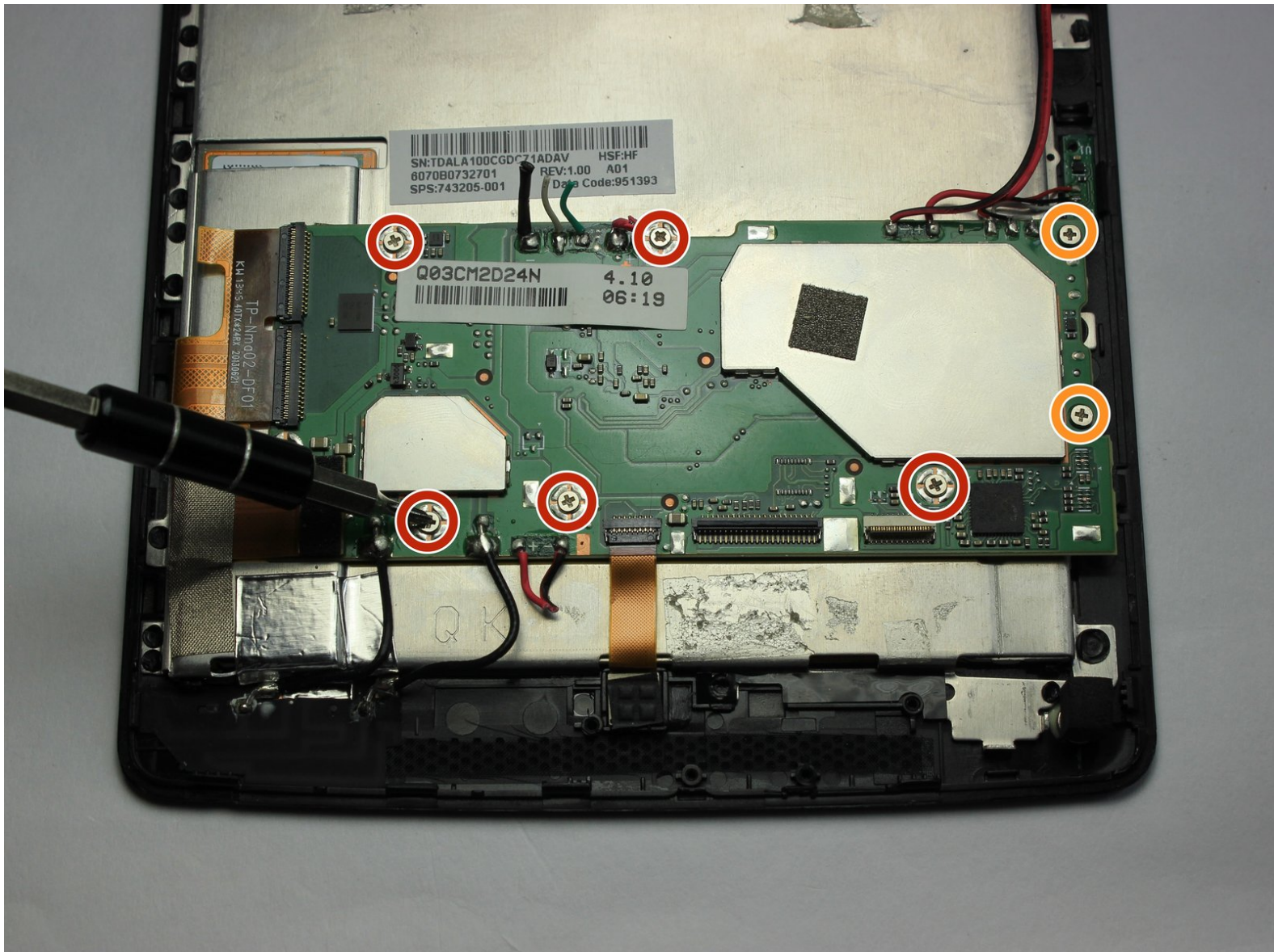




HP Slate 7 Extreme 4400US Motherboard Replacement

This guide will present the steps needed to replace the motherboard on the HP Slate 7 Extreme 4400 US tablet.

Written By: Brandon Ko



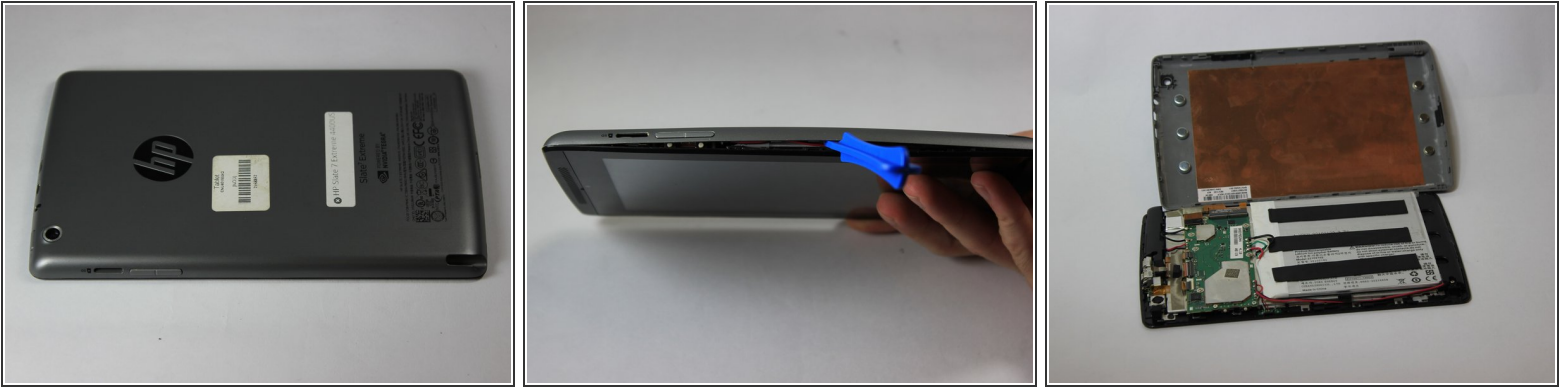
INTRODUCTION

This is a difficult process, and you will need precision and caution in order to carefully remove the parts and motherboard.

TOOLS:

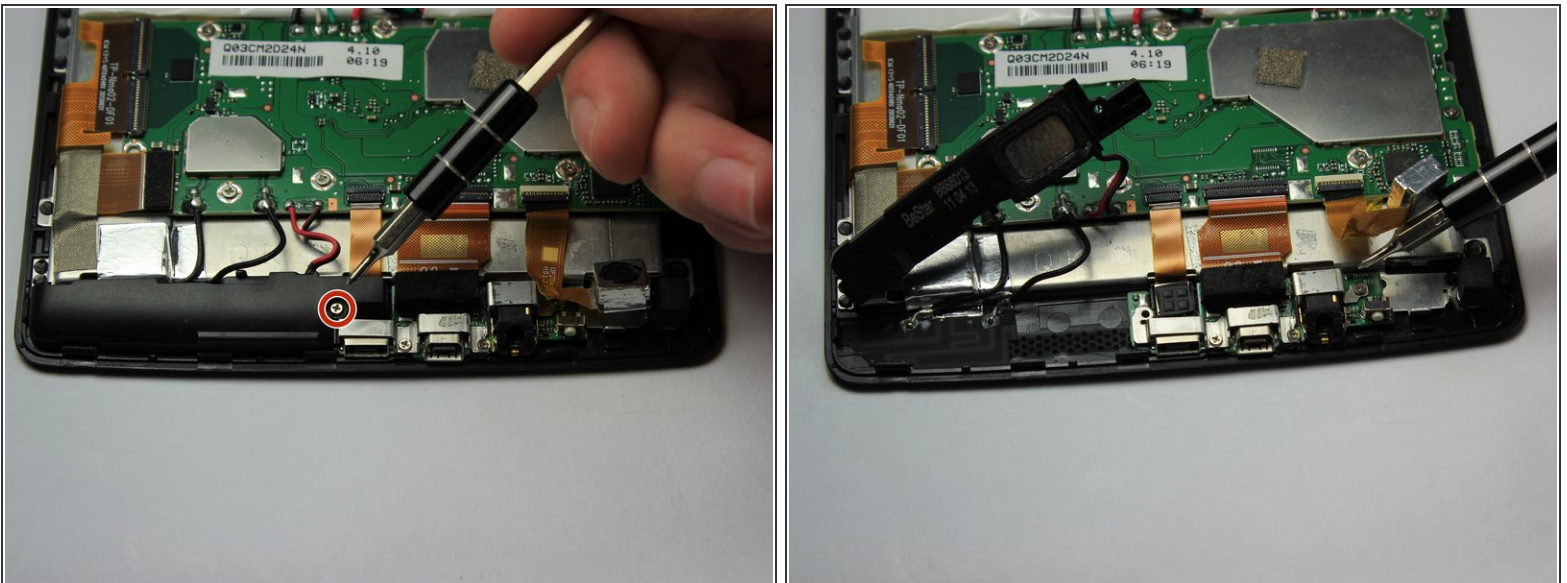
- [Spudger](#) (1)
 - [Phillips #000 Screwdriver](#) (1)
 - [Soldering Iron](#) (1)
 - [Flush Wire Cutters](#) (1)
 - [Phillips #00 Screwdriver](#) (1)
 - [iFixit Opening Tools](#) (1)
-

Step 1 — Back Cover



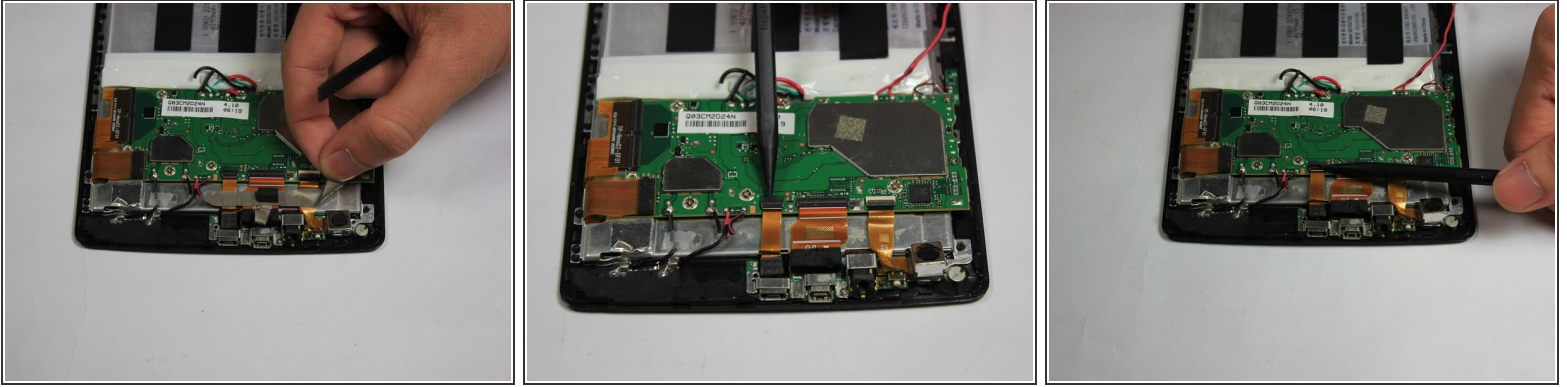
- Use the plastic opening tool to separate the back cover from the tablet. Carefully use the tool to pry open the sides, going around the entire tablet to lift the sides up.
- Once all sides have been pried up, pull the cover off and place it to the side.

Step 2 — Front-facing Camera



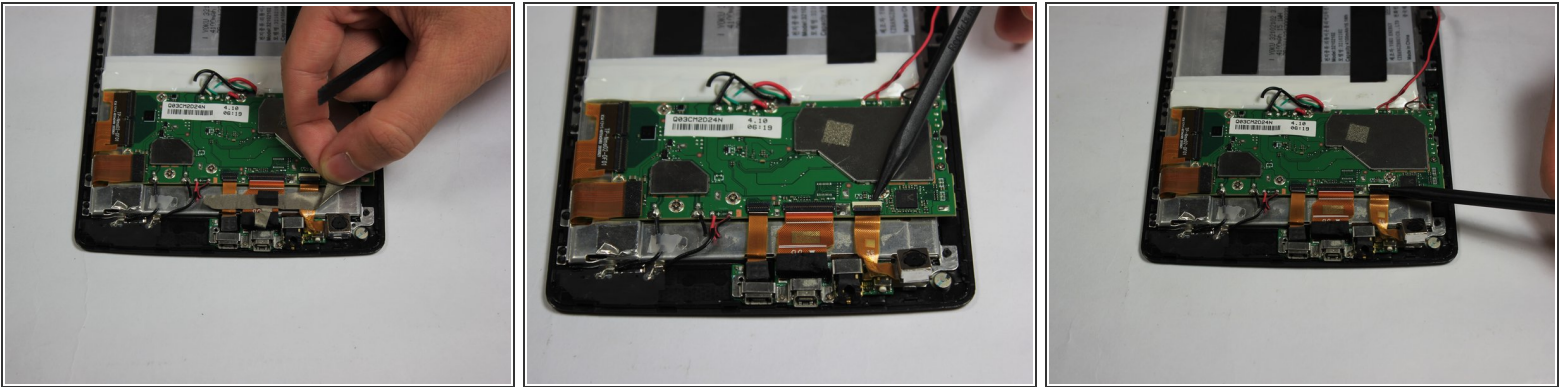
- Use the PH #000 screw bit to remove the 5.0 mm screw holding down the top speaker to expose the front-facing camera.

Step 3



- Pull back the tape holding the the front facing camera's connector strip to the device.
- Use the nylon spudger to flip up the black retaining flap of the zero insertion force (ZIF) connector holding the strip in place.
- Gently pull the camera's connecting strip out from the port.

Step 4 — Rear-Facing Camera



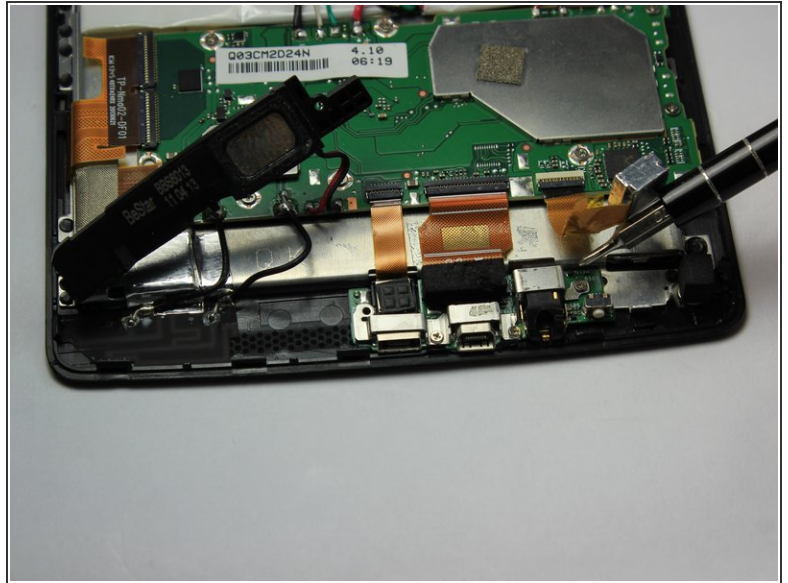
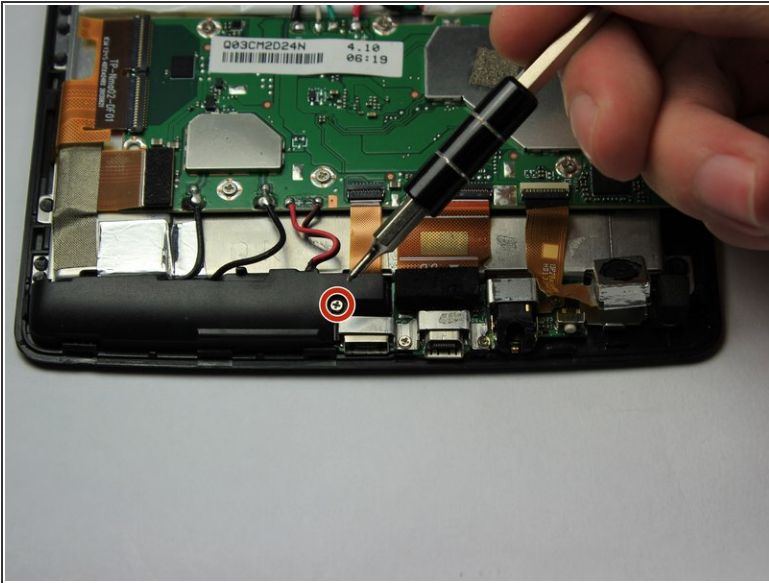
- Pull back the tape holding the the camera's connector strip to the device.
- Use the nylon spudger to flip up the black retaining flap of the zero insertion force (ZIF) connector holding the strip in place.
- Gently pull the camera's connecting strip out from the port.

Step 5 — Battery



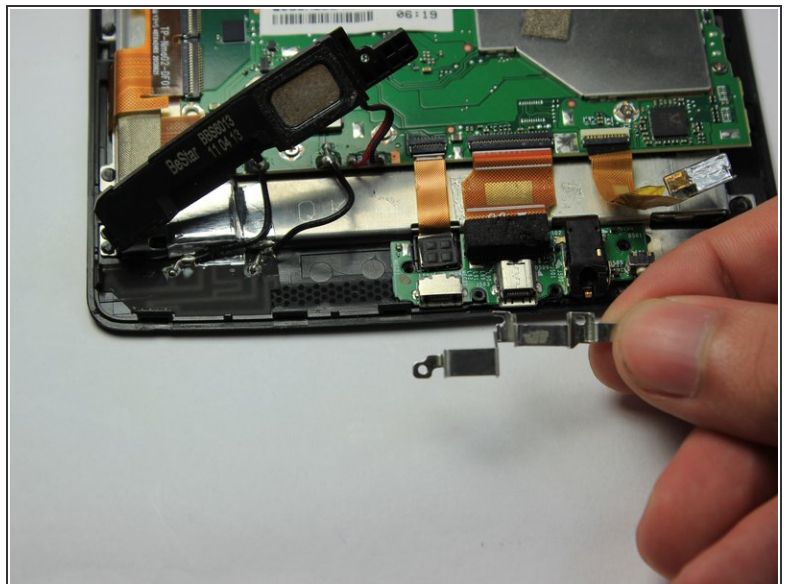
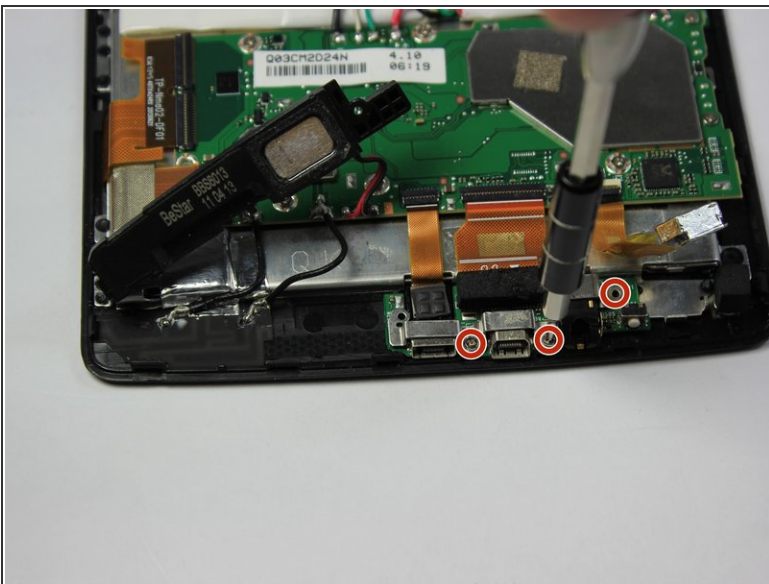
- Cut the battery connectors one by one using wire cutters.
 - ⚠ Do not cut all the wires at the same time; you risk blowing up the battery or destroying the motherboard!
- After disconnecting the battery, take the new battery and use wire connectors to connect to the motherboard.
- ⓘ You may use a soldering tool to disconnect the wires from the motherboard, and to also soldering the wires for the replacement battery onto the motherboard.

Step 6 — Charging port and Audio Jack Circuit Board



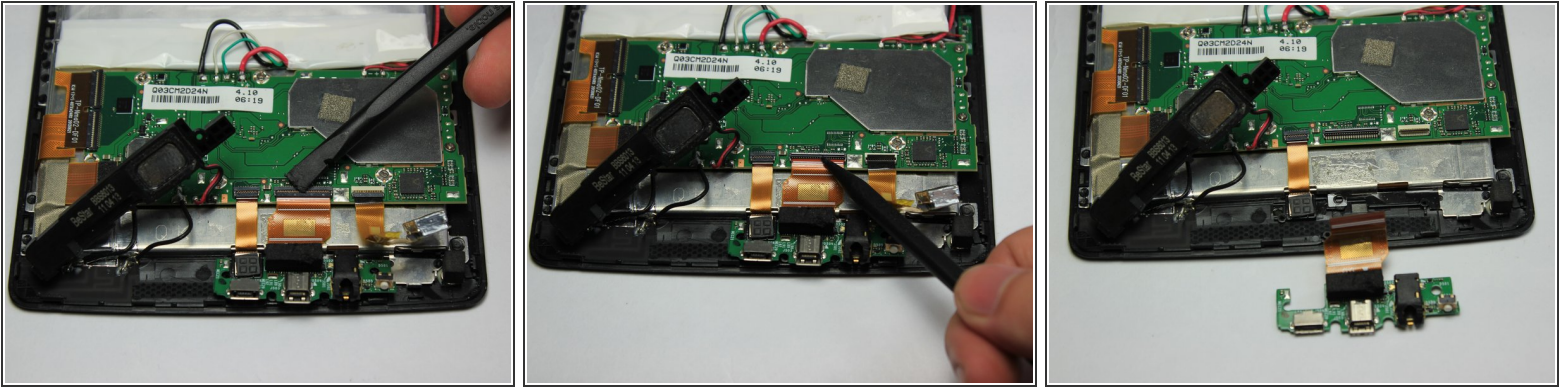
- Use the PH #000 phillips head screw driver to remove one 5.0 mm screw.
- Move plastic housing and rear facing camera to expose silver bracket.

Step 7



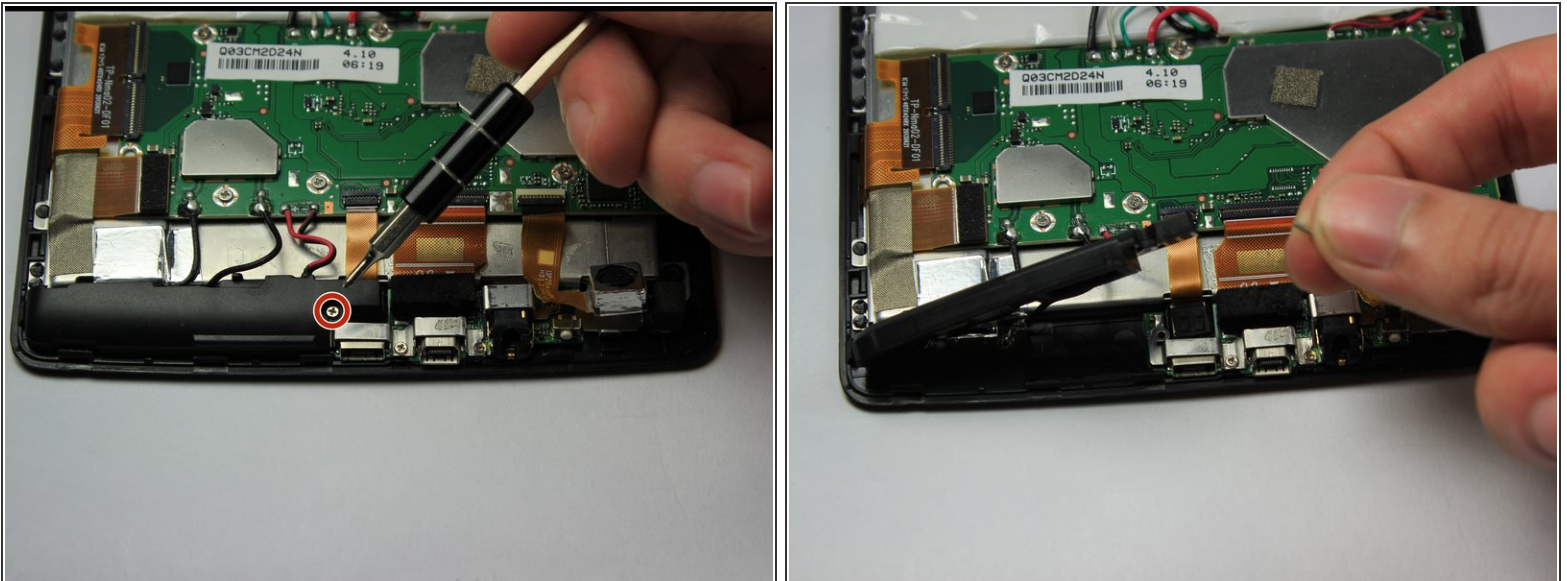
- Use the PH #000 phillips head screw driver to remove three 3.0mm screws. Remove the silver bracket.

Step 8



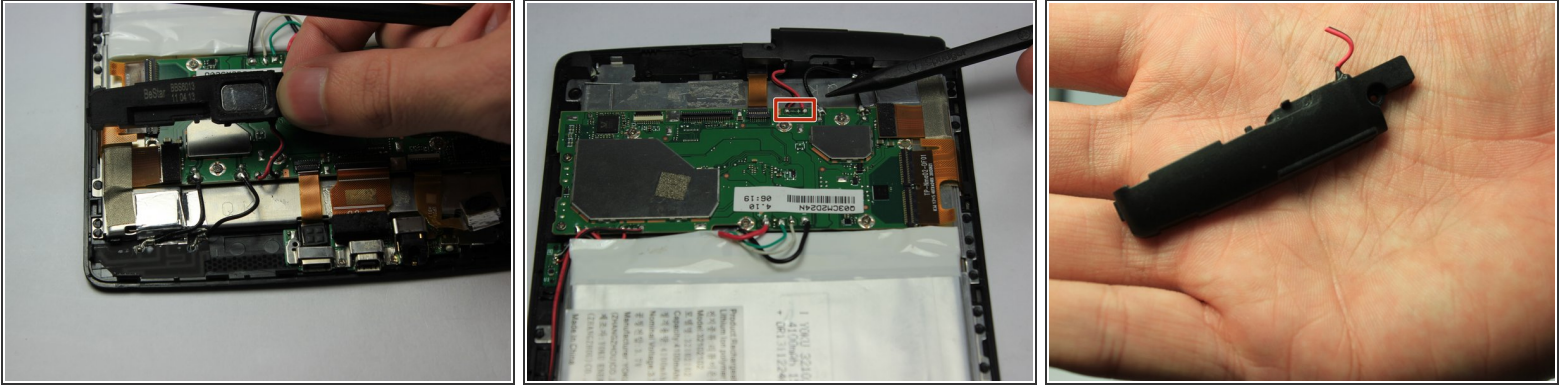
- Use the nylon spudger to flip up the black retaining flap of the zero insertion force (ZIF) connector holding the strip in place.
- Grab the green circuit board and pull directly up to separate the glued down power strip.
- Gently pull the circuit board out of its connector.

Step 9 — Top Speaker



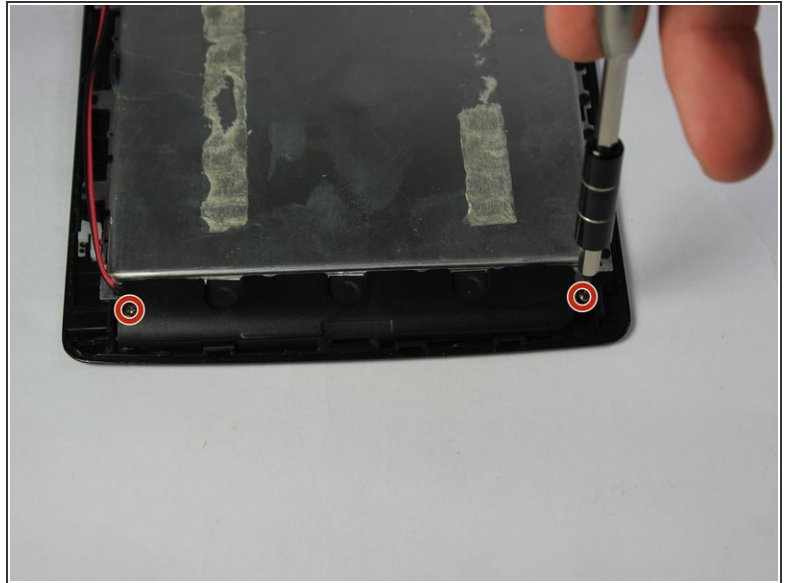
- Use the PH #000 phillips screw bit to remove one 5.0 mm screw.

Step 10



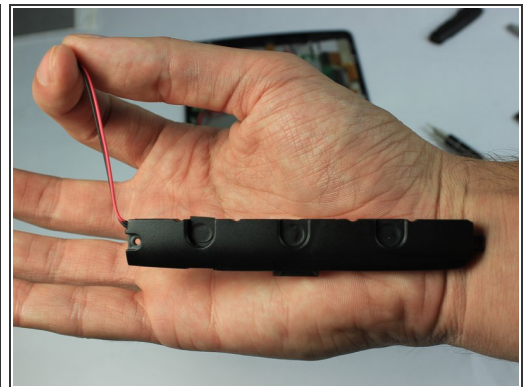
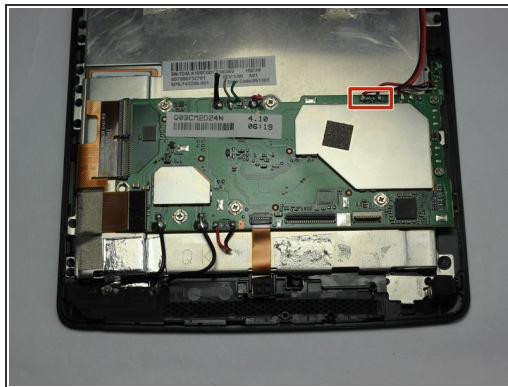
- Gently pull the entire black housing away from device.
 - Locate where the speakers' wires are connected to the motherboard.
 - Using wire cutters, sever the wires connecting the speaker to the motherboard. Strip the wires with a wire stripper and fashion the new wires to the old ones connected to the motherboard to reconnect.
- i** You may use a soldering tool to disconnect the wires from the motherboard and to reconnect the new wires back to the motherboard.

Step 11 — Bottom Speaker



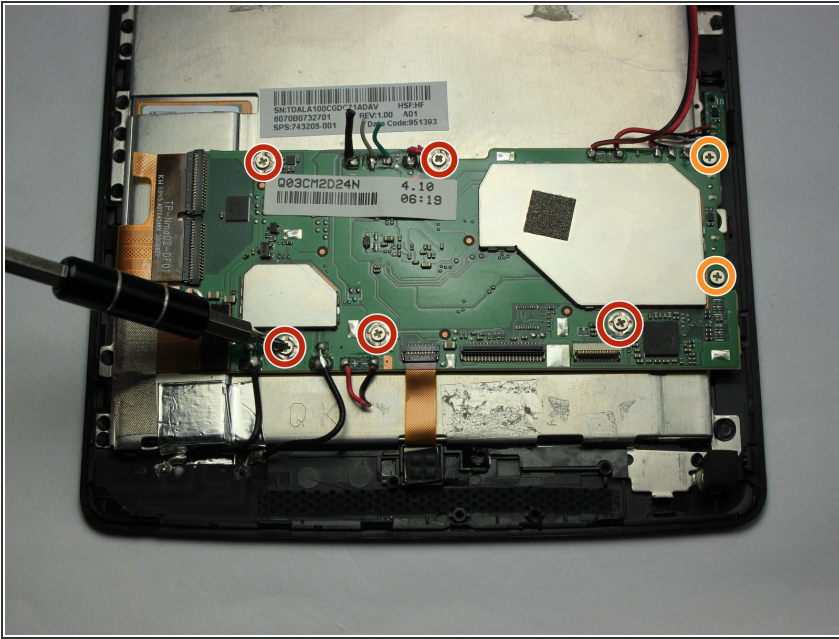
- Locate the wires connecting the bottom speaker to the motherboard. The wires will be running alongside the battery
- Using the PH #000 screw bit, unscrew the two 5.0 mm screws holding the bottom speaker in place

Step 12



- Locate where the speakers' wires are connected to the motherboard.
 - Using a pair of wire cutters, cut the wires connecting the speaker to the motherboard. Use a wire stripper to expose the wire to connect it with the wires of the new speaker.
- i** You can also use a soldering tool to disconnect the wires from the motherboard and then connect the wires of the new speaker using the soldering tool.

Step 13 — Motherboard



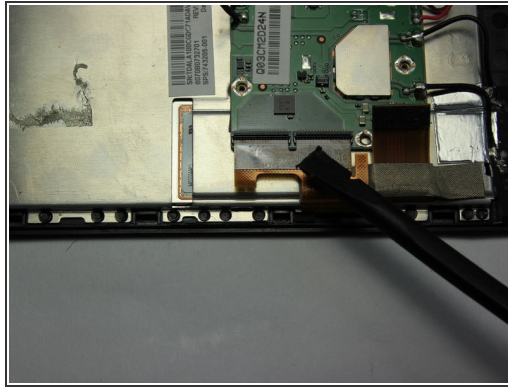
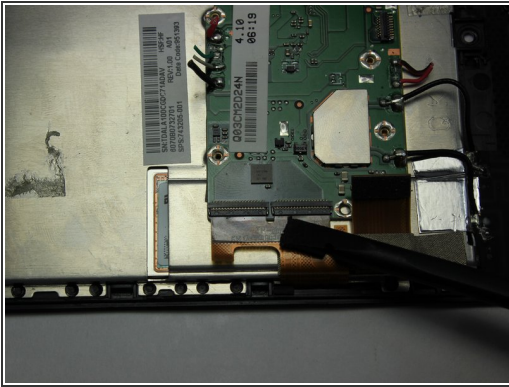
- Using the PH #000 philips head screw bit, unscrew the seven screws holding the motherboard in place. Those in red are 3.0mm in length
- Those in orange are 5.0 mm in length

Step 14



- Disconnect the press-fit connector from the mother board using the nylon spudger. Gently pry the connector up; it will pop out of place easily, so if its not coming out don't force it.

Step 15



- Use the nylon spudger to flip up the black retaining flap of the zero insertion force (ZIF) connector holding the strip in place.
- Gently pull the connector strips out of the motherboard. The motherboard is now disconnected.

To reassemble your device, follow these instructions in reverse order.